

ROUTE NO.	SECTION	COUNTY	TOTAL SHEETS	SHEET NO.
FAU 1260	12-00097-00-PV	COOK	56	1
ILLINOIS PROJECT				
SECTION				
CONTRACT NO. 63771				



LOCATION OF SECTION INDICATED THUS:

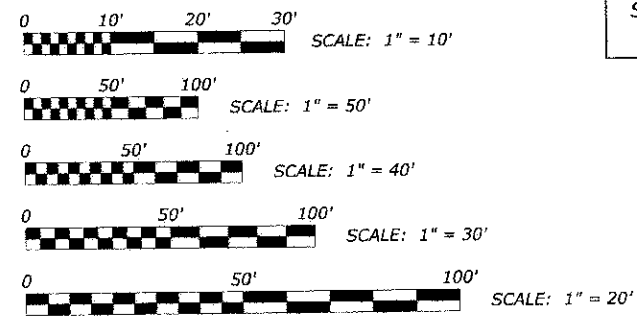
STATE OF ILLINOIS
DEPARTMENT OF TRANSPORTATION
DIVISION OF HIGHWAYS
PLANS FOR PROPOSED
FEDERAL AID HIGHWAY
FAU 1260 (ELM STREET)
GRAND AVENUE TO BELMONT AVENUE
ROADWAY WIDENING AND RECONSTRUCTION
PROJECT M-4003(030)
SECTION 12-00097-00-PV
VILLAGE OF RIVER GROVE
COOK COUNTY
C-91-443-12

FOR INDEX OF SHEETS SEE SHEET NO. 2

TRAFFIC DATA

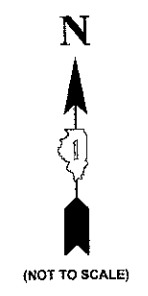
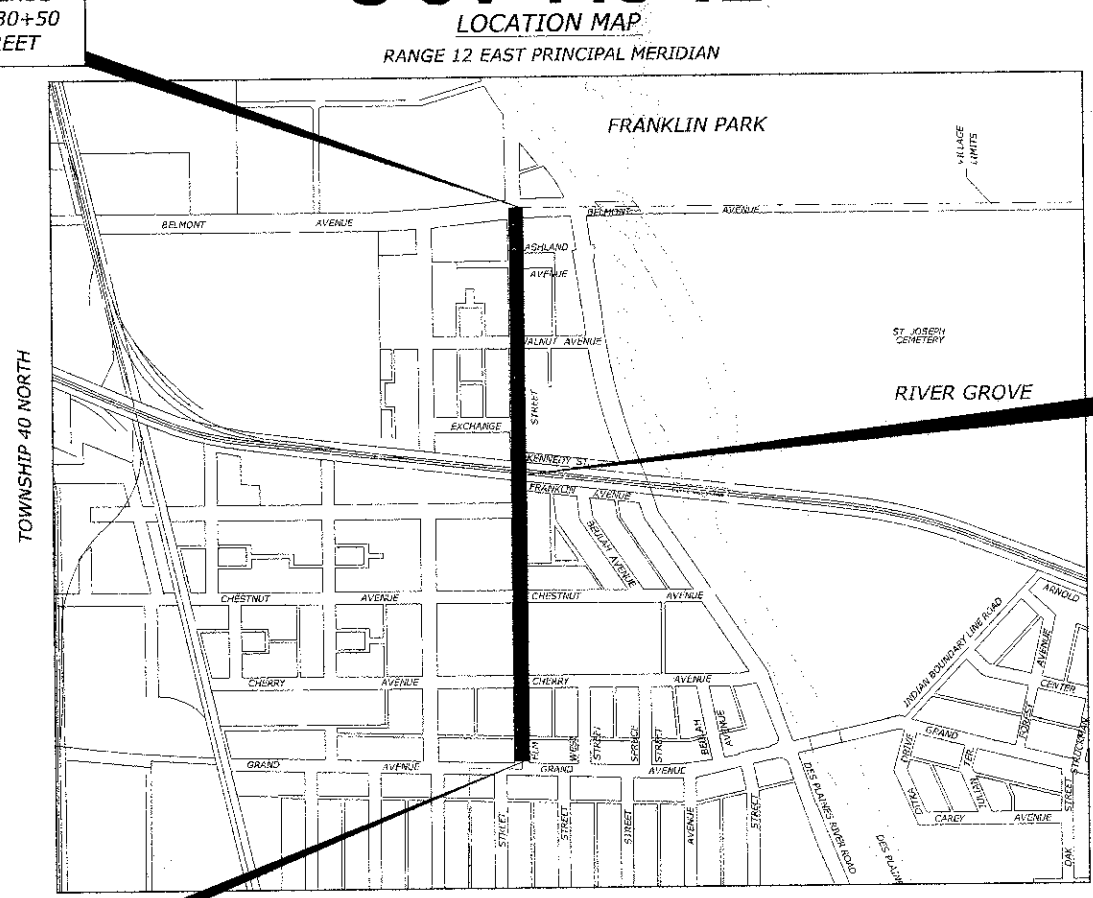
2048 ADT = 3,000
 POSTED SPEED LIMIT: 20 MPH
 DESIGN SPEED LIMIT: 30 MPH
 MINOR ARTERIAL

PROJECT LOCATED IN THE VILLAGE OF RIVER GROVE



FULL SIZE PLANS HAVE BEEN PREPARED USING STANDARD ENGINEERING SCALES. REDUCED SIZED PLANS WILL NOT CONFORM TO STANDARD SCALES. IN MAKING MEASUREMENTS ON REDUCED PLANS, THE ABOVE SCALES MAY BE USED.

PROJECT ENDS STATION 30+50 ELM STREET



ELM ST. OMISSION
 ELM STREET
 STA. 16+98 TO STA. 17+41

PROJECT BEGINS STATION 1+88 ELM STREET

MAP SCALE : NONE
LEYDEN TOWNSHIP
 - AREA OF IMPROVEMENT
 GROSS LENGTH OF PROJECT = 2862 FT. = 0.542 MI.
 NET LENGTH OF PROJECT = 2819 FT. = 0.534 MI.

STATE OF ILLINOIS
 ILLINOIS DEPARTMENT OF TRANSPORTATION
 DIVISION OF HIGHWAYS

APPROVED 12-12 20 12

 VILLAGE OF RIVER GROVE, PRESIDENT

PASSED December 31 20 12

 DISTRICT 1 ENGINEER OF LOCAL ROADS & STREETS

RELEASING FOR BID BASED ON LIMITED REVIEW JANUARY 2 20 13

 DEPUTY DIRECTOR OF HIGHWAYS,
 REGION 1 ENGINEER

PRINTED BY THE AUTHORITY OF THE STATE OF ILLINOIS



DATE SIGNED: 12-12-12
 LICENSE EXPIRES: 11-30-13

EDWIN HANCOCK ENGINEERING COMPANY
 9933 ROOSEVELT ROAD PHONE: (708)865-0300
 WESTCHESTER, ILLINOIS 60154



CONTRACT NO. 63771

PROGRAM AND OFFICE ENGINEER: CHARLES F. RIDDLE, P.E.
 SCHAUMBURG, ILLINOIS
 PHONE: (847)705-4406
 CONSULTANT:
 EDWIN HANCOCK ENGINEERING COMPANY
 9933 ROOSEVELT ROAD PHONE: (708)865-0300
 WESTCHESTER, ILLINOIS 60154
 Dec. 07, 2012 - 2:17pm
 Drawing file: W:\Projects\76012012 - ELM STREET RECONSTRUCTION PHASE IV\01_COVER.dwg

E.H.E. NO. 760-12-05201