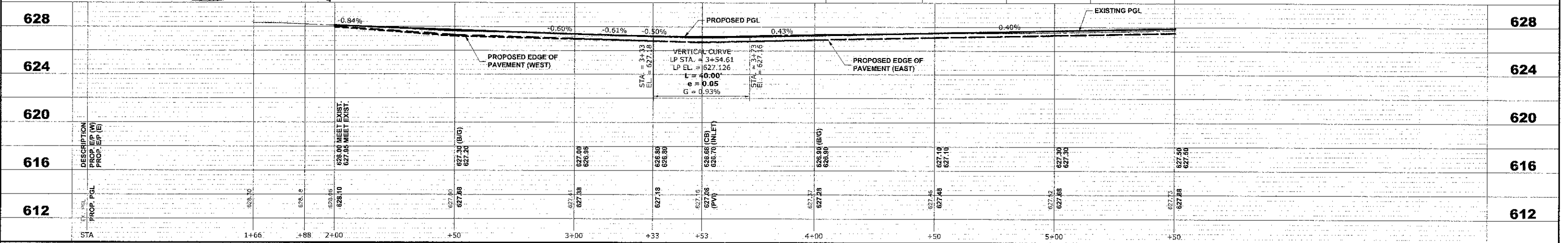
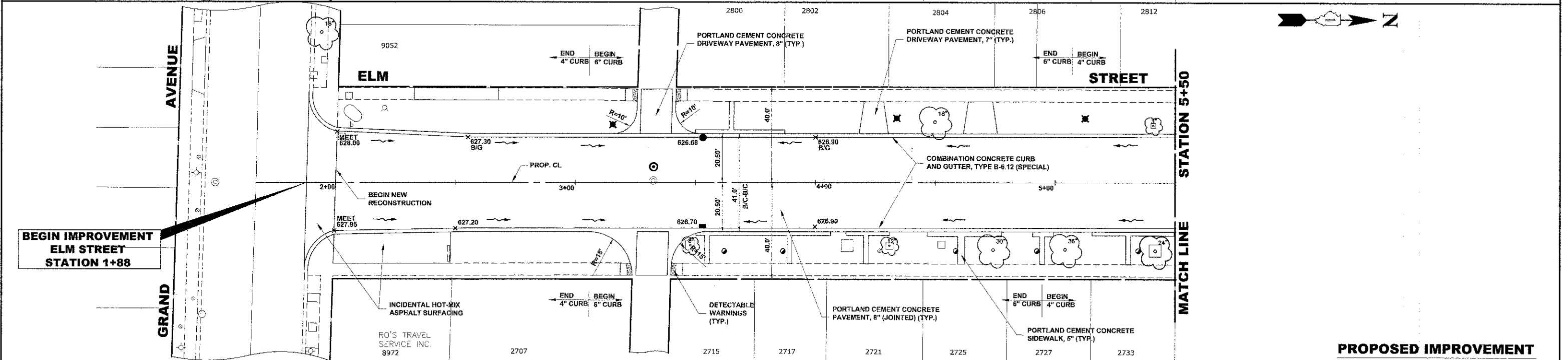
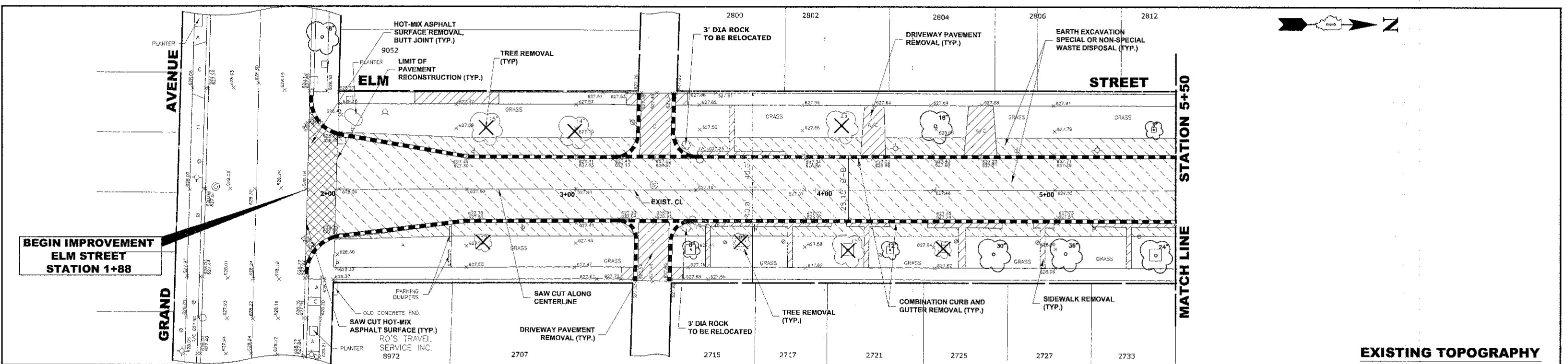


Drawing File: W:\Projects\76012002 - ELM STREET RECONSTRUCTION PHASE II\TOP\CLM STREET -000.dwg Dec 07, 2012 2:30pm



HANCOCK ENGINEERING

- Civil Engineers
- Municipal Consultants
- Established 1911

3933 Roosevelt Road
Waukegan, Illinois 60084-3780
Phone: 708/845-2500
Fax: 708/845-1213

DESIGNED -	CB/SBC	REVISED -	
DRAWN -	ECW, MK, DMM	REVISED -	
CHECKED -	MDL	REVISED -	
DATE -	12-7-12	REVISED -	

**STATE OF ILLINOIS
DEPARTMENT OF TRANSPORTATION**

**ELM STREET
PAVING PLAN AND PROFILE**

SCALE: 1"=20' H, 4"V SHEET NO. 1 OF 7 SHEETS STA. 1+88 TO STA. 5+50

F.A.U. RTE.	SECTION	COUNTY	TOTAL SHEETS	SHEET NO.
1260	12-00097-00-PV	COOK	56	9
FIELD BOOK NO. : X		CONTRACT NO. 63771		
FED. ROAD DIST. NO. 1		ILLINOIS	FED. AID PROJECT	