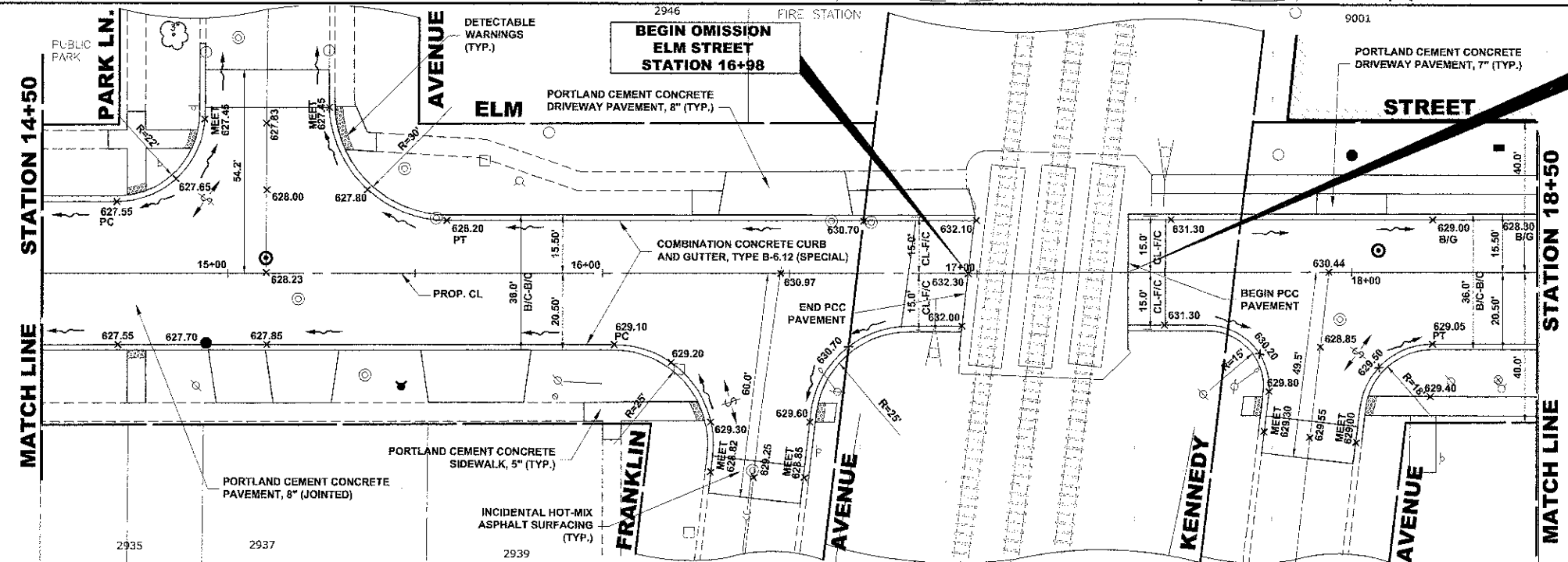
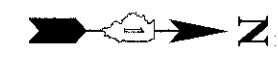
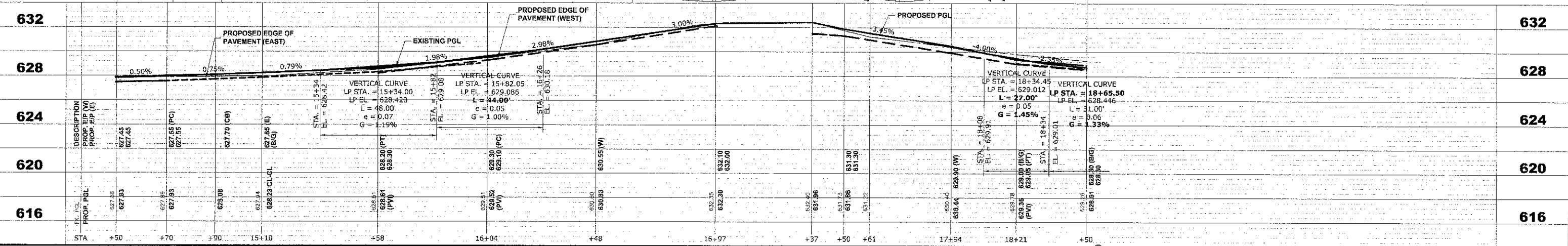


**EXISTING TOPOGRAPHY**



**PROPOSED IMPROVEMENT**



**HANCOCK ENGINEERING**  
 Civil Engineers  
 Municipal Consultants  
 Established 1911  
 9933 Roosevelt Road  
 Waukegan, Illinois 60087-3786  
 Phone: 708/865-8300  
 Fax: 708/865-1312

|            |              |           |
|------------|--------------|-----------|
| DESIGNED - | CB/SBC       | REVISED - |
| DRAWN -    | ECW, MK, DMM | REVISED - |
| CHECKED -  | MDL          | REVISED - |
| DATE -     | 12-7-12      | REVISED - |

**STATE OF ILLINOIS  
 DEPARTMENT OF TRANSPORTATION**

**ELM STREET  
 PAVING PLAN AND PROFILE**  
 SCALE: 1"=20' H./4'V  
 SHEET NO. 4 OF 7 SHEETS  
 STA. - TO STA. -

|                       |                |                           |              |           |
|-----------------------|----------------|---------------------------|--------------|-----------|
| F.A.U. RTE.           | SECTION        | COUNTY                    | TOTAL SHEETS | SHEET NO. |
| 1260                  | 12-00097-00-PV | COOK                      | 56           | 12        |
| FIELD BOOK NO. : X    |                | CONTRACT NO. 63771        |              |           |
| FED. ROAD DIST. NO. 1 |                | ILLINOIS FED. AID PROJECT |              |           |

Drawings file: W:\Projects\76012053 - ELM STREET RECONSTRUCTION PHASE (AVENUE) (ELM STREET) (0909.dwg) Dec 07, 2012 2:30pm