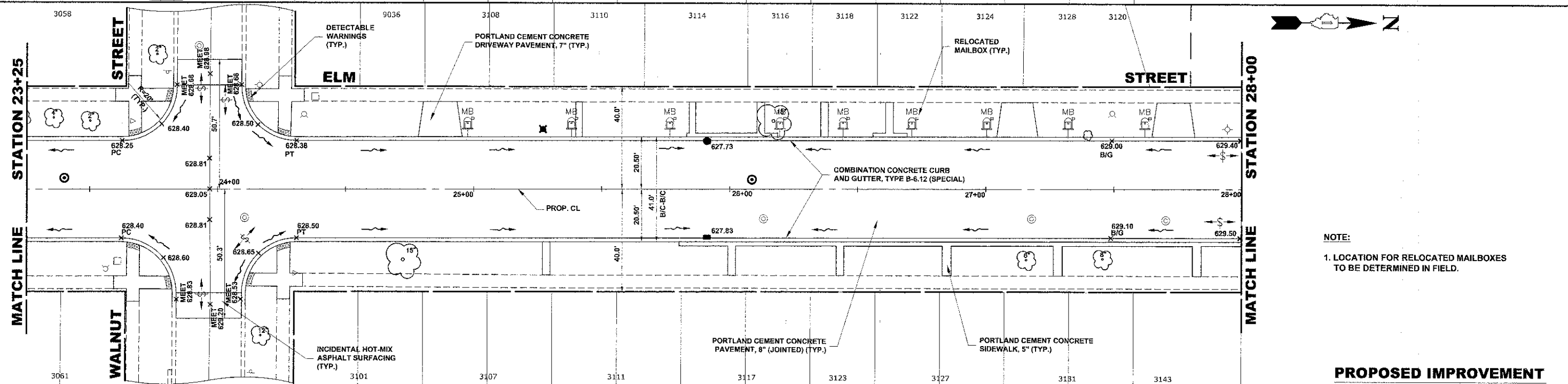
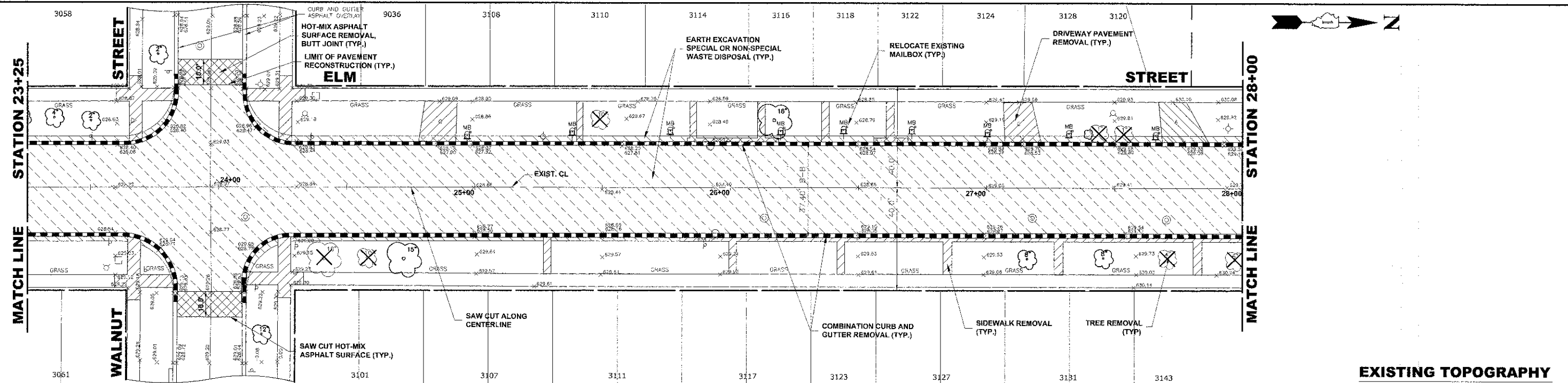


Drawing file: \\Projects\17012022 - ELM STREET RECONSTRUCTION PHASE 1\TOP\ELM STREET TOP.dwg Date: 01/20/2022 - 2:30pm



**NOTE:**  
1. LOCATION FOR RELOCATED MAILBOXES TO BE DETERMINED IN FIELD.

| STATION | PROPOSED PGL  | EXISTING PGL                       | PROPOSED EDGE OF PAVEMENT (WEST)  | PROPOSED EDGE OF PAVEMENT (EAST) |
|---------|---|------------------------------------|---|----------------------------------|
| 628     | 0.55%   | 1.00%                              | -0.71%  | 0.37%                            |
| 624     | VERTICAL CURVE<br>HP STA. = 24+02.85<br>HP EL. = 628.91<br>L = 68.00'<br>e = 0.14<br>G = -1.71% |                                    | VERTICAL CURVE<br>LP STA. = 25+79.50<br>LP EL. = 628.270<br>L = 75.00'<br>e = 0.11<br>G = 2.20% |                                  |
| 620     | 628.11<br>628.12  | 628.23 (PC)<br>628.41 (PC)         | 628.33 (PT)<br>628.50 (PT)  | 628.30<br>628.40                 |
| 616     | 628.12<br>628.17  | 628.17<br>628.71                   | 628.65<br>628.81  | 628.10<br>628.20                 |
| 612     | 628.20<br>628.24  | 628.17<br>628.71                   | 628.40<br>628.17 (PVI)  | 628.44<br>628.34                 |
|         | 628.20<br>628.30  | 628.60<br>628.70                   | 629.00 (B/G)<br>629.10 (B/G)  | 629.20<br>629.30                 |
|         | 629.13<br>629.04 (PVI)  | 629.40 (SUMMIT)<br>629.50 (SUMMIT) |   |                                  |

|   |   |  |   |   |   |
|---|---|--|---|---|---|
| <p>         Civil Engineers<br/>         Municipal Consultants<br/>         Established 1911       </p> | DESIGNED - CB/SBC<br>DRAWN - ECW, MK, DMM<br>CHECKED - MDL<br>DATE - 12-7-12                      | REVISED -<br>REVISED -<br>REVISED -<br>REVISED - | <b>STATE OF ILLINOIS</b><br><b>DEPARTMENT OF TRANSPORTATION</b> | <b>ELM STREET</b><br><b>PAVING PLAN AND PROFILE</b>               | F.A.U. RTE. 1260<br>SECTION 12-00097-00-PV<br>COUNTY COOK<br>TOTAL SHEET SHEETS NO. 56 14 |
|   | 9933 Roosevelt Road<br>Woodstock, Illinois 61474-2780<br>Phone: 708/665-0300<br>Fax: 708/665-1312 |  |   | SCALE: 1"=20' H, 4'V   SHEET NO. 6 OF 7 SHEETS   STA. - TO STA. - | FIELD BOOK NO. : X<br>FED. ROAD DIST. NO. 1   ILLINOIS   FED. AID PROJECT                 |
|   |   |  |   | CONTRACT NO. 63771  | ILLINOIS   FED. AID PROJECT   |
|   |   |  |   | ILLINOIS   FED. AID PROJECT                                       | ILLINOIS   FED. AID PROJECT   |