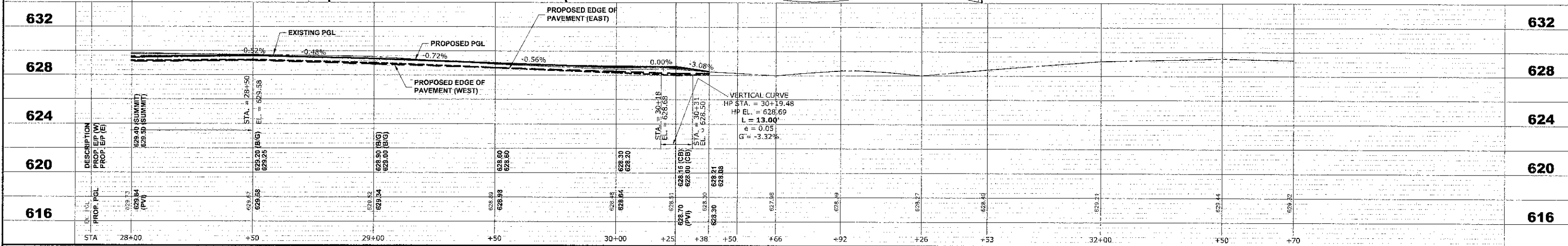
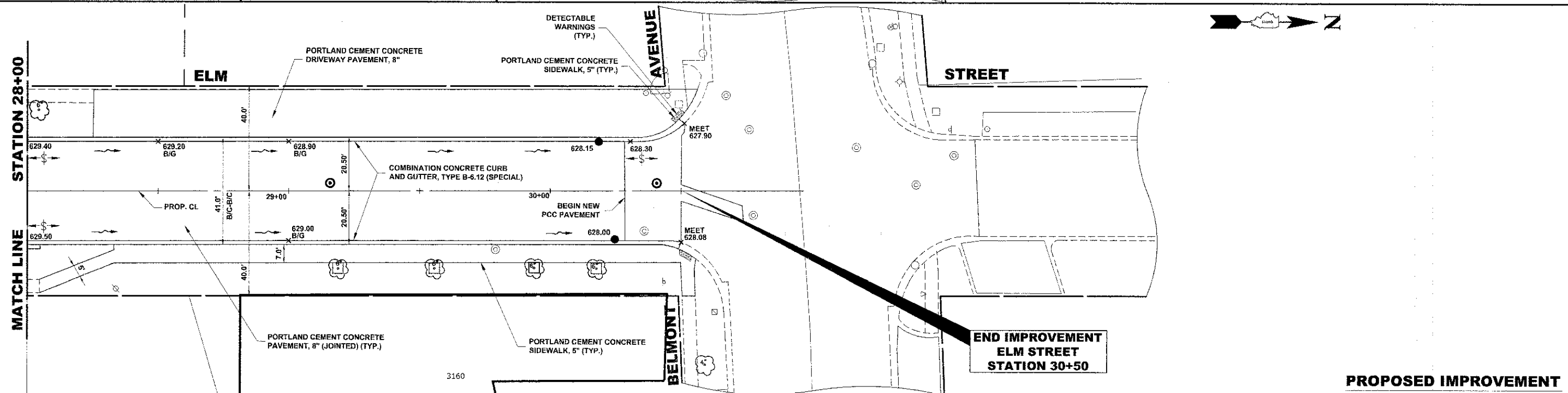
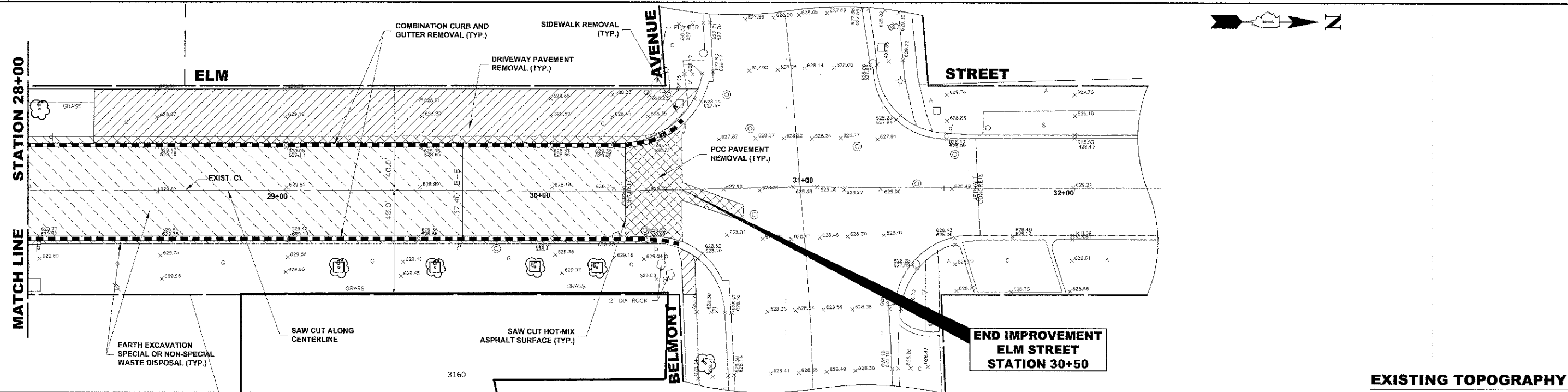


Drawing file: W:\Projects\70012002 - ELM STREET RECONSTRUCTION PHASE 1\TOPO\ELM STREET TOPO.dwg Dec 07, 2012 - 2:30pm



	Civil Engineers Municipal Consultants Established 1911	9933 Roswell Road Westchester, Illinois 60154-3780 Phone: 708/965-0386 Fax: 708/965-1212	DESIGNED - CB/SBC DRAWN - ECW, MK, DMM CHECKED - MDL DATE - 12-7-12	REVISED - REVISED - REVISED - REVISED -	<b>STATE OF ILLINOIS DEPARTMENT OF TRANSPORTATION</b>	<b>ELM STREET PAVING PLAN AND PROFILE</b>	F.A.U. RTE. 1280 SECTION 12-00097-00-PV COUNTY COOK TOTAL SHEET NO. 58 SHEETS 15	
					SCALE: 1"=20' H./4'V SHEET NO. 7 OF 7 SHEETS STA. - TO STA. -	FIELD BOOK NO. : X CONTRACT NO. 63771 FED. ROAD DIST. NO. 1, ILLINOIS FED. AID PROJECT		
								E.H.E. PROJECT NO. 760-12-05201