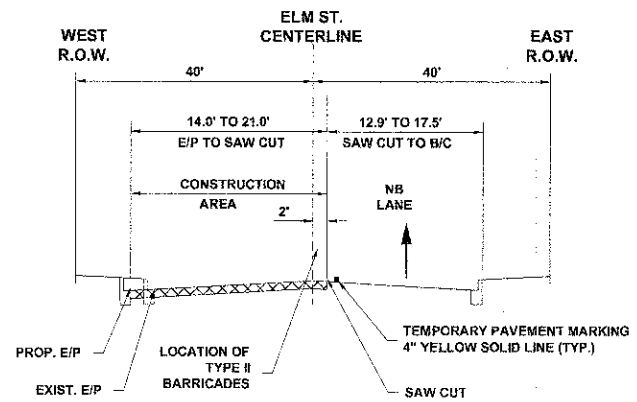
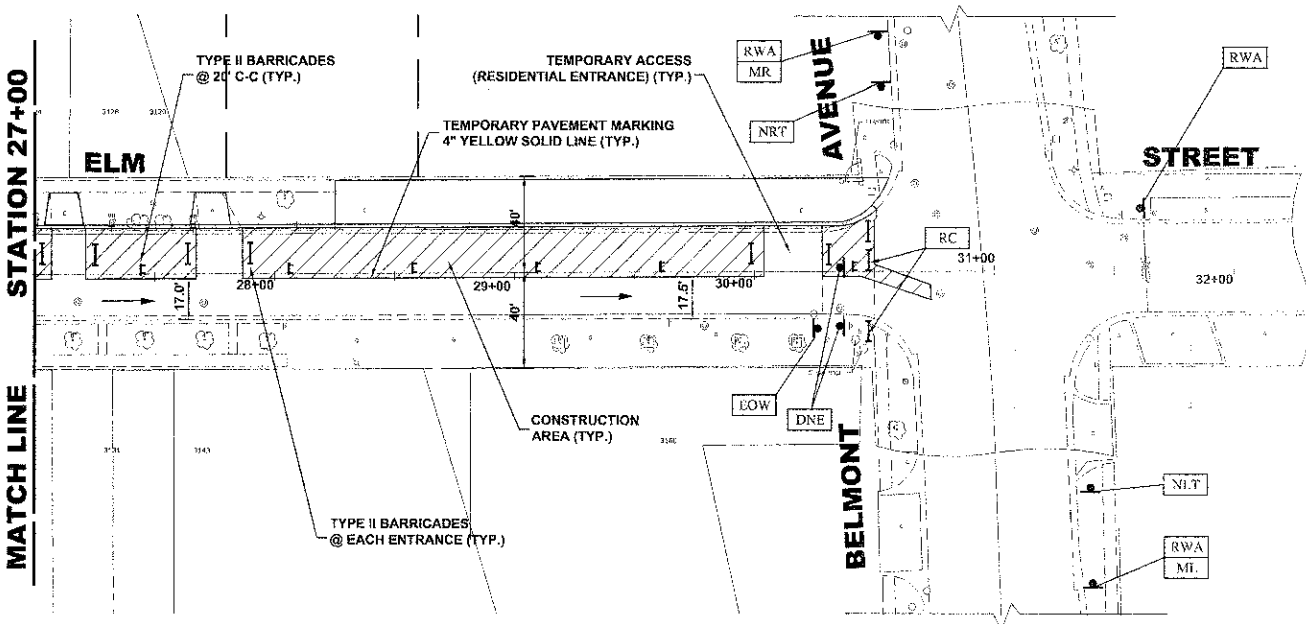


STAGE 2a CONSTRUCTION

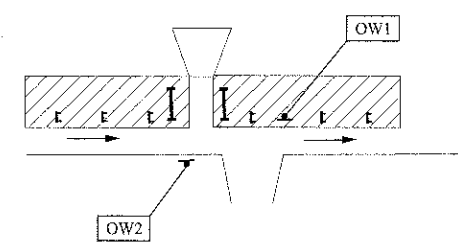
LEGEND

- CONSTRUCTION WORK ZONE
- DIRECTION OF TRAFFIC FLOW

1. WORK DURING THIS STAGE SHALL CONSIST OF THE REMOVAL AND REPLACEMENT OF UTILITIES AND ROADWAY AS INDICATED ON THE PROPOSED PAVEMENT AND UTILITY PLANS ALONG WEST SIDE OF ELM ST.
2. ALL THE PRIVATE AND COMMERCIAL DRIVEWAYS TO BE OPENED ALL THE TIME FOR TRAFFIC OR AS DIRECTED BY THE ENGINEER AND AS PAID FOR AS TEMPORARY ACCESS (PRIVATE ENTRANCE).
3. IDOT STANDARD 701501-05 SHALL BE USED TO ESTABLISH TRAFFIC CONTROL AND PROTECTION NECESSARY FOR SAW CUTTING, THE REMOVAL OF EXISTING PAVEMENT, EARTH EXCAVATION AS NECESSARY AND PERFORMING ALL THE PROPOSED PAVEMENT WORK ALONG WEST SIDE OF ELM ST.
4. INTERSECTIONS ARE TO REMAIN OPEN AT ALL TIMES, PAID FOR AS AGGREGATE FOR TEMPORARY ACCESS, EXCEPT FOR PREPARATION, POURING AND CURING OF NEW PAVEMENT. THE CONTRACTOR MUST STAGGER INTERSECTIONS THAT ARE CLOSED SUCH THAT NO TWO INTERSECTIONS ADJACENT TO EACH OTHER ARE CLOSED AT THE SAME TIME.



STAGE 2a CONSTRUCTION TYPICAL SECTION



TYPICAL DRIVEWAY DETAIL

NOTE:
ONE WAY (R6-1) SIGNS ARE REQUIRED IN FRONT OF ALL DRIVEWAYS AS SHOWN



♦ Civil Engineers
 ♦ Municipal Consultants
 ♦ Established 1911

DESIGNED - CB/SBC
 DRAWN - ECW, MK, DMM
 CHECKED - MDL
 DATE - 12-7-12

REVISED -
 REVISED -
 REVISED -
 REVISED -

STATE OF ILLINOIS
DEPARTMENT OF TRANSPORTATION

MAINTENANCE OF TRAFFIC PLAN
STAGE 2a CONSTRUCTION

SCALE: 1" = 40' SHEET NO. 2 OF 2 SHEETS STA. 18+50 TO STA. 32+00

F.A.U. RTE.	SECTION	COUNTY	TOTAL SHEETS	SHEET NO.
1260	12-00997-00-PV	COOK	56	25
FIELD BOOK NO. : X		CONTRACT NO. 63771		
FED. ROAD DIST. NO. 1		ILLINOIS FED. AID PROJECT		

Drawing File: W:\Projects\76612652 - ELM STREET RECONSTRUCTION PHASE 1\27-27_Surge_Construction - Mar 05, 2013 - 4:56pm