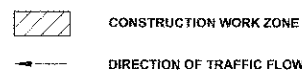
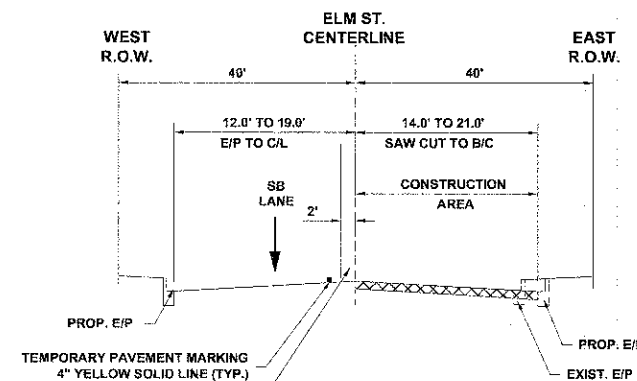
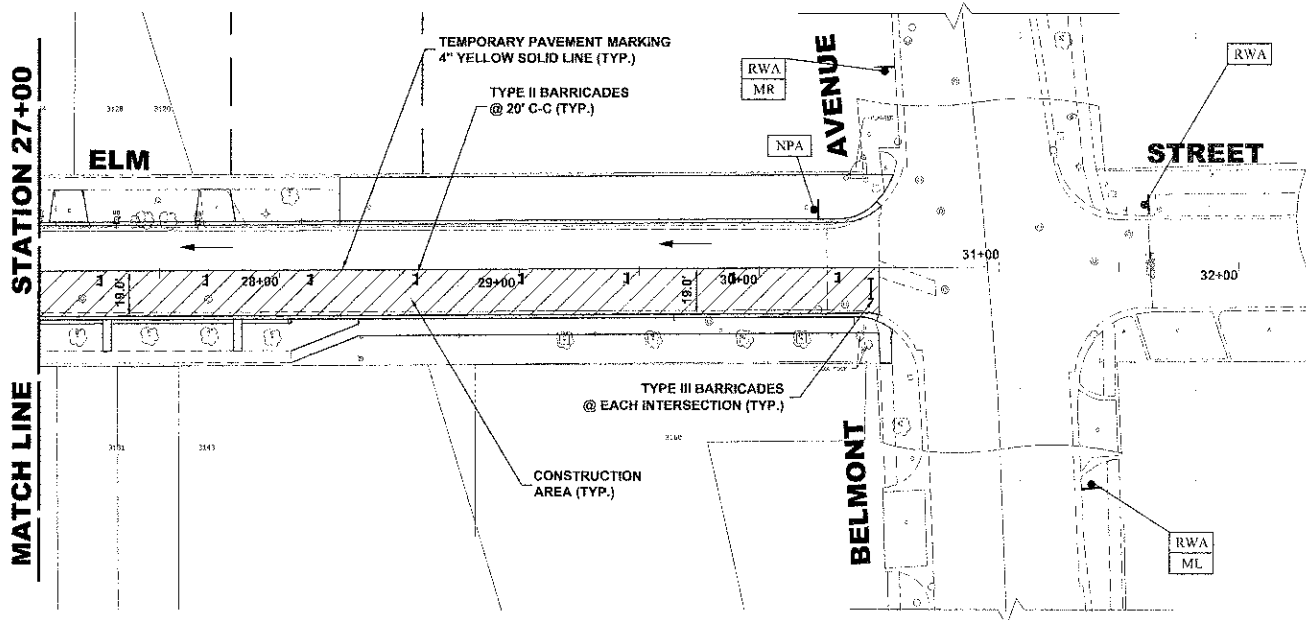


STAGE 2b CONSTRUCTION

LEGEND

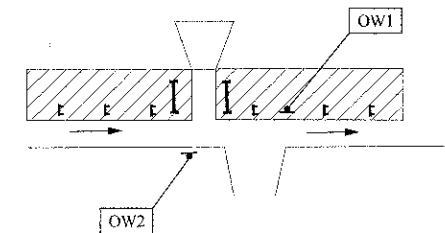


1. WORK DURING THIS STAGE SHALL CONSIST OF THE REMOVAL AND REPLACEMENT OF UTILITIES AND ROADWAY AS INDICATED ON THE PROPOSED PAVEMENT AND UTILITY PLANS ALONG EAST SIDE OF ELM ST.
2. ALL THE PRIVATE AND COMMERCIAL DRIVEWAYS TO BE OPENED ALL THE TIME FOR TRAFFIC OR AS DIRECTED BY THE ENGINEER AND AS PAID FOR AS TEMPORARY ACCESS (PRIVATE ENTRANCE).
3. IDOT STANDARD 701501-05 SHALL BE USED TO ESTABLISH TRAFFIC CONTROL AND PROTECTION NECESSARY FOR SAW CUTTING, THE REMOVAL OF EXISTING PAVEMENT, EARTH EXCAVATION AS NECESSARY AND PERFORMING ALL THE PROPOSED PAVEMENT WORK ALONG EAST SIDE OF ELM ST.
4. INTERSECTIONS ARE TO REMAIN OPEN AT ALL TIMES, PAID FOR AS AGGREGATE FOR TEMPORARY ACCESS, EXCEPT FOR PREPARATION, POURING AND CURING OF NEW PAVEMENT. THE CONTRACTOR MUST STAGGER INTERSECTIONS THAT ARE CLOSED SUCH THAT NO TWO INTERSECTIONS ADJACENT TO EACH OTHER ARE CLOSED AT THE SAME TIME.



**STAGE 2b CONSTRUCTION
TYPICAL SECTION**

NOTE:
ONE WAY (R6-1) SIGNS ARE REQUIRED
IN FRONT OF ALL DRIVEWAYS AS SHOWN



TYPICAL DRIVEWAY DETAIL



♦ Civil Engineers
 ♦ Municipal Consultants
 ♦ Established 1911
 9933 Roosevelt Road
 Wheeling, IL 60094-4790
 Phone: 708/965-8000
 Fax: 708/965-1313

DESIGNED -	CB/SBC	REVISED -
DRAWN -	ECW, MK, DMM	REVISED -
CHECKED -	MDL	REVISED -
DATE -	12-7-12	REVISED -

**STATE OF ILLINOIS
DEPARTMENT OF TRANSPORTATION**

**MAINTENANCE OF TRAFFIC PLAN
STAGE 2b CONSTRUCTION**

SCALE: 1" = 40' SHEET NO. 2 OF 2 SHEETS STA. 18+50 TO STA. 32+00

F.A.U. RTE.	SECTION	COUNTY	TOTAL SHEETS	SHEET NO.
1260	12-00097-00-PV	COOK	56	27
FIELD BOOK NO. : X		CONTRACT NO. 63771		
FED. ROAD DIST. NO. 1 ILLINOIS FED. AID PROJECT				