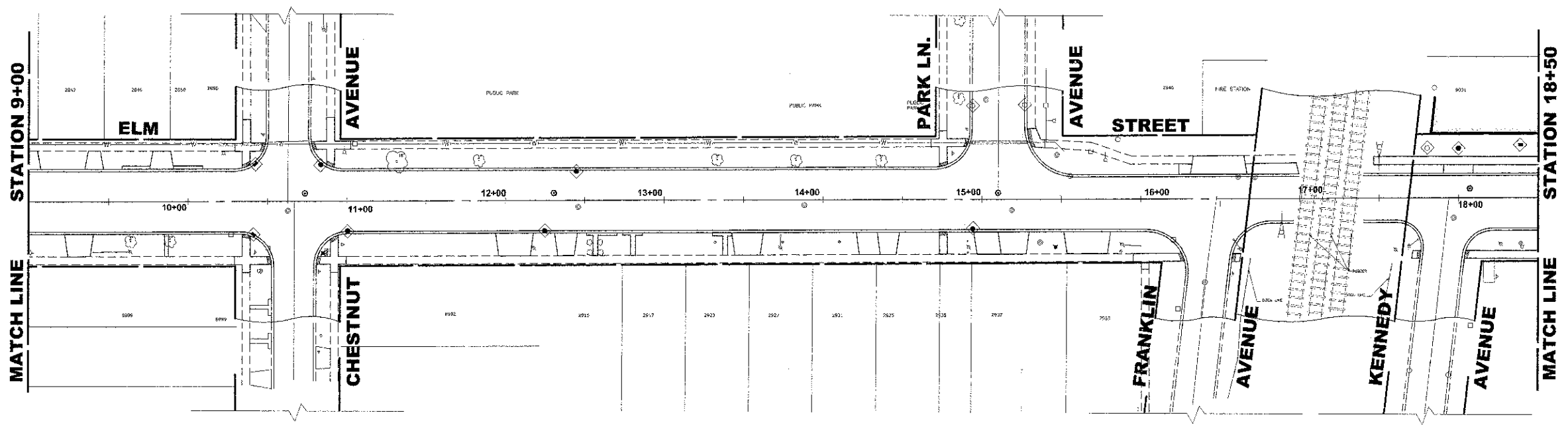
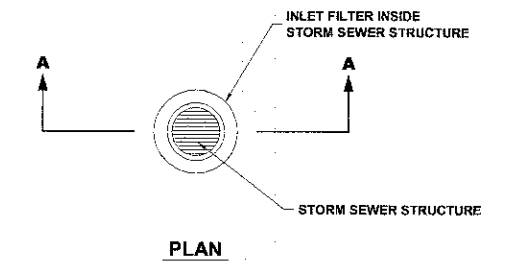
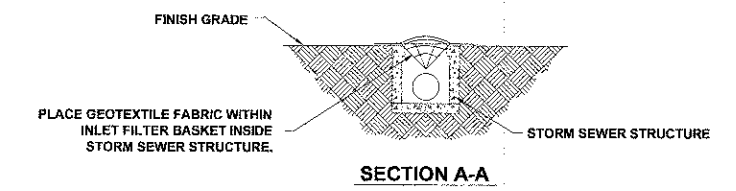


EROSION CONTROL NOTES

1. SEE IDOT STANDARD 280001-06 FOR TEMPORARY EROSION CONTROL SYSTEMS.
2. THE CONTRACTOR SHALL ENSURE THAT ADJACENT PROPERTIES REMAIN PROTECTED FROM SEDIMENT DEPOSITION.
3. SOIL STOCKPILES SHALL BE PROTECTED WITH PERIMETER EROSION BARRIER OR OTHER EROSION PROTECTION SPECIFIED BY THE RESIDENT ENGINEER. THE COST SHALL BE INCLUDED IN THE UNIT PRICE FOR THE INDIVIDUAL SOIL MATERIALS.
4. WHEREVER CONSTRUCTION VEHICLE ACCESS ROUTES INTERSECT PAVED PUBLIC ROADS. PROVISIONS SHALL BE MADE TO MINIMIZE THE TRANSPORT OF SEDIMENT BY RUNOFF OR VEHICLE TRACKING ONTO THE PAVED SURFACE. THE PROVISIONS MAY INCLUDE SPRAYING VEHICLE WHEELS TO CLEAR SEDIMENT BEFORE EXITING THE CONSTRUCTION SITE OR OTHER MEASURES APPROVED BY THE ENGINEER.
5. THE CONTRACTOR SHALL UTILIZE A SPECIFIC CONCRETE WASH OUT AREA LOCATED AWAY FROM DRAINAGE STRUCTURES, AT A FREQUENCY OF NO MORE THEN 1 X PER 1000' LOCATION TO BE DETERMINED IN FIELD

LEGEND

| SYMBOL | DESCRIPTION |
|--------|---|
| | INLET FILTER/SEDIMENT CONTROL, DRAINAGE STRUCTURE |



♦ Civil Engineers
 ♦ Municipal Consultants
 ♦ Established 1911

9933 Roosevelt Road
 Westchester, Illinois 60154-2780
 Phone: 708/965-4300
 Fax: 708/966-4312

| | | | |
|------------|--------------|-----------|--|
| DESIGNED - | CB/SBC | REVISED - | |
| DRAWN - | ECW, MK, DMM | REVISED - | |
| CHECKED - | MDL | REVISED - | |
| DATE - | 12-7-12 | REVISED - | |

STATE OF ILLINOIS
DEPARTMENT OF TRANSPORTATION

EROSION CONTROL PLAN

SCALE: 1" = 40' SHEET NO. 1 OF 2 SHEETS STA. - TO STA. -

| F.A.U. RTE. | SECTION | COUNTY | TOTAL SHEETS | SHEET NO. |
|--------------------------------|----------------|--------------------|--------------|-----------|
| 1280 | 12-00097-00-PV | COOK | 56 | 28 |
| FIELD BOOK NO. : X | | CONTRACT NO. 63771 | | |
| FED. ROAD DIST. NO. 1 ILLINOIS | | FED. AID PROJECT | | |

Drawing file: W:\Projects\78012002 - ELM STREET RECONSTRUCTION PHASE 1\28-44_ELM_4thcycle.dwg Date: 07, 2012 - 2:54pm