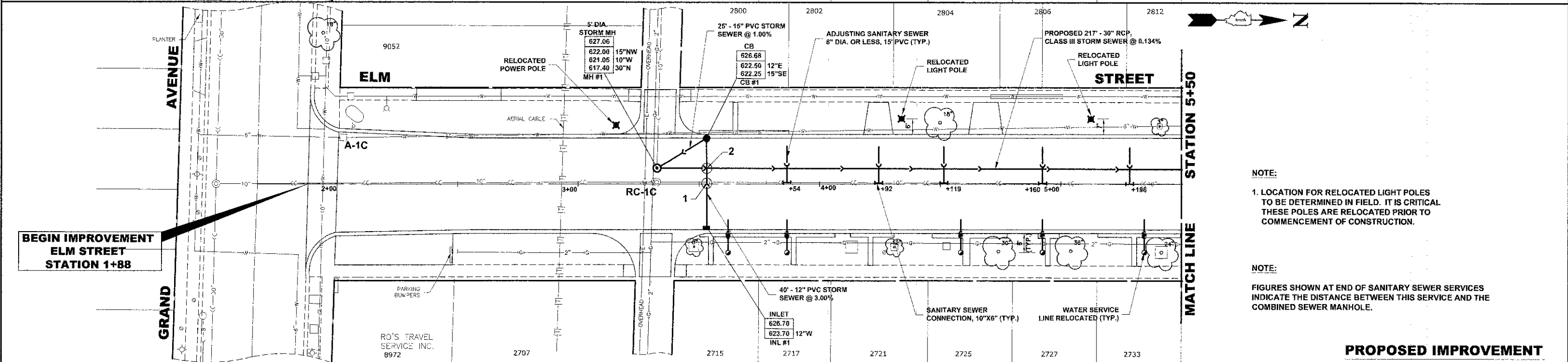
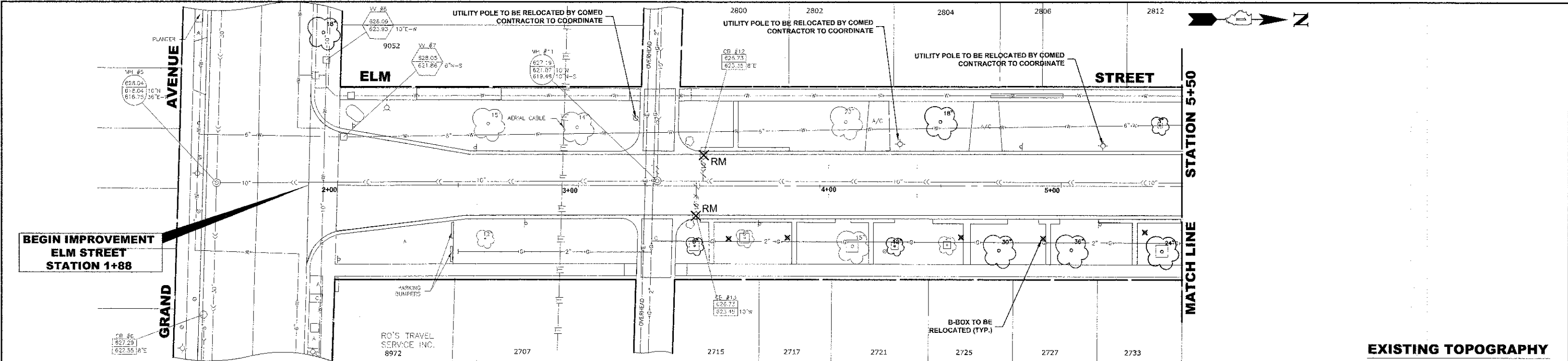
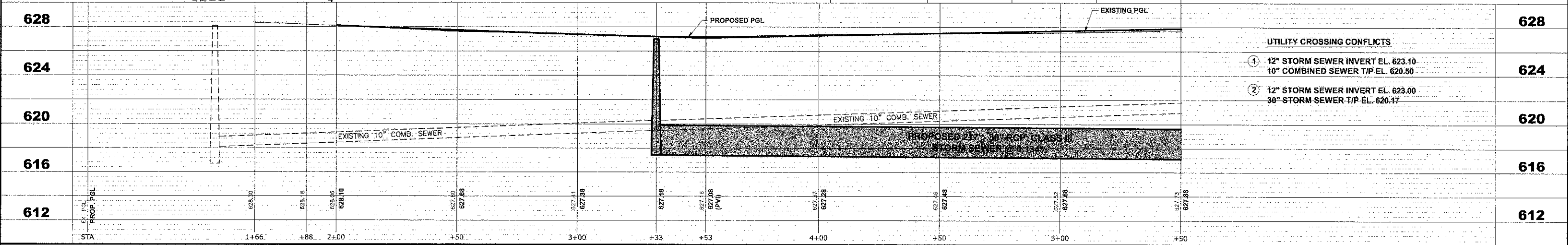


Drawing file: W:\Projects\76012022 - ELM STREET RECONSTRUCTION PHASE II\TOPO\ELM STREET TOPO.dwg Date: 07/20/23 - 2:36pm



**NOTE:**  
1. LOCATION FOR RELOCATED LIGHT POLES TO BE DETERMINED IN FIELD. IT IS CRITICAL THESE POLES ARE RELOCATED PRIOR TO COMMENCEMENT OF CONSTRUCTION.

**NOTE:**  
FIGURES SHOWN AT END OF SANITARY SEWER SERVICES INDICATE THE DISTANCE BETWEEN THIS SERVICE AND THE COMBINED SEWER MANHOLE.



	<p>◆ Civil Engineers ◆ Municipal Consultants ◆ Established 1911</p> <p>9933 Roosevelt Road Waukegan, Illinois 60154-3780 Phone: 708/865-6300 Fax: 708/865-6112</p>	<p><b>STATE OF ILLINOIS</b> <b>DEPARTMENT OF TRANSPORTATION</b></p>	<p><b>ELM STREET</b> <b>UTILITY PLAN AND PROFILE</b></p>	<p>F.A.U. RTE. 1260 SECTION 12-00097-00-PV COUNTY COOK TOTAL SHEETS 56 SHEET NO. 30</p>	<p>DATE 12-7-12 DESIGNED - CB/SBC DRAWN - ECW, MK, DMM CHECKED - MDL REVISED - REVISED - REVISED - REVISED -</p>	<p>SCALE: 1"=20' H, V SHEET NO. 1 OF 7 SHEETS STA. - TO STA. -</p>	<p>FIELD BOOK NO.: X FED. ROAD DIST. NO. 1 ILLINOIS CONTRACT NO. 63771 FED. AID PROJECT</p>
--	--	---	--	---	--	--	---