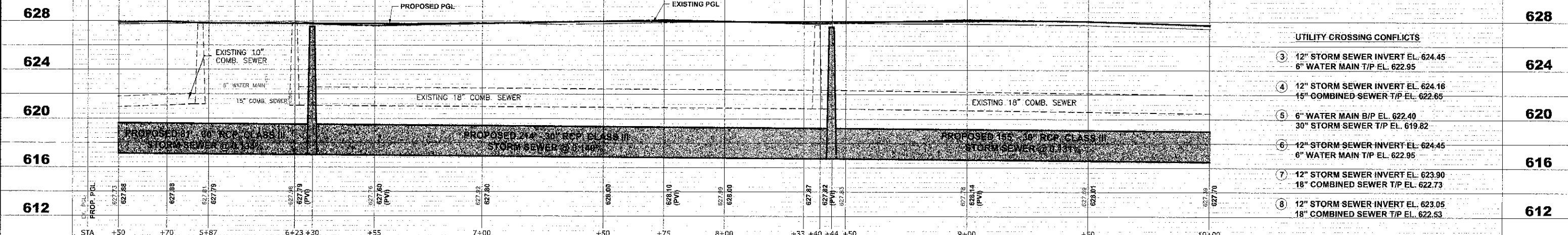


NOTE:
1. LOCATION FOR RELOCATED LIGHT POLES TO BE DETERMINED IN FIELD. IT IS CRITICAL THESE POLES ARE RELOCATED PRIOR TO COMMENCEMENT OF CONSTRUCTION.

NOTE:
FIGURES SHOWN AT END OF SANITARY SEWER SERVICES INDICATE THE DISTANCE BETWEEN THIS SERVICE AND THE COMBINED SEWER MANHOLE.



UTILITY CROSSING CONFLICTS	
③	12" STORM SEWER INVERT EL. 624.45 6" WATER MAIN T/P EL. 622.95
④	12" STORM SEWER INVERT EL. 624.16 15" COMBINED SEWER T/P EL. 622.65
⑤	6" WATER MAIN B/P EL. 622.40 30" STORM SEWER T/P EL. 619.82
⑥	12" STORM SEWER INVERT EL. 624.45 6" WATER MAIN T/P EL. 622.95
⑦	12" STORM SEWER INVERT EL. 623.90 18" COMBINED SEWER T/P EL. 622.73
⑧	12" STORM SEWER INVERT EL. 623.05 18" COMBINED SEWER T/P EL. 622.53

HANCOCK ENGINEERING
 Civil Engineers
 Municipal Consultants
 Established 1911
 9933 Roswell Road
 Worthen, Illinois 6154-3790
 Phone: 708/865-0390
 Fax: 708/865-1112

DESIGNED -	CB/SBC	REVISED -
DRAWN -	ECW, MK, DMM	REVISED -
CHECKED -	MDL	REVISED -
DATE -	12-7-12	REVISED -

STATE OF ILLINOIS
DEPARTMENT OF TRANSPORTATION

ELM STREET
UTILITY PLAN AND PROFILE
 SCALE: 1"=20' H./V
 SHEET NO. 2 OF 7 SHEETS
 STA. - TO STA. -

F.A.U. RTE.	SECTION	COUNTY	TOTAL SHEETS	SHEET NO.
1260	12-00097-00-PV	COOK	56	31
FIELD BOOK NO. : X		CONTRACT NO. 63771		
FED. ROAD DIST. NO. 1 ILLINOIS		FED. AID PROJECT		