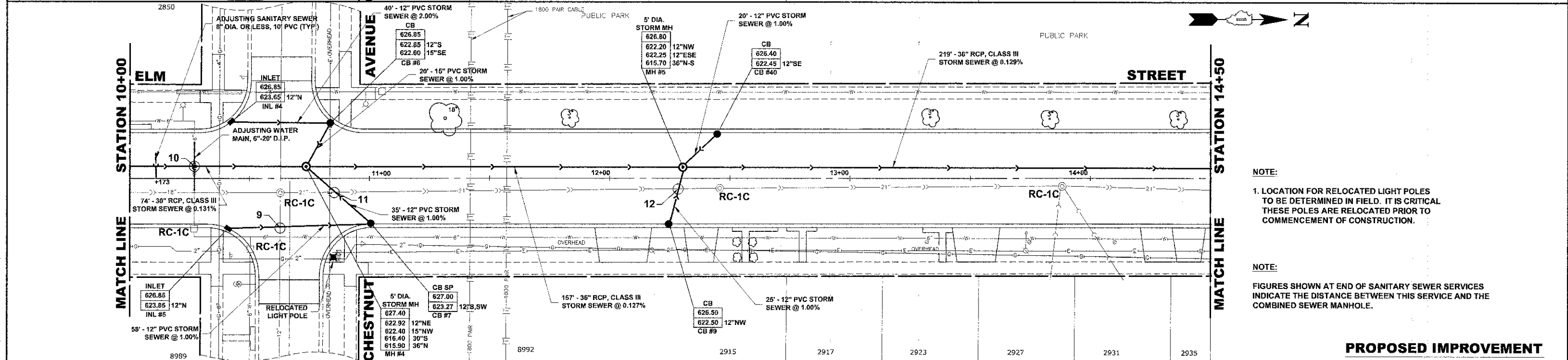


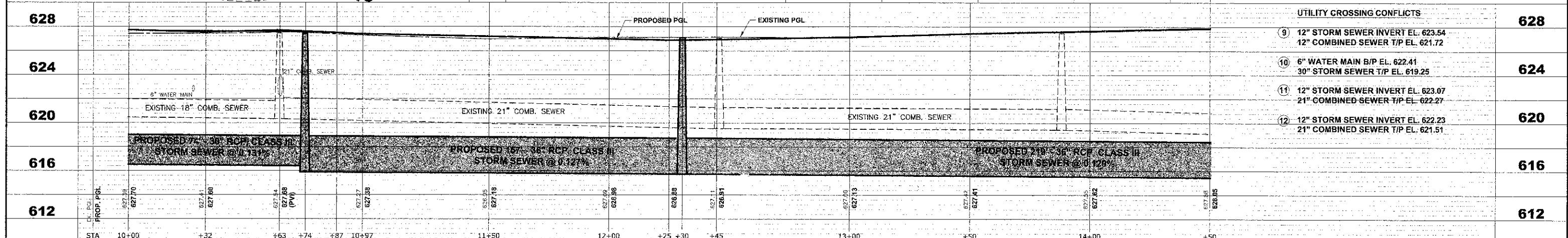
EXISTING TOPOGRAPHY



NOTE:
1. LOCATION FOR RELOCATED LIGHT POLES TO BE DETERMINED IN FIELD. IT IS CRITICAL THESE POLES ARE RELOCATED PRIOR TO COMMENCEMENT OF CONSTRUCTION.

NOTE:
FIGURES SHOWN AT END OF SANITARY SEWER SERVICES INDICATE THE DISTANCE BETWEEN THIS SERVICE AND THE COMBINED SEWER MANHOLE.

PROPOSED IMPROVEMENT



	Civil Engineers Municipal Consultants Established 1911	9933 Roosevelt Road Wheeling, Illinois 60154-7780 Phone: 708/665-0390 Fax: 708/665-0212	STATE OF ILLINOIS DEPARTMENT OF TRANSPORTATION	ELM STREET UTILITY PLAN AND PROFILE	F.A.U. RTE. 1260 SECTION 12-00097-00-PV COUNTY COOK TOTAL SHEETS 56 SHEET NO. 32 FIELD BOOK NO.: X CONTRACT NO. 63771 FED. ROAD DIST. NO. 1 ILLINOIS FED. AID PROJECT
	DESIGNED - CB/SBC	REVISED -	SCALE: 1"=20' H, 4"V		SHEET NO. 3 OF 7 SHEETS
	DRAWN - ECW, MK, DMM	REVISED -	STA. - TO STA. -		TO STA. -
	CHECKED - MDL	REVISED -			
DATE - 12-7-12	REVISED -				E.H.E. PROJECT NO. 760-12-05201