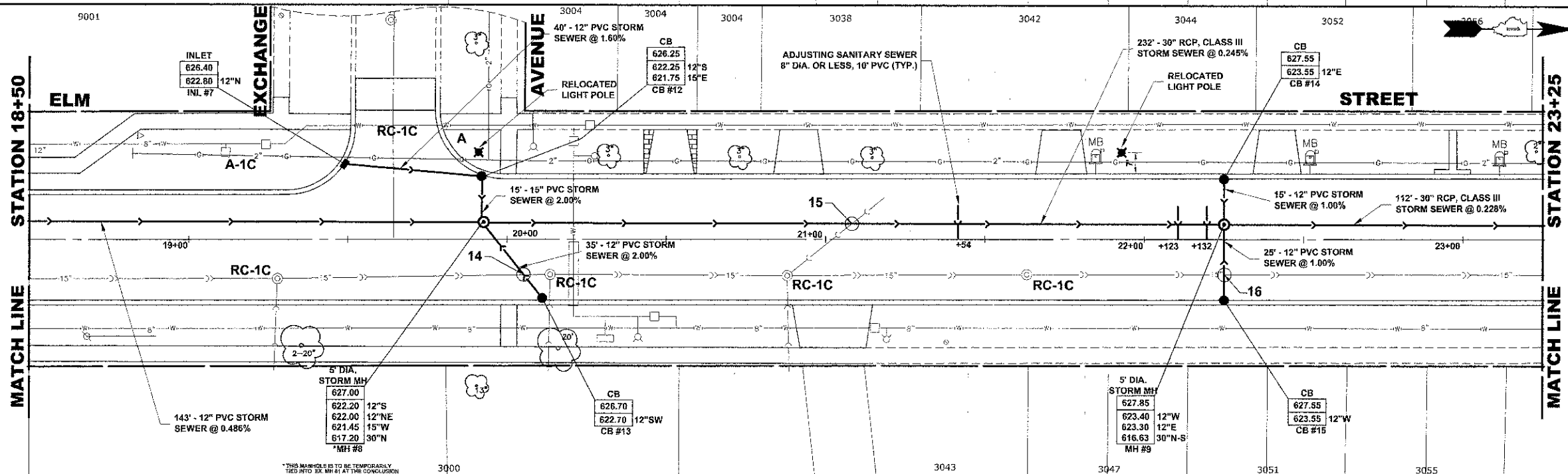


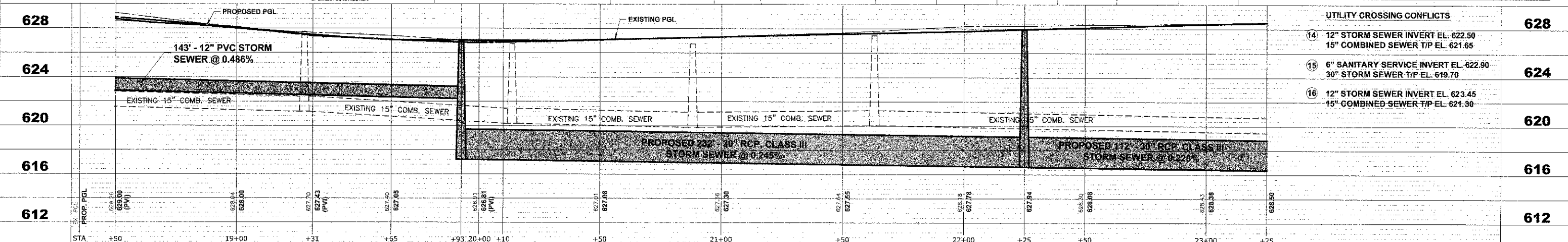
EXISTING TOPOGRAPHY



NOTE:
1. LOCATION FOR RELOCATED LIGHT POLES TO BE DETERMINED IN FIELD. IT IS CRITICAL THESE POLES ARE RELOCATED PRIOR TO COMMENCEMENT OF CONSTRUCTION.

NOTE:
FIGURES SHOWN AT END OF SANITARY SEWER SERVICES INDICATE THE DISTANCE BETWEEN THIS SERVICE AND THE COMBINED SEWER MANHOLE.

PROPOSED IMPROVEMENT



UTILITY CROSSING CONFLICTS		
14	12" STORM SEWER INVERT EL. 622.50 15" COMBINED SEWER T/P EL. 621.65	628
15	6" SANITARY SERVICE INVERT EL. 622.90 30" STORM SEWER T/P EL. 619.70	624
16	12" STORM SEWER INVERT EL. 623.45 15" COMBINED SEWER T/P EL. 621.30	620

HANCOCK ENGINEERING
 Civil Engineers
 Municipal Consultants
 Established 1911
 9933 Roosevelt Road
 Wortham, Illinois 60154-2780
 Phone: 708-965-4390
 Fax: 708-965-1212

DESIGNED -	CB/SBC	REVISED -	
DRAWN -	ECW, MK, DMM	REVISED -	
CHECKED -	MDL	REVISED -	
DATE -	12-7-12	REVISED -	

**STATE OF ILLINOIS
DEPARTMENT OF TRANSPORTATION**

**ELM STREET
UTILITY PLAN AND PROFILE**

SCALE: 1"=20' H./V' SHEET NO. 5 OF 7 SHEETS STA. - TO STA. -

F.A.U. RTE.	SECTION	COUNTY	TOTAL SHEETS	SHEET NO.
1260	12-00097-00-PV	COOK	56	34
FIELD BOOK NO. : X		CONTRACT NO. 63771		
FED. ROAD DIST. NO. 1		ILLINOIS FED. AID PROJECT		

Drawing file: W:\Projects\14012052 - ELM STREET RECONSTRUCTION PHASE II\TOPO\ELM STREET TOPO.dwg Date: 07/10/12 - 2:35pm