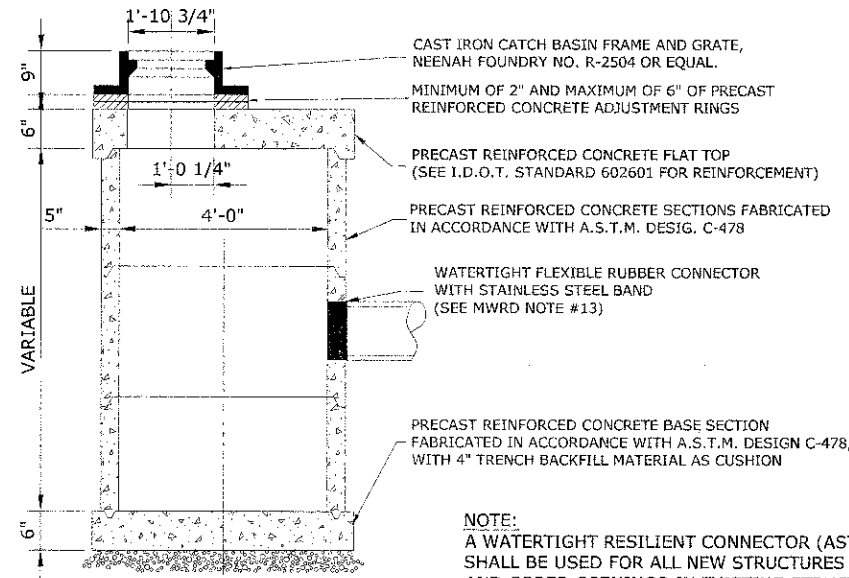


ALL WATER MAIN RELOCATION SHALL BE DONE WITH SHUT DOWN CONNECTIONS

### ADJUSTING WATER MAIN, 6"

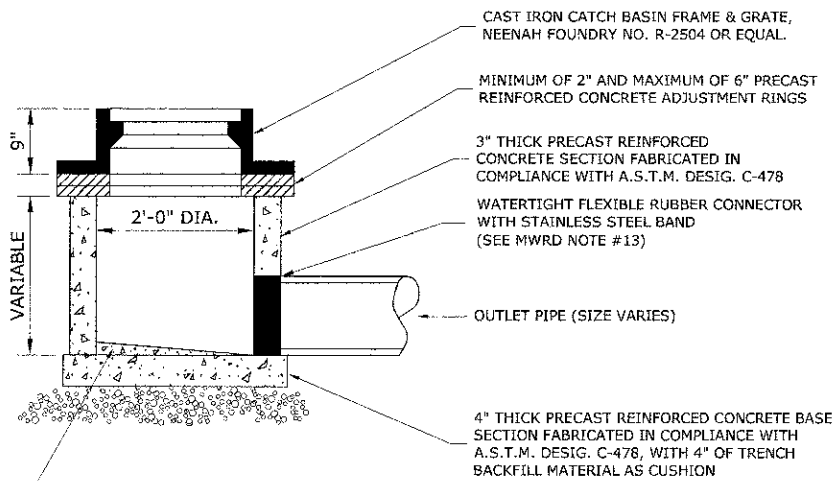
### DUCTILE IRON PIPE SPECIFICATIONS

1. ALL DUCTILE IRON PIPE WATER MAINS AND SEWER MAINS SHALL BE CLASS 52, CEMENT-LINED AND TAR-COATED, MEETING THE REQUIREMENTS OF SPECIFICATIONS ANSI/AWWA C151/A21.51 WITH "PUSH-ON" JOINTS MEETING THE REQUIREMENTS OF SPECIFICATIONS ANSI/AWWA C111/A21.11, WHERE SPECIFIED ON THE PLANS, OR IN THE SPECIFICATIONS, MECHANICAL JOINTS AND "LOCK-TYPE" JOINTS SHALL BE USED IN LIEU OF "PUSH-ON" JOINTS.
2. ALL PIPE FITTINGS AND SPECIAL CASTINGS SHALL BE DUCTILE IRON CONFORMING TO ANSI/AWWA C153/A21.53 AND ANSI/AWWA C111/A21.11 SPECIFICATIONS AND SHALL MEET THE MINIMUM REQUIREMENTS OF CLASS 150 DUCTILE IRON PIPE. IF CERTAIN FITTINGS ARE NOT MANUFACTURED IN DUCTILE IRON, CAST IRON FITTINGS SHALL BE ACCEPTABLE. MECHANICAL JOINT TYPE FITTINGS SHALL BE USED.
3. ALL PROPOSED DUCTILE IRON PIPE WATER MAIN AND SEWER MAIN WILL BE ENCASED WITHIN FOUR (4) MIL THICK, HIGH-DENSITY POLYETHYLENE TUBING. ALL FITTINGS SHALL BE ENCASED IN A DOUBLE-LAYER OF POLYETHYLENE TUBING. THE POLYETHYLENE MATERIAL SHALL BE MANUFACTURED AND INSTALLED IN COMPLIANCE WITH ANSI/AWWA C105/A21.5. ALL PROPOSED WATER AND SEWER SERVICES SHALL BE ENCASED IN POLYETHYLENE TUBING FOR A MINIMUM DISTANCE OF THREE FEET (3') FROM THE PROPOSED WATER MAIN AND SEWER MAIN.



NOTE:  
A WATERTIGHT RESILIENT CONNECTOR (ASTM C-923)  
SHALL BE USED FOR ALL NEW STRUCTURES  
AND CORED OPENINGS IN EXISTING STRUCTURES  
BETWEEN STRUCTURE WALL AND SEWER PIPE.

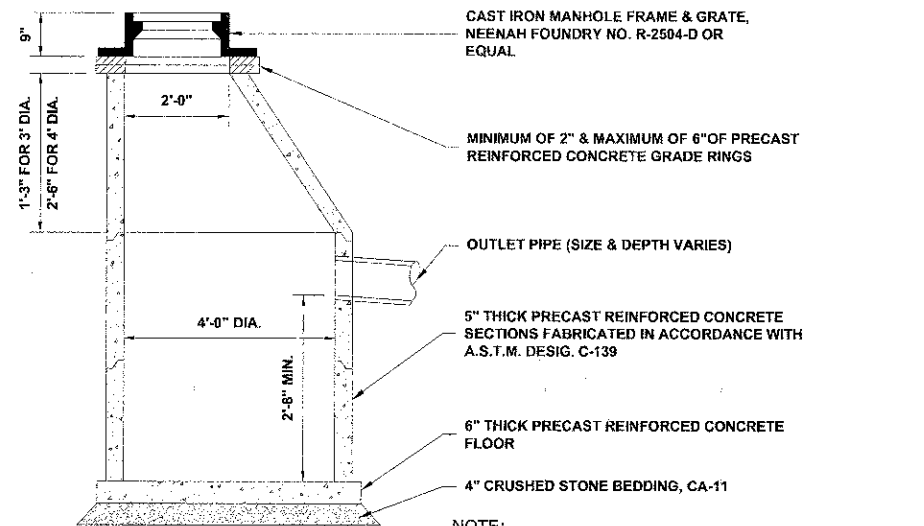
### CATCH BASINS, TYPE A, 4' DIAMETER, TYPE 1 FRAME, OPEN LID (SPECIAL)



CONCRETE BENCH  
SLOPE 1"/FOOT

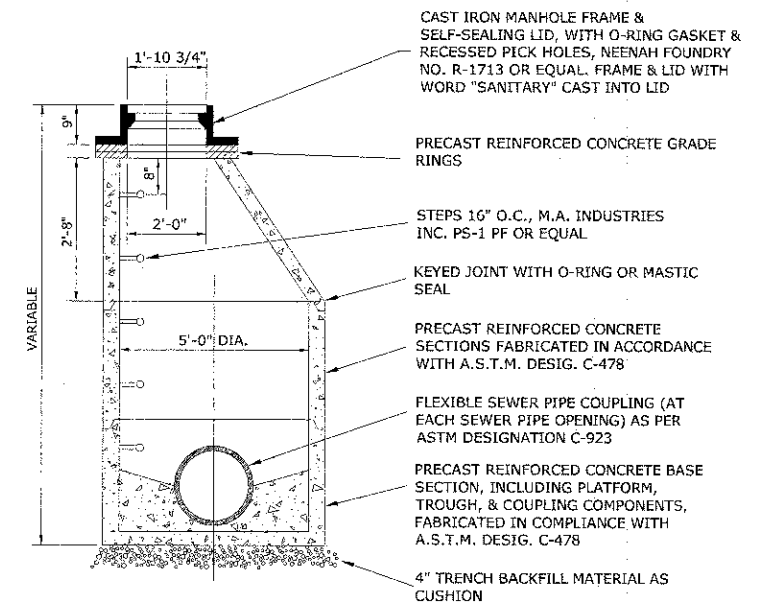
### INLETS, TYPE A, TYPE 1 FRAME, OPEN LID

NOTE: THE WATER-TIGHT RESILIENT CONNECTOR (ASTM C 923) SHALL  
BE PROVIDED FOR CORED OPENINGS BETWEEN STRUCTURE AND SEWER PIPE.



NOTE:  
A WATERTIGHT RESILIENT CONNECTOR (ASTM C-923)  
SHALL BE USED FOR ALL NEW STRUCTURES  
AND CORED OPENINGS IN EXISTING STRUCTURES  
BETWEEN STRUCTURE WALL AND SEWER PIPE.

### CATCH BASINS, TYPE A, 4' DIAMETER, TYPE 1 FRAME, OPEN LID



NOTE: THE WATER-TIGHT RESILIENT CONNECTOR (ASTM C 923) SHALL  
BE PROVIDED FOR CORED OPENINGS BETWEEN STRUCTURE AND SEWER PIPE.

### MANHOLES, TYPE A, 5' DIAMETER, TYPE 1 FRAME, CLOSED LID



Civil Engineers  
Municipal Consultants  
Established 1911

9933 Riverchase Blvd.  
Wheaton, Illinois 60154-2780  
Phone: 708-965-4990  
Fax: 708-965-3323

DESIGNED -	CB/SBC	REVISED -	
DRAWN -	ECW, MK, DMM	REVISED -	
CHECKED -	MDL	REVISED -	
DATE -	12-7-12	REVISED -	

STATE OF ILLINOIS  
DEPARTMENT OF TRANSPORTATION

DRAINAGE AND UTILITIES DETAILS

SCALE: NONE SHEET NO. 2 OF 4 SHEETS STA. TO STA.

F.A.D. RTE.	SECTION	COUNTY	TOTAL SHEETS	SHEET NO.
1260	12-00097-00-PV	COOK	56	37
FIELD BOOK NO. : X		CONTRACT NO. 63771		
FED. ROAD DIST. NO. 1 ILLINOIS FED. AID PROJECT				

E.H.E. PROJECT NO. 760-12-05201