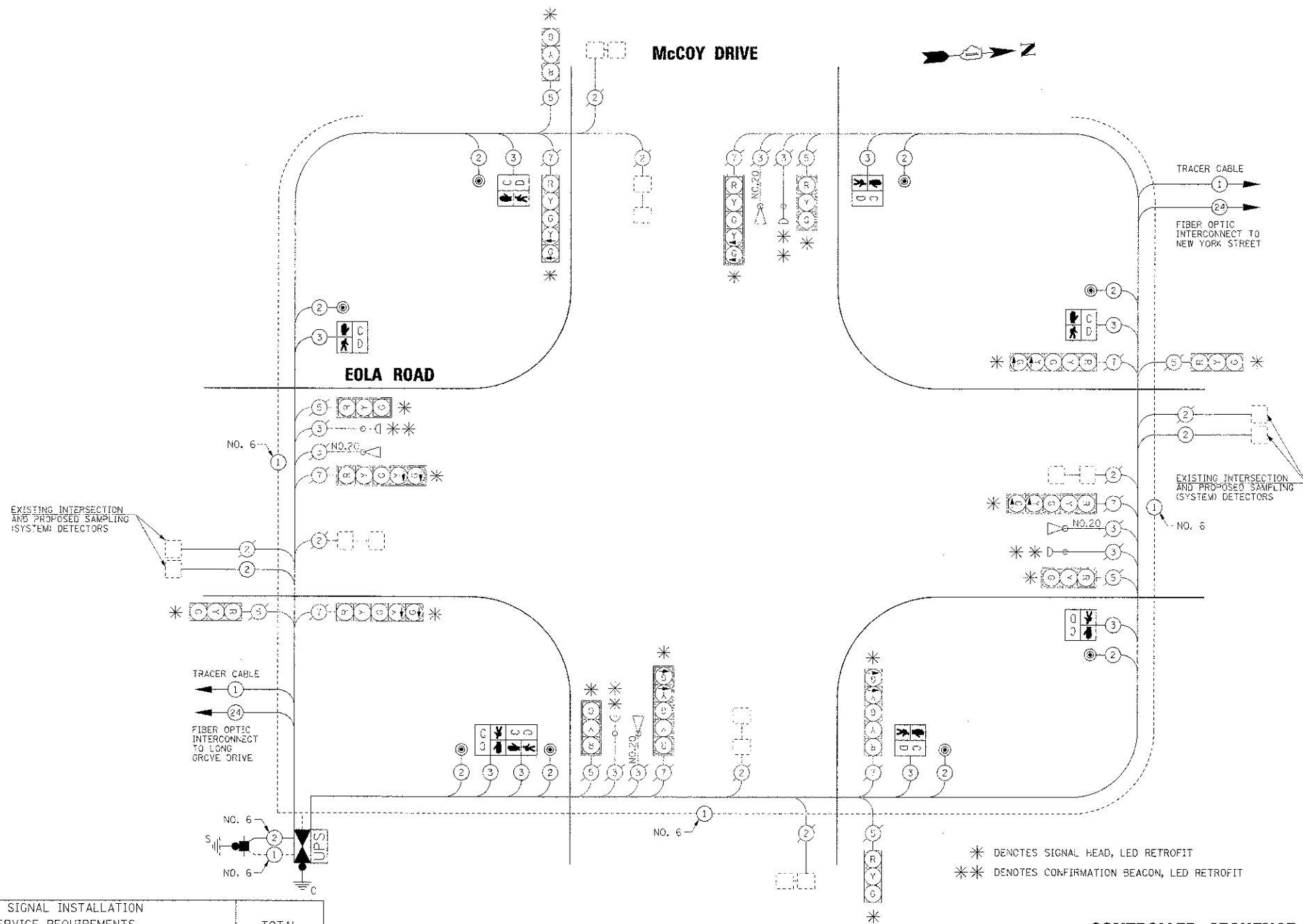


PLAN	SURVEYED	DATE
NOTED	PLANNED	DATE
NOTED	DESIGNED	DATE
NOTED	CHECKED	DATE
NOTED	APPROVED	DATE

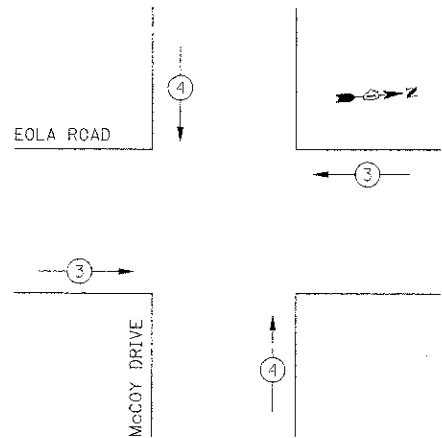
PROFILE	SURVEYED	DATE
NOTED	PLANNED	DATE
NOTED	DESIGNED	DATE
NOTED	CHECKED	DATE
NOTED	APPROVED	DATE



SCHEDULE OF QUANTITIES

PAY ITEM DESCRIPTION	UNIT	McCOY DRIVE
SERVICE INSTALLATION - GROUND MOUNTED	EACH	1
MAINTENANCE OF EXISTING TRAFFIC SIGNAL INSTALLATION	EACH	1
GROUNDING EXISTING HANDHOLE FRAME AND COVER	EACH	7
ELECTRIC CABLE IN CONDUIT, SIGNAL NO. 14 2C	FOOT	1447
ELECTRIC CABLE IN CONDUIT, SIGNAL NO. 14 3C	FOOT	1503
ELECTRIC CABLE IN CONDUIT, LEAD-IN, NO. 14 1 PAIR	FOOT	799.5
ELECTRIC CABLE IN CONDUIT, SERVICE, NO. 6 2 C	FOOT	27.5
ELECTRIC CABLE IN CONDUIT, EQUIPMENT GROUNDING CONDUCTOR, NO. 6 1C	FOOT	610
PEDESTRIAN SIGNAL HEAD, LED, 1-FACE, BRACKET MOUNTED WITH COUNTDOWN TIMER	EACH	6
PEDESTRIAN SIGNAL HEAD, LED, 2-FACE, BRACKET MOUNTED WITH COUNTDOWN TIMER	EACH	1
INDUCTIVE LOOP DETECTOR	EACH	10
LIGHT DETECTOR AMPLIFIER	EACH	1
PEDESTRIAN PUSH-BUTTON	EACH	8
MODIFY EXISTING CONTROLLER FOUNDATION	EACH	1
REMOVE ELECTRIC CABLE FROM CONDUIT	FOOT	2760.5
REMOVE EXISTING TRAFFIC SIGNAL EQUIPMENT	EACH	1
ETHERNET SWITCH	EACH	1
FULL ACTUATED CONTROLLER AND TYPE IV CABINET, SPECIAL	EACH	1
UNINTERRUPTABLE POWER SUPPLY, SPECIAL	EACH	1
SIGNAL HEAD, LED, 1-FACE, 3-SECTION, BRACKET MOUNTED, RETROFIT	EACH	4
SIGNAL HEAD, LED, 1-FACE, 3-SECTION, MAST ARM MOUNTED, RETROFIT	EACH	4
SIGNAL HEAD, LED, 1-FACE, 5-SECTION, MAST ARM MOUNTED, RETROFIT	EACH	4
SIGNAL HEAD, LED, 1-FACE, 5-SECTION, BRACKET MOUNTED, RETROFIT	EACH	4
EVP CONFIRMATION BEACON, LED RETROFIT	EACH	4

I.D.O.T TRAFFIC SIGNAL INSTALLATION ELECTRICAL SERVICE REQUIREMENTS					
TYPE	NO. LAMPS	WATTAGE		% OPERATION	TOTAL WATTAGE
		INCAND.	LED		
SIGNAL (RED)	16		17	0.50	136
(YELLOW)	16		25	0.25	100
(GREEN)	16		15	0.25	60
ARROW	16		12	0.10	19.2
PED. SIGNAL	8		25	1.00	200
CONTROLLER	1		100	1.00	100
TOTAL =					615.2
ENERGY COSTS TO: CITY OF AURORA					
44 E. DOWNER PLACE					
AURORA, ILLINOIS 60507-2067					
ENERGY SUPPLY CONTACT: MARK SCHERIBEL					
PHONE: (630) 723-2128					
COMPANY: COMMONWEALTH EDISON					

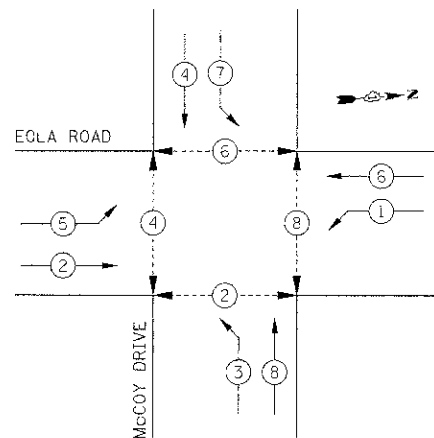


EMERGENCY VEHICLE PREEMPTION SEQUENCE

PROPOSED EMERGENCY VEHICLE PREEMPTORS		
PROPOSED EMERGENCY VEHICLE PREEMPTORS	3	4
MOVEMENT	←→	↑↓

CONTROLLER SEQUENCE LEGEND	
←*	DUAL ENTRY PHASE
←*	SINGLE ENTRY PHASE
←*	OVERLAP
*	NUMBER REFERRING TO ASSOCIATED PHASE
←*	PEDESTRIAN PHASE

CONTROLLER SEQUENCE



PHASE DESIGNATION DIAGRAM

THE TRAFFIC SIGNAL CONTROL EQUIPMENT FOR THIS PROJECT SHALL BE "ECONOLITE" TO MATCH THE EXISTING ADJACENT SYSTEM.

THE EMERGENCY VEHICLE PREEMPTION EQUIPMENT FOR THIS PROJECT SHALL BE OPTICOM AS REQUIRED BY THE CITY OF AURORA. LIGHT DETECTOR AMPLIFIERS SHALL BE OPTICOM MODEL 764 MULTIMODE PHASE SELECTORS.

THE END OF THE TRACER CABLE SHALL BE CONTINUOUS AND EXTEND INTO THE CONTROLLER CABINET.