

STATE OF ILLINOIS  
DEPARTMENT OF TRANSPORTATION  
DIVISION OF HIGHWAYS

F. A. I. I. REC.	SECTION	COUNTY	TOTAL SHEETS	SHEET NO.
1066	13-00063-00-RS	COOK	10	1
STA. 10+00		TO STA. 124+00		
FED. ROAD DIST. NO.		ILLINOIS	FED. AID PROJECT M-4003(115)	

CONTRACT #63801

# PLANS FOR PROPOSED FEDERAL AID HIGHWAY

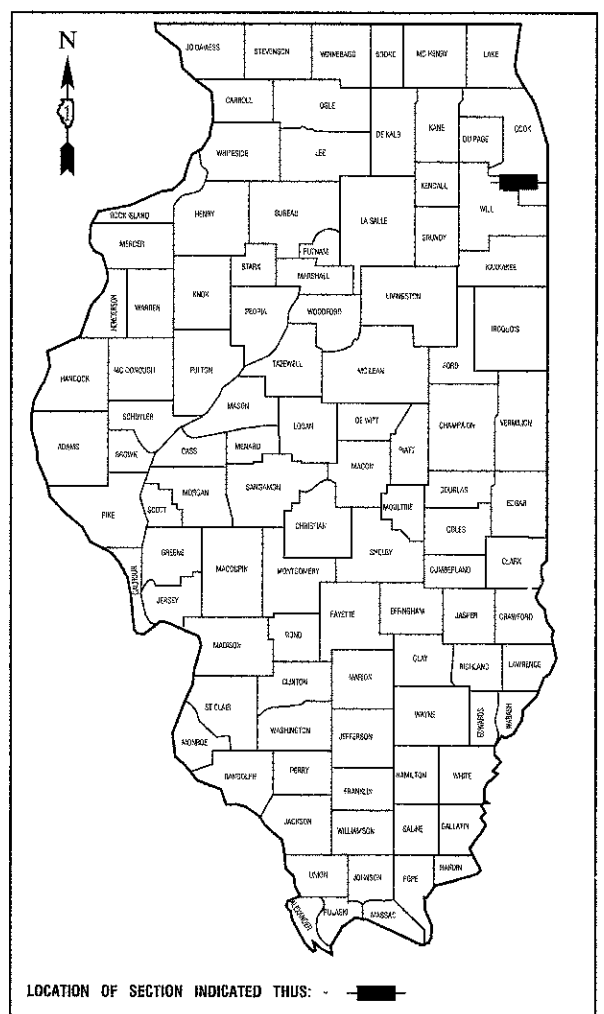
### INDEX OF SHEETS

1. COVER SHEET
2. SUMMARY OF QUANTITIES & GENERAL NOTES
3. TYPICAL CROSS SECTIONS
- 4.-5. PAVEMENT PLAN
- 6.-7. STRIPING PLAN
- 8.-10. IDOT CONSTRUCTION DETAILS

### HIGHWAY STANDARDS

- |           |  |
|-----------|--|
| 000001-06 | STANDARD SYMBOLS, ABBREVIATIONS AND PATTERNS                   |
| 424001-07 | PERPENDICULAR CURB RAMPS                                       |
| 424011-01 | CORNER PARALLEL CURB RAMPS                                     |
| 424016-01 | MID BLOCK CURB RAMPS   |
| 424021-01 | DEPRESSED CORNER   |
| 442201-03 | CLASS C AND D PATCHES  |
| 606001-05 | CONCRETE CURB TYPE B AND COMBINATION CONCRETE CURB AND GUTTER  |
| 701501-06 | URBAN LANE CLOSURE, 2L, 2W, UNDIVIDED                          |
| 701801-05 | LANE CLOSURE, MULTILANE 1W OR 2W CROSSWALK OR SIDEWALK CLOSURE |
| 701901-02 | TRAFFIC CONTROL DEVICES  |
| 720001-01 | SIGN PANEL MOUNTING DETAILS                                    |
| 720006-03 | SIGN PANEL ERECTION DETAILS                                    |
| 729001-01 | APPLICATIONS OF TYPE A & B METAL POSTS (FOR SIGNS & MARKERS)   |
| 780001-03 | TYPICAL PAVEMENT MARKINGS                                      |

FAU 1066 (DEPOT AVENUE & 110TH STREET)  
FAU 1581 (111TH STREET) TO FAU 2955 (OAK PARK AVENUE)  
RESURFACING  
PROJECT NO.: M-4003 (115)  
SECTION NO.: 13-00063-00-RS  
VILLAGE of WORTH  
COOK COUNTY  
JOB NO.: C-91-115-13

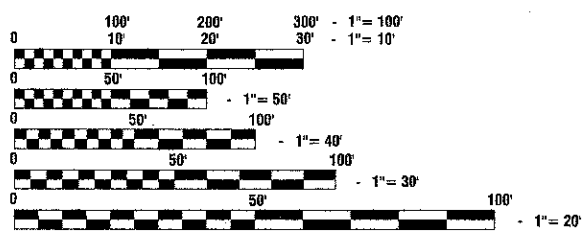


DEPOT AVENUE / 110TH STREET

2010 ADT -	3,100
2030 ADT -	3,100
POSTED SPEED LIMIT -	25 mph
DESIGN SPEED LIMIT -	25 mph
STREET CLASSIFICATION -	URBAN COLLECTOR

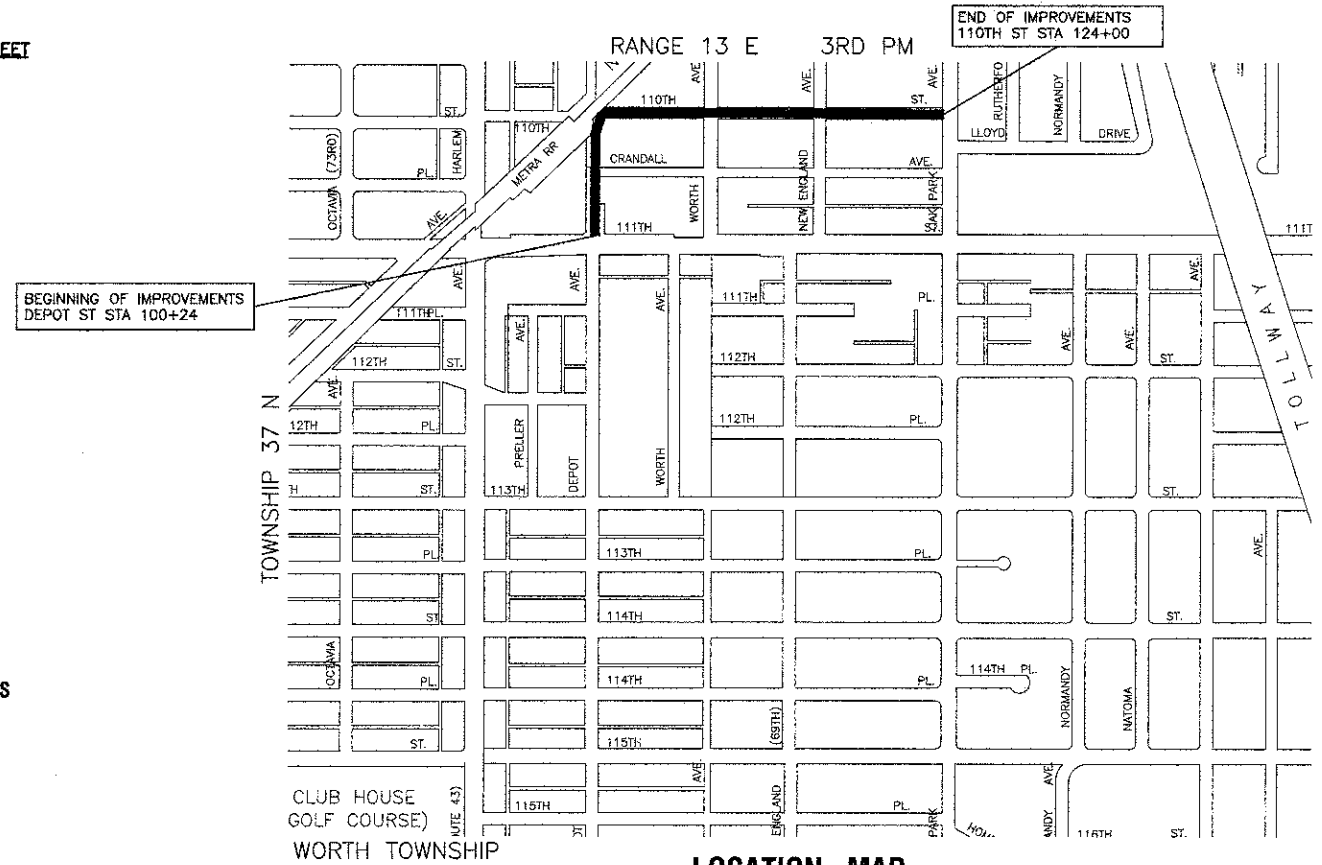
SCALES

PLAN -	1"=50'
PROFILE HORIZ. -	1"=50'
PROFILE VERT. -	1"=5'
CROSS SECTIONS -	1"=10'



FULL SIZE PLANS HAVE BEEN PREPARED USING STANDARD ENGINEERING SCALES, REDUCED SIZED PLANS WILL NOT CONFORM TO STANDARD SCALES, IN MAKING MEASUREMENTS ON REDUCED PLANS, THE ABOVE SCALES MAY BE USED.

J. U. L. I. E.  
JOINT UTILITY LOCATION INFORMATION FOR EXCAVATION  
1-800-892-0123 or 811



LOCATION MAP

GROSS LENGTH=2,380 FEET=0.45 MILES  
NET LENGTH=2,380 FEET=0.45 MILES

STATE OF ILLINOIS DEPARTMENT OF TRANSPORTATION  
DIVISION OF HIGHWAYS

Approved: Randy Kalka 1-31-13  
President, Village of Worth

Passed: FEBRUARY 28, 2013  
C. J. Holt  
District 1 Engineer of Local Roads & Streets

Released for Bid Based on Limited Review: February 27, 2013  
John Fortman  
Deputy Director of Highways, Region 1 Engineer

PRINTED BY THE AUTHORITY OF  
THE STATE OF ILLINOIS

PREPARED BY OR UNDER THE  
DIRECT SUPERVISION OF:

Michael Spolar  
2/1/2013



LICENSE EXPIRES: 11/30/13

PROGRAM AND OFFICE ENGINEER: CHARLES F. RIDDLE, P.E. (847)-705-4406, SCHAUMBURG, IL  
CONSULTANTS: ROBINSON ENGINEERING, LTD. 708-331-6700

CONTRACT NO. 63801