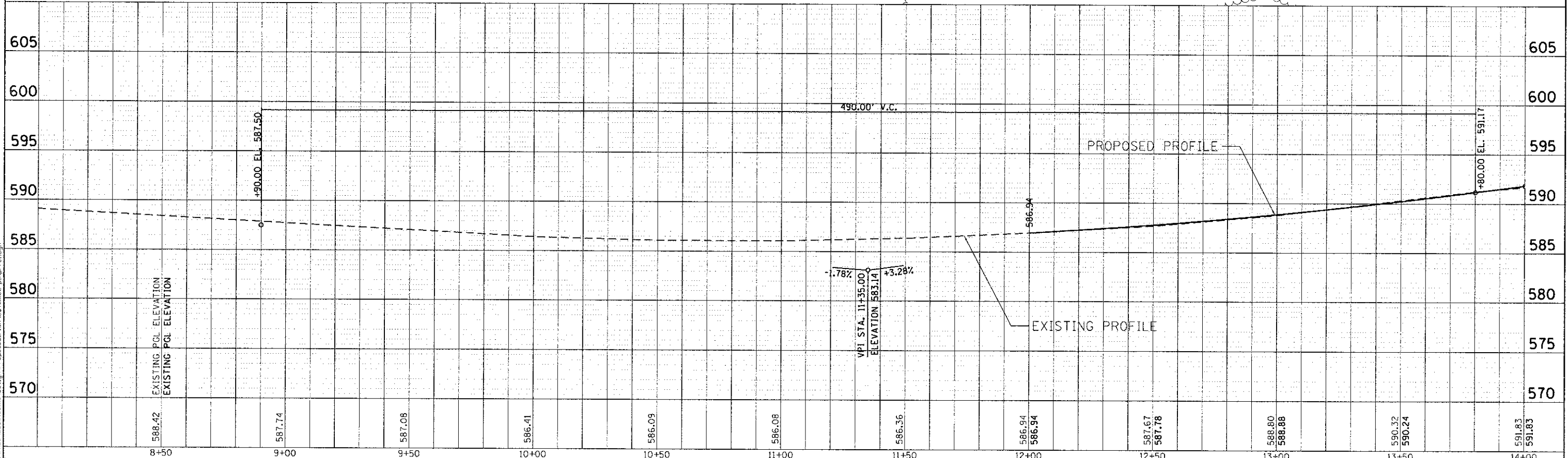


PROPOSED LEGEND

- ① HOT-MIX ASPHALT PAVEMENT (FULL DEPTH) 13 3/4"
- ② AGGREGATE SUBGRADE IMPROVEMENT, 12"
- ③ HOT-MIX ASPHALT SHOULDERS, 6"
- ④ BRIDGE APPROACH PAVEMENT CONNECTOR (FLEXIBLE)
- ⑤ STEEL PLATE BEAM GUARDRAIL, TYPE A, 9 FOOT POSTS
- ⑥ TRAFFIC BARRIER TERMINAL, TYPE 1 (SPECIAL) TANGENT
- ⑦ TRAFFIC BARRIER TERMINAL, TYPE 6
- ⑧ COMBINATION CURB AND GUTTER TYPE B-6.24
- ⑨ AGGREGATE SHOULDERS, TYPE B 6"
- DEPRESSED CURB
- ADJ INLET OR MANHOLE TO BE ADJUSTED



	Ciorba Group, Inc. CONSULTING ENGINEERS 5507 North Cumberland Avenue, Suite 402 Chicago, Illinois 60656 Tel. 773.775.4009 Fax 773.775.4014	USER NAME = jknelson DESIGNED - JMK DRAWN - JMK CHECKED - MJL DATE - 1/29/2013	REVISED - REVISED - REVISED - REVISED -	STATE OF ILLINOIS DEPARTMENT OF TRANSPORTATION	FAU 298 (BLACK ROAD) OVER THE DUPAGE RIVER PROPOSED ROADWAY PLAN AND PROFILE	C.H. RTE. 298 SECTION 04-00069-18-BR COUNTY WILL TOTAL SHEETS 51 SHEET NO. 13	CONTRACT NO. 63803 ILLINOIS FED. AID PROJECT
	SCALE: SHEET NO. OF SHEETS STA. TO STA.						