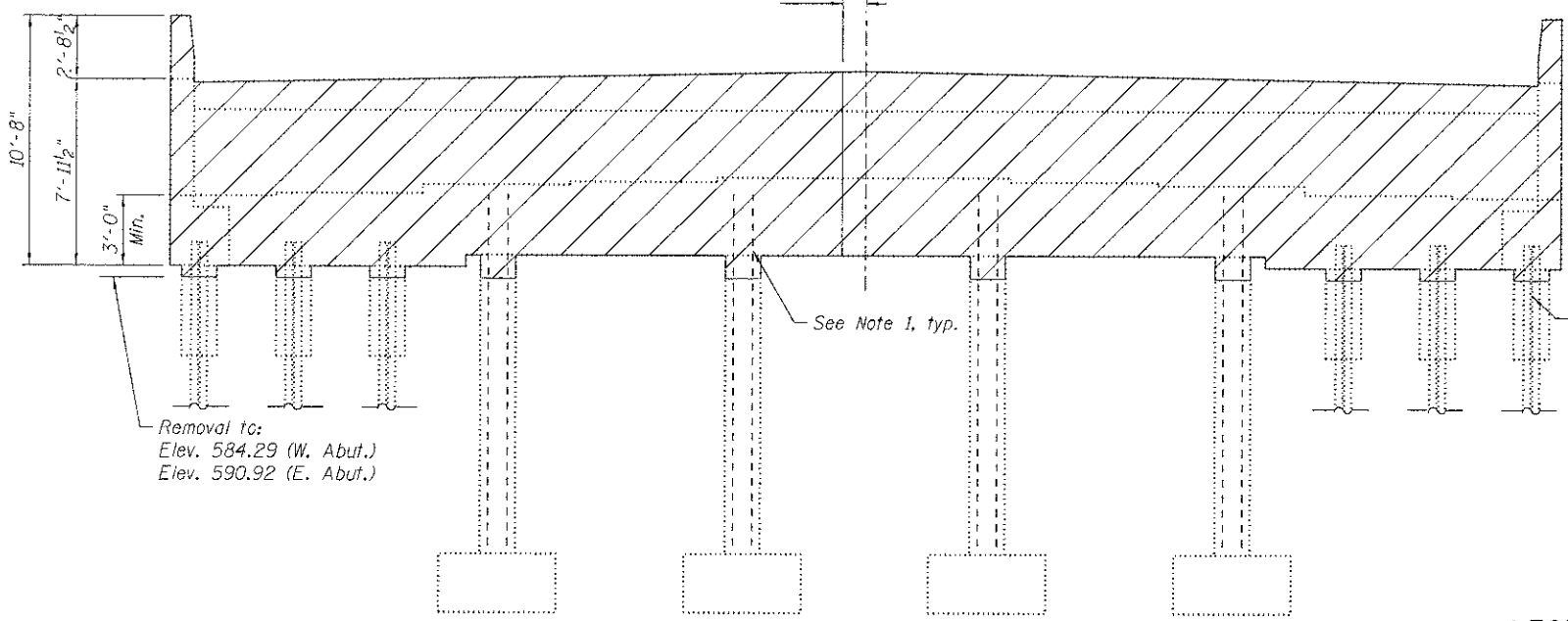
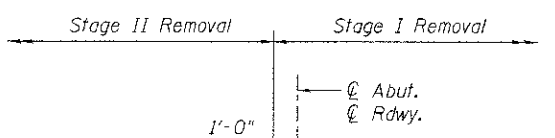
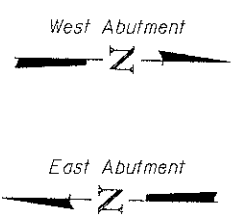
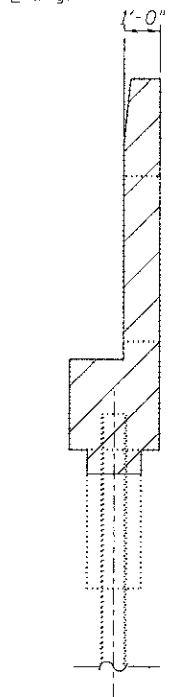


PLAN
(West Abutment shown
East Abutment similar)

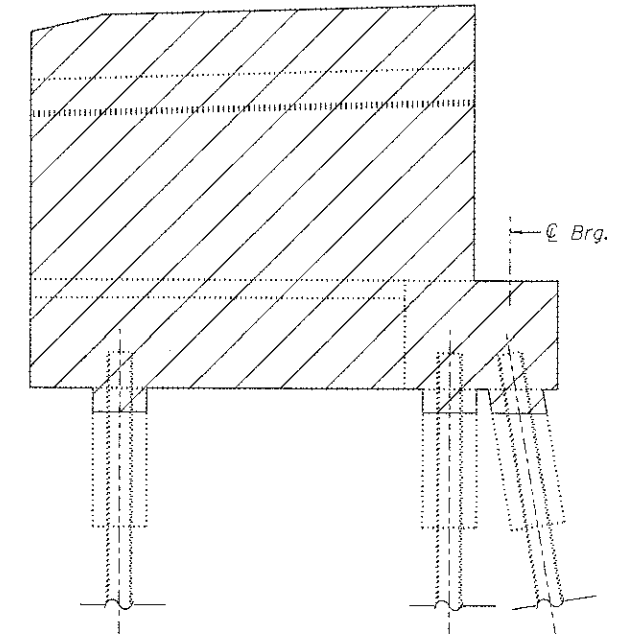


ELEVATION
(West Abutment shown
East Abutment similar)

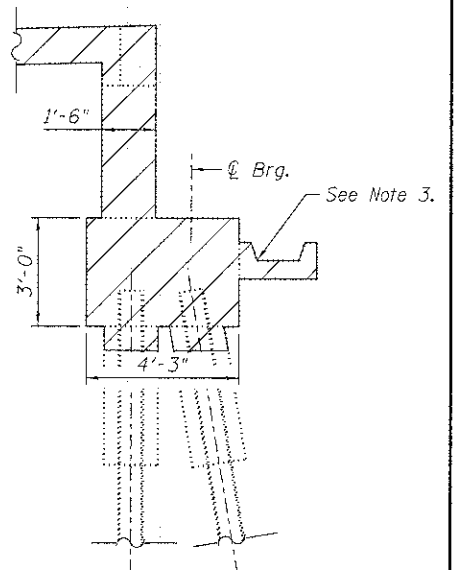
Removal to:
Elev. 584.29 (W. Abut.)
Elev. 590.92 (E. Abut.)



SECTION A-A



VIEW B-B



SECTION C-C

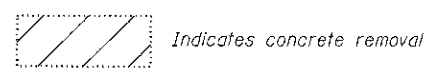
BILL OF MATERIAL

ITEM	UNIT	TOTAL
Concrete Removal	Cu. Yd.	85.6

NOTES:

- Existing reinforcement shall be cleaned and incorporated into the new construction. Cost included with "Concrete Removal".
- Any reinforcement bars that are damaged during concrete removal operations shall be repaired or replaced using an approved bar splice or anchorage system. Cost included with "Concrete Removal".
- Existing concrete gutter to be removed during abutment removal. Cost included with "Concrete Removal".
- Full length of existing piles to remain.

LEGEND:



M:\PROJ\090234\08-08\Design\Structural\CAD\099-3031_0002.dwg 05 Removal.dgn

CG Clorin Group, Inc.
CONSULTING ENGINEERS
250 West 25th Street, Suite 200
Chicago, IL 60616
Tel: 773-235-8000
Fax: 773-235-8001
Email: info@clorin.com

USER NAME: rdenley	DESIGNED: MHT	REVISIONS:
PLLOT SCALE: 4.000000 / in.	CHECKED: SMY	REVISIONS:
PLLOT DATE: 1/26/2013	DRAWN: SRG	REVISIONS:
	CHECKED: BWS	REVISIONS:

**STATE OF ILLINOIS
DEPARTMENT OF TRANSPORTATION**

**REMOVAL DETAILS
STRUCTURE NO. 099-3031**
SHEET NO. S-5 OF S-24 SHEETS

F.A.U. RTE.	SECTION	COUNTY	TOTAL SHEETS	SHEET NO.
298	04-00069-18-BR	WILL	51	26
CONTRACT NO. 63803				
ILLINOIS FED. AID PROJECT				