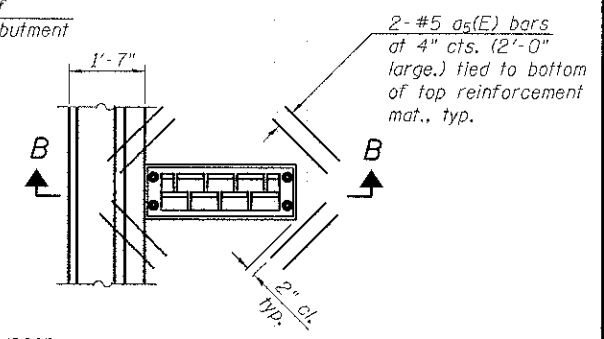


**PLAN**

\* Scupper locations to be adjusted in field to freefall into existing drainage structure

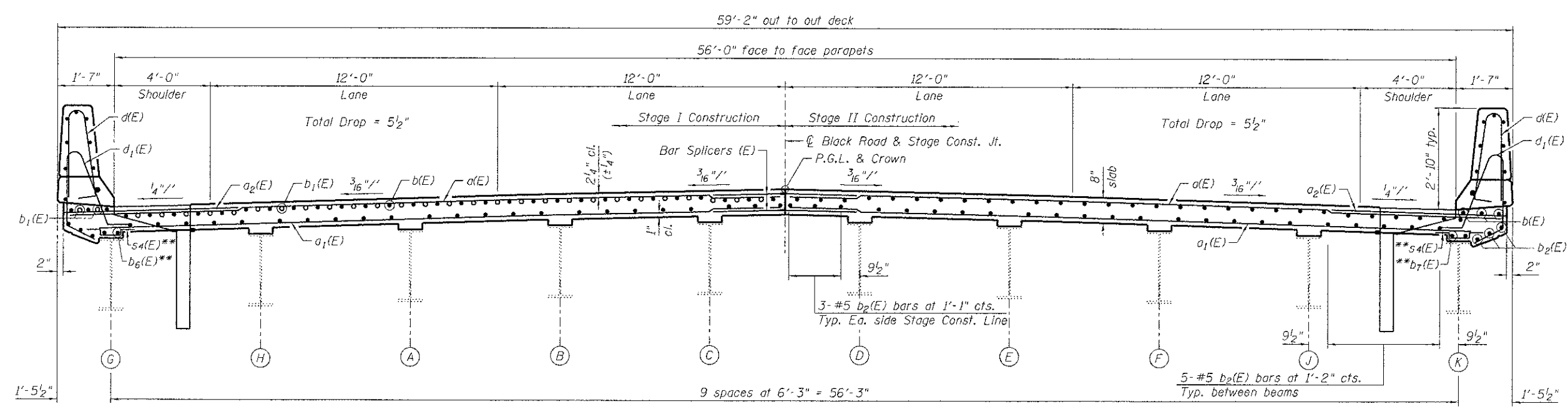
**MIN. BAR LAP**

- #4 bars = 2'-7"
- #5 bars = 3'-3"
- #6 bars = 3'-10"

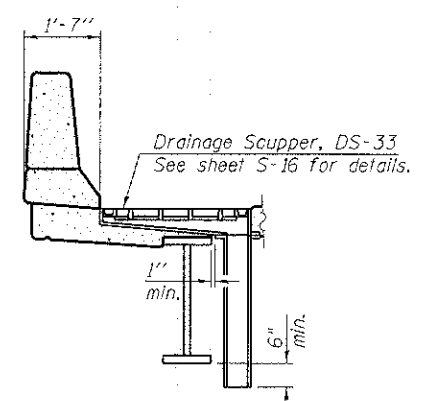


**DETAIL 1**

Note: Cut longitudinal reinforcement to clear drainage scuppers.



**CROSS SECTION**  
(Looking East)



**SECTION B-B**

See Note 6

**NOTES:**

1. See sheet S-12 for superstructure details and Bill of Material.
2. Bars indicated thus 32x4-#5 etc. indicates 32 lines of bars with 4 lengths per line.
3. See sheet S-12 for parapet reinforcement.
4. See sheet S-13 for Section A-A.
5. See sheet S-24 for Bar Splicer details.
6. 6" to 12" of clearance should be maintained between the scupper downspout and the existing inlets at the West Abutment.

\*\* Bars to be used when the top of studs is less than 2" above the bottom of deck slab, to be determined by the Engineer in field. Estimated bar quantities are shown on sheet S-12 in Bill of Material.

M:\PROJ\00023406\00\Design\Structural\CAD\099-3031\00023408 11 Deck Plan & Elev.dgn  
 Ciorba Group, Inc.  
 CONSULTING ENGINEERS  
 200 West Superior Street, Suite 200  
 Chicago, IL 60610  
 Tel: 312.375.4000  
 Fax: 312.375.4001  
 www.ciorbainc.com

USER NAME = rdenley	DESIGNED - MHT	REvised -
PLOT SCALE = 1/2" = 1'-0"	CHECKED - SMY	REvised -
PLOT DATE = 1/28/2013	DRAWN - SRG	REvised -
	CHECKED - BWS	REvised -

**STATE OF ILLINOIS**  
**DEPARTMENT OF TRANSPORTATION**

**SUPERSTRUCTURE PLAN & ELEVATION**  
**STRUCTURE NO. 099-3031**

SHEET NO. S-11 OF S-24 SHEETS

F.A.U. RTE.	SECTION	COUNTY	TOTAL SHEETS	SHEET NO.
298	04-00069-18-BR	WILL	51	32
CONTRACT NO. 63803			ILLINOIS FED. AID PROJECT	