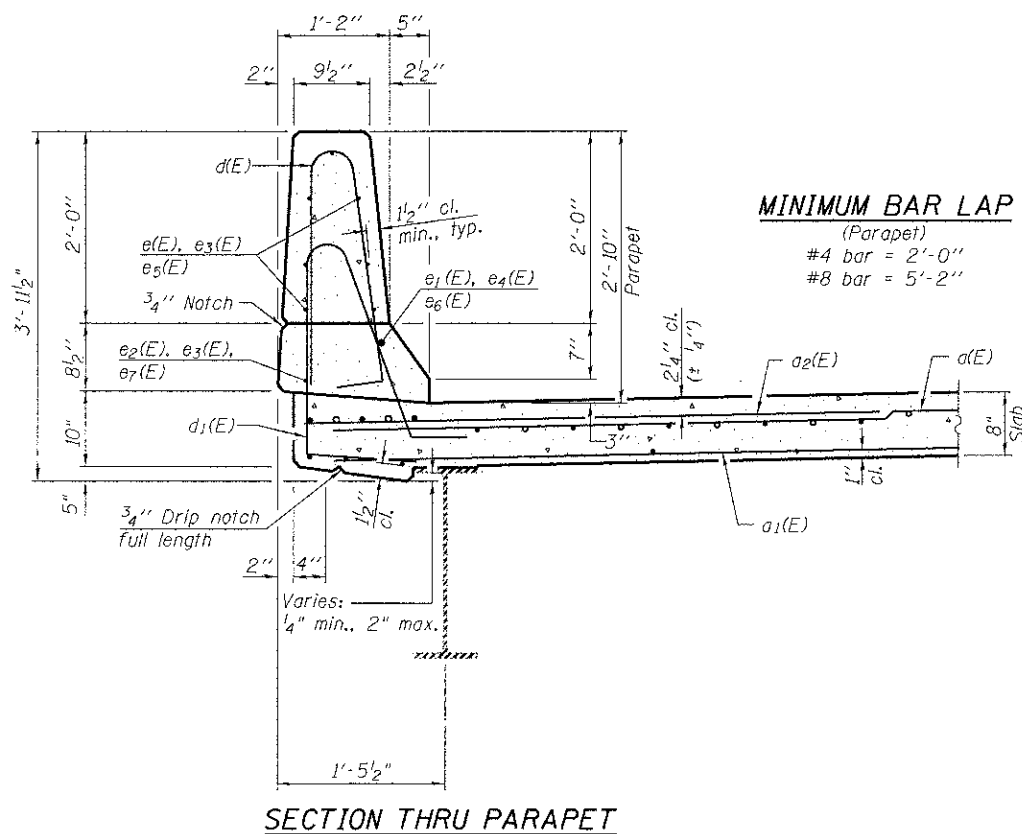


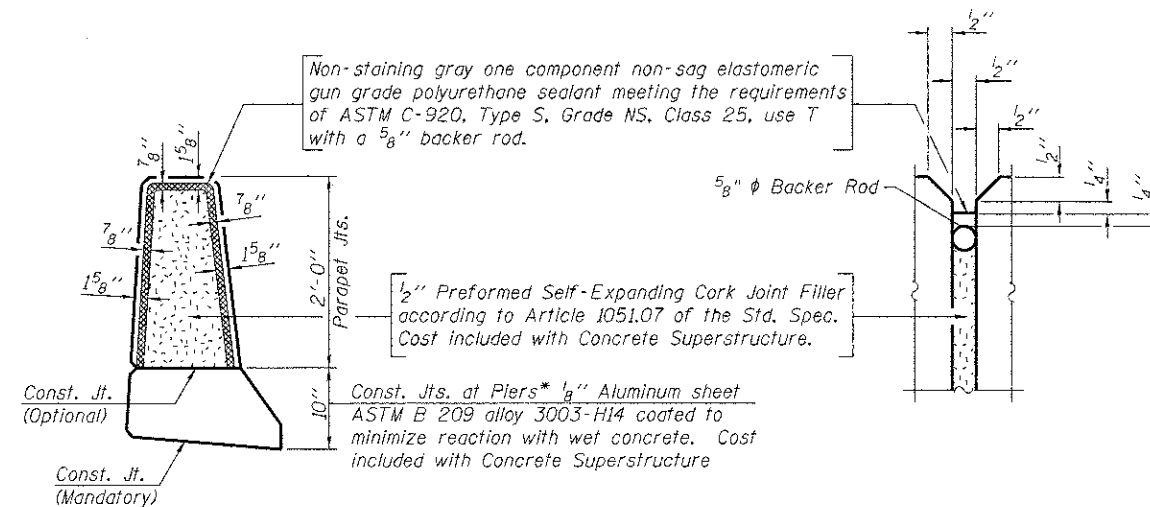
INSIDE ELEVATION OF PARAPET

SUPERSTRUCTURE BILL OF MATERIAL

Bar	No.	Size	Length	Shape
a(E)	696	# 5	29'-3"	—
a ₁ (E)	626	# 5	29'-3"	—
a ₂ (E)	350	# 6	6'-6"	—
a ₅ (E)	64	# 5	2'-0"	—
b(E)	640	# 5	29'-0"	—
b ₁ (E)	180	# 6	39'-6"	—
b ₂ (E)	572	# 5	26'-8"	—
b ₆ (E)	2	# 4	3'-6"	—
b ₇ (E)	5	# 4	21'-7"	—
d(E)	570	# 5	5'-7"	⌋
d ₁ (E)	570	# 5	6'-3"	⌋
e(E)	84	# 4	16'-2"	—
e ₁ (E)	8	# 8	27'-2"	—
e ₂ (E)	8	# 4	25'-7"	—
e ₃ (E)	96	# 4	8'-11"	—
e ₄ (E)	12	# 8	8'-11"	—
e ₅ (E)	84	# 4	17'-4"	—
e ₆ (E)	8	# 8	28'-11"	—
e ₇ (E)	8	# 4	27'-4"	—
m(E)	32	# 6	29'-3"	—
m ₁ (E)	60	# 5	4'-0"	—
m ₂ (E)	72	# 6	5'-11"	—
m ₃ (E)	16	# 6	1'-2"	—
s(E)	116	# 5	8'-9"	⌋
s ₁ (E)	116	# 4	9'-9"	⌋
s ₄ (E)	66	# 4	2'-10"	⌋
u(E)	124	# 4	5'-10"	⌋
v(E)	124	# 5	3'-9"	⌋
Reinforcement Bars, Epoxy Coated	Pound		106,410	
Concrete Superstructure	Cu. Yd.		519.1	
Bridge Deck Grooving	Sq. Yd.		1,562	
Protective Coat	Sq. Yd.		1,838	



SECTION THRU PARAPET



PARAPET JOINT DETAILS

* And at semi-integral abutments.

NOTES:

- Bars indicated thus 1x2-#5 etc. indicates 1 line of bars with 2 lengths per line.
- See sheet S-13 for d(E) and d₁(E) bar bending diagram.

N:\PRD\00023406\00\Design\Structure\099-3031\0003406 12 Superstructure Details.dgn



USER NAME = rdenley	DESIGNED - MHT	REVISED -
	CHECKED - SMY	REVISED -
	DRAWN - SRC	REVISED -
	CHECKED - BWS	REVISED -
PLOT SCALE = 9/16" = 1' / in.		
PLOT DATE = 1/28/2013		

STATE OF ILLINOIS
DEPARTMENT OF TRANSPORTATION

SUPERSTRUCTURE DETAILS
STRUCTURE NO. 099-3031

SHEET NO. 5-12 OF 5-24 SHEETS

F.A.U. RTE.	SECTION	COUNTY	TOTAL SHEETS	SHEET NO.
298	04-00069-18-BR	WILL	51	33
CONTRACT NO. 63803			ILLINOIS FED. AID PROJECT	