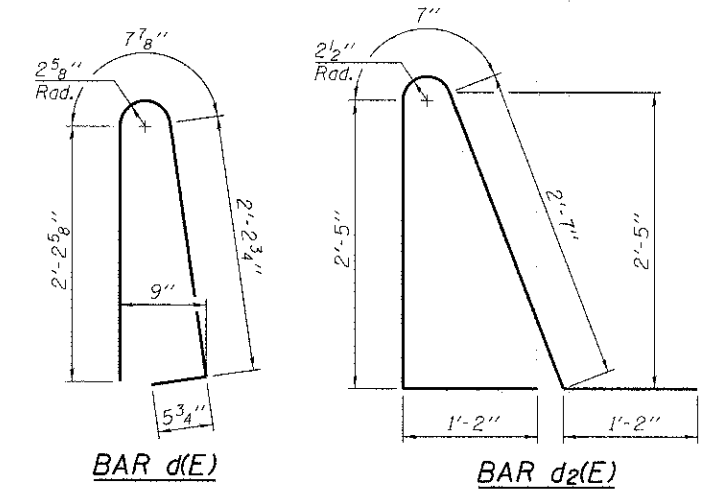
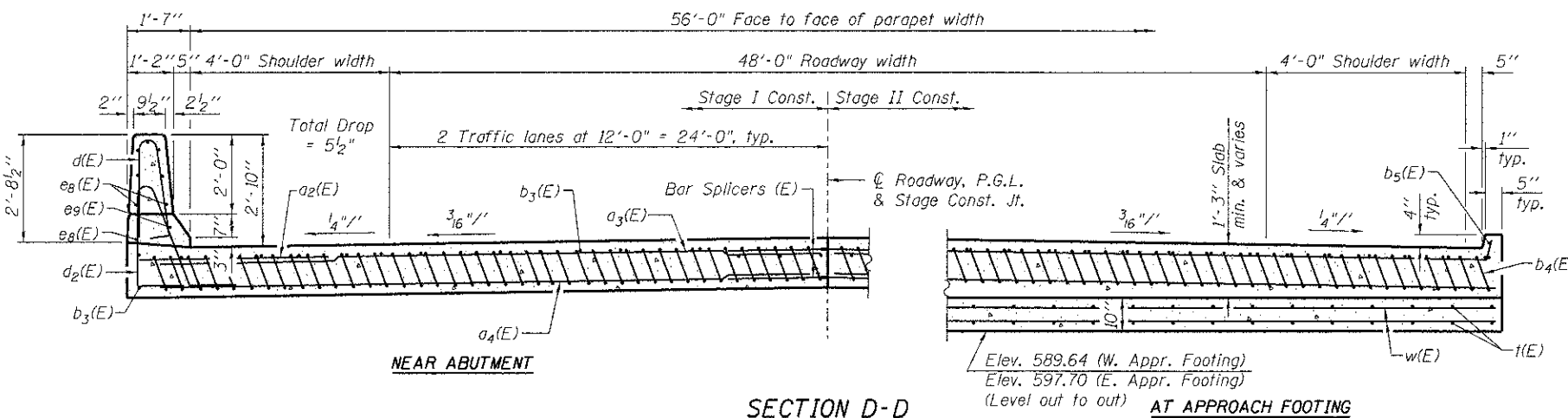


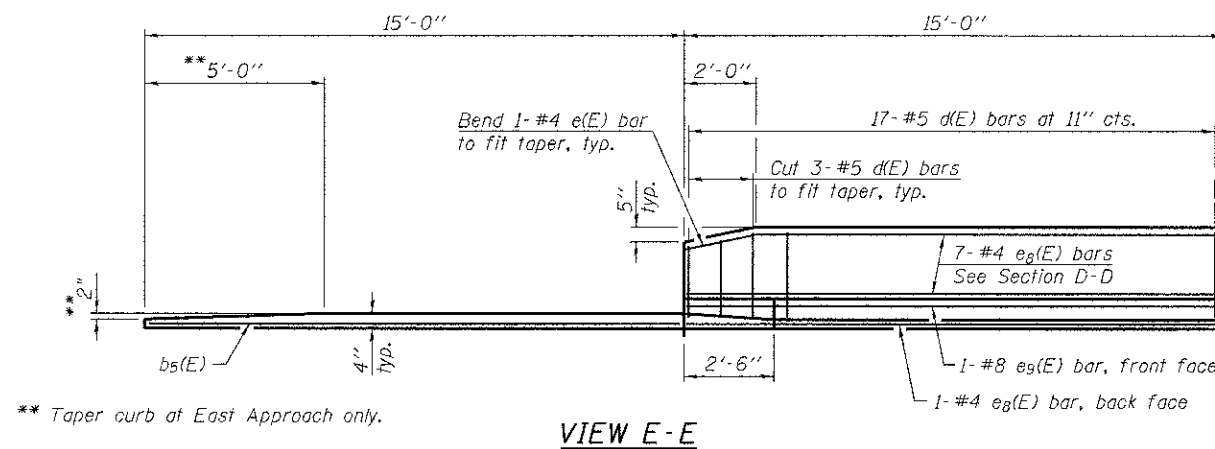
Notes:
 See sheet S-14 for Detail A and View B-B.
 Approach slab and parapet concrete shall be paid for as Concrete Superstructure.
 Approach footing concrete shall be paid for as Concrete Structures.
 Reinforcement shall be paid for as Reinforcement Bars, Epoxy Coated.
 For v(E) bar details, see sheet S-13.
 The approach footing maximum applied service bearing pressure (Qmax) = 2.0 ksf.
 Cost of excavation for approach footing included with Concrete Structures.
 For Porous Granular Embankment (Special) and drainage treatment details, see sheet S-2.
 For additional parapet details, see sheet S-12.



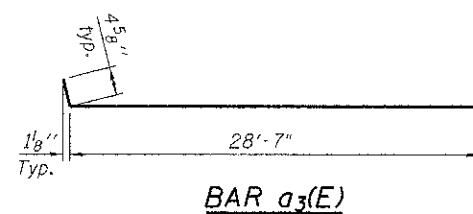
* Tilt #9 b4(E) bars as required to maintain clearance.
 *** Cost included with Concrete Superstructure.



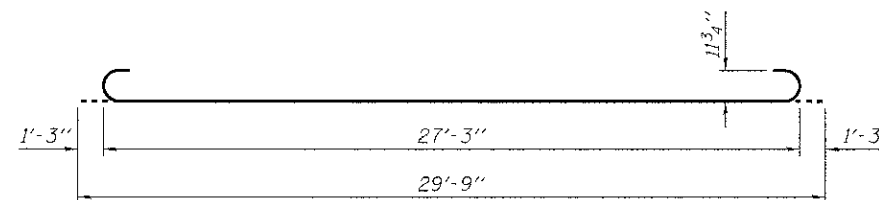
SECTION D-D
 (See Plan for dimensions not shown)



VIEW E-E



BAR a3(E)



BAR b4(E)

TWO APPROACHES
 BILL OF MATERIAL

Bar	No.	Size	Length	Shape
a2(E)	48	# 6	6'-6"	—
a3(E)	100	# 4	29'-0"	—
a4(E)	184	# 5	28'-7"	—
b3(E)	100	# 4	29'-8"	—
b4(E)	268	# 9	29'-9"	—
b5(E)	4	# 4	14'-8"	—
d(E)	68	# 5	5'-7"	▲
d2(E)	68	# 5	7'-11"	▲
e8(E)	32	# 4	14'-8"	—
e9(E)	4	# 8	14'-8"	—
t(E)	240	# 4	9'-8"	—
w(E)	160	# 5	28'-7"	—
Concrete Superstructure		Cu. Yd.	177.4	
Concrete Structures		Cu. Yd.	35.8	
Bridge Deck Grooving		Sq. Yd.	364	
Protective Coat		Sq. Yd.	407	
Reinforcement Bars, Epoxy Coated		Pound	44,770	

N:\PROJ\0925498_00\Design\Structural\CAD\099-3031_00023498_15_Approach_Slab_Details_2.dgn



USER NAME = rdenley	DESIGNED - MHT	REVISED -
PLOT SCALE = 0.1/0.000 1" = 10'	CHECKED - SMY	REVISED -
PLOT DATE = 1/28/2013	DRAWN - SRG	REVISED -
	CHECKED - BWS	REVISED -

STATE OF ILLINOIS
 DEPARTMENT OF TRANSPORTATION

APPROACH SLAB DETAILS - 2
 STRUCTURE NO. 099-3031

SHEET NO. S-15 OF S-24 SHEETS

F.A.J. RTE. 298	SECTION 04-00669-18-BR	COUNTY WILL	TOTAL SHEETS 51	SHEET NO. 36
CONTRACT NO. 63803				ILLINOIS FED. AID PROJECT