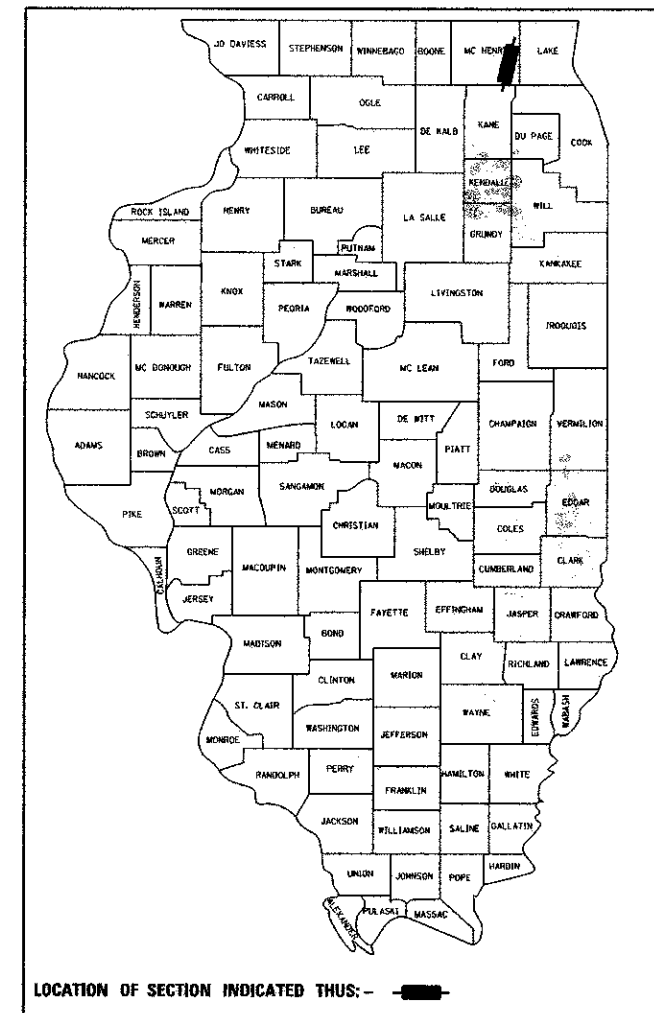


STATE OF ILLINOIS
DEPARTMENT OF TRANSPORTATION
DIVISION OF HIGHWAYS

**PLANS FOR PROPOSED
FEDERAL AID HIGHWAY**

F.A.U. ROUTE 120 (MCHENRY AVE)
JAMES R RAKOW ROAD TO US ROUTE 14
RESURFACING, BICYCLE/PEDESTRIAN FACILITIES,
DRAINAGE IMPROVEMENT
SECTION 11-00115-00-RS
PROJECT NO: M-9003(886)
CITY OF CRYSTAL LAKE
MCHENRY COUNTY
C-91-132-12

F.A.U. RTE.	SECTION	COUNTY	TOTAL SHEETS	SHEET NO.
120	11-00115-00-RS	MCHENRY	62	1
FED. ROAD DIST. NO.	ILLINOIS CONTRACT NO. 63806			



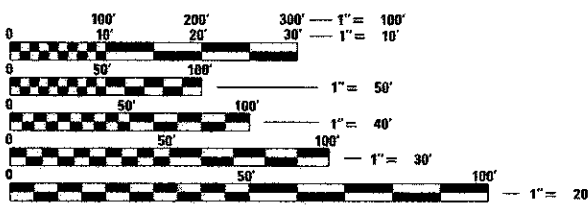
FOR INDEX OF SHEETS, SEE SHEET NO. 2

DESIGN DESIGNATION
MCHENRY AVE
FUNCTIONAL CLASSIFICATION: MINOR ARTERIAL
DESIGN SPEED: 30 MPH
POSTED SPEED: 30 MPH

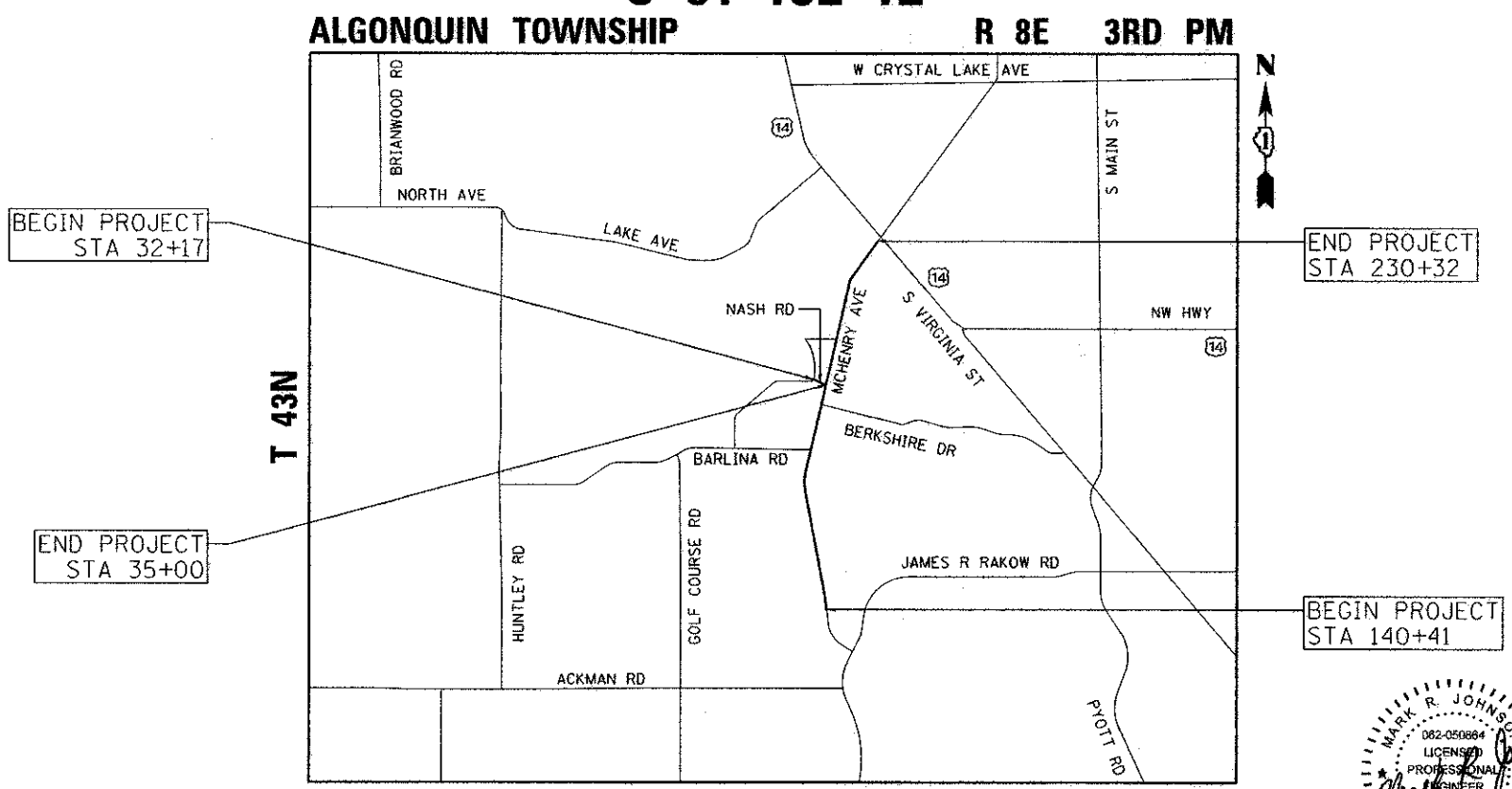
TRAFFIC DATA
MCHENRY AVE
EXISTING ADT: 10,000 (2012)

PROGRAM AND OFFICE ENGINEER: CHARLES F. RIDDLE, P.E. (847) 705-4406 SCHAUMBURG, IL

PROJECT LOCATED IN THE
CITY OF CRYSTAL LAKE



FULL SIZE PLANS HAVE BEEN PREPARED USING STANDARD ENGINEERING SCALES, REDUCED SIZED PLANS WILL NOT CONFORM TO STANDARD SCALES, IN MAKING MEASUREMENTS ON REDUCED PLANS, THE ABOVE SCALES MAY BE USED.



LOCATION MAP

GROSS AND NET LENGTH = 9,274 FT = 1.76 MI

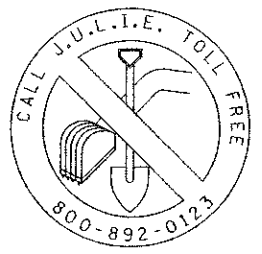
APPROVED 1-17-2013 DATE
Chris D. Monardo
CITY OF CRYSTAL LAKE, CITY ENGINEER

STATE OF ILLINOIS
DEPARTMENT OF TRANSPORTATION
DIVISION OF HIGHWAYS

PASSED FEBRUARY 25, 2013 DATE
John C. Hart
DISTRICT ENGINEER OF LOCAL ROAD & STREETS

RELEASING FOR BID
BASED ON LIMITED REVIEW February 27, 2013 DATE
John Fortson
DEPUTY DIRECTOR OF HIGHWAYS, REGION 1 ENGINEER

PRINTED BY THE AUTHORITY
OF THE STATE OF ILLINOIS



CONTRACT NO. 63806

J.U.L.I.E.
JOINT UTILITY LOCATION INFORMATION FOR EXCAVATION
1-800-892-0123

Giorba Group, Inc.
DESIGN FIRM
REGISTRATION NUMBER
184-001016
CONSULTING ENGINEERS
SUITE 402, 5507 NORTH CUMBERLAND AVE
CHICAGO, ILLINOIS 60656 ☎ (773) 775-4009
PLANS PREPARED BY: GIORBA GROUP