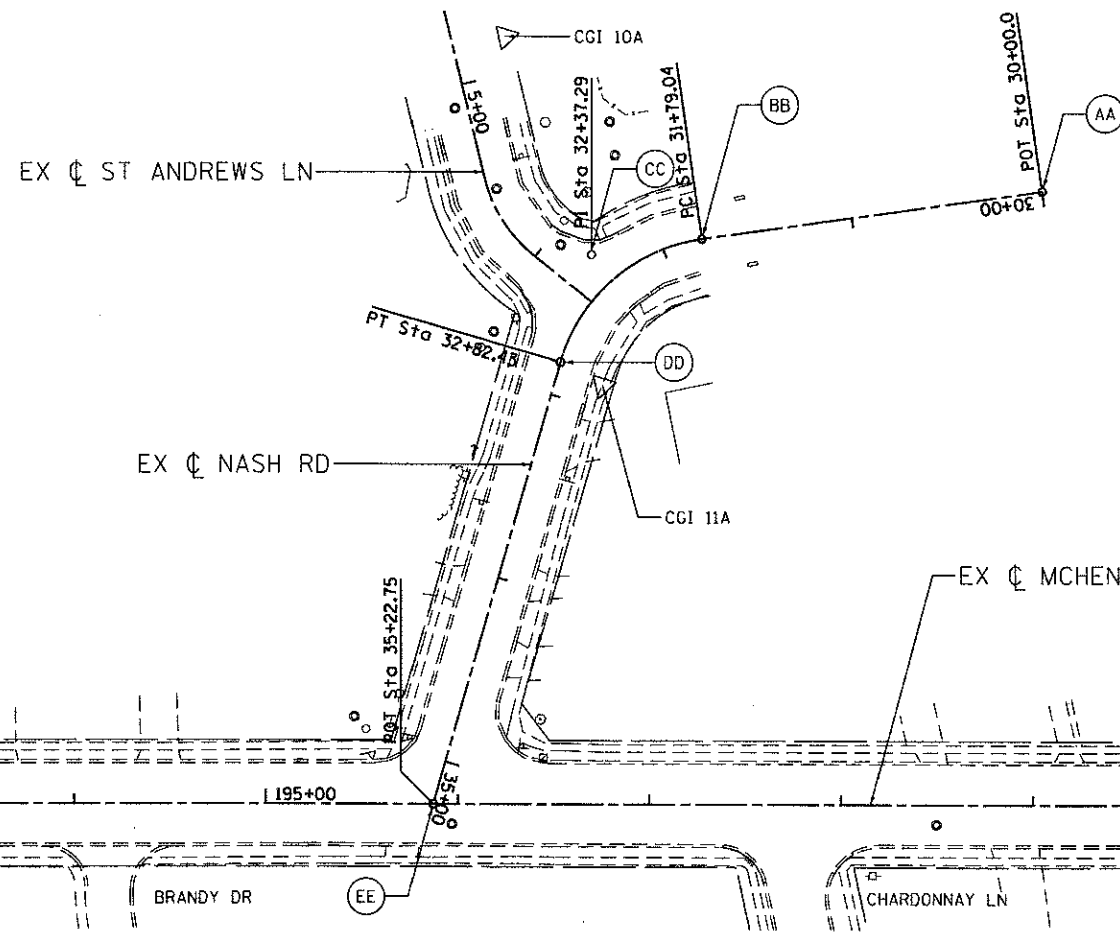
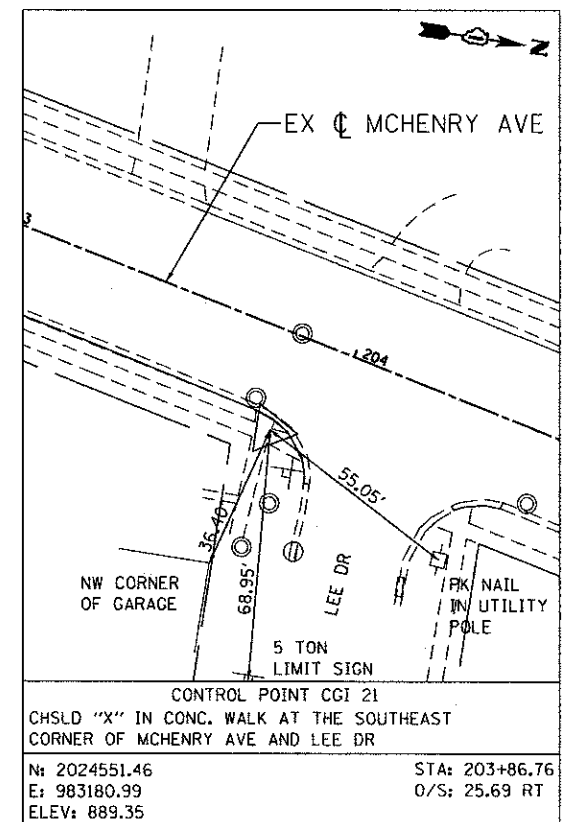
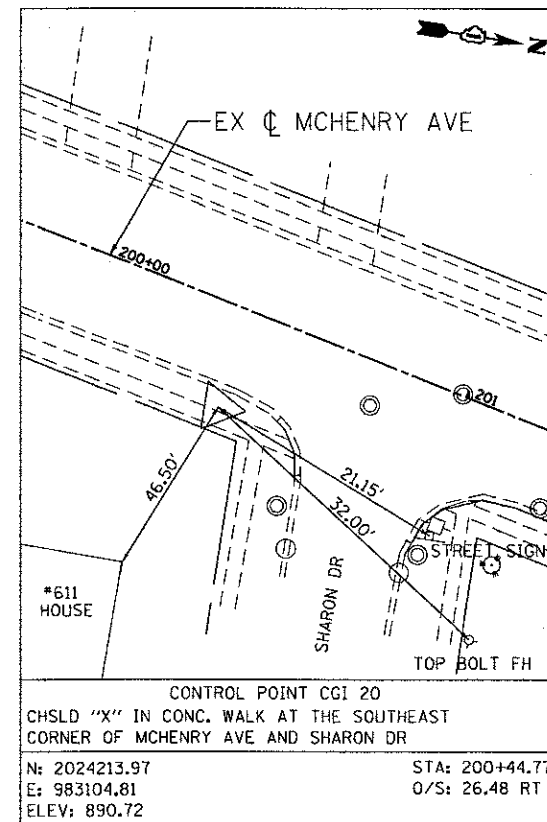
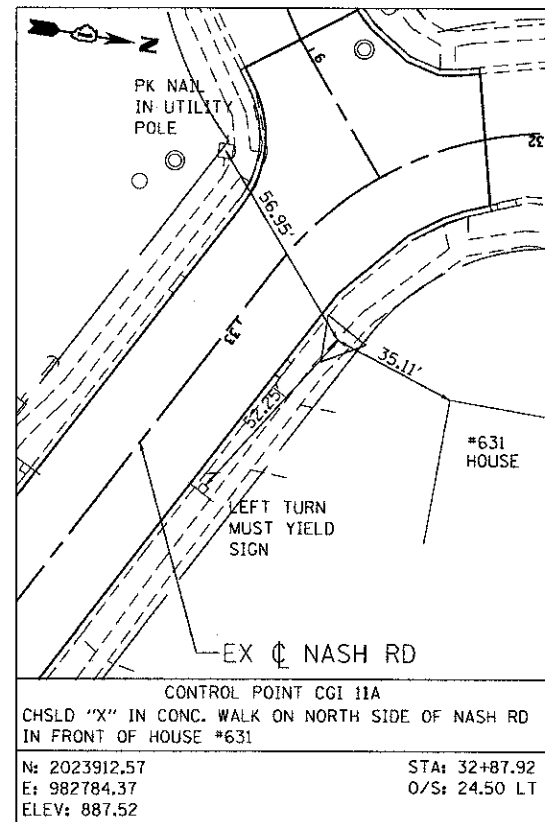
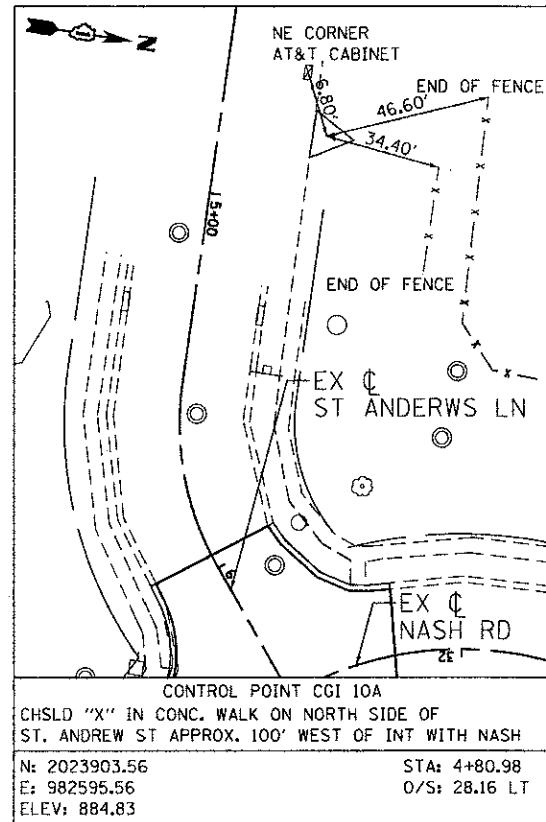


PROP. CURVE NASH-1  
 PI STA. = 32+37.29  
 $\Delta = 65^\circ 48' 58''$  (LT)  
 $D = 63^\circ 39' 43''$   
 $R = 90.00'$   
 $T = 58.24'$   
 $L = 103.38'$   
 $E = 17.20'$   
 $\theta = \dots$   
 $T.R. = \dots$   
 $S.E. RUN = \dots$   
 $P.C. STA. = 31+79.04$   
 $P.T. STA. = 32+82.43$



NUMBER	DESCRIPTION	STATION	NORTHING	EASTING
5	MCHENRY PT STATION	176+75.05	2021913.39	982552.79
6	MCHENRY PI STATION	219+10.34	2026042.59	983494.82

LETTER	DESCRIPTION	STATION	NORTHING	EASTING
AA	NASH POT STATION	30+00.00	2024158.41	982736.29
BB	NASH PC STATION	31+79.04	2023979.97	982721.53
CC	NASH PI STATION	32+30.74	2023921.93	982716.73
DD	NASH PT STATION	32+82.43	2023893.77	982767.71
EE	NASH POT STATION	35+22.75	2023777.59	982978.09



M:\PROJECTS\11-00115-00-RS\11-00115-00-RS-110-Align\110-03.dgn

**ENGINEERING CONSULTANT**  
**Glomba Group, Inc.**  
 CONSULTING ENGINEERS  
 5507 North Central Expressway, Suite 402  
 Chicago, Illinois 60630  
 Tel: 773.778.4000 Fax: 773.778.4014  
 Email: Chicago@glomba.com

USER NAME = ahorn  
 PLOT SCALE = 50.0000' / 1"  
 PLOT DATE = 2/22/2013

DESIGNED - RJR  
 DRAWN - AMH  
 CHECKED - MRJ  
 DATE - FEBRUARY 4, 2013

REVISED -  
 REVISED -  
 REVISED -  
 REVISED -

**STATE OF ILLINOIS  
 DEPARTMENT OF TRANSPORTATION**

**MCHENRY AVENUE  
 ALIGNMENT, TIES, AND BENCHMARKS**

SCALE: 1" = 50' SHEET NO. OF SHEETS STA. TO STA.

F.A.J. RTE.	SECTION	COUNTY	TOTAL SHEETS	SHEET NO.
120	11-00115-00-RS	MCHENRY	62	18

CONTRACT NO. 63806  
 ILLINOIS FED. AID PROJECT