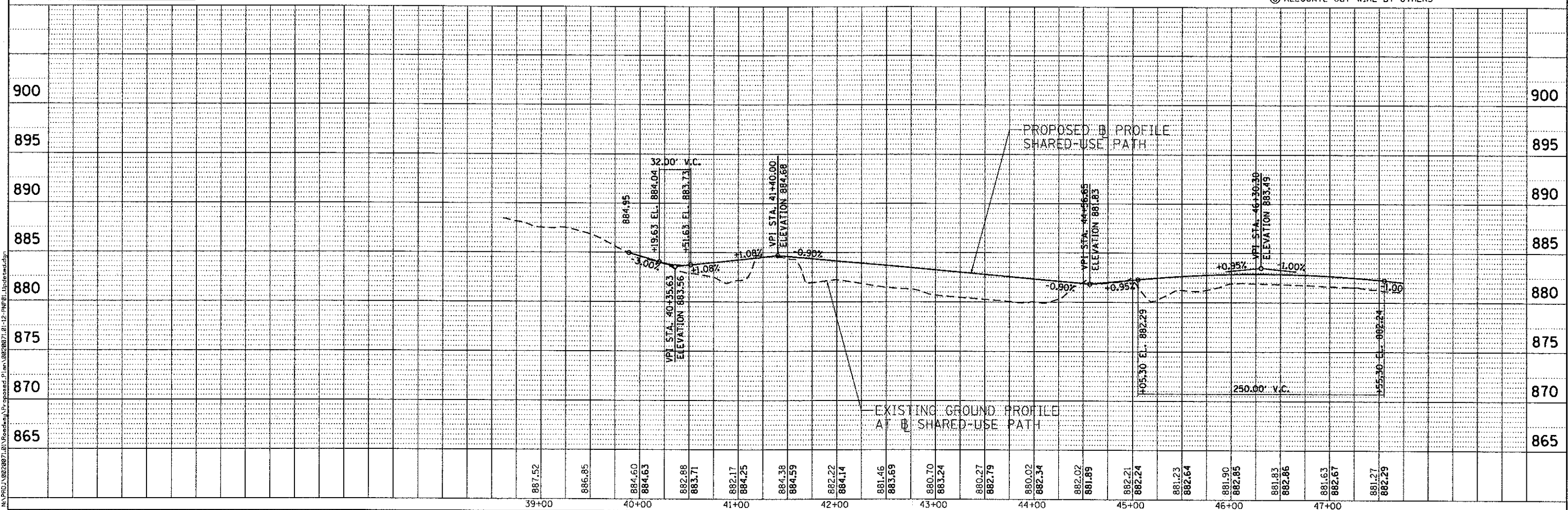


SEE SHEET 30 FOR INTERSECTION CURB RAMP DETAILS

SIDE CURB IS INCIDENTAL TO PCC SIDEWALK, 5"

- NOTES:
- (A) CONCRETE CURB AND GUTTER REMOVAL AND REPLACEMENT
  - (B) HOT-MIX ASPHALT SURFACE COURSE, MIX "D", N50, 2"
  - (C) HOT-MIX ASPHALT BASE COURSE, IL-19.0mm, 6" PE, 8" CE
  - (C) RELOCATE GUY WIRE BY OTHERS



<p>ENGINEERING CONSULTANT</p> <p>USER NAME - eharr</p> <p>DESIGNED - RJR</p> <p>DRAWN - AMH</p> <p>PLLOT SCALE - 50.0000' / 1"</p> <p>PLLOT DATE - 2/22/2013</p>	<p>REVISIONS</p> <p>REVISION NO.</p> <p>DATE</p> <p>REVISION</p>	<p>STATE OF ILLINOIS</p> <p>DEPARTMENT OF TRANSPORTATION</p>		<p>MCHENRY AVENUE</p> <p>PROPOSED PLAN AND PROFILE</p>		<p>F.A.U. RTE.</p> <p>120</p>	<p>SECTION</p> <p>11-00115-00-RS</p>	<p>COUNTY</p> <p>MCHENRY</p>	<p>TOTAL SHEETS</p> <p>62</p>	<p>SHEET NO.</p> <p>21</p>
		<p>SCALE: 1" = 50'</p> <p>SHEET NO. OF SHEETS STA. TO STA.</p>								