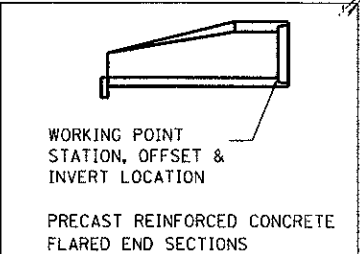
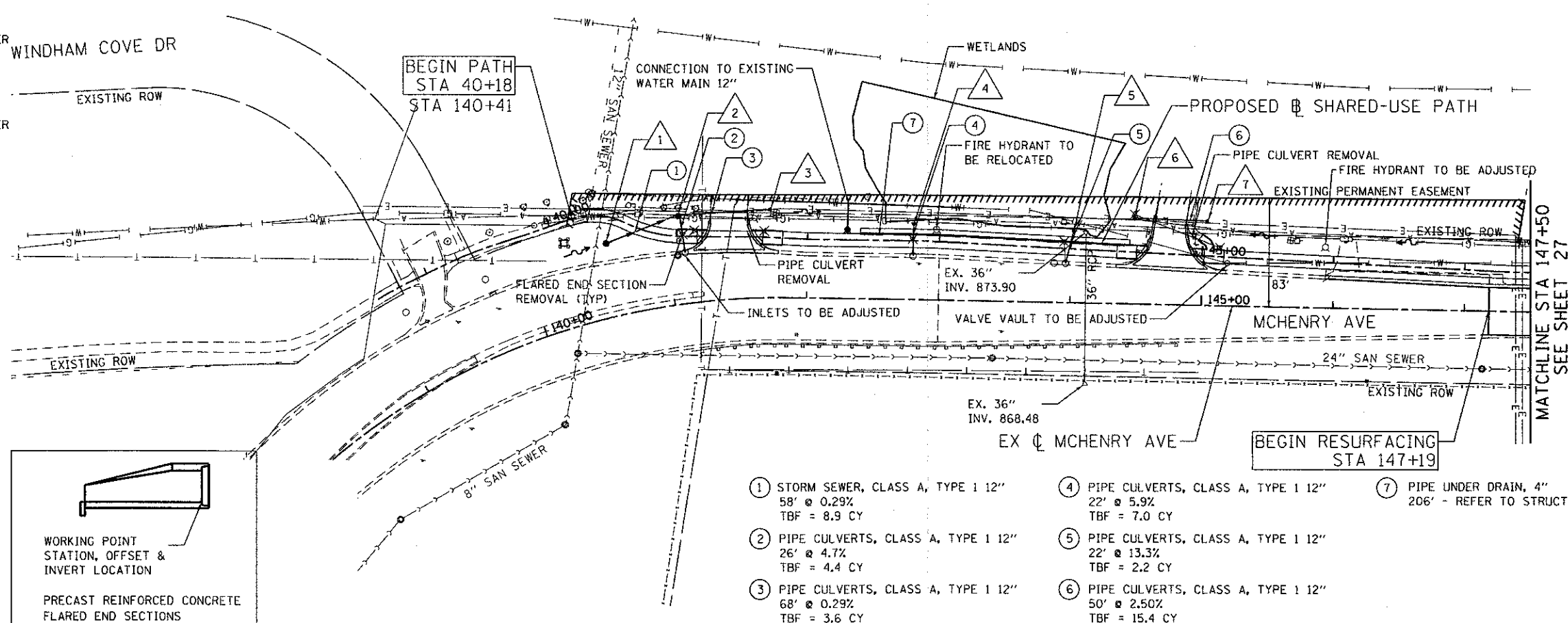
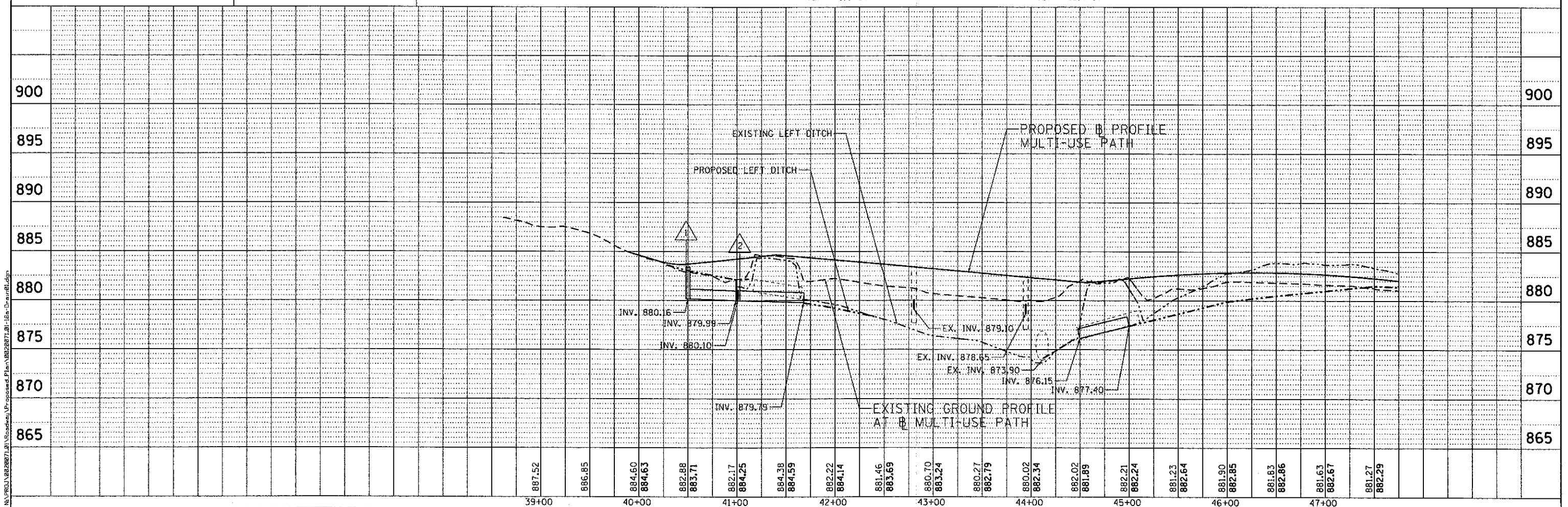




- 1 40+50 / 20' RT  
CATCH BASINS, TYPE A, 4'-DIAMETER  
TYPE B GRATE  
RIM = 883.41  
INV. = 880.16
- 2 41+01 / 15.3' LT  
CATCH BASINS, TYPE A, 4'-DIAMETER  
TYPE B GRATE  
RIM = 882.15  
INV. = 879.99 (N/SE)  
INV. = 880.10 (E)
- 3 41+68 / 21.3' LT  
PRECAST REINFORCED CONCRETE  
FLARED END SECTIONS 12"  
INV. = 879.79
- 4 42+80 / 10.5' LT  
PRECAST REINFORCED CONCRETE  
FLARED END SECTIONS 12"  
INV. = 877.81
- 5 44+01 / 10.5' LT  
PRECAST REINFORCED CONCRETE  
FLARED END SECTIONS 12"  
INV. = 875.72
- 6 44+50 / 25.8' LT  
PRECAST REINFORCED CONCRETE  
FLARED END SECTIONS 12"  
INV. = 876.15
- 7 45+00 / 26.6' LT  
PRECAST REINFORCED CONCRETE  
FLARED END SECTIONS 12"  
INV. = 877.40



- 1 STORM SEWER, CLASS A, TYPE 1 12"  
58' @ 0.29%  
TBF = 8.9 CY
- 2 PIPE CULVERTS, CLASS A, TYPE 1 12"  
26' @ 4.7%  
TBF = 4.4 CY
- 3 PIPE CULVERTS, CLASS A, TYPE 1 12"  
68' @ 0.29%  
TBF = 3.6 CY
- 4 PIPE CULVERTS, CLASS A, TYPE 1 12"  
22' @ 5.9%  
TBF = 7.0 CY
- 5 PIPE CULVERTS, CLASS A, TYPE 1 12"  
22' @ 13.3%  
TBF = 2.2 CY
- 6 PIPE CULVERTS, CLASS A, TYPE 1 12"  
50' @ 2.50%  
TBF = 15.4 CY
- 7 PIPE UNDER DRAIN, 4"  
206' - REFER TO STRUCTURAL PLAN



**ENGINEERING CONSULTANT**  
**Glomba Group, Inc.**  
 CONSULTING ENGINEERS  
 5507 North Cicero Avenue, Suite 402  
 Chicago, Illinois 60630  
 Tel: 773-5308 Fax: 773-778-4014  
 Email: chicago@glomba.com

USER NAME = ehorn  
 PLOT SCALE = 50.0000' / 1" =  
 PLOT DATE = 2/22/2013

DESIGNED - RJR  
 DRAWN - AMH  
 CHECKED - MRJ  
 DATE - FEBRUARY 4, 2013

REVISED -  
 REVISED -  
 REVISED -  
 REVISED -

**STATE OF ILLINOIS**  
**DEPARTMENT OF TRANSPORTATION**

**MCHENRY AVENUE**  
**DRAINAGE PLAN AND PROFILE**

SCALE: 1" = 50' SHEET NO. OF SHEETS STA. TO STA.

F.A.U. RTE.	SECTION	COUNTY	TOTAL SHEETS	SHEET NO.
120	11-00115-00-RS	MCHENRY	62	26
CONTRACT NO. 63806			ILLINOIS FED. AID PROJECT	