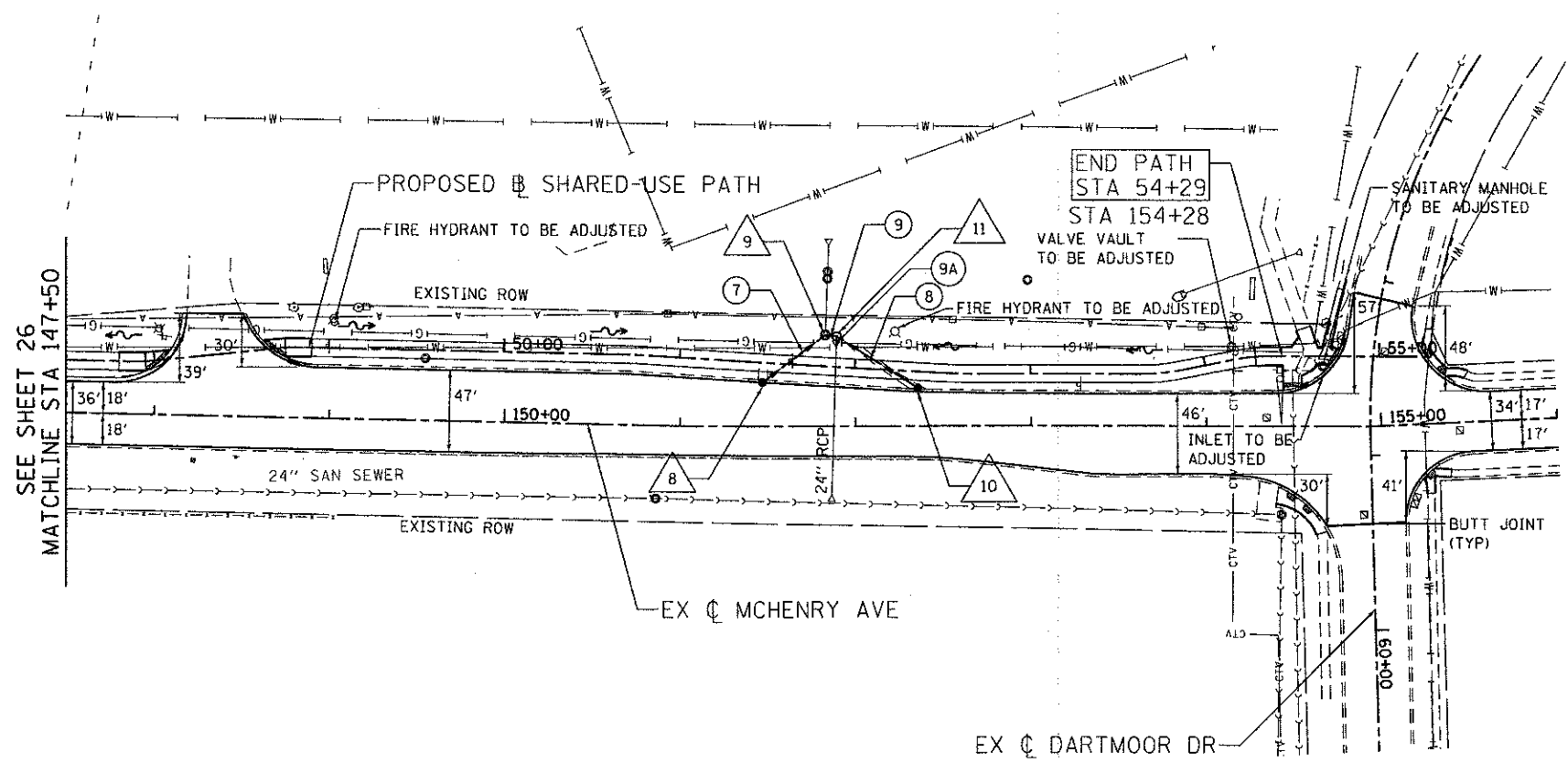
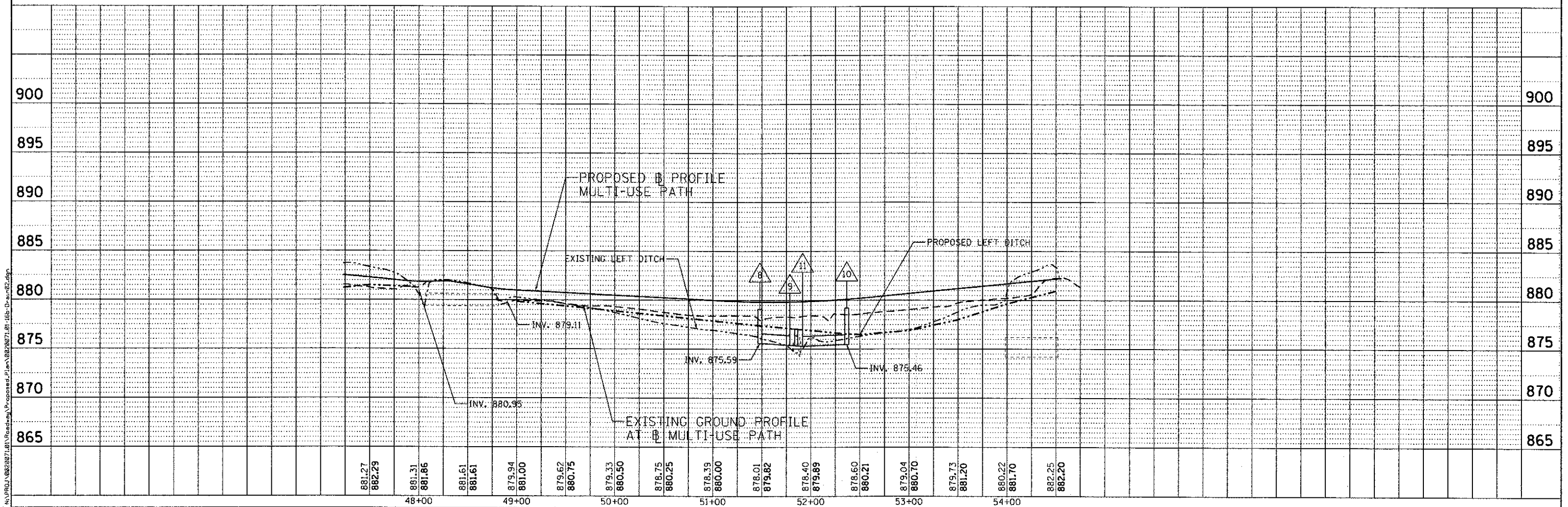




- 8 51+48 / 11.3' RT  
CATCH BASINS, TYPE A, 4'-DIAMETER  
TYPE 11 FRAME AND GRATE  
RIM = 879.11  
INV. = 875.59
- 9 STA 51+82, 17.8' LT  
MANHOLES, TYPE A 5'-DIAMETER  
TYPE 8 GRATE  
RIM = 877.04  
INV = 875.37 (SE)  
INV = 874.65 (W)  
INV = 874.24 (N)
- 10 52+37 / 11.5' RT  
CATCH BASINS, TYPE A, 4'-DIAMETER  
TYPE 11 FRAME AND GRATE  
RIM = 879.20  
INV. = 875.46
- 11 STA 51+89, 17.4' LT  
MANHOLES, TYPE A 5'-DIAMETER  
TYPE 8 GRATE  
RIM = 877.00  
INV = 874.23 (EXS)  
INV = 875.30 (NE)



- 7 STORM SEWER, CLASS A, TYPE 1 12"  
45' @ 0.49%  
TBF = 6.4 CY
- 8 STORM SEWER, CLASS A, TYPE 1 12"  
55' @ 0.29%  
TBF = 8.5 CY
- 9 STORM SEWER, CLASS A, TYPE 1 12"  
7' @ 0.14%  
TBF = 1 CY
- 9A PIPE CULVERTS, CLASS A, TYPE 1 24"  
6' @ 0.96%  
TBF = 1 CY  
CONNECT TO EXISTING 24" CULVERT  
(INCLUDED)



<b>ENGINEERING CONSULTANT</b>  CONSULTING ENGINEERS 5907 North Cumberland Avenue, Suite 402 Chicago, Illinois 60630 Tel: 773-775-4000 Fax: 773-775-4014 Email: glomba@glomba.com	USER NAME = aharn PLOT SCALE = 50.0000' / 1" = PLOT DATE = 2/22/2013	DESIGNED - RJR DRAWN - AMH CHECKED - MRJ DATE - FEBRUARY 4, 2013	REVISED - REVISED - REVISED - REVISED -	<b>STATE OF ILLINOIS</b> <b>DEPARTMENT OF TRANSPORTATION</b>	<b>MCHENRY AVENUE</b> <b>DRAINAGE PLAN AND PROFILE</b> SCALE: 1" = 50' SHEET NO. OF SHEETS STA. TO STA.	<table border="1" style="width: 100%; border-collapse: collapse;"> <tr> <th>F.A.U. RTE.</th> <th>SECTION</th> <th>COUNTY</th> <th>TOTAL SHEETS</th> <th>SHEET NO.</th> </tr> <tr> <td>120</td> <td>11-00115-00-RS</td> <td>MCHENRY</td> <td>62</td> <td>27</td> </tr> </table>	F.A.U. RTE.	SECTION	COUNTY	TOTAL SHEETS	SHEET NO.	120	11-00115-00-RS	MCHENRY	62	27
F.A.U. RTE.	SECTION	COUNTY	TOTAL SHEETS	SHEET NO.												
120	11-00115-00-RS	MCHENRY	62	27												
CONTRACT NO. 63806 ILLINOIS FED. AID PROJECT																