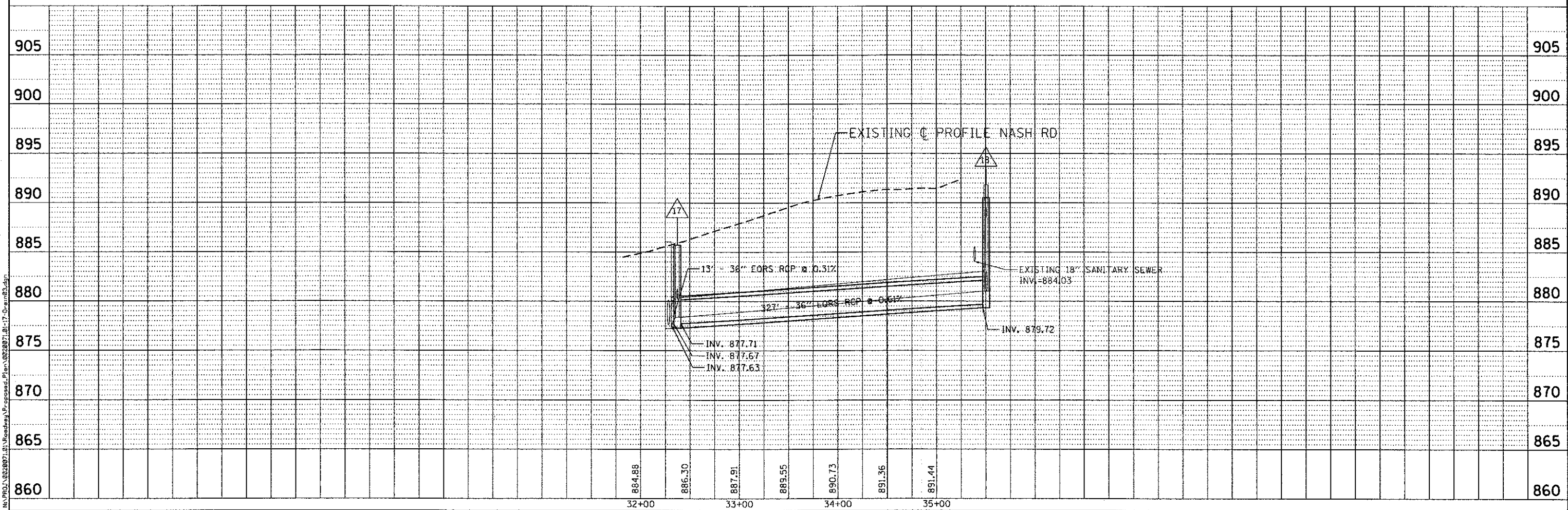
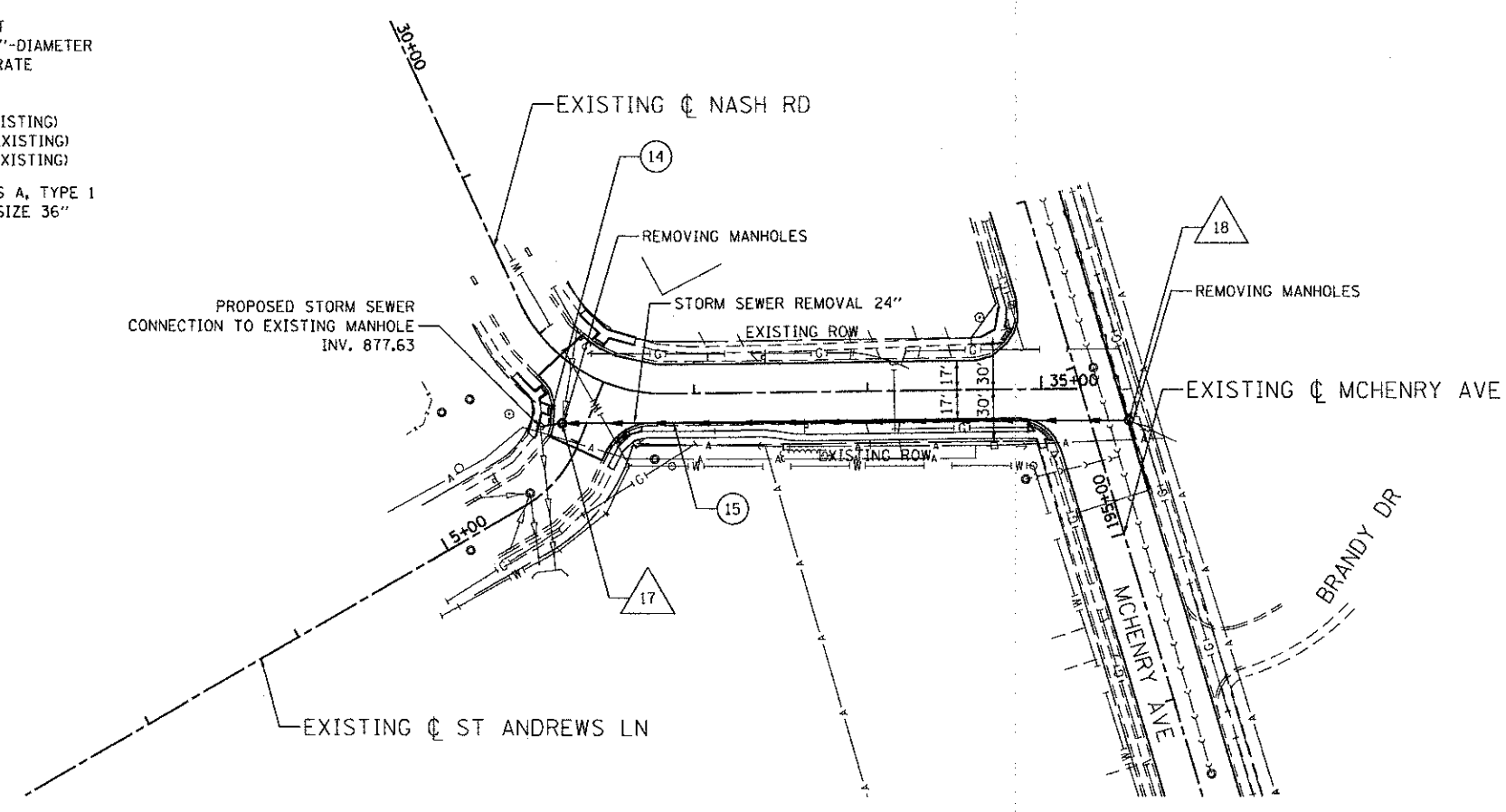


- △ 17 STA 32+37, 31.9' RT  
MANHOLES, TYPE A 7'-DIAMETER  
TYPE 1 FRAME CLOSED LID  
RIM = 885.73  
INV = 877.71 (E)  
INV = 877.67 (W)  
INV = 880.23 (N) (EXISTING)
- △ 18 STA 195+62, 21.5' RT  
MANHOLES, TYPE A 7'-DIAMETER  
TYPE 11 FRAME & GRATE  
RIM = 891.82  
INV = 879.82 (W)  
INV = 881.02 (N) (EXISTING)  
INV = 883.32 (SE) (EXISTING)  
INV = 888.52 (S) (EXISTING)
- ⑭ STORM SEWER, CLASS A, TYPE 1  
EQUIVALENT ROUND SIZE 36"  
13' @ 0.31%  
TBF = 5.4 CY
- ⑮ STORM SEWER, CLASS A, TYPE 1  
EQUIVALENT ROUND SIZE 36"  
327' @ 0.61%  
TBF = 564.0 CY



**ENGINEERING CONSULTANT**  
**Clorba Group, Inc.**  
 CONSULTING ENGINEERS  
 5607 North Cumberland Avenue, Suite 402  
 Chicago, Illinois 60630  
 Tel: 773.776.4000 Fax: 773.776.4014  
 Email: chicago@clorba.com

USER NAME = aham  
 PLOT SCALE = 50,0000' / 1" =  
 PLOT DATE = 2/22/2013

DESIGNED - RJR  
 DRAWN - AMH  
 CHECKED - MRJ  
 DATE - FEBRUARY 4, 2013

REVISED -  
 REVISED -  
 REVISED -  
 REVISED -

**STATE OF ILLINOIS**  
**DEPARTMENT OF TRANSPORTATION**

**MCHENRY AVENUE**  
**DRAINAGE PLAN AND PROFILE**

SCALE: 1" = 50' SHEET NO. OF SHEETS STA. TO STA.

F.A.U. RTE.	SECTION	COUNTY	TOTAL SHEETS	SHEET NO.
120	11-00115-00-RS	MCHENRY	62	28
CONTRACT NO. 63806			ILLINOIS FED. AID PROJECT	