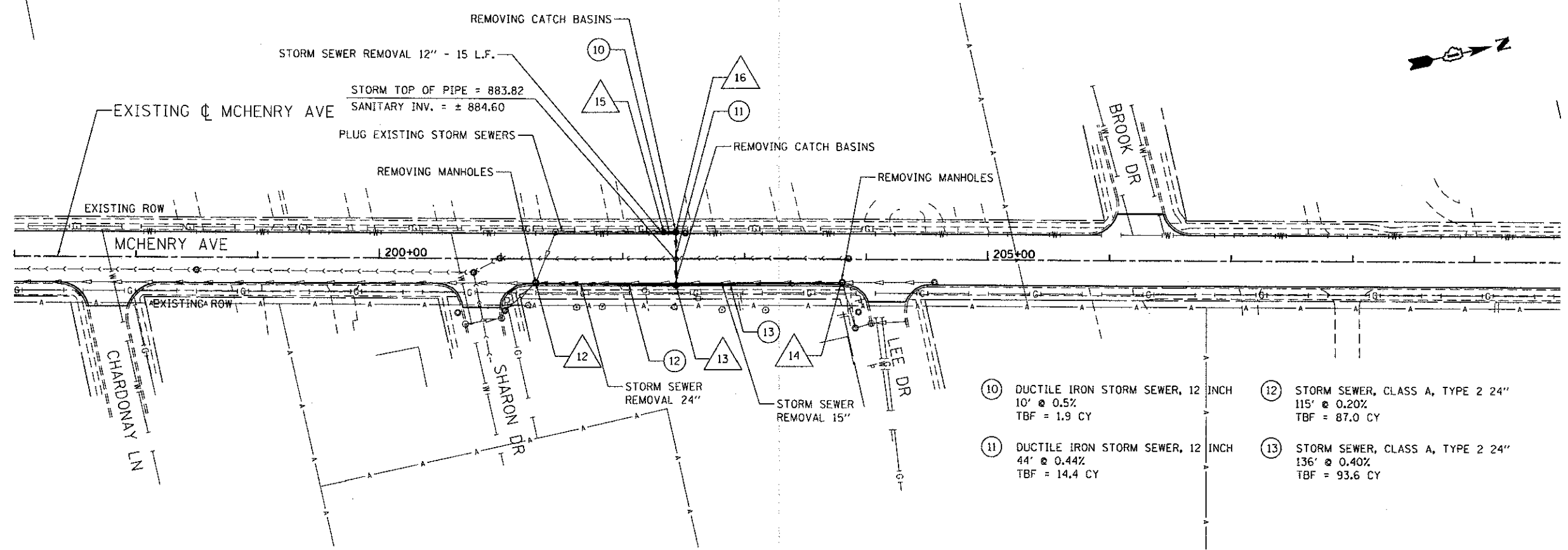
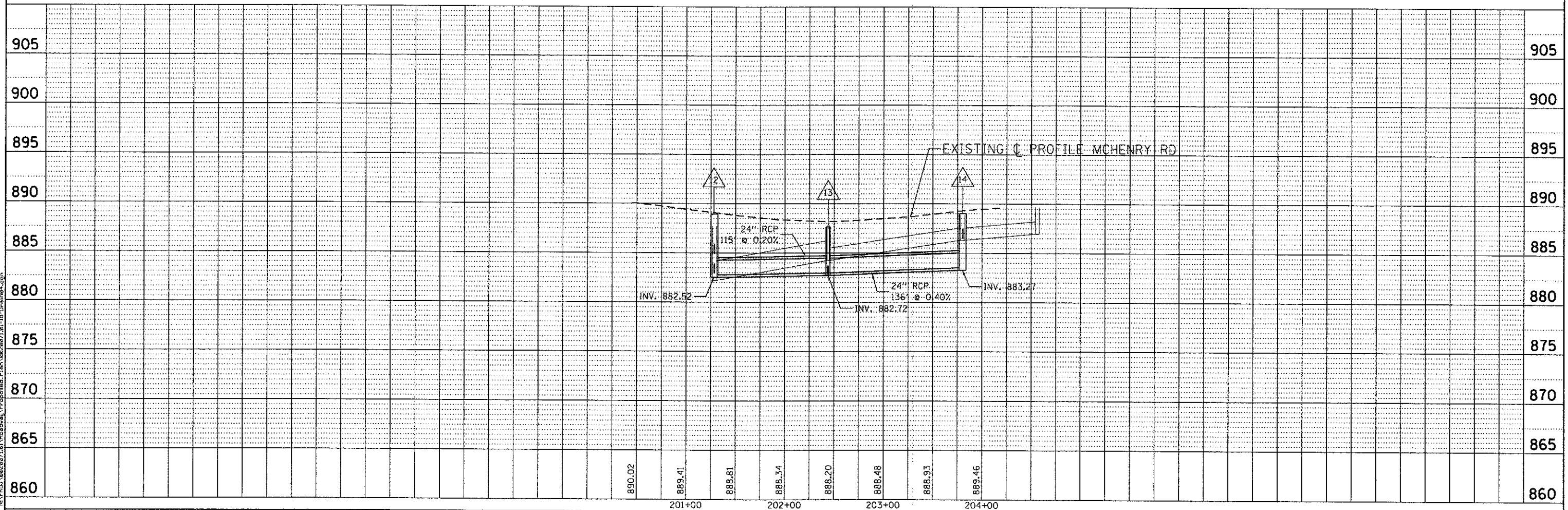


- 12 STA 201+28, 19.7' RT
MANHOLES, TYPE A 7'-DIAMETER
TYPE 1 FRAME CLOSED LID
RIM = 888.92
INV = 884.92 (SE) (EXISTING)
INV = 882.92 (NW) (EXISTING)
INV = 882.52 (S) (EXISTING)
INV = 882.52 (N)
- 13 STA 202+44, 20.5' RT
CATCH BASINS, TYPE A, 4-DIAMETER
TYPE 11 FRAME AND GRATE
RIM = 887.64
INV = 882.72 (N,S,W)
- 14 STA 203+80, 19.3' RT
MANHOLES, TYPE A 7'-DIAMETER
TYPE 1 FRAME CLOSED LID
RIM = 889.00
INV = 886.30 (N) (EXISTING)
INV = 883.27 (S)
INV = 886.47 (E) (EXISTING)
- 15 STA 202+34, 21' LT
CATCH BASINS, TYPE C,
TYPE 11 FRAME AND GRATE
RIM = 886.71
INV = 883.71
- 16 STA 202+44, 21' LT
CATCH BASINS, TYPE C,
TYPE 11 FRAME AND GRATE
RIM = 886.71
INV = 883.66 (S)
INV = 882.91 (E)



- 10 DUCTILE IRON STORM SEWER, 12 INCH
10' @ 0.5%
TBF = 1.9 CY
- 11 DUCTILE IRON STORM SEWER, 12 INCH
44' @ 0.44%
TBF = 14.4 CY
- 12 STORM SEWER, CLASS A, TYPE 2 24"
115' @ 0.20%
TBF = 87.0 CY
- 13 STORM SEWER, CLASS A, TYPE 2 24"
136' @ 0.40%
TBF = 93.6 CY



N:\VFD\0822071\01\Roadway\Proposed_Plan\0822071_01_18_Drain04.dgn

	USER NAME = shorn	DESIGNED - RJR	REVISED -	STATE OF ILLINOIS DEPARTMENT OF TRANSPORTATION	MCHENRY AVENUE DRAINAGE PLAN AND PROFILE	F.A.J. RTE. 120	SECTION 11-00115-00-RS	COUNTY MCHENRY	TOTAL SHEETS 62	SHEET NO. 29
	CONSULTING ENGINEERS 6807 North Cumberland Avenue, Suite 402 Chicago, Illinois 60631 Tel: 773.775.4000 Fax: 773.775.4014 Email: info@clorba.com	PLOT SCALE = 50.0000' / in.	CHECKED - MRJ			REVISED -	SCALE: 1" = 50'		SHEET NO. OF SHEETS STA. TO STA.	
	PLOT DATE = 2/22/2013	DATE - FEBRUARY 4, 2013	REVISED -			ILLINOIS FED. AID PROJECT				