

F.A.P. RTE.	SECTION	COUNTY	TOTAL SHEETS	SHEET NO.
12-00156-00-SW	DUPAGE		44	1

CONTRACT NO. 63810

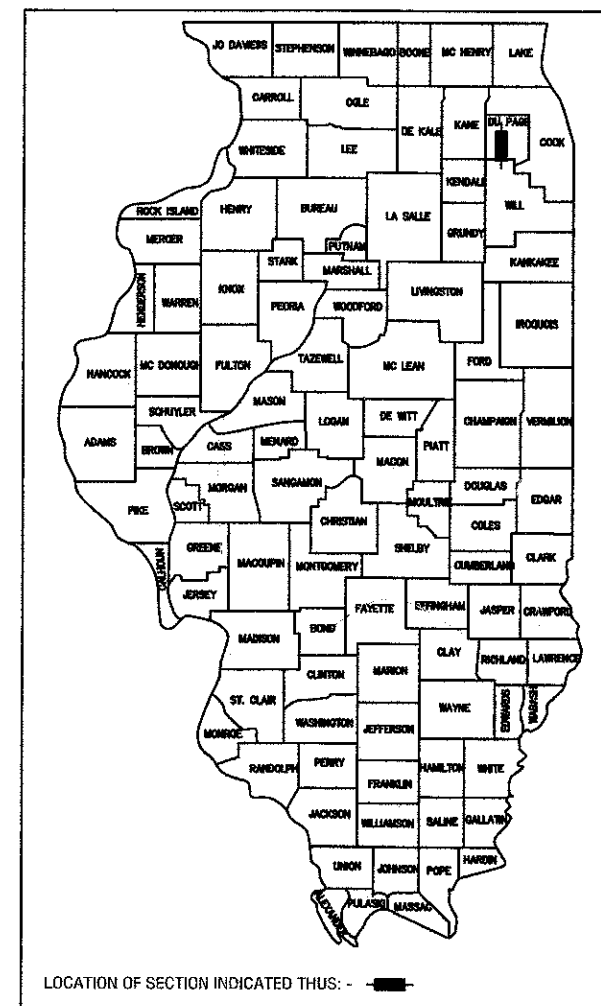
INDEX OF SHEETS

SHEET NO.	DESCRIPTION
1	COVER SHEET
2	GENERAL NOTES, STANDARDS
3	SUMMARY OF QUANTITIES
4	TYPICAL SECTIONS
5-8	SCHEDULE OF QUANTITIES
9-24	PLAN AND PROFILE
25	CITY OF NAPERVILLE DETAILS
26-44	CROSS SECTIONS

STATE OF ILLINOIS  
DEPARTMENT OF TRANSPORTATION  
DIVISION OF HIGHWAYS

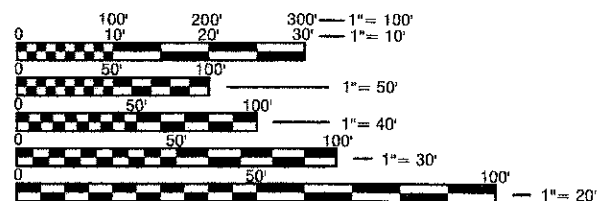
PLANS FOR PROPOSED  
FEDERAL AID HIGHWAY

VARIOUS ROUTES  
VARIOUS LIMITS  
SECTION 12-00156-00-SW  
PROJECT SRTS-4009(198)  
SIDEWALK CONSTRUCTION  
CITY OF NAPERVILLE  
DUPAGE COUNTY  
C-91-578-12



TRAFFIC DATA

2008 ADT = VARIOUS, MAX = 300  
2030 ADT = VARIOUS, MAX = 300  
POSTED SPEED LIMIT = 25 MPH  
DESIGN DESIGNATION: LOCAL STREET

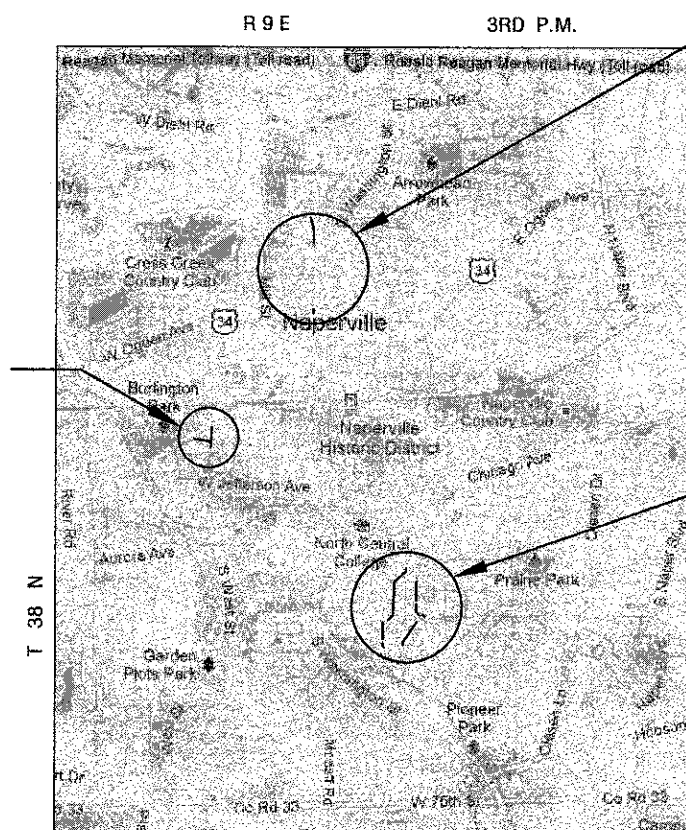


FULL SIZE PLANS HAVE BEEN PREPARED USING STANDARD ENGINEERING SCALES. REDUCED SIZED PLANS WILL NOT CONFORM TO STANDARD SCALES. IN MAKING MEASUREMENTS ON REDUCED PLANS, THE ABOVE SCALES MAY BE USED.

J.U.L.I.E.  
JOINT UTILITY LOCATION INFORMATION FOR EXCAVATION  
1-800-892-0123 OR 811

CONTRACT NO. 63810

PROJECT LOCATION 3  
WILSON AVENUE  
LARID STREET



NAPERVILLE TOWNSHIP LOCATION MAP  
NOT TO SCALE

PROJECT LOCATION 2  
WEBSTER STREET

PROJECT LOCATION 1  
SLEIGHT STREET  
WEHRLI DRIVE  
LOOMIS STREET  
WRIGHT STREET

GROSS AND NET LENGTH = 5,670 FT (1.07 MILES)



DATE: 2/4/13  
Expires: 11/30/2013

STATE OF ILLINOIS  
DEPARTMENT OF TRANSPORTATION  
DIVISION OF HIGHWAYS

Approved Feb 4 20 13  
[Signature]  
CITY OF NAPERVILLE, CITY ENGINEER

Passed February 20 20 13  
[Signature]  
DISTRICT 11 ENGINEER OF LOCAL ROADS AND STREETS

Released for Bid  
Based on Limited  
Review February 21 20 13  
[Signature]  
DEPUTY DIRECTOR OF HIGHWAYS, REGION 1 ENGINEER

PRINTED BY THE AUTHORITY  
OF THE STATE OF ILLINOIS

PROGRAM AND OFFICE ENGINEER: CHARLES F. RIDDLE, P.E. 847-705-4406 SCHAUMBURG, IL