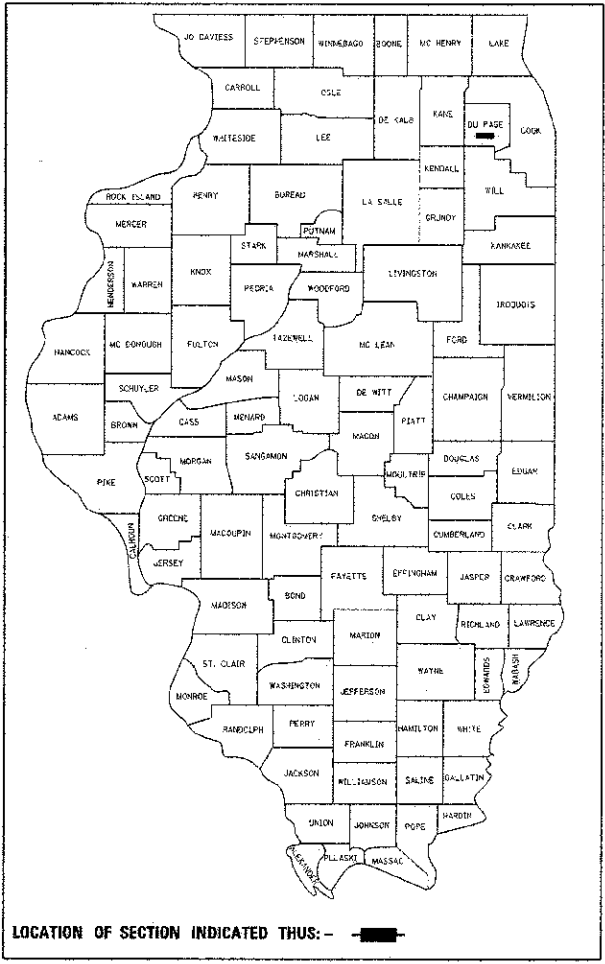


F.A. RTE.	SECTION	COUNTY	TOTAL SHEETS
2543	10-00045-00-BR	DuPAGE	18
		ILLINOIS	CONTRACT NO. 63812

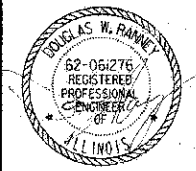
STATE OF ILLINOIS  
DEPARTMENT OF TRANSPORTATION  
DIVISION OF HIGHWAYS  
**PLANS FOR PROPOSED  
FEDERAL AID HIGHWAY**  
FAU ROUTE 2543 (WINFIELD ROAD)  
OVER SPRING BROOK  
CULVERT REPLACEMENT  
SECTION: 10-00045-00-BR  
PROJECT NO. BRM-9003(738)  
VILLAGE OF WINFIELD  
DuPAGE COUNTY  
C-97-177-11

**INDEX OF SHEETS**

NO.	DESCRIPTION
1	COVER SHEET
2	INDEX OF SHEETS, APPLICABLE HIGHWAY STANDARDS, GENERAL NOTES AND SUMMARY OF QUANTITIES
3	TYPICAL SECTIONS AND DETAILS
4	SCHEDULE OF QUANTITIES
5	ALIGNMENT TIES AND BENCHMARKS
6	WINFIELD ROAD PLAN AND PROFILE
7	DETOUR PLAN
8	EROSION AND SEDEMENTATION CONTROL NOTES
9	PLANTING PLAN EROSION AND SEDEMENTATION CONTROL PLAN
10	GENERAL PLAN AND ELEVATION
11	CULVERT DETAILS
12	CULVERT DETAILS
13	CULVERT DETAILS
14	SOIL BORING LOG
15	DISTRICT ONE TYPICAL PAVEMENT MARKINGS
16	BUTT JOINT AND HMA TAPER DETAILS
17	BICYCLE RAILING
18	ALUMINUM RAILING, TYPE L $\Delta$ 4/12/13



**REMPE-SHARPE**  
CONSULTING ENGINEERS  
IL P.D.F. LICENSE NO. 184-007896  
324 WEST STATE STREET - GENEVA, ILLINOIS 60134  
Telephone: (630) 232-0827 Fax: (630) 232-1650

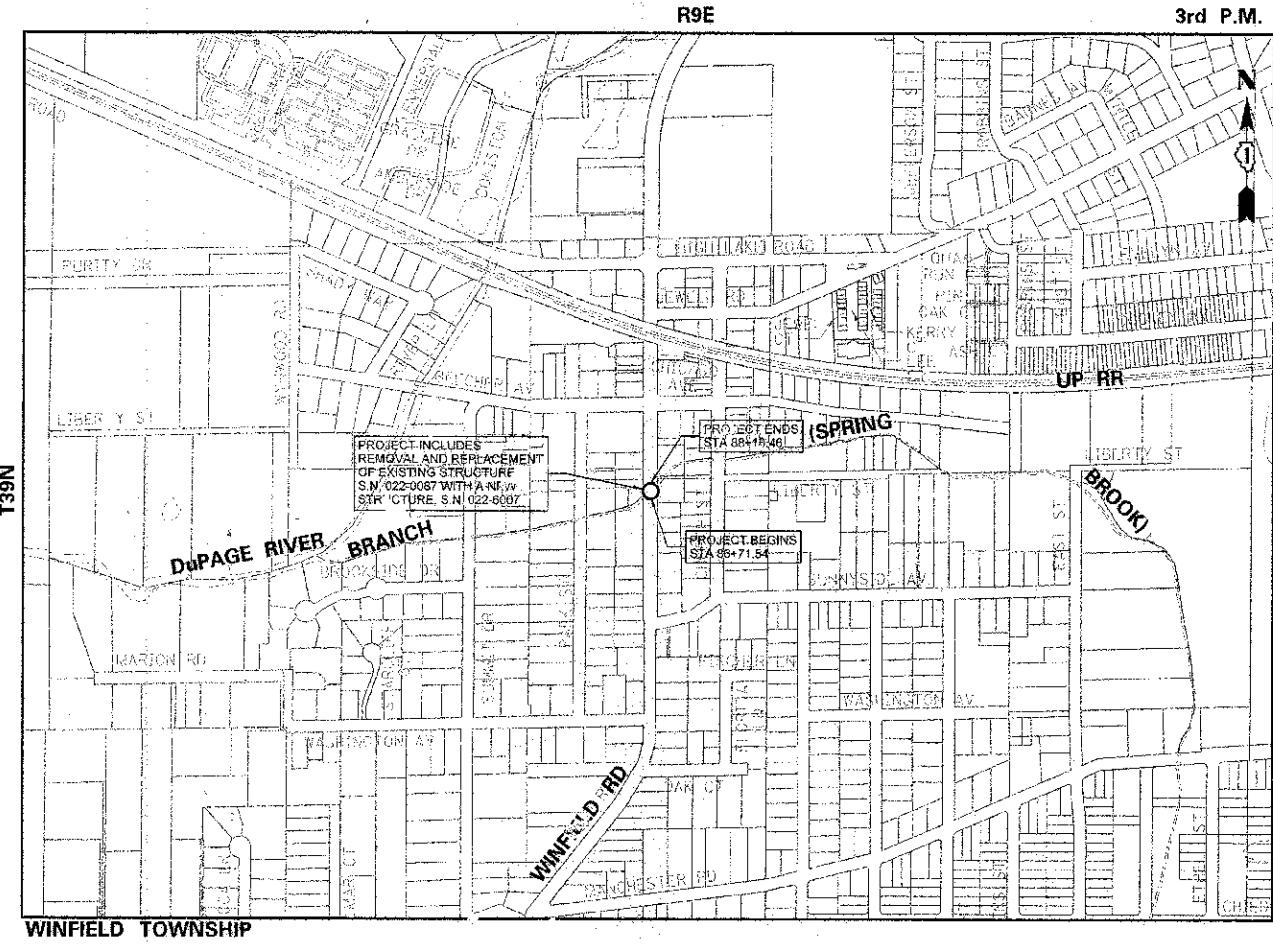


STATE OF ILLINOIS  
DEPARTMENT OF TRANSPORTATION  
DIVISION OF HIGHWAYS

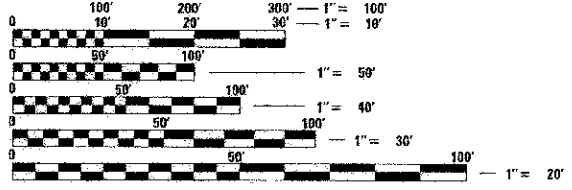
APPROVED January 24 2013  
*Robert Burt* Village of Winfield

PASSED FEBRUARY 25 2013  
*C. J. Holt* C.J. Holt  
DISTRICT ONE ENGINEER OF LOCAL ROADS AND STREETS

RELEASING FOR BID BASED ON LIMITED REVIEW February 27 2013  
*John Fortmann*  
DEPUTY DIRECTOR OF HIGHWAYS, REGION ONE ENGINEER



**TRAFFIC DATA**  
ADT (2012) = 9,600  
POSTED SPEED LIMIT = 30 MPH  
DESIGN SPEED = 35 MPH  
CLASSIFICATION = MINOR ARTERIAL



FULL SIZE PLANS HAVE BEEN PREPARED USING STANDARD ENGINEERING SCALES. REDUCED SIZED PLANS WILL NOT CONFORM TO STANDARD SCALES. IN MAKING MEASUREMENTS ON REDUCED PLANS, THE ABOVE SCALES MAY BE USED.

J.U.L.I.E.  
JOINT UTILITY LOCATION INFORMATION FOR EXCAVATION  
1-800-892-0123  
OR 811

PROGRAM AND OFFICE ENGINEER: CHARLES F. RIDDLE, P.E. 847-705-4406 SCHAUMBURG, IL

**CONTRACT NO. 63812**

**PRINTED BY THE AUTHORITY  
OF THE STATE OF ILLINOIS**

**SUMMARY OF QUANTITIES**

ITEM NO.	ITEM DESCRIPTION	UNIT	TOTAL	CONSTRUCTION TYPE	
				CODE: STP001	
20100110	TREE REMOVAL (6 TO 15 UNITS DIAMETER)	UNIT	8	8	
* 20101400	NITROGEN FERTILIZER NUTRIENT	POUND	13.5	13.5	
* 20101500	PHOSPHOROUS FERTILIZER NUTRIENT	POUND	13.5	13.5	
* 20101600	POTASSIUM FERTILIZER NUTRIENT	POUND	13.5	13.5	
* 21101625	TOPSOIL FURNISH AND PLACE, 6"	SQ YD	706	706	
* 25000110	SEEDING CLASS 1A	ACRE	0.14	0.14	
* 25000300	SEEDING CLASS 3	ACRE	0.01	0.01	
28000400	PERIMETER EROSION BARRIER	FOOT	60	60	
28100107	STONE RIPRAP, CLASS A4	SQ YD	50	50	
28200200	FILTER FABRIC	SQ YD	50	50	
31101200	SUBBASE GRANULAR MATERIAL, TYPE B 4"	SQ YD	100	100	
31101400	SUBBASE GRANULAR MATERIAL, TYPE B 6"	SQ YD	25	25	
35101600	AGGREGATE BASE COURSE, TYPE B 4"	SQ YD	823	823	
35101800	AGGREGATE BASE COURSE, TYPE B 6"	SQ YD	230	230	
40600100	BITUMINOUS MATERIALS (PRIME COAT)	GALLON	70	70	
40603080	HOT-MIX ASPHALT BINDER COURSE, IL-19-D, N80	TON	130	130	
40603335	HOT-MIX ASPHALT SURFACE COURSE, MIX "D", N80	TON	40	40	
42001185	BRIDGE APPROACH PAVEMENT	SQ YD	130	130	
42001430	BRIDGE APPROACH PAVEMENT CONNECTOR (FLEXIBLE)	SQ YD	45	45	
42400200	PORTLAND CEMENT CONCRETE SIDEWALK 5 INCH	SQ FT	495	495	
44000100	PAVEMENT REMOVAL	SQ YD	435	435	
44000181	HOT-FIX ASPHALT SURFACE REMOVAL, 3"	SQ YD	230	230	
44000200	DRIVEWAY PAVEMENT REMOVAL	SQ YD	9	9	
44600500	COMBINATION CURB AND GUTTER REMOVAL	FOOT	170	170	
44000600	SIDEWALK REMOVAL	SQ FT	495	495	
60100100	REMOVAL OF EXISTING STRUCTURES	EACH	1	1	
60200450	REMOVAL AND DISPOSAL OF UNSUITABLE MATERIAL FOR STRUCTURES	CU YD	15	15	
60300225	CONCRETE STRUCTURES	CU YD	44	44	
60800205	REINFORCEMENT BARS, EPOXY COATED	POUND	88147	88147	
* 60900185	ALUMINUM RAILING, TYPE L	FOOT	40	40	
* 60901770	BICYCLE RAILING	FOOT	55	55	
61500100	NAME PLATES	EACH	1	1	
64003090	CONCRETE BOX CULVERTS	CU YD	152	152	
650A0380	STORM SEWERS, CLASS A, TYPE 2 15"	FOOT	23	23	
650A0400	STORM SEWERS, CLASS A, TYPE 2 21"	FOOT	10	10	
65100760	STORM SEWER REMOVAL 15"	FOOT	20	20	
65101160	STORM SEWER REMOVAL 21"	FOOT	10	10	
60605000	COMBINATION CONCRETE CURB AND GUTTER, TYPE B-8-24	FOOT	170	170	
* 83000051	STEEL PLATE BEAM GUARDRAIL, TYPE A, 6 FOOT POSTS	FOOT	70	70	
* 83100105	TRAFFIC BARRIER TERMINAL, TYPE 1U	EACH	2	2	
83200310	GUARDRAIL REMOVAL	FOOT	95	95	
87100100	MOBILIZATION	L SUM	1	1	
* 78000200	THERMOPLASTIC PAVEMENT MARKING - LINE 4"	FOOT	892	892	
* 78000600	THERMOPLASTIC PAVEMENT MARKING - LINE 12"	FOOT	32	32	
* C2001536	SHRUB, CORNUS RACEMOSA (GREY DOGWOOD), 3' HEIGHT, BALLED AND BURLA	EACH	4	4	
* C2005938	SHRUB, RHUS GLABRA (SMOOTH SUMAC), 3' HEIGHT, CONTAINER	EACH	4	4	
* K0029634	WEED CONTROL, PRE-EMERGENT GRANULAR HERBICIDE	POUND	1	1	
* LR631020	TRAFFIC BARRIER TERMINAL, TYPE 1	EACH	2	2	
X0300018	CONCRETE WINGWALL REMOVAL	EACH	4	4	
X0428200	DEWATERING	L SUM	1	1	
X2010304	POROUS GRANULAR EMBANKMENT, SPECIAL	CU YD	15	15	
X2811630	EROSION CONTROL BLANKET (SPECIAL)	SQ YD	705	705	
X6440300	CHAIN LINK FENCE REMOVAL	FOOT	58	58	
X7010216	TRAFFIC CONTROL AND PROTECTION (SPECIAL)	L SUM	1	1	

**GENERAL NOTES**

**1. SPECIFICATIONS, STANDARDS AND SPECIAL PROVISIONS:**

ALL CONSTRUCTION SHALL BE PERFORMED IN ACCORDANCE WITH THE ILLINOIS DEPARTMENT OF TRANSPORTATION "STANDARD SPECIFICATIONS FOR ROAD AND BRIDGE CONSTRUCTION", ADOPTED JAN. 1, 2012 (HEREINAFTER REFERRED TO AS THE "STANDARD SPECIFICATIONS"); THE "SUPPLEMENTAL SPECIFICATIONS AND RECURRING SPECIAL PROVISIONS", ADOPTED JANUARY 1, 2013; THE LATEST EDITION OF THE "ILLINOIS MANUAL ON UNIFORM TRAFFIC CONTROL DEVICES FOR STREETS AND HIGHWAYS"; THE "DETAILS" ON THE PLANS AND THE "SPECIAL PROVISIONS" INCLUDED IN THE CONTRACT DOCUMENTS.

ANY REFERENCE TO STANDARDS THROUGHOUT THE PLANS OR SPECIAL PROVISIONS SHALL BE INTERPRETED AS THE LATEST STANDARD OF THE DEPARTMENT.

**2. PROTECTION OF PUBLIC/PRIVATE PROPERTY:**

THE CONTRACTOR SHALL PROTECT ALL EXISTING TREES TO REMAIN, SHRUBS, FENCES, DRAIN LINES, POWER LINES, AND OTHER PUBLIC/PRIVATE PROPERTY. ANY ITEM THAT IS DAMAGED SHALL BE REPLACED OR REPAIRED BY THE CONTRACTOR AS DIRECTED BY THE ENGINEER AT NO COST.

**3. EXISTING STREET CLEANLINESS:**

THE CONTRACTOR SHALL KEEP EXISTING AND ADJACENT STREETS CLEAN OF DIRT, MUD, AND OTHER DEBRIS AND, WHEN NECESSARY, CLEAN SAID PAVEMENTS ON A DAILY BASIS.

**4. REMOVAL, MAINTENANCE AND RESETTING EXISTING MAILBOXES, STREET SIGNS AND STOP SIGNS:**

EXISTING MAILBOXES, STREET SIGNS, AND STOP SIGNS WHICH INTERFERE WITH CONSTRUCTION SHALL BE REMOVED AND TEMPORARILY RELOCATED DURING CONSTRUCTION BY THE CONTRACTOR. AFTER THE WORK HAS BEEN SUBSTANTIALLY COMPLETED, SAID MAILBOXES AND SIGNS SHALL BE RESET AT A LOCATION SPECIFIED BY THE ENGINEER. THE COST OF THIS WORK SHALL BE CONSIDERED AS AN INCIDENTAL COST TO THE CONTRACT WITH NO ADDITIONAL COMPENSATION ALLOWED. ANY SIGN DAMAGED OR LOST SHALL BE REPLACED AT THE CONTRACTOR'S EXPENSE. TEMPORARY STOP SIGNS SHALL BE PLACED AS REQUIRED BY THE ENGINEER AS PART OF THE TRAFFIC CONTROL AND PROTECTION PAY ITEM.

**5. CONSTRUCTION LIMITS:**

THE CONTRACTOR SHALL CONFINE HIS OPERATIONS WITHIN THE DEDICATED ROADWAY RIGHT-OF-WAY OR EASEMENTS OBTAINED BY THE VILLAGE OF WINFIELD. ANY DAMAGE OUTSIDE OF SAID RIGHT-OF-WAY OR EASEMENTS SHALL BE REPAIRED AT THE CONTRACTOR'S EXPENSE.

**6. BARRICADES:**

THE CONTRACTOR SHALL PROVIDE AND INSTALL TWO (2) WEIGHTED SANDBAGS ON EACH TYPE I OR TYPE II BARRICADE USED. ONE (1) WEIGHTED SANDBAG ACROSS EACH RAIL.

**7. AS-BUILT PLANS:**

THE ILLINOIS DEPARTMENT OF TRANSPORTATION IS NOT THE OWNER OF RECORD FOR THIS BRIDGE. THOSE SEEKING HISTORIC AS-BUILT OR OTHER RECORD PLANS AND DOCUMENTS MUST CONTACT THE OWNER OF RECORD TO MAKE ARRANGEMENTS FOR ACCESS TO THIS INFORMATION.

**8. SOIL REPORT:**

GEOTECHNICAL SOILS REPORTS AND OTHER ADVANCED PLANNING DOCUMENTS WERE PREPARED FOR THIS PROJECT AND ARE AVAILABLE FOR BIDDERS' REVIEW BY CONTACTING THE LEAD LOCAL AGENCY AT TELEPHONE NUMBER (630) 933-7100.

\* SPECIALTY ITEMS

**APPLICABLE IDOT HIGHWAY STANDARDS**

IDOT NO.	STANDARD DRAWINGS
000001-06	STANDARD SYMBOLS, ABBREVIATIONS AND PATTERNS
280001-07	TEMPORARY EROSION CONTROL SYSTEMS
420401-09	BRIDGE APPROACH PAVEMENT CONNECTOR
515001-03	NAME PLATE FOR BRIDGES
606001-05	CONCRETE CURB TY B AND COMBINATION CONCRETE CURB AND GUTTER
830001-10	STEEL PLATE BEAM GUARDRAIL
831046-04	TRAFFIC BARRIER TERMINAL TYPE 10
701901-02	TRAFFIC CONTROL DEVICES
780001-03	TYPICAL PAVEMENT MARKINGS
BLR23-4	TRAFFIC BARRIER TERMINAL TYPE 1

FILE NAME =  
#FILES

USER NAME = #USER#  
DESIGNED - D.R.  
DRAWN - G.R.  
CHECKED - J.B.  
DATE -

DESIGNED - D.R.  
DRAWN - G.R.  
CHECKED - J.B.  
DATE -

REVISED - 4/12/13  
REVISED -  
REVISED -  
REVISED -

**STATE OF ILLINOIS  
DEPARTMENT OF TRANSPORTATION**

**INDEX OF SHEETS, APPLICABLE HIGHWAY STANDARDS,  
GENERAL NOTES AND SUMMARY OF QUANTITIES**

SCALE: NONE

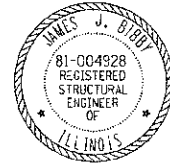
STA. 86+71.54 TO STA. 88+18.46

FED. RTE.	SECTION	COUNTY	TOTAL SHEETS	SHEET NO.
2543	10-00045-00-BR	DUPAGE	16	2
FED. ROAD DIST. NO. 1 ILLINOIS FED. AID PROJECT				CONTRACT NO. 63812

NOTE:  
SEE ALIGNMENT TIES AND BENCHMARKS  
SHEET FOR BENCHMARK INFORMATION.

**BILL OF MATERIAL**

ITEM	UNIT	TOTAL
POROUS GRANULAR EMBANKMENT	CU YD	15
STONE RIPRAP, CLASS A4	SQ YD	50
FILTER FABRIC	SQ YD	50
REMOVAL OF EXISTING STRUCTURES	EACH	1
REMOVAL AND DISPOSAL OF UNSUITABLE MATERIAL FOR STRUCTURES	CU YD	15
REINFORCEMENT BARS EPOXY COATED	POUND	83,868
NAME PLATES	EACH	1
CONCRETE BOX CULVERTS	CU YD	152



"I certify that to the best of my knowledge, information and belief, this bridge is structurally adequate for the design loading shown on the plans. The design is an economical one for the style of structure and complies with requirements of the current AASHTO Standard Specifications for Highway Bridges."

JAMES J. BIBBY  
ILLINOIS REGISTERED STRUCTURAL ENGINEER  
NO. 081-004928 EXPIRES 11-30-14

**WATERWAY INFORMATION**

Drainage Area = 8.65 Sq. Mi.

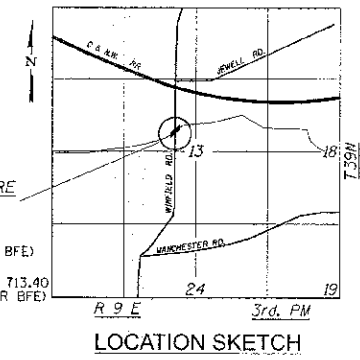
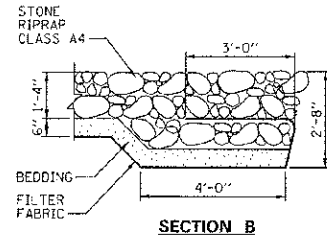
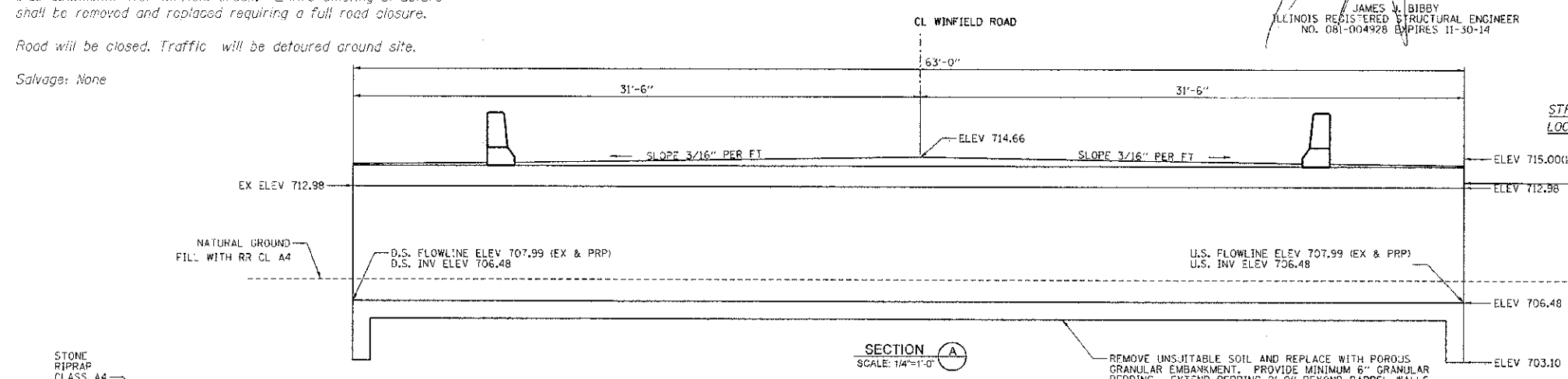
Flood	Frq. Yr.	C.F.S.	0	Opening Sq. Ft.	Nat. Prop.	Head - Ft.	Headwater El.
Design	50	655	74	74	714.39	0.53	714.92
Base	100	755	74	74	714.62	0.44	715.06
Overlapping	50	655	74	74	714.39	0.53	714.92
Max. Calc.	500	1065	74	74	715.11	0.29	715.40

**EXISTING STRUCTURE**

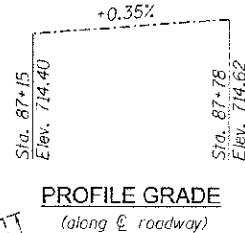
S.N. 022-0067 - First constructed in the 1920's, this bridge consists of a one span (26'-0") reinforced concrete slab on stub abutments over Winfield Creek. Entire existing structure shall be removed and replaced requiring a full road closure.

Road will be closed. Traffic will be detoured around site.

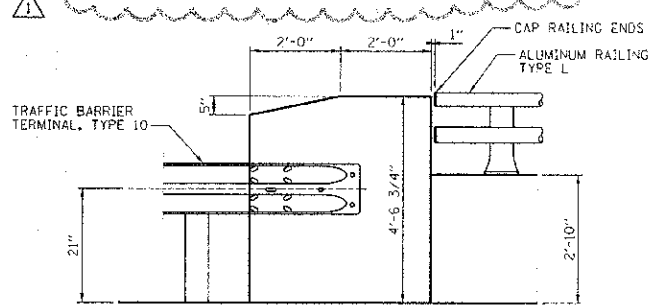
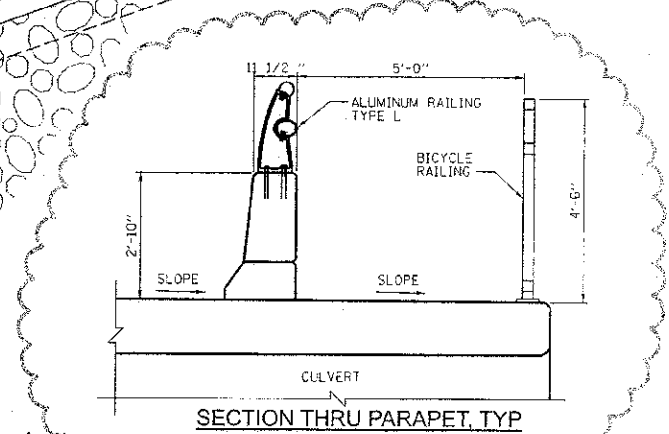
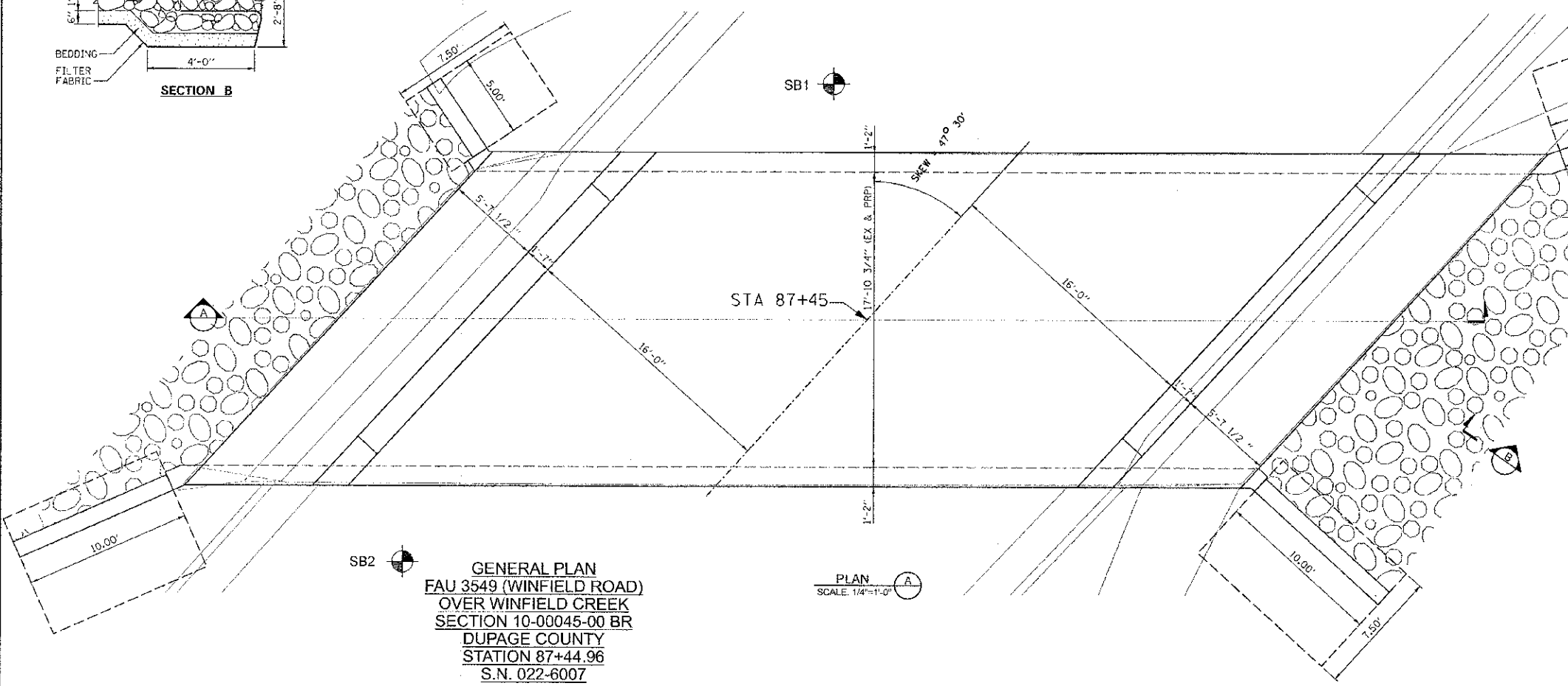
Salvage: None



**LOADING HL-93**  
Allow 50#/sq. ft. for future wearing surface.  
**DESIGN SPECIFICATIONS**  
2007 AASHTO LRFD Bridge Design Specifications with 2008 & 2009 Interims  
**DESIGN STRESSES**  
FIELD UNITS  
 $f_c = 5,000$  psi  
 $f_s = 60,000$  psi (reinforcement)



WINFIELD CREEK  
BUILT 2013 BY  
VILLAGE OF WINFIELD  
F.A.S. RT. 3549  
SEC. 10-00045-00-BR  
LOADING HL-93  
STR. NO. 022-6007  
**NAME PLATE**  
See Std. 515001

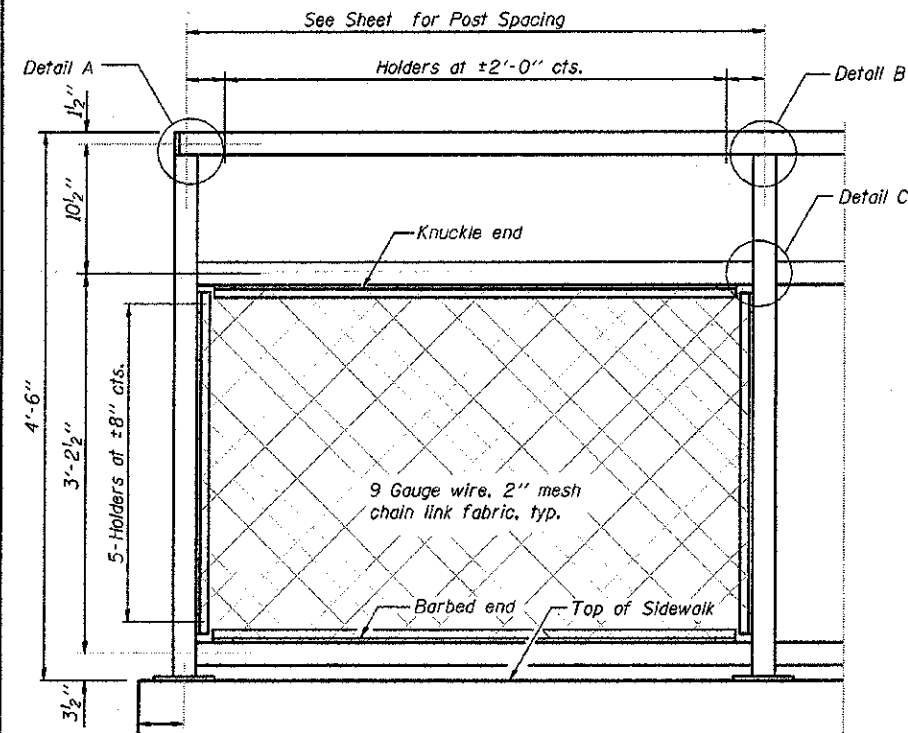


**GENERAL PLAN**  
FAU 3549 (WINFIELD ROAD)  
OVER WINFIELD CREEK  
SECTION 10-00045-00 BR  
DUPAGE COUNTY  
STATION 87+44.96  
S.N. 022-6007

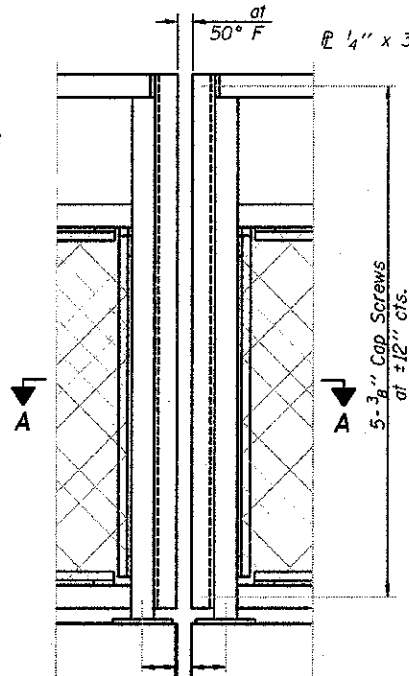
PLAN  
SCALE: 1/4"=1'-0"

ELEVATION

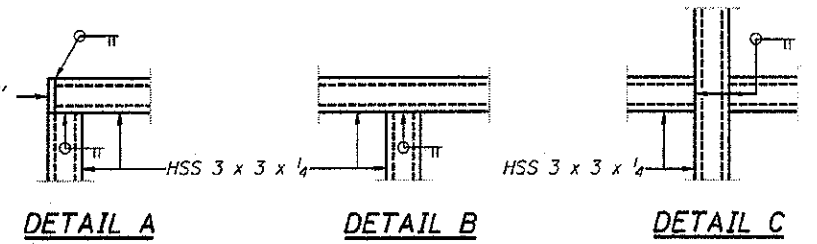
FILE NAME =	USER NAME = #USER#	DESIGNED - D.R.	REVISED - 4/12/13	STATE OF ILLINOIS DEPARTMENT OF TRANSPORTATION	GENERAL PLAN AND ELEVATION STRUCTURE NO. 022-6007	F.A.U. I. R.T.E. = 2543	SECTION = 10-00045-00-BR	COUNTY = DUPAGE	TOTAL SHEETS = 16	SHEET NO. = 10
PLT SCALE = #SCALE#	DRAWN - G.R.	CHECKED - J.E.	DATE =			SCALE =	STA. 86+71.54 TO STA. 88+18.46	FED. ROAD DIST. NO. 1	ILLINOIS FED. AID PROJECT	CONTRACT NO. 63812



**BICYCLE RAILING**



**BICYCLE RAILING**

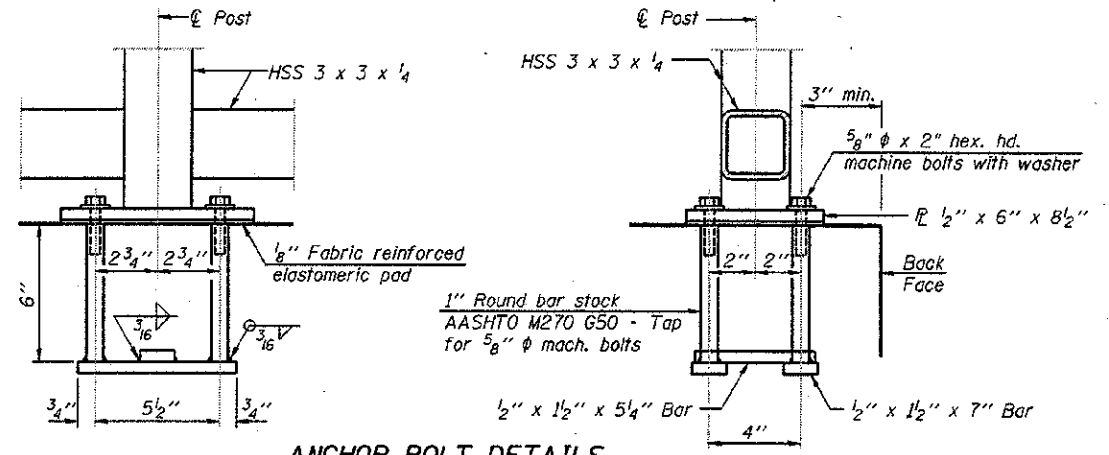
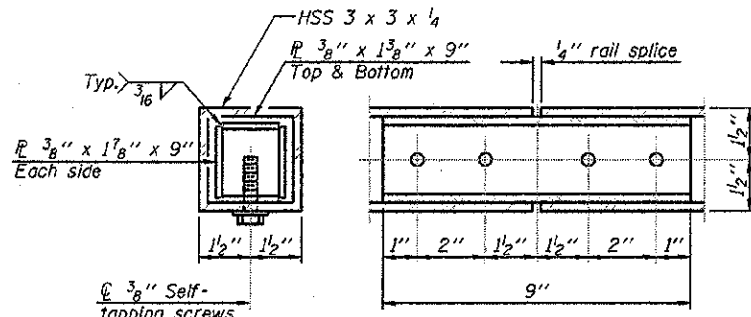
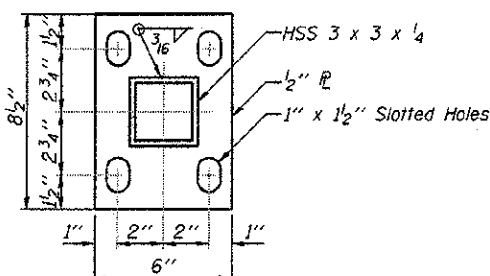
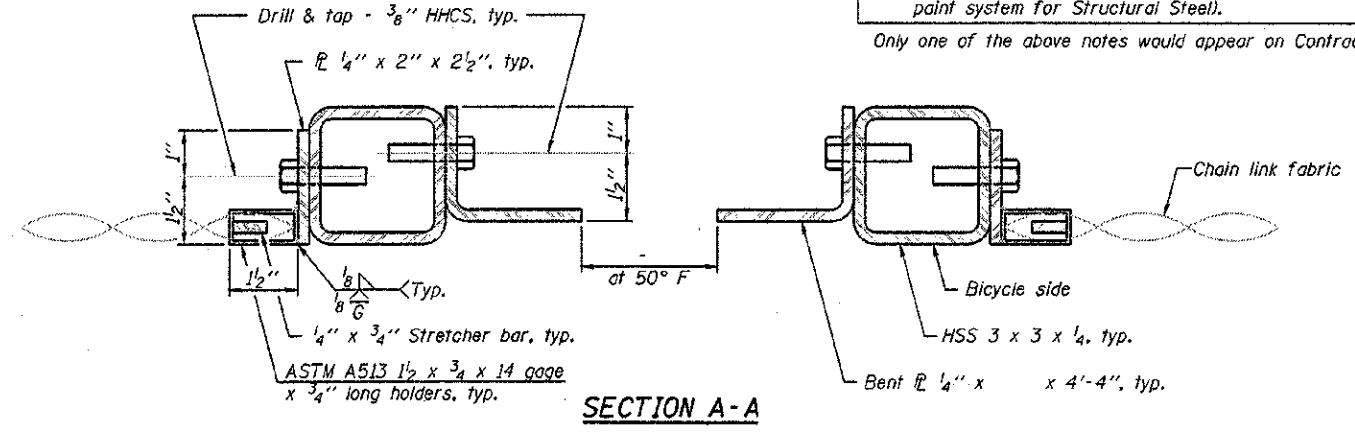


The designer should add the appropriate note as applicable.

A. When railing is galvanized:  
All steel rail elements shall be galvanized according to Article 509.05 of the Standard Specifications.

B. When railing is painted:  
All post, railing, splices, anchor devices, and bent plates shall be painted using the (List the appropriate paint system for Structural Steel).

Only one of the above notes would appear on Contract Plans.



In lieu of the cast-in-place anchor device shown, the Contractor has the option of drilling and setting 5/8" φ anchor rods according to Article 509.06 of the Standard Specifications. Embedment shall be according to the manufacturer's specifications.

**BILL OF MATERIAL**

Item	Unit	Quantity
Bicycle Railing	Foot	55

R-29 1-27-12 (10'-0" Maximum Post Spacing)

FILE NAME =	USER NAME = USER	DESIGNED - D.R	REVISED - 4/12/13	<b>STATE OF ILLINOIS DEPARTMENT OF TRANSPORTATION</b>	<b>BICYCLE RAILING STRUCTURE NO. 022-6007</b>	F.A.U. R.T.E. = 2543	SECTION = 10-00045-00-BR	COUNTY = DuPAGE	TOTAL SHEETS = 18	SHEET NO. = 17	
PLOT SCALE = 1/80 ft / IN.	CHECKED - J.B	REVISED -	REVISED -			SCALE:	STA. 86+71.54 TO STA. 88+18.46	FED. ROAD DIST. NO. 1 ILLINOIS FED. AID PROJECT		CONTRACT NO. 63812	
PLOT DATE = 4/16/2013	DATE -	REVISED -	REVISED -								

