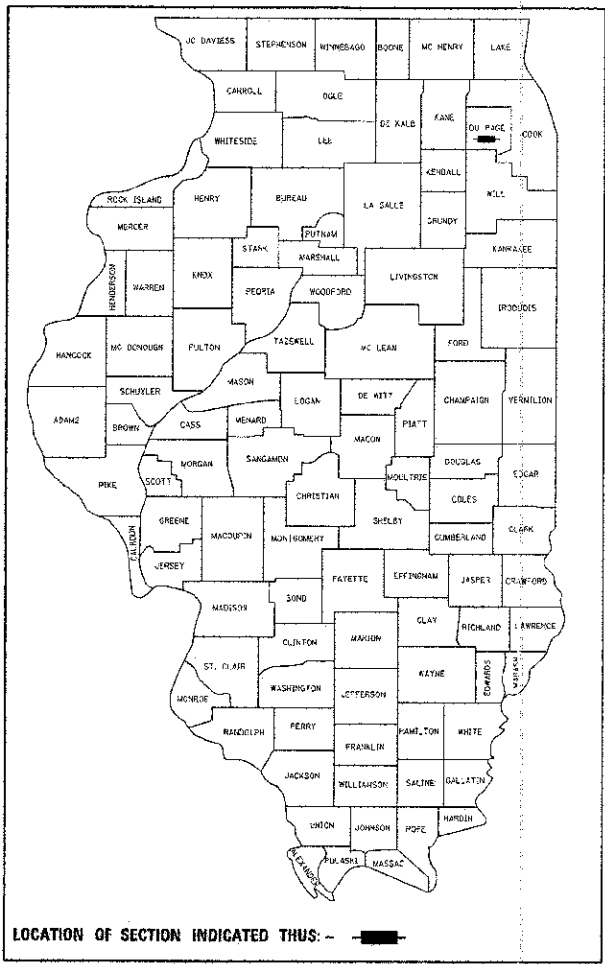


F.A. RTE.	SECTION	COUNTY	TOTAL SHEETS
2543	10-00045-00-BR	DUPAGE	16
		ILLINOIS	CONTRACT NO. 63812

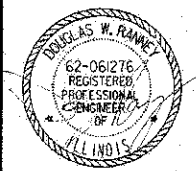
STATE OF ILLINOIS
DEPARTMENT OF TRANSPORTATION
DIVISION OF HIGHWAYS
**PLANS FOR PROPOSED
FEDERAL AID HIGHWAY**
FAU ROUTE 2543 (WINFIELD ROAD)
OVER SPRING BROOK
CULVERT REPLACEMENT
SECTION: 10-00045-00-BR
PROJECT NO. BRM-9003(738)
VILLAGE OF WINFIELD
DuPAGE COUNTY
C-97-177-11

INDEX OF SHEETS

NO.	DESCRIPTION
1	COVER SHEET
2	INDEX OF SHEETS, APPLICABLE HIGHWAY STANDARDS, GENERAL NOTES AND SUMMARY OF QUANTITIES
3	TYPICAL SECTIONS AND DETAILS
4	SCHEDULE OF QUANTITIES
5	ALIGNMENT TIES AND BENCHMARKS
6	WINFIELD ROAD PLAN AND PROFILE
7	DETOUR PLAN
8	EROSION AND SEDEMENTATION CONTROL NOTES
9	PLANTING PLAN EROSION AND SEDEMENTATION CONTROL PLAN
10	GENERAL PLAN AND ELEVATION
11	CULVERT DETAILS
12	CULVERT DETAILS
13	CULVERT DETAILS
14	SOIL BORING LOG
15	DISTRICT ONE TYPICAL PAVEMENT MARKINGS
16	BUTT JOINT AND HMA TAPER DETAILS



REMPE-SHARPE
CONSULTING ENGINEERS
IL P.D.P. LICENSE NO. 184-000395
324 WEST STATE STREET - GENEVA, ILLINOIS 60134
Telephone (830) 232-0827 - Fax (830) 232-1289



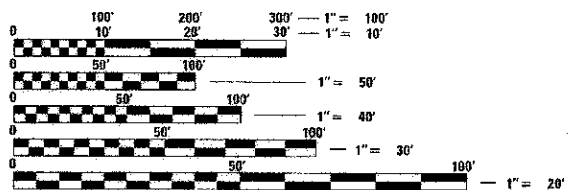
STATE OF ILLINOIS
DEPARTMENT OF TRANSPORTATION
DIVISION OF HIGHWAYS

APPROVED January 24 2013
Robert B. ...
VILLAGE OF WINFIELD

PASSED FEBRUARY 25 2013
C. J. Holt
DISTRICT ONE ENGINEER OF LOCAL ROADS AND STREETS

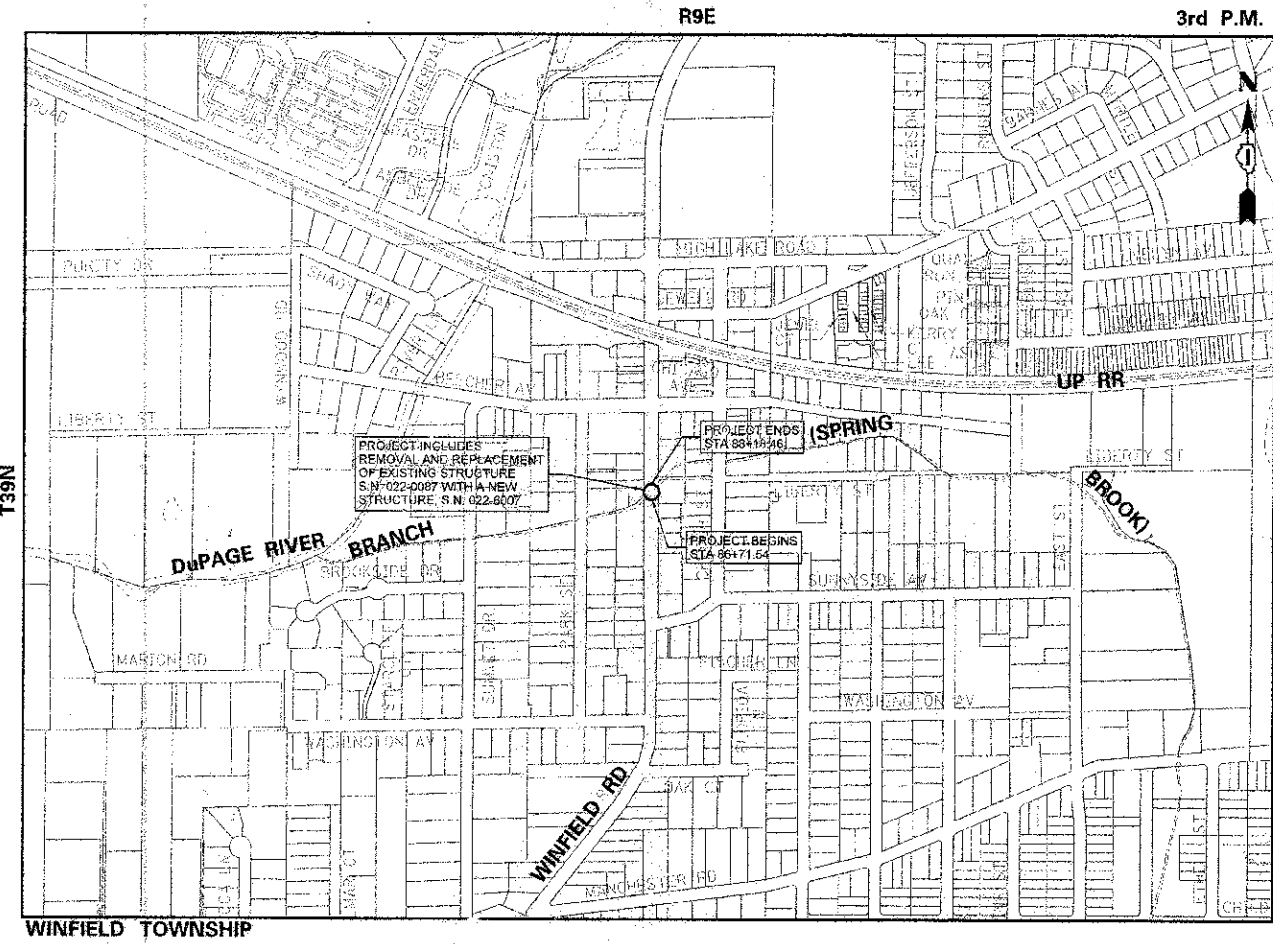
RELEASING FOR BID BASED ON LIMITED REVIEW February 27 2013
John Fortmann
DEPUTY DIRECTOR OF HIGHWAYS, REGION ONE ENGINEER

TRAFFIC DATA
ADT (2012) = 9,600
POSTED SPEED LIMIT = 30 MPH
DESIGN SPEED = 35 MPH
CLASSIFICATION = MINOR ARTERIAL



FULL SIZE PLANS HAVE BEEN PREPARED USING STANDARD ENGINEERING SCALES. REDUCED SIZED PLANS WILL NOT CONFORM TO STANDARD SCALES. IN MAKING MEASUREMENTS ON REDUCED PLANS, THE ABOVE SCALES MAY BE USED.

J.U.L.I.E.
JOINT UTILITY LOCATION INFORMATION FOR EXCAVATION
1-800-892-0123
OR 811



GROSS LENGTH = 146.92 FT. = 0.03 MILE
NET LENGTH = 146.92 FT. = 0.03 MILE

CONTRACT NO. 63812

**PRINTED BY THE AUTHORITY
OF THE STATE OF ILLINOIS**

PROGRAM AND OFFICE ENGINEER: CHARLES F. RIDDLE, P.E. 847-705-4406 SCHAMBURG, IL