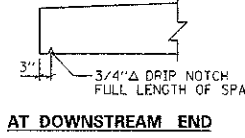
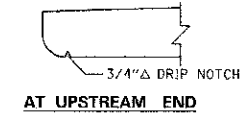
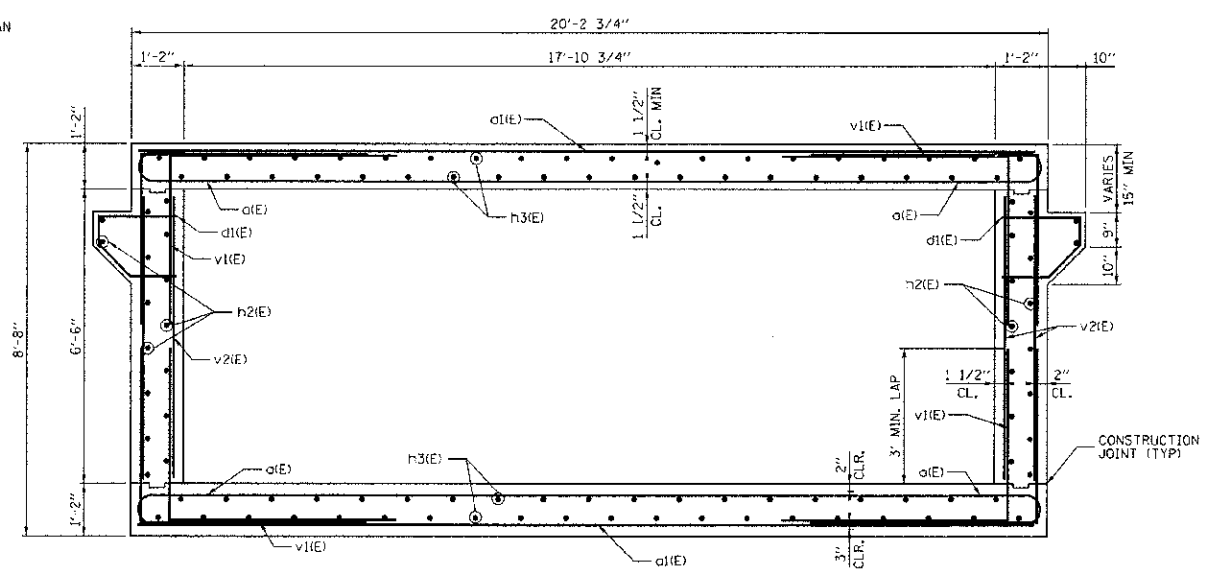


Bar	No.	Size	Length	Shape
a(E)	4	#9	30'-11"	U
a(E)	12	#9	30'-8"	U
a(E)	4	#9	30'-5"	U
a(E)	4	#9	30'-1"	U
a(E)	4	#9	29'-10"	U
a(E)	4	#9	29'-7"	U
a(E)	4	#9	29'-4"	U
a(E)	4	#9	29'-1"	U
a(E)	4	#9	28'-10"	U
a(E)	4	#9	28'-7"	U
a(E)	4	#9	28'-4"	U
a(E)	4	#9	28'-1"	U
a(E)	4	#9	27'-10"	U
a(E)	4	#9	27'-7"	U
a(E)	4	#9	27'-5"	U
a(E)	4	#9	27'-2"	U
a(E)	4	#9	26'-11"	U
a(E)	4	#9	26'-9"	U
a(E)	4	#9	26'-6"	U
a(E)	4	#9	26'-4"	U
a(E)	4	#9	26'-2"	U
a(E)	4	#9	26'-0"	U
a(E)	4	#9	25'-10"	U
a(E)	4	#9	25'-8"	U
a(E)	4	#9	25'-6"	U
a(E)	4	#9	25'-4"	U
a(E)	4	#9	25'-2"	U
a(E)	4	#9	25'-0"	U
a(E)	4	#9	24'-11"	U
a(E)	4	#9	24'-9"	U
a(E)	4	#9	24'-8"	U
a(E)	4	#9	24'-6"	U
a(E)	4	#9	24'-5"	U
a(E)	4	#9	24'-4"	U
a(E)	4	#9	24'-3"	U
a(E)	4	#9	24'-2"	U
a(E)	8	#9	24'-1"	U
a(E)	8	#9	24'-0"	U
a(E)	78	#9	23'-11"	U



SLAB END DETAIL

LONGITUDINAL SECTION

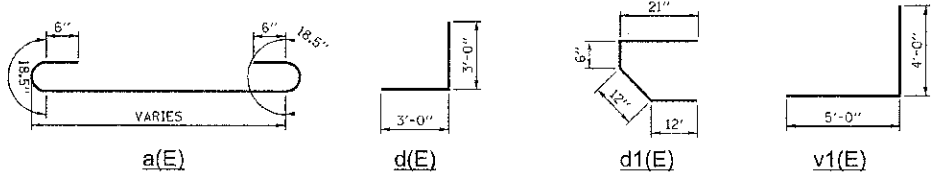


SECTION A-A

NOTES:
1. BARS INDICATED THUS: 6x3 - #5 ETC. INDICATES 6 LINES OF BARS WITH 3 LENGTHS PER LINE

2. MIN. BAR LAP

- #4 - 2'-7"
- #5 - 3'-0"
- #6 - 3'-8"
- #8 - 5'-0"
- #9 - 5'-6"



Bar	No.	Size	Length	Shape
t(E)	70	#6	7'-3"	U
w(E)	24	#5	9'-9"	U
w1(E)	8	#5	4'-9"	U
n(E)	70	#5	6'-6"	U
h(E)	24	#4	9'-9"	U
h1(E)	8	#4	4'-9"	U
h2(E)	84	#5	23'-0"	U
h3(E)	360	#8	24'-3"	U
h4(E)	14	#4	26'-9"	U
h5(E)	12	#4	2'-3"	U
a(E)	246	#9	VAR	U
a1(E)	242	#9	VAR	U
d(E)	40	#4	6'-0"	U
d1(E)	126	#4	4'-3"	U
v(E)	105	#5	8'-0"	U
v1(E)	504	#9	9'-0"	U
v2(E)	262	#5	6'-3"	U
b(E)	160	#5	37'-6"	U
b1(E)	74	#9	14'-6"	U
b2(E)	74	#5	15'-9"	U
b3(E)	108	#5	9'-9"	U
p(E)	54	#4	8'-2"	U
p1(E)	40	#4	5'-7"	U
p2(E)	14	#4	9'-2"	U

Item	Unit	Quantity
Bridge Approach Pavement	SQ YD	130
Concrete Structures	CU YD	44
Concrete Box Culvert	CU YD	152
Reinforcement Bars, Epoxy Coated	POUND	86,147

[Handwritten Signature]
Exp. 1-14