

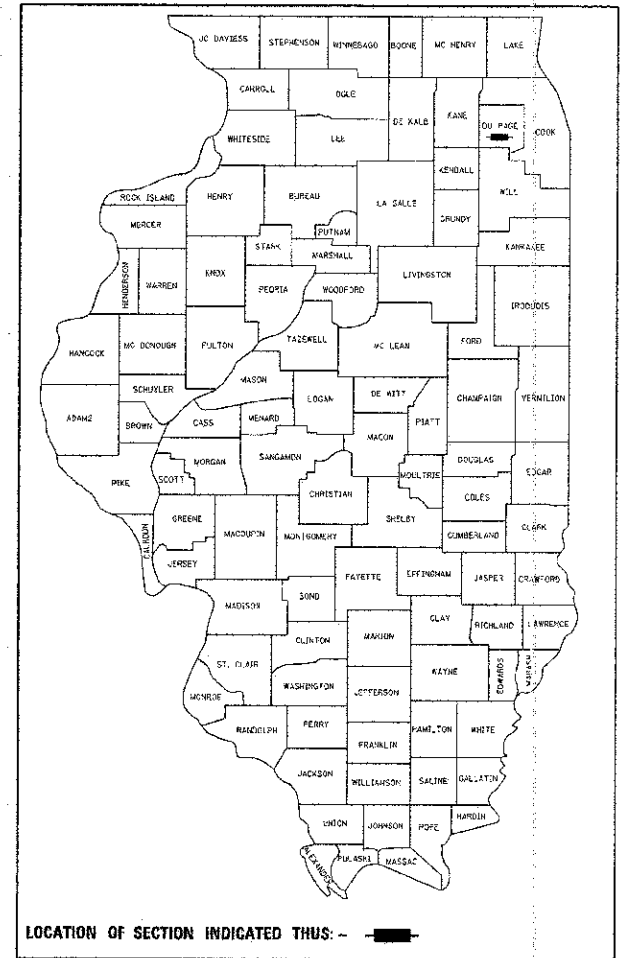
04-26-13 LETTING ITEM 059

STATE OF ILLINOIS  
DEPARTMENT OF TRANSPORTATION  
DIVISION OF HIGHWAYS  
**PLANS FOR PROPOSED  
FEDERAL AID HIGHWAY**  
FAU ROUTE 2543 (WINFIELD ROAD)  
OVER SPRING BROOK  
CULVERT REPLACEMENT  
SECTION: 10-00045-00-BR  
PROJECT NO. BRM-9003(738)  
VILLAGE OF WINFIELD  
DuPAGE COUNTY  
C-97-177-11

F.A. RTE.	SECTION	COUNTY	TOTAL SHEETS
2543	10-00045-00-BR	DUPAGE	16
		ILLINOIS	CONTRACT NO. 63812

**INDEX OF SHEETS**

NO.	DESCRIPTION
1	COVER SHEET
2	INDEX OF SHEETS, APPLICABLE HIGHWAY STANDARDS, GENERAL NOTES AND SUMMARY OF QUANTITIES
3	TYPICAL SECTIONS AND DETAILS
4	SCHEDULE OF QUANTITIES
5	ALIGNMENT TIES AND BENCHMARKS
6	WINFIELD ROAD PLAN AND PROFILE
7	DETOUR PLAN
8	EROSION AND SEDEMENTATION CONTROL NOTES
9	PLANTING PLAN EROSION AND SEDEMENTATION CONTROL PLAN
10	GENERAL PLAN AND ELEVATION
11	CULVERT DETAILS
12	CULVERT DETAILS
13	CULVERT DETAILS
14	SOIL BORING LOG
15	DISTRICT ONE TYPICAL PAVEMENT MARKINGS
16	BUTT JOINT AND HMA TAPER DETAILS



**REMPE-SHARPE**  
CONSULTING ENGINEERS  
IL P.D.P. LICENSE NO. 184-000395  
324 WEST STATE STREET - GENEVA, ILLINOIS 60134  
Telephone (830) 232-0827 - Fax (830) 232-1828



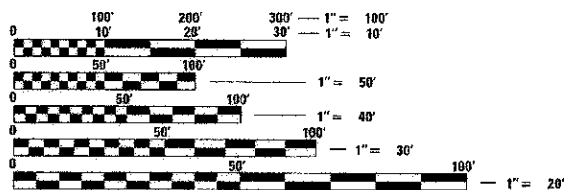
STATE OF ILLINOIS  
DEPARTMENT OF TRANSPORTATION  
DIVISION OF HIGHWAYS

APPROVED January 24 2013  
*Robert B. ...*  
VILLAGE OF WINFIELD

PASSED FEBRUARY 25 2013  
*C. J. Holt*  
DISTRICT ONE ENGINEER OF LOCAL ROADS AND STREETS

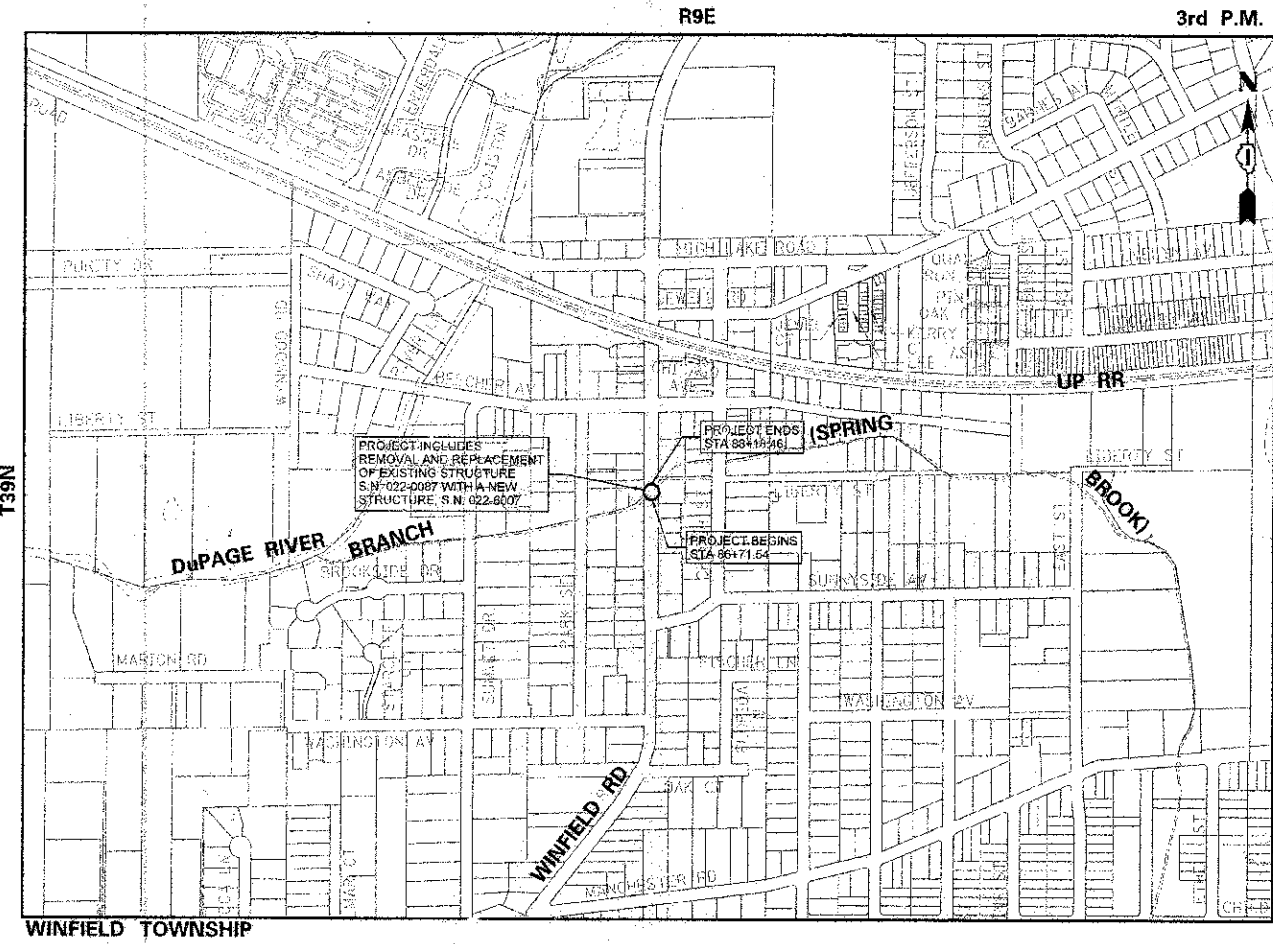
RELEASING FOR BID BASED ON LIMITED REVIEW February 27 2013  
*John Fortmann*  
DEPUTY DIRECTOR OF HIGHWAYS, REGION ONE ENGINEER

**TRAFFIC DATA**  
ADT (2012) = 9,600  
POSTED SPEED LIMIT = 30 MPH  
DESIGN SPEED = 35 MPH  
CLASSIFICATION = MINOR ARTERIAL



FULL SIZE PLANS HAVE BEEN PREPARED USING STANDARD ENGINEERING SCALES. REDUCED SIZED PLANS WILL NOT CONFORM TO STANDARD SCALES. IN MAKING MEASUREMENTS ON REDUCED PLANS, THE ABOVE SCALES MAY BE USED.

J.U.L.I.E.  
JOINT UTILITY LOCATION INFORMATION FOR EXCAVATION  
1-800-892-0123  
OR 811



GROSS LENGTH = 146.92 FT. = 0.03 MILE  
NET LENGTH = 146.92 FT. = 0.03 MILE

PROGRAM AND OFFICE ENGINEER: CHARLES F. RIDDLE, P.E. 847-705-4406 SCHAUMBURG, IL

CONTRACT NO. 63812

**PRINTED BY THE AUTHORITY  
OF THE STATE OF ILLINOIS**

**APPLICABLE IDOT HIGHWAY STANDARDS**

IDOT NO.	STANDARD DRAWINGS
000001-06	STANDARD SYMBOLS, ABBREVIATIONS AND PATTERNS
280001-07	TEMPORARY EROSION CONTROL SYSTEMS
420401-09	BRIDGE APPROACH PAVEMENT CONNECTOR
515001-03	NAME PLATE FOR BRIDGES
606001-05	CONCRETE CURB TYPE B AND COMBINATION CONCRETE CURB AND GUTTER
630001-10	STEEL PLATE BEAM GUARDRAIL
631046-04	TRAFFIC BARRIER TERMINAL TYPE 10
701901-02	TRAFFIC CONTROL DEVICES
780001-03	TYPICAL PAVEMENT MARKINGS
BLR23-4	TRAFFIC BARRIER TERMINAL TYPE 1

**SUMMARY OF QUANTITIES**

ITEM NO.	ITEM DESCRIPTION	UNIT	TOTAL	CONSTRUCTION TYPE	
				CODE	STP(01)
20100110	TREE REMOVAL (6 TO 15 UNITS DIAMETER)	UNIT	8		8
* 20101400	NITROGEN FERTILIZER NUTRIENT	POUND	13.6		13.6
* 20101500	PHOSPHOROUS FERTILIZER NUTRIENT	POUND	13.6		13.6
* 20101800	POTASSIUM FERTILIZER NUTRIENT	POUND	13.6		13.6
* 21101825	TOPSOIL FURNISH AND PLACE, 6"	SQ YD	705		705
* 25000110	SEEDING CLASS 1A	ACRE	0.14		0.14
* 25000300	SEEDING CLASS 3	ACRE	0.01		0.01
28000400	PERIMETER EROSION BARRIER	FOOT	80		80
28100107	STONE RIPRAP, CLASS A4	SQ YD	50		50
28200200	FILTER FABRIC	SQ YD	50		50
31101200	SUBBASE GRANULAR MATERIAL, TYPE B 4"	SQ YD	100		100
31101400	SUBBASE GRANULAR MATERIAL, TYPE B 6"	SQ YD	25		25
35101800	AGGREGATE BASE COURSE, TYPE B 4"	SQ YD	623		623
35101800	AGGREGATE BASE COURSE, TYPE B 6"	SQ YD	230		230
40600100	BITUMINOUS MATERIALS (PRIME COAT)	GALLON	70		70
40603080	HOT-MIX ASPHALT BINDER COURSE, IL-19.0, N60	TON	130		130
40803238	HOT-MIX ASPHALT SURFACE COURSE, MIX "D", H60	TON	40		40
42001155	BRIDGE APPROACH PAVEMENT	SQ YD	130		130
42001430	BRIDGE APPROACH PAVEMENT CONNECTOR (FLEXIBLE)	SQ YD	45		45
42400200	PORTLAND CEMENT CONCRETE SIDEWALK 6 INCH	SQ FT	495		495
44000100	PAVEMENT REMOVAL	SQ YD	435		435
44000161	HOT-MIX ASPHALT SURFACE REMOVAL, 3"	SQ YD	230		230
44000200	DRIVEWAY PAVEMENT REMOVAL	SQ YD	9		9
44000500	COMBINATION CURB AND GUTTER REMOVAL	FOOT	170		170
44000600	SIDEWALK REMOVAL	SQ FT	495		495
60100100	REMOVAL OF EXISTING STRUCTURES	EACH	1		1
90200450	REMOVAL AND DISPOSAL OF UNSUITABLE MATERIAL FOR STRUCTURES	CU YD	15		15
60300225	CONCRETE STRUCTURES	CU YD	44		44
60800205	REINFORCEMENT BARS, EPOXY COATED	POUND	88147		88147
* 60900105	ALUMINUM RAILING, TYPE L	FOOT	40		40
* 60900895	PEDESTRIAN RAILING	FOOT	55		55
61600100	NAME PLATES	EACH	1		1
64003000	CONCRETE BOX CULVERTS	CU YD	152		152
650A0380	STORM SEWERS, CLASS A, TYPE 2 15"	FOOT	23		23
650A0400	STORM SEWERS, CLASS A, TYPE 2 21"	FOOT	10		10
65100700	STORM SEWER REMOVAL 15"	FOOT	20		20
65101100	STORM SEWER REMOVAL 21"	FOOT	10		10
60605000	COMBINATION CONCRETE CURB AND GUTTER, TYPE B-8,24	FOOT	170		170
* 63000001	STEEL PLATE BEAM GUARDRAIL, TYPE A, 6 FOOT POSTS	FOOT	70		70
* 63100105	TRAFFIC BARRIER TERMINAL, TYPE 10	EACH	2		2
63200310	GUARDRAIL REMOVAL	FOOT	96		96
67100100	MOBILIZATION	L SUM	1		1
* 78000200	THERMOPLASTIC PAVEMENT MARKING - LINE 4"	FOOT	892		892
78000660	THERMOPLASTIC PAVEMENT MARKING - LINE 12"	FOOT	32		32
* 02001536	SHRUB, CORNUS RACEMOSA (BREW DOGWOOD), 3' HEIGHT, BALLED AND BURLAP	EACH	4		4
* 02005936	SHRUB, RHUS GLABRA (SMOOTH SUMAC), 3' HEIGHT, CONTAINER	EACH	4		4
* K0029634	WEED CONTROL, PRE-EMERGENT GRANULAR HERBICIDE	POUND	1		1
* LR831020	TRAFFIC BARRIER TERMINAL, TYPE 1	EACH	2		2
X0300616	CONCRETE WINGWALL REMOVAL	EACH	4		4
X0426200	DEWATERING	L SUM	1		1
X2070304	POROUS GRANULAR EMBANKMENT, SPECIAL	CU YD	15		15
X2511830	EROSION CONTROL BLANKET (SPECIAL)	SQ YD	705		705
X6440300	CHAIN LINK FENCE REMOVAL	FOOT	56		56
X7010216	TRAFFIC CONTROL AND PROTECTION (SPECIAL)	L SUM	1		1

**GENERAL NOTES**

**1. SPECIFICATIONS, STANDARDS AND SPECIAL PROVISIONS:**

ALL CONSTRUCTION SHALL BE PERFORMED IN ACCORDANCE WITH THE ILLINOIS DEPARTMENT OF TRANSPORTATION "STANDARD SPECIFICATIONS FOR ROAD AND BRIDGE CONSTRUCTION", ADOPTED JAN. 1, 2012 (HEREINAFTER REFERRED TO AS THE "STANDARD SPECIFICATIONS"); THE "SUPPLEMENTAL SPECIFICATIONS AND RECURRING SPECIAL PROVISIONS", ADOPTED JANUARY 1, 2013; THE LATEST EDITION OF THE "ILLINOIS MANUAL ON UNIFORM TRAFFIC CONTROL DEVICES FOR STREETS AND HIGHWAYS"; THE "DETAILS" ON THE PLANS AND THE "SPECIAL PROVISIONS" INCLUDED IN THE CONTRACT DOCUMENTS.

ANY REFERENCE TO STANDARDS THROUGHOUT THE PLANS OR SPECIAL PROVISIONS SHALL BE INTERPRETED AS THE LATEST STANDARD OF THE DEPARTMENT.

**2. PROTECTION OF PUBLIC/PRIVATE PROPERTY:**

THE CONTRACTOR SHALL PROTECT ALL EXISTING TREES TO REMAIN, SHRUBS, FENCES, DRAIN LINES, POWER LINES, AND OTHER PUBLIC/PRIVATE PROPERTY. ANY ITEM THAT IS DAMAGED SHALL BE REPLACED OR REPAIRED BY THE CONTRACTOR AS DIRECTED BY THE ENGINEER AT NO COST.

**3. EXISTING STREET CLEANLINESS:**

THE CONTRACTOR SHALL KEEP EXISTING AND ADJACENT STREETS CLEAN OF DIRT, MUD, AND OTHER DEBRIS AND, WHEN NECESSARY, CLEAN SAID PAVEMENTS ON A DAILY BASIS.

**4. REMOVAL, MAINTENANCE AND RESETTING EXISTING MAILBOXES, STREET SIGNS AND STOP SIGNS:**

EXISTING MAILBOXES, STREET SIGNS, AND STOP SIGNS WHICH INTERFERE WITH CONSTRUCTION SHALL BE REMOVED AND TEMPORARILY RELOCATED DURING CONSTRUCTION BY THE CONTRACTOR. AFTER THE WORK HAS BEEN SUBSTANTIALLY COMPLETED, SAID MAILBOXES AND SIGNS SHALL BE RESET AT A LOCATION SPECIFIED BY THE ENGINEER. THE COST OF THIS WORK SHALL BE CONSIDERED AS AN INCIDENTAL COST TO THE CONTRACT WITH NO ADDITIONAL COMPENSATION ALLOWED. ANY SIGN DAMAGED OR LOST SHALL BE REPLACED AT THE CONTRACTOR'S EXPENSE. TEMPORARY STOP SIGNS SHALL BE PLACED AS REQUIRED BY THE ENGINEER AS PART OF THE TRAFFIC CONTROL AND PROTECTION PAY ITEM.

**5. CONSTRUCTION LIMITS:**

THE CONTRACTOR SHALL CONFINE HIS OPERATIONS WITHIN THE DEDICATED ROADWAY RIGHT-OF-WAY OR EASEMENTS OBTAINED BY THE VILLAGE OF WINFIELD. ANY DAMAGE OUTSIDE OF SAID RIGHT-OF-WAY OR EASEMENTS SHALL BE REPAIRED AT THE CONTRACTOR'S EXPENSE.

**6. BARRICADES:**

THE CONTRACTOR SHALL PROVIDE AND INSTALL TWO (2) WEIGHTED SANDBAGS ON EACH TYPE I OR TYPE II BARRICADE USED, ONE (1) WEIGHTED SANDBAG ACROSS EACH RAIL.

**7. AS-BUILT PLANS:**

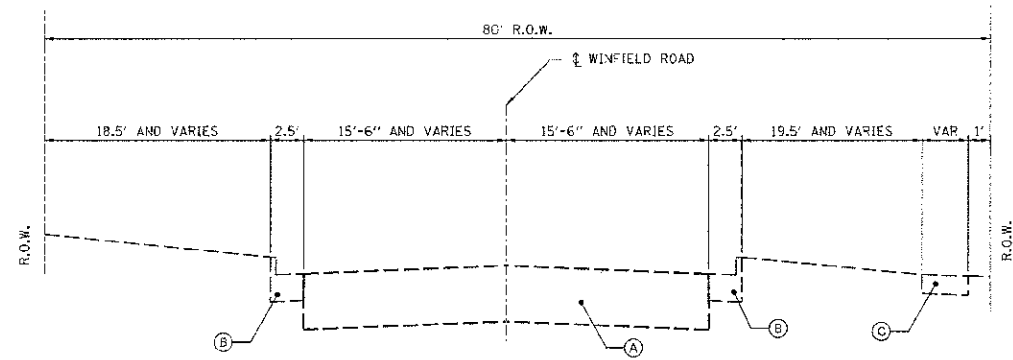
THE ILLINOIS DEPARTMENT OF TRANSPORTATION IS NOT THE OWNER OF RECORD FOR THIS BRIDGE. THOSE SEEKING HISTORIC AS-BUILT OR OTHER RECORD PLANS AND DOCUMENTS MUST CONTACT THE OWNER OF RECORD TO MAKE ARRANGEMENTS FOR ACCESS TO THIS INFORMATION.

**8. SOIL REPORT:**

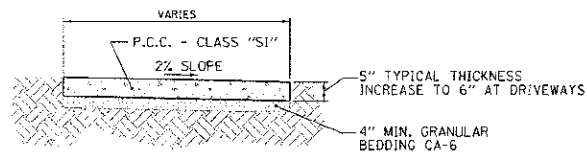
GEOTECHNICAL SOILS REPORTS AND OTHER ADVANCED PLANNING DOCUMENTS WERE PREPARED FOR THIS PROJECT AND ARE AVAILABLE FOR BIDDERS' REVIEW BY CONTACTING THE LEAD LOCAL AGENCY AT TELEPHONE NUMBER (630) 933-7100.

**\* SPECIALTY ITEMS**

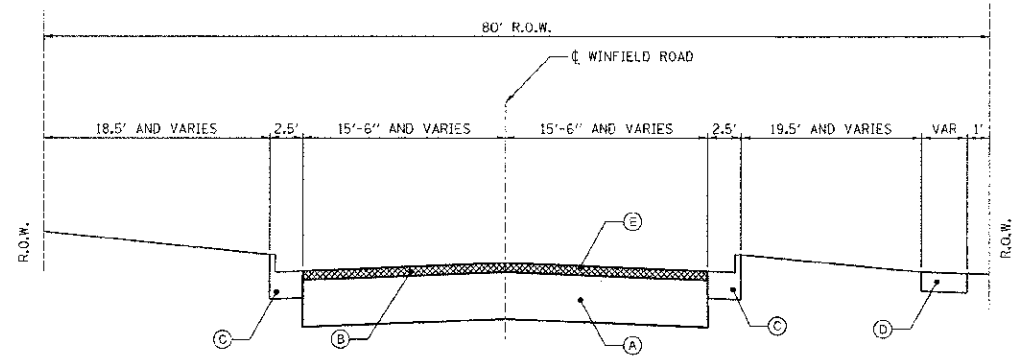
FILE NAME =	USER NAME = #USER#	DESIGNED - D.R.	REVISED -	<b>STATE OF ILLINOIS DEPARTMENT OF TRANSPORTATION</b>	<b>INDEX OF SHEETS, APPLICABLE HIGHWAY STANDARDS, GENERAL NOTES AND SUMMARY OF QUANTITIES</b>	F.A.D. RTE.	SECTION	COUNTY	TOTAL SHEETS	SHEET NO.
#FILE#		DRAWN - G.R.	REVISED -			2543	10-00045-00-BR	DuPAGE	16	2
		CHECKED - J.B.	REVISED -			SCALE: NONE		STA. 86+71.54 TO STA. 88+18.46	CONTRACT NO. 63812	
		DATE -	REVISED -	FED. ROAD DIST. NO. 1   ILLINOIS FED. AID PROJECT						



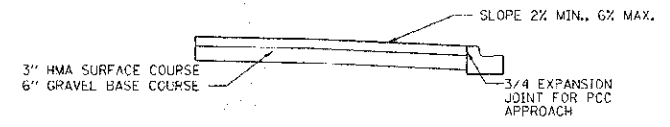
- EXISTING TYPICAL SECTION**  
 \*STA 86+71.54 TO STA 88+18.46, WINFIELD ROAD
- (A) EXISTING HOT-MIX ASPHALT PAVEMENT (12-INCH THICK)
  - (B) COMBINATION CONCRETE CURB AND GUTTER, TYPE-B6.24
  - (C) P.C.C. SIDEWALK, 5-INCH



- NOTES:**
1. THE ACTUAL WIDTH OF THE SIDEWALK IS TO BE PLUS 0" TO 1/2" OF THE WIDTH SPECIFIED.
  2. A 1/2" PREFORMED EXPANSION JOINT, CONFORMING TO THE EXACT CROSS-SECTION OF THE SIDEWALK, SHALL BE PLACED AT 50 FOOT INTERVALS AND AT THE END OF EACH POUR.
  3. CONTRACTION JOINTS SHALL BE PLACED AT 5 FOOT INTERVALS.
  4. THIS ITEM SHALL BE PAID FOR AT THE CONTRACT UNIT PRICE PER 50. FT. FOR P.C.C. SIDEWALK OF THE THICKNESS SPECIFIED WHICH SHALL BE FULL COMPENSATION FOR ALL LABOR AND MATERIAL REQUIRED INCLUDING THE EXPANSION AND CONTRACTION JOINTS AS SPECIFIED, AND ANY MINOR TOUCH-UP EXCAVATION AND BACKFILLING NECESSARY TO CONSTRUCT THE SIDEWALK.



- PROPOSED TYPICAL SECTION**  
 \*STA 86+71.54 TO STA 88+18.46, WINFIELD ROAD
- (A) H.M.A. BINDER COURSE, IL 19, N50 (9-INCH THICK)
  - (B) H.M.A. SURFACE REMOVAL (3-INCH THICK)
  - (C) COMBINATION CONCRETE CURB AND GUTTER, TYPE-B6.24, (REMOVE AND REPLACE PER PLANS)
  - (D) P.C.C. SIDEWALK, 5-INCH (REMOVE AND REPLACE PER PLANS)
  - (E) H.M.A. SURFACE COURSE, MIX D, N-50 (3-INCH THICK)



- NOTES:**
1. RESIDENTIAL DRIVEWAYS WIDTH AS MEASURED AT PROPERTY LINE: 10 MIN. AND 16' MAX.
  2. DRIVEWAY SHALL BE AS NEAR 90 DEGREES TO STREET AS SITE CONDITIONS PERMIT BUT NOT LESS THAN 60 DEGREES, IN NO CASE SHALL DRIVEWAY APPROACH FLARES CROSS AN ADJOINING LOT LINE EXTENDED.

**DRIVEWAY APPROACHES**

**HOT MIX ASPHALT MIXTURE REQUIREMENT**

ITEM	AIR VOIDS @ Ndes
<b>PAVEMENT RESURFACING</b>	
HOT-MIX ASPHALT SURFACE COURSE, MIX D, N50 (IL 9.5MM), 3"	4% @ 50 GYR
<b>FULL DEPTH PAVEMENT</b>	
HOT-MIX ASPHALT SURFACE COURSE, MIX D, N50 (IL 9.5MM), 3"	4% @ 50 GYR
HOT-MIX ASPHALT BINDER COURSE, IL 19.0, N50, 9" (IN 3 LIFTS)	4% @ 50 GYR
<b>DRIVEWAYS</b>	
HOT-MIX ASPHALT SURFACE COURSE, MIX D, N50 (IL 9.5MM), 3"	4% @ 50 GYR

NOTE:  
 THE UNIT WEIGHT USED TO CALCULATE ALL HMA SURFACE MIXTURE QUANTITIES IS 112#/CY-IN.  
 THE "AC TYPE" FOR POLYMERIZED HMA MIXES SHALL BE "SSS/SBR PG 76-22" AND FOR NON-POLYMERIZED HMA THE "AC TYPE" SHALL BE "PG 64-22" UNLESS MODIFIED BY DISTRICT ONE SPECIAL PROVISIONS.  
 FOR "PERCENT OF RAP" SEE SPECIAL PROVISIONS

\*HMA PAVEMENT OMISSION FROM STA 87+31.56 TO STA 87+58.51

FILE NAME =	USER NAME = #USER#	DESIGNED - D.R	REVISED -
#FILE#		DRAWN - G.R	REVISED -
	PLOT SCALE = #SCALE#	CHECKED - J.B	REVISED -
	PLOT DATE = #DATE#	DATE -	REVISED -

**STATE OF ILLINOIS  
 DEPARTMENT OF TRANSPORTATION**

**TYPICAL SECTIONS AND DETAILS**

SCALE: STA. 86+71.54 TO STA. 88+18.46

F.A.L. R.E.	SECTION	COUNTY	TOTAL SHEETS	SHEET NO.
2543	10-00045-00-BR	DUPAGE	16	3
CONTRACT NO. 63812			FED. ROAD DIST. NO. 1 ILLINOIS FED. AID PROJECT	

Striping			
Location	Lt/Rt	78000200	78000600
		Thermoplastic Pavement Marking - Line, 4"	Thermoplastic Pavement Marking - Line, 6"
		FOOT	FOOT
STA 86+71.54 to STA 88+18.46	Lt	147	
STA 86+71.54 to STA 88+18.46	Rt	147	
STA 86+71.54 to STA 88+18.46	Lt	294	
STA 86+71.54 to STA 88+18.46	Rt	294	
STA 86+71.54 to STA 88+18.46	Lt/Rt		32
Total		882	32

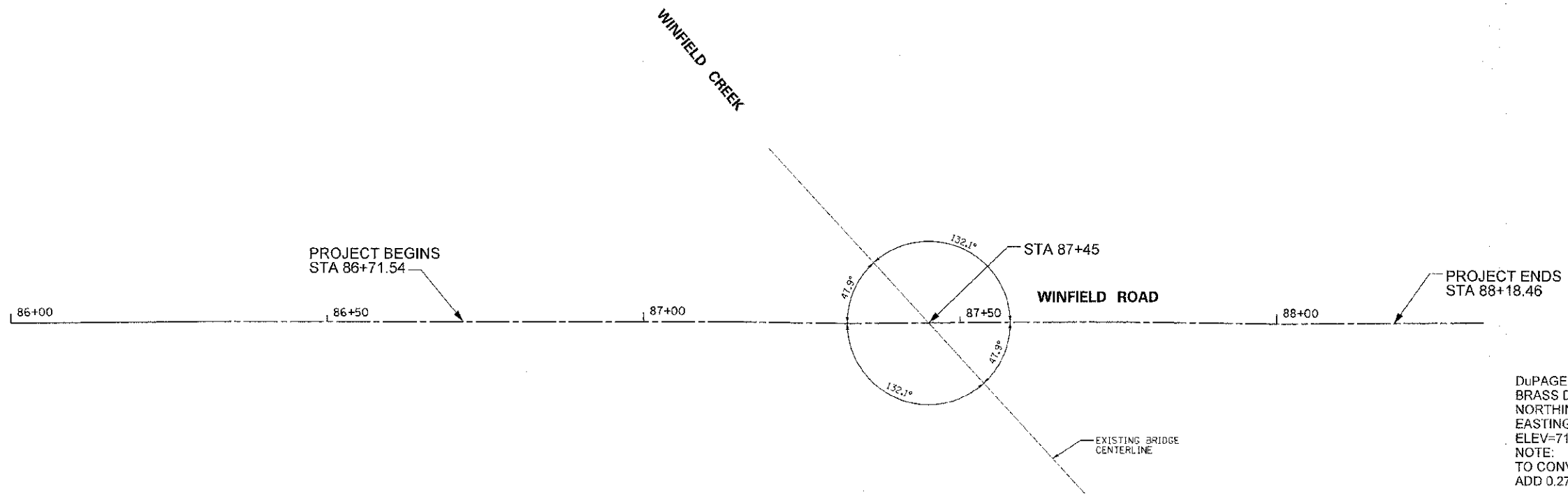
Storm Sewer					
Location	Lt/Rt	55100700	55101100	550A0360	550A0400
		Storm Sewer Removal, 15"	Storm Sewer Removal, 21"	Storm Sewers, Class A, Type 2, 15"	Storm Sewers, Class A, Type 2, 21"
		FOOT	FOOT	FOOT	FOOT
STA 87+50	Rt	10		10	
STA 87+85	Rt	10		13	
STA 87+10	Lt		10		10
Total		20	10	23	10

Guardrail						
Location	Lt/Rt	63000001	LR631020	63100105	60900105	63200310
		Steel Plate Beam Guardrail, Type A, 6' Posts	Traffic Barrier Terminal, Type 1	Traffic Barrier Terminal, Type 10	Aluminum Railing, Type L	Guardrail Removal
		FOOT	FOOT	FOOT	FOOT	FOOT
STA 87+00 to STA 87+50	Rt	50	1	1		65
STA 87+45 to STA 87+58	Lt	20	1	1		30
STA 87+48 to STA 87+76	Rt				20	
STA 88+20 to STA 88+47	Lt				20	
Total		70	2	2	40	95

Landscaping/Erosion Control									
Location	Lt/Rt	21101625	25000110	25000300	X2511650	29000400	20101400	20101500	20101600
		Topsoil Furnish and Place, 6"	Seeding, Class 1A	Seeding, Class 3	Erosion Control Blanket (Special)	Perimeter Erosion Barrier	Nitrogen Fertilizer Nutrient	Phosphorous Fertilizer Nutrient	Potassium Fertilizer Nutrient
		SQ YD	ACRE	ACRE	SQ YD	FOOT	POUND	POUND	POUND
STA 86+71.54 to STA 87+50	Rt	210	0.04		210	20	3.6	3.6	3.6
STA 87+85 to STA 88+18.46	Rt	85	0.01	0.01	85	25	1.8	1.8	1.8
STA 86+71.54 to STA 87+20	Lt	275	0.06		275	5	5.4	5.4	5.4
STA 87+35 to STA 88+18.46	Lt	135	0.03		135	10	2.7	2.7	2.7
Total		705	0.14	0.01	705	60	13.5	13.5	13.5

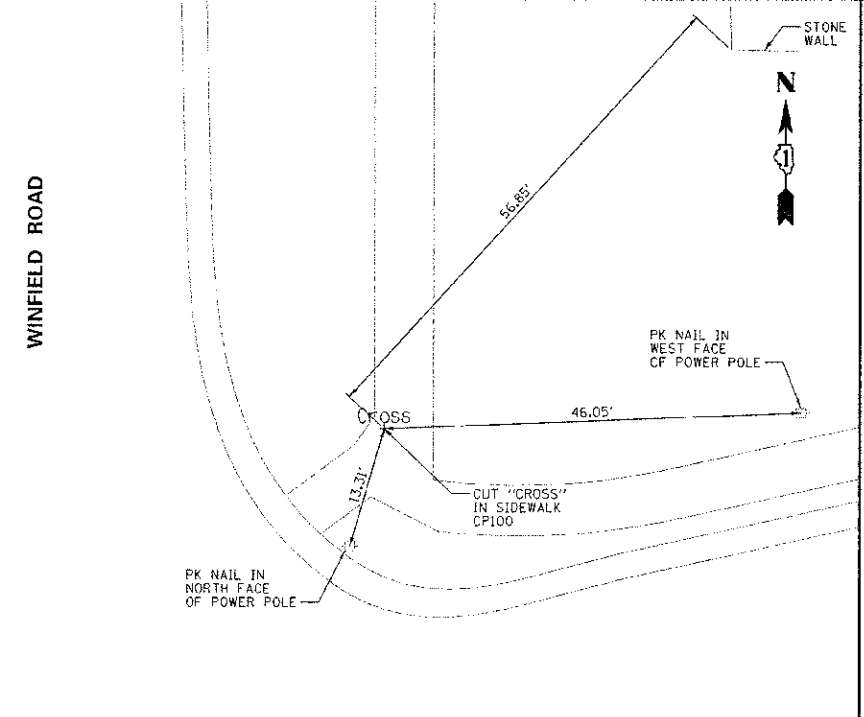
Pavement											
Location	Lt/Rt	40603310	40603060	40800100	42400300	44000600	44000100	35101800	35101600	60605000	44000500
		Hot-Mix Asphalt Surface Course, Mix "D", N60	Hot-Mix Asphalt Binder Course, IL-10.0, N60	Bituminous Materials Prime Coat	Portland Cement Concrete Sidewalk, 5"	Sidewalk Removal	Pavement Removal	Aggregate Base Course, Type B, 6"	Aggregate Base Course, Type B, 4"	Combination Concrete Curb and Gutter, Type B6.24	Combination Curb and Gutter Removal
		TON	TON	GALLON	SQ FT	SQ FT	SQ YD	SQ YD	SQ YD	FOOT	FOOT
STA 86+71.54 to STA 87+32	Lt/Rt	20	65	35	190	190	215	115	311	75	75
STA 87+38 to STA 88+18.46	Lt/Rt	20	65	35	305	305	220	115	312	95	95
Total		40	130	70	495	495	435	230	623	170	170

FILE NAME :	USER NAME = #USER#	DESIGNED - D.R	REVISED -	<b>STATE OF ILLINOIS DEPARTMENT OF TRANSPORTATION</b>	<b>SCHEDULE OF QUANTITIES</b>	F.A.D. R/F:	SECTION	COUNTY	TOTAL SHEETS	SHEET NO.	
#FILE#	PLOT SCALE = #SCALE#	DRAWN - G.R	REVISED -			2543	10-00045-00-BR	DuPAGE	16	4	
	PLOT DATE = #DATE#	CHECKED - J.B	REVISED -			CONTRACT NO. 63812					
		DATE -	REVISED -			SCALE:	STA. 86+71.54 TO STA. 88+18.46	FED. ROAD DIST. NO. 1 ILLINOIS FED. AID PROJECT			

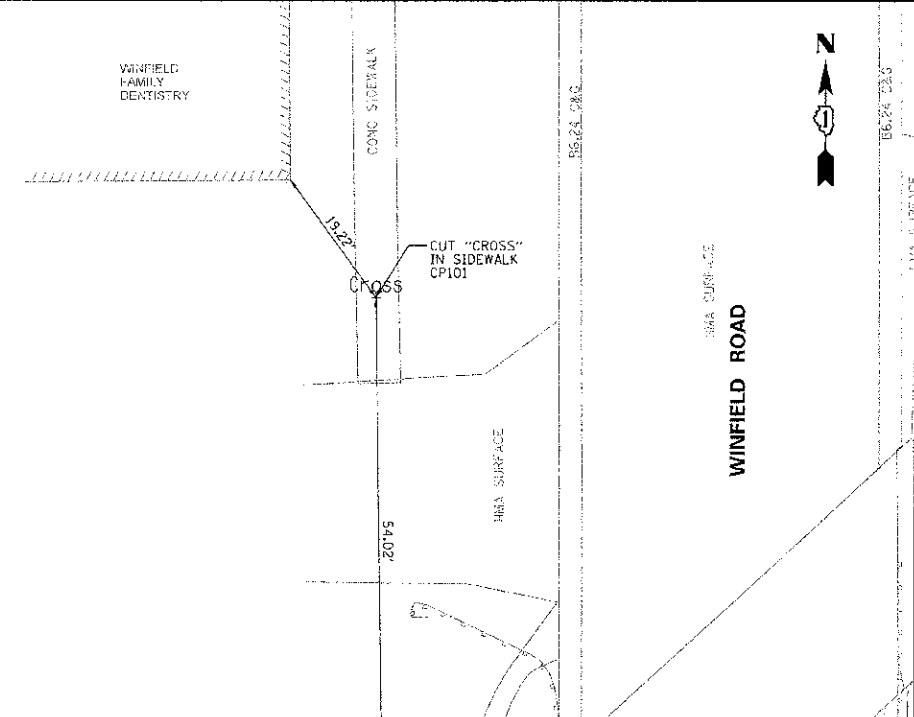


DUPAGE COUNTY BENCHMARK W13001  
 BRASS DISC  
 NORTHING: 1895757  
 EASTING: 1031019  
 ELEV=716.53 (NAVD88)  
 NOTE:  
 TO CONVERT PROJECT ELEVATIONS TO NAVD88 DATUM  
 ADD 0.2766 FEET TO PROJECT ELEVATIONS

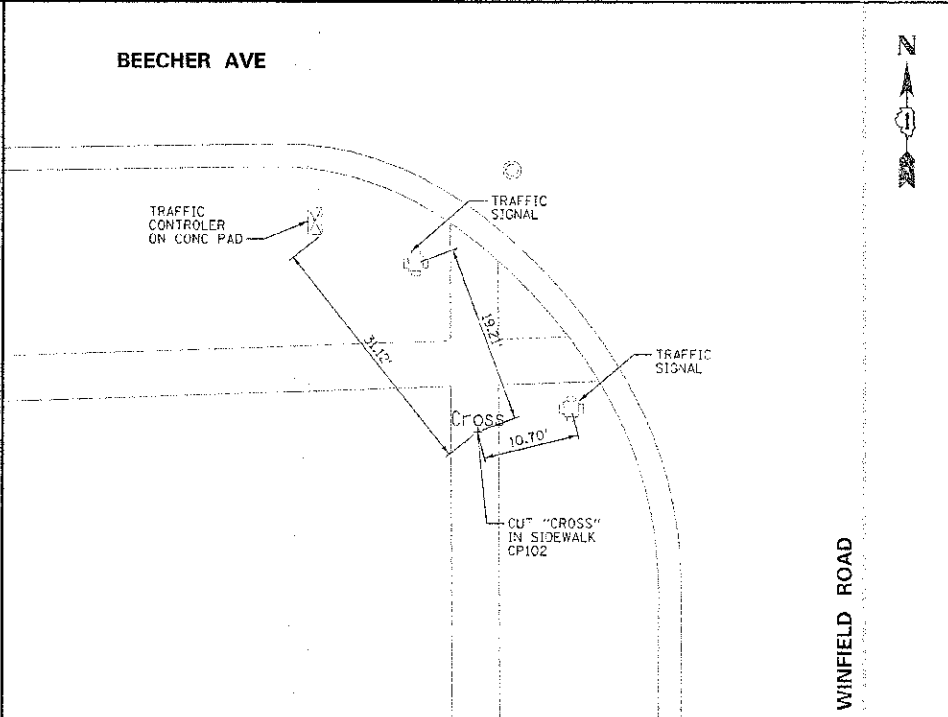
STATION IS LOCATED ON THE SOUTHWEST CORNER OF A  
 BRIDGE FOR HIGH LAKE ROAD OVER THE DUPAGE RIVER  
 WEST BRANCH. STATION IS 22.3 FT SOUTH OF THE CENTERLINE  
 OF HIGH LAKE ROAD, 415.0 FT EAST OF WINDERMERE ROAD, AND  
 280.0 FT WEST OF A DRIVEWAY TO THE 1-STORY BRAK BUILDING.  
 MONUMENT IS 0.9 FT ABOVE THE ROAD SURFACE AND IS NOT  
 FERROMAGNETIC. A CHAIN LINK FENCE PASSES OVER PART OF  
 THE POINT.



**SUNNYSIDE AVE**  
 CONTROL POINT 100  
 CUT "CROSS"  
 NORTHING: 1893765.552  
 EASTING: 1031949.470  
 ELEV=722.70



**CONTROL POINT 101**  
 CUT "CROSS"  
 NORTHING: 1894518.496  
 EASTING: 1031873.809  
 ELEV=715.18



**CONTROL POINT 102**  
 CUT "CROSS"  
 NORTHING: 1894901.449  
 EASTING: 1031374.787  
 ELEV=715.41

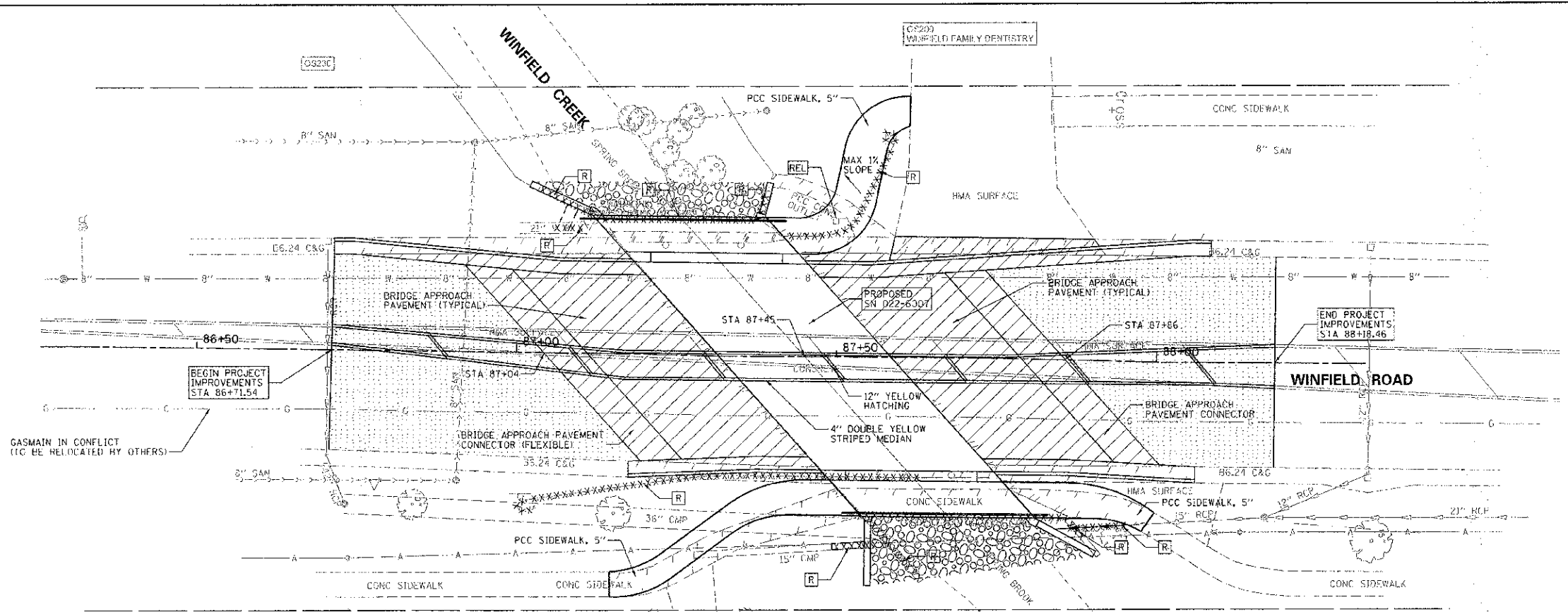
FILE NAME =	USER NAME = #USER#	DESIGNED - D.R	REVISED -
9F3LEL#		DRAWN - G.R	REVISED -
	PLOT SCALE = #SCALE#	CHECKED - J.B	REVISED -
	PLOT DATE = #DATE#	DATE -	REVISED -

**STATE OF ILLINOIS**  
**DEPARTMENT OF TRANSPORTATION**

**ALIGNMENT TIES AND BENCHMARK PLAN**

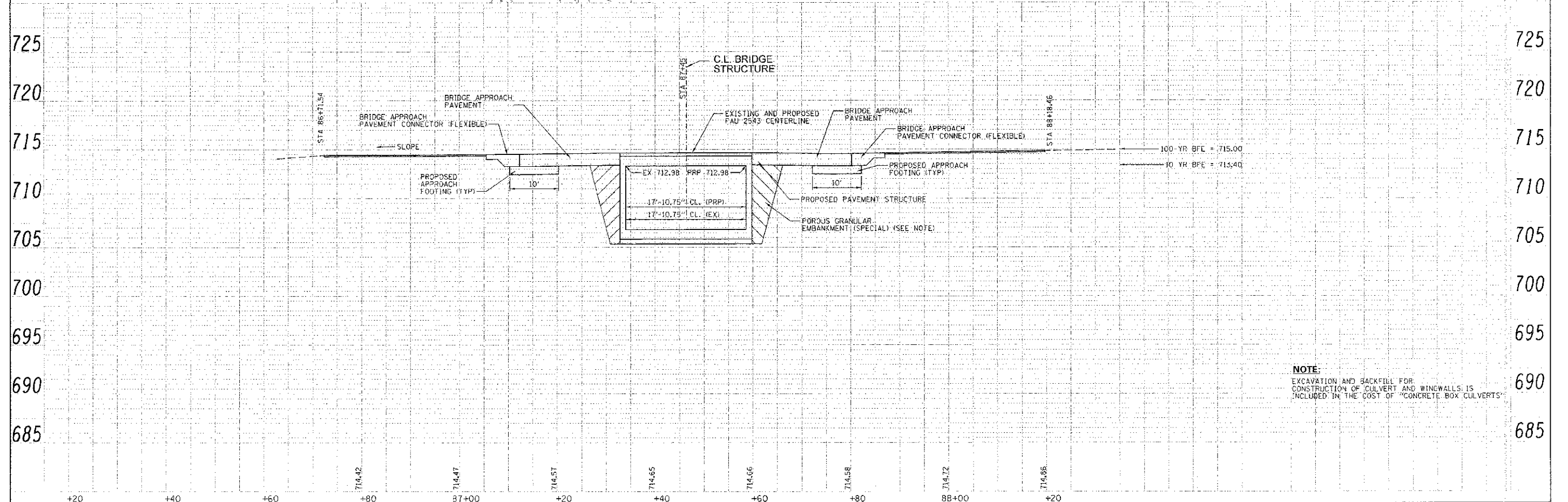
SCALE: 1"=10'  
 STA. 86+71.54 TO STA. 88+18.46

STATE	SECTION	COUNTY	TOTAL SHEETS
2543	10-00045-00-BR	DUPAGE	16
			5
CONTRACT NO. 63812			



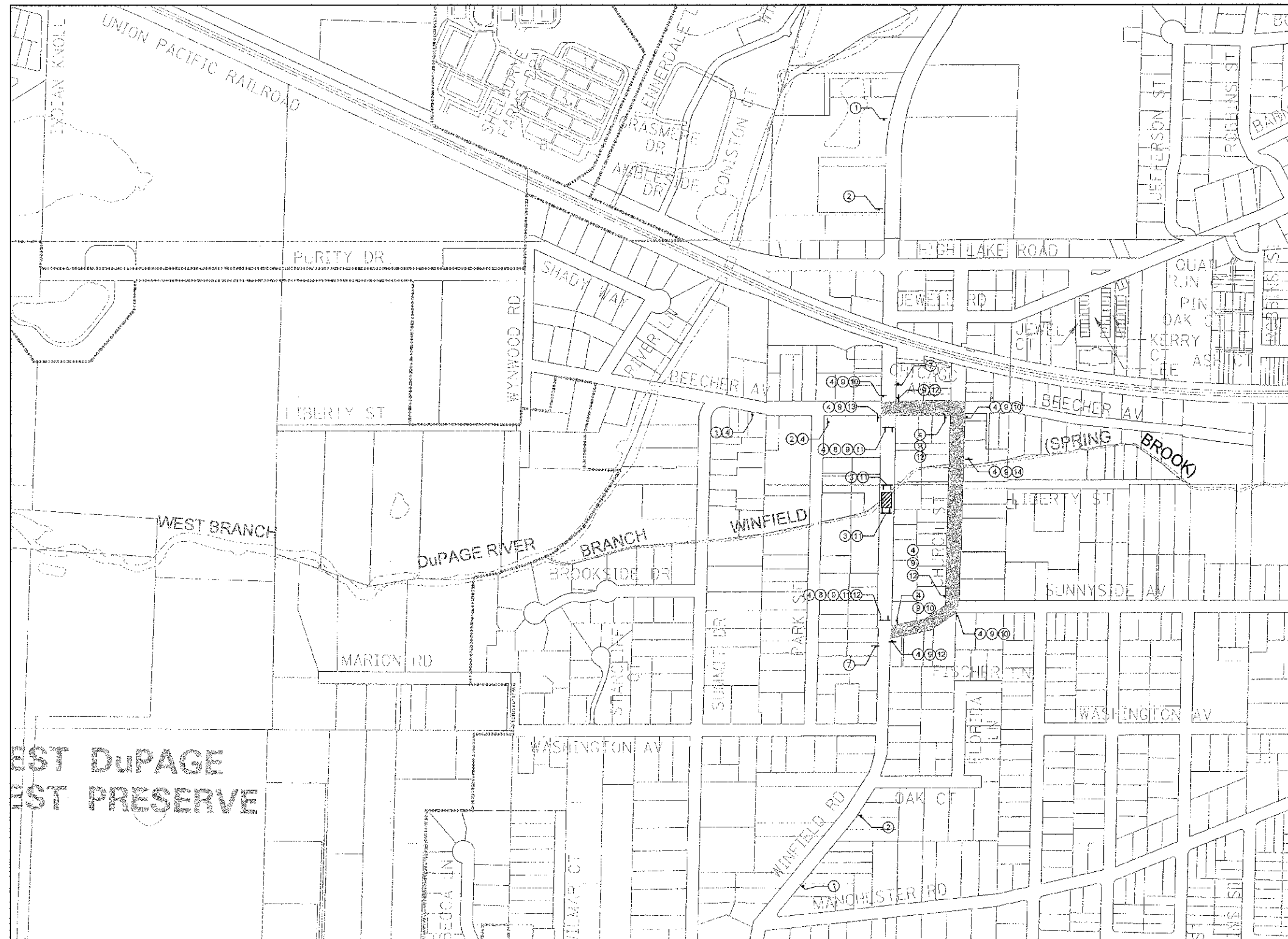
**LEGEND**

- PAVEMENT REMOVAL
- HMA SURFACE REMOVAL, 3"



**NOTE:**  
EXCAVATION AND BACKFILL FOR CONSTRUCTION OF CULVERT AND WINGWALLS IS INCLUDED IN THE COST OF "CONCRETE BOX CULVERTS"

FILE NAME - #FILE#	USER NAME - #USER#	DESIGNED - D.R.	REVISED -	<b>STATE OF ILLINOIS DEPARTMENT OF TRANSPORTATION</b>	<b>WINFIELD ROAD PLAN AND PROFILE</b>	F.A.U. RTE. 2543	SECTION 10-00045-00-BR	COUNTY	TOTAL SHEETS 6
	PLOT SCALE - #SCALE#	DRAWN - G.R.	REVISED -			DUPAGE	SHEET NO. 6		
	PLOT DATE - #DATE#	CHECKED - J.B.	REVISED -			CONTRACT NO. 63812			
		DATE -	REVISED -			STA. 86+71.54 TO STA. 88+18.46			



**LEGEND:**

- ① ROAD CLOSED A-HEAD W203
  - ② DETOUR AHEAD W202
  - ③ ROAD CLOSED R11-2 48" X 30"
  - ④ Winfield Road W17-1101 24" X 30"
  - ⑤ R3-1 24" X 24"
  - ⑥ R3-2 24" X 24"
  - ⑦ END DETOUR M4-8A 24" X 18"
  - ⑧ ROAD CLOSED TO THRU TRAFFIC R11-4 60" X 30"
  - ⑨ DETOUR W4-9 24" X 12"
  - ⑩ M6-1L 21" X 15"
  - ⑪ TYPE III BARRICADE
  - ⑫ M6-1R 21" X 15"
  - ⑬ M6-5 21" X 15"
  - ⑭ M5-1
- SIGN  
 ▬ TYPE III BARRICADE WITH AMBER FLASHING LIGHTS  
 ▨ WORK ZONE

**NOTES:**

1. EXISTING SIGNS WHICH CONFLICT WITH THE MARKED DETOUR SHALL BE COVERED. COST OF COVERING EXISTING SIGNS SHALL BE INCLUDED IN THE COST FOR TRAFFIC CONTROL AND PROTECTION FOR TEMPORARY DETOUR.
2. ALL SIGNS SHALL BE ORANGE WITH BLACK LETTERS.
3. SIGN PLACEMENT AND SPACING WILL BE AS DIRECTED BY THE RESIDENT ENGINEER.

FILE NAME - #FILE#	USER NAME - #USERS	DESIGNED - D.R	REVISED -	<b>STATE OF ILLINOIS DEPARTMENT OF TRANSPORTATION</b>	<b>DETOUR PLAN</b>	F.A.J. RTF. 2543	SECTION 10-00045-00-BR	COUNTY DUPAGE	TOTAL SHEETS 16	SHEET NO. 7
PLOT SCALE - #SCALE#	PLOT DATE - #DATES	DRAWN - G.R	REVISÉD -	SCALE: 1"=300'		STA. 86+71.54 TO STA. 88+18.46		CONTRACT NO. 63812		
		CHECKED - J.B	REVISÉD -			FED. ROAD DIST. NO. 1		ILLINOIS FED. AID PROJECT		
		DATE	REVISÉD -							

**GENERAL NOTES FOR SOIL EROSION CONTROL**

IT IS THE RESPONSIBILITY OF THE GENERAL CONTRACTOR TO INFORM ANY SUB-CONTRACTORS WHO MAY PERFORM WORK ON THIS PROJECT OF THE REQUIREMENTS IN IMPLEMENTING AND MAINTAINING THESE EROSION CONTROL PLANS AND THE NATIONAL POLLUTANT DISCHARGE ELIMINATION SYSTEM (NPDES) PERMIT REQUIREMENTS SET FOR BY THE ILLINOIS EPA.

EROSION CONTROL MEASURES SHALL MEET ALL REQUIREMENTS OF THE COUNTY AND THE ENVIRONMENTAL PROTECTION AGENCY, N.P.D.E.S. PERMIT CONSTRUCTION SITE ACTIVITIES.

UNLESS OTHERWISE INDICATED, ALL VEGETATIVE AND STRUCTURAL EROSION AND SEDIMENT CONTROL PRACTICES WILL BE CONSTRUCTED ACCORDING TO MINIMUM STANDARDS AND SPECIFICATIONS IN THE ILLINOIS URBAN MANUAL LATEST EDITION.

A COPY OF THE APPROVED EROSION AND SEDIMENT CONTROL PLAN SHALL BE MAINTAINED ON THE SITE AT ALL TIMES.

PRIOR TO COMMENCING LAND -DISTURBING ACTIVITIES IN AREAS OTHER THAN INDICATED ON THESE PLANS (INCLUDING BUT NOT LIMITED TO OFF-SITE BORROW OR WASTE AREAS) A SUPPLEMENTARY EROSION CONTROL PLAN SHALL BE SUBMITTED TO THE OWNER FOR REVIEW.

THE CONTRACTOR IS RESPONSIBLE FOR INSTALLATION OF ANY ADDITIONAL EROSION CONTROL MEASURES NECESSARY TO PREVENT EROSION AND SEDIMENTATION AS DETERMINED BY THE COUNTY.

IN AREAS WHERE WORK IS COMPLETE, PERMANENT STABILIZATION SHALL OCCUR WITHIN 7 DAYS OF COMPLETION, AND IN AREAS WHERE WORK HAS TEMPORARILY CEASED FOR 21 DAYS OR MORE, TEMPORARY STABILIZATION SHALL OCCUR BY THE 14TH DAY AFTER WORK HAS CEASED. TEMPORARY SEEDING SHALL BE IDOT CLASS I & PERMANENT SEEDING SHALL BE IDOT CLASS I AND FERTILIZERS.

PROPERTIES ADJACENT TO SITE OF A LAND DISTURBANCE SHOULD BE PROTECTED FROM SEDIMENT DEPOSITION. THIS MAY BE ACCOMPLISHED BY PERIMETER CONTROLS SUCH AS FILTER FENCE OR DIKES, OR OTHER APPROVED MEASURES.

EROSION CONTROL MEASURES MUST BE CONSTRUCTED AS A FIRST STEP IN GRADING AND BE MADE FUNCTIONAL BEFORE UP SLOPE LAND DISTURBANCE TAKES PLACE.

ALL STORM SEWER INLETS WHICH ARE MADE OPERABLE DURING CONSTRUCTION SHALL BE PROTECTED BY EITHER AREA DRAIN PROTECTION, DIKE IN GRADED AREAS, OR BY WRAPPING FILTER FABRIC AROUND THE GRATE IN PAVED AREAS, INCLUDED IN COST OF NEW STRUCTURES, AND INCIDENTAL IN EXISTING STRUCTURES.

WHEN EVER CONSTRUCTION VEHICLE ACCESS ROUTES INTERSECT PAVED ROADS, PROVISIONS SHALL BE MADE TO MINIMIZE THE TRANSPORT OF SEDIMENT (MUD) BY RUNOFF OR VEHICLE TRACKING ONTO THE PAVED SURFACE.

ALL TEMPORARY EROSION AND SEDIMENT CONTROL MEASURES SHOULD BE DISPOSED OF WITHIN 30 DAYS AFTER FINAL SITE STABILIZATION IS ACHIEVED OR AFTER THE TEMPORARY MEASURES ARE NO LONGER NEEDED. TRAPPED SEDIMENT AND OTHER DISTURBED SOIL AREAS RESULTING FROM THE DISPOSITION OF TEMPORARY MEASURES SHALL BE PERMANENTLY STABILIZED TO PREVENT FURTHER EROSION AND SEDIMENTATION.

ALL TEMPORARY AND PERMANENT EROSION AND SEDIMENT CONTROL MEASURES SHALL BE MAINTAINED AND REPAIRED AS NEEDED TO ASSURE CONTINUED PERFORMANCE OF THEIR INTENDED FUNCTION.

THE CONTRACTOR SHALL BE RESPONSIBLE FOR THE REMOVAL AND RESPREADING OF ANY MATERIAL THAT IS DEPOSITED OFF-SITE.

ALL EROSION CONTROL MEASURES MUST BE INSPECTED WEEKLY & AFTER EACH 1/2" RAIN EVENT. INSPECTION AND MAINTENANCE RECORDS ARE REQUIRED TO BE KEPT ONSITE BY THE CONTRACTOR.

ALL ADJACENT STREETS MUST BE KEPT CLEAR OF DEBRIS, INSPECTED DAILY & CLEANED WHEN NECESSARY.

WINTER SHUT DOWN SHALL BE ADDRESSED EARLY IN THE FALL GROWING SEASON SO THAT SLOPES AND OTHER BARE EARTH AREAS MAY BE STABILIZED WITH TEMPORARY AND/OR PERMANENT VEGETATIVE COVER FOR PROPER EROSION AND SEDIMENT CONTROL

FILE NAME =	USER NAME = #USER#	DESIGNED - D.R	REVISED -	<b>STATE OF ILLINOIS DEPARTMENT OF TRANSPORTATION</b>	<b>EROSION AND SEDIMENTATION CONTROL NOTES</b>	F.A.U. RTE#	SECTION	COUNTY	TOTAL SHEETS	SHEET NO.	
#FILE#		DRAWN - G.R	REVISED -			2543	10-00045-00-BR	DUPAGE	16	8	
	PLOT SCALE = #SCALE#	CHECKED - J.B	REVISED -			SCALE:		STA. 86+71.54 TO STA. 88+18.46		FED. ROAD DIST. NO. 1 ILLINOIS FED. AID PROJECT	
	PLOT DATE = #DATE#	DATE -	REVISED -					CONTRACT NO. 63812			



**PLANTING AND SEEDING NOTES:**

INSTALL SHRUBS PER AN21 STANDARDS AS SHOWN ON THE PLANS. SHRUBS SHALL BE WATERED IMMEDIATELY AND THEN AS OFTEN AS NECESSARY DURING THE GROWING SEASON TO ENSURE SURVIVAL.

SHRUBS SHALL BE 3-4 FEET TALL, BALLED AND BURLAPPED OR CONTAINER GROWN.

ALL DISTURBED AREAS SHALL BE RESTORED W/6" OF TOPSOIL, SEEDED AND BLANKETED ACCORDING TO THE RATES AND TYPE SPECIFIED ON THE PLANS.

CONTRACTOR SHALL PROVIDE MONITORING AND MAINTENANCE OF THE LANDSCAPING FOR A MINIMUM OF 1 YEAR OR AS NECESSARY AT NO ADDITIONAL COST UNTIL THE PROJECT MEETS PERFORMANCE STANDARDS.

PERFORMANCE STANDARDS (1-YEAR MONITORING PERIOD): AT THE END OF THE FIRST GROWING SEASON AND ONE FULL YEAR AFTER PLANTING, 100% OF THE SHRUBS WILL BE PRESENT AND THRIVING, AND NO MORE THAN 0.5 SQUARE METERS IN SIZE SHALL BE DEVOID OF VEGETATION.

**DEWATERING AND CREEK ISOLATION:**

CONSTRUCTION IN THE CREEK SHALL ONLY BE CONDUCTED DURING NO OR LOW FLOW CONDITIONS.

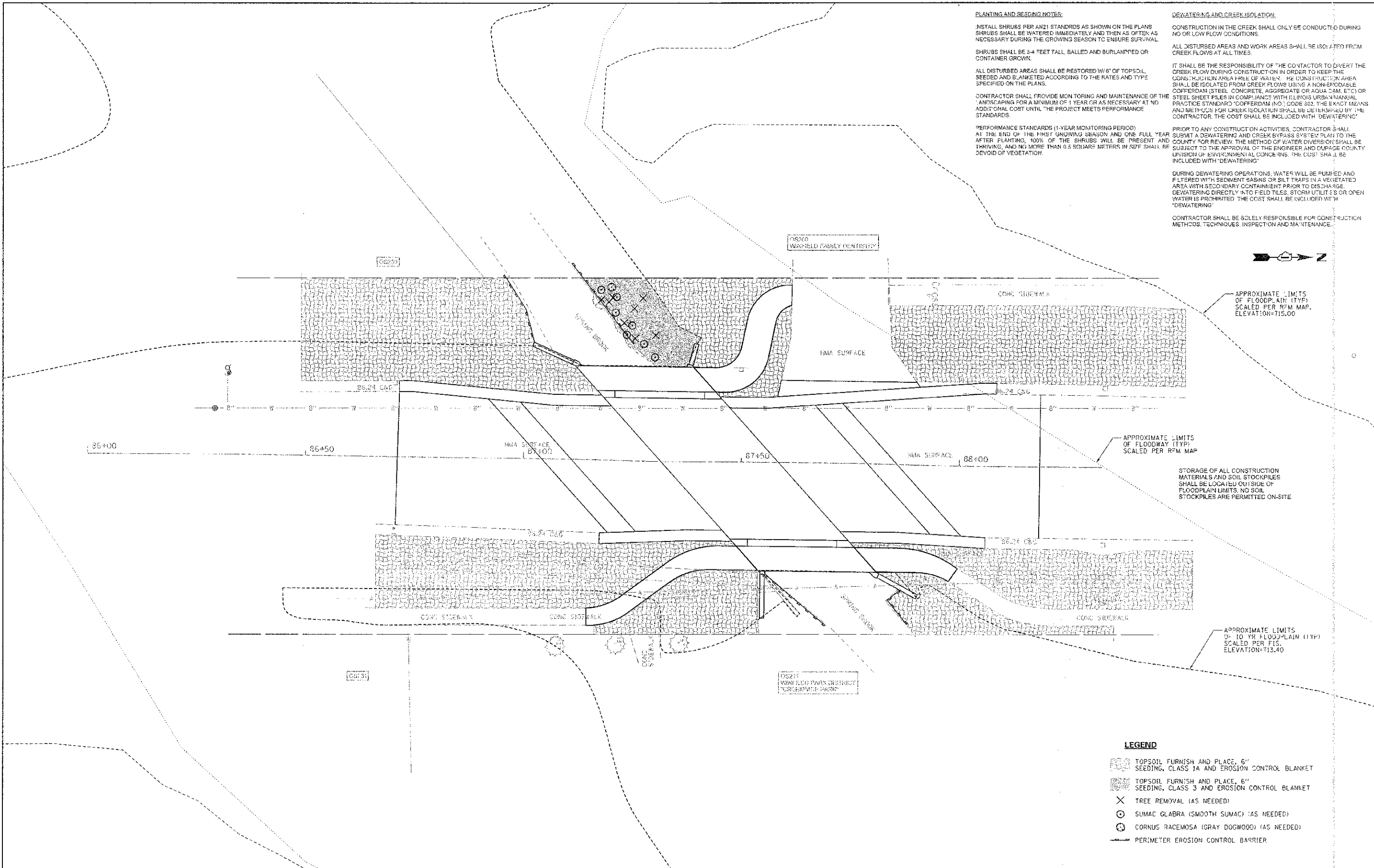
ALL DISTURBED AREAS AND WORK AREAS SHALL BE ISOLATED FROM CREEK FLOWS AT ALL TIMES.

IT SHALL BE THE RESPONSIBILITY OF THE CONTRACTOR TO DIVERT THE CREEK FLOW DURING CONSTRUCTION IN ORDER TO KEEP THE CONSTRUCTION AREA FREE OF WATER. THE CONSTRUCTION AREA SHALL BE ISOLATED FROM CREEK FLOWS USING A NON-FLOODABLE COFFERDAM (STEEL, CONCRETE, AGGREGATE OR AQUA DAM, ETC) OR STEEL SHEET PILES IN COMPLIANCE WITH ILLINOIS URBA-NRMANUAL PRACTICE STANDARD "COFFERDAM (NO. 303, THE EXACT MEANS AND METHODS FOR CREEK ISOLATION SHALL BE DETERMINED BY THE CONTRACTOR. THE COST SHALL BE INCLUDED WITH "DEWATERING".

PRIOR TO ANY CONSTRUCTION ACTIVITIES, CONTRACTOR SHALL SUBMIT A DEWATERING AND CREEK BYPASS SYSTEM PLAN TO THE COUNTY FOR REVIEW. THE METHOD OF WATER DIVERSION SHALL BE SUBJECT TO THE APPROVAL OF THE ENGINEER AND DUPAGE COUNTY DIVISION OF ENVIRONMENTAL CONCERNS. THE COST SHALL BE INCLUDED WITH "DEWATERING".

DURING DEWATERING OPERATIONS, WATERS WILL BE PUMPED AND FILTERED WITH SEDIMENT BASINS OR SILT TRAPS IN A VEGETATED AREA WITH SECONDARY CONTAINMENT PRIOR TO DISCHARGE. DEWATERING DIRECTLY INTO FIELD TILES, STORM UTILITIES OR OPEN WATER IS PROHIBITED. THE COST SHALL BE INCLUDED WITH "DEWATERING".

CONTRACTOR SHALL BE SOLELY RESPONSIBLE FOR CONSTRUCTION METHODS, TECHNIQUES, INSPECTION AND MAINTENANCE.



**LEGEND**

- TOPSOIL FURNISH AND PLACE, 6" SEEDING, CLASS 1A AND EROSION CONTROL BLANKET
- TOPSOIL FURNISH AND PLACE, 6" SEEDING, CLASS 3 AND EROSION CONTROL BLANKET
- TREE REMOVAL (AS NEEDED)
- SUMAC GLABRA (SMOOTH SUMAC) (AS NEEDED)
- CORNUS RACEMOSA (GRAY DOGWOOD) (AS NEEDED)
- PERIMETER EROSION CONTROL BARRIER

FILE NAME =	USER NAME = #USER#	DESIGNED - D.R.	REVISED -
#FILE#		DRAWN - G.R.	REVISED -
	PLT SCALE = #SCALE#	CHECKED - J.3	REVISED -
	PLT DATE = #DATE#	DATE -	REVISED -

**STATE OF ILLINOIS  
DEPARTMENT OF TRANSPORTATION**

**PLANTING PLAN  
EROSION AND SEDIMENTATION  
CONTROL PLAN**

SCALE: 1"=10'

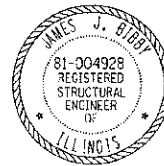
STA. 86+71.54 TO STA. 88+18.46

F.A.U. NO.	SECTION	COUNTY	TOTAL SHEETS	SHEET NO.
2543	10-00045-00-BR	DUPAGE	16	9
FED. ROAD DIST. NO. 1 ILLINOIS FED. AID PROJECT			CONTRACT NO. 63812	

NOTE:  
SEE ALIGNMENT TIES AND BENCHMARKS  
SHEET FOR BENCHMARK INFORMATION.

**BILL OF MATERIAL**

ITEM	UNIT	TOTAL
POROUS GRANULAR EMBANKMENT	CU YD	15
STONE RIPRAP, CLASS A4	50 YD	50
FILTER FABRIC	50 YD	50
REMOVAL OF EXISTING STRUCTURES	EACH	1
REMOVAL AND DISPOSAL OF UNSUITABLE MATERIAL FOR STRUCTURES	CU YD	15
REINFORCEMENT BARS EPOXY COATED	POUND	83,288
NAME PLATES	EACH	1
CONCRETE BOX CULVERTS	CU YD	152



"I certify that to the best of my knowledge, information and belief, this bridge is structurally adequate for the design loading shown on the plans. The design is an economical one for the style of structure and complies with requirements of the current AASHTO Standard Specifications for Highway Bridges."

JAMES J. BIBBY  
ILLINOIS REGISTERED STRUCTURAL ENGINEER  
NO. 081-004928 EXPIRES 11-30-14

**WATERWAY INFORMATION**

Drainage Area = 8.65 Sq. Mi.

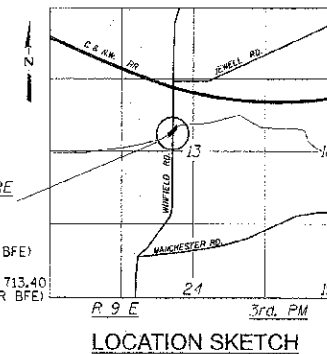
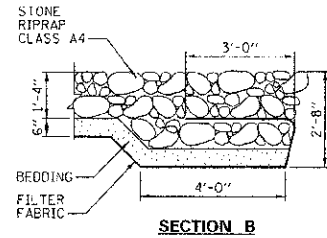
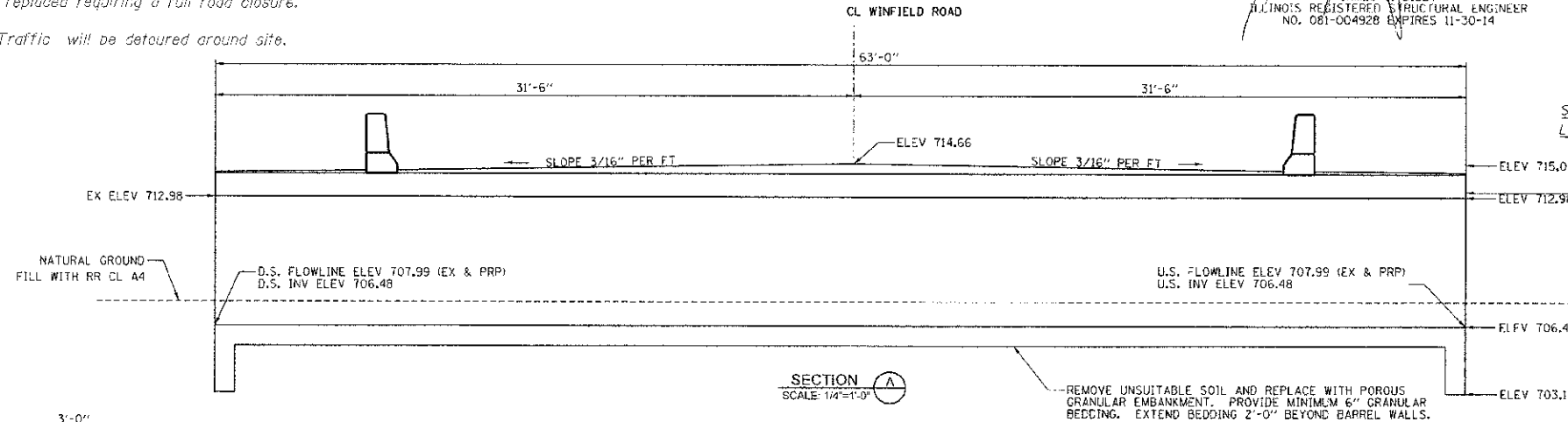
Flood	Frq. Yr.	C.F.S.	0	Opening	Sq. Ft.	Nat. Prop.	Head - Ft.	Headwater El.
Design	50	655	74	74	714.39	0.53	0.53	714.92
Base	100	755	74	74	714.52	0.44	0.44	715.06
Overtopping	50	655	74	74	714.39	0.53	0.53	714.92
Max. Calc.	500	1065	74	74	715.11	0.29	0.29	715.40

**EXISTING STRUCTURE**

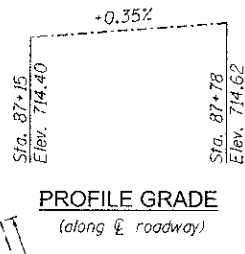
S.N. 022-0067 - First constructed in the 1920's, this bridge consists of a one span (26'-0") reinforced concrete slab on slab abutments over Winfield Creek. Entire existing structure shall be removed and replaced requiring a full road closure.

Road will be closed. Traffic will be detoured around site.

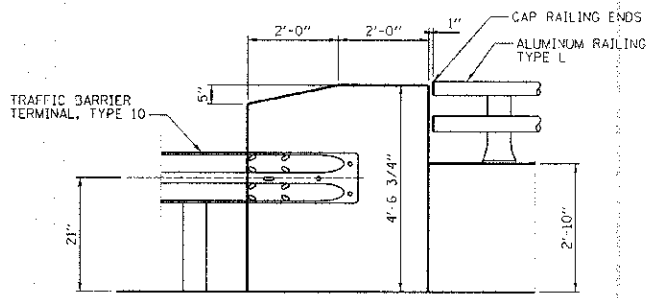
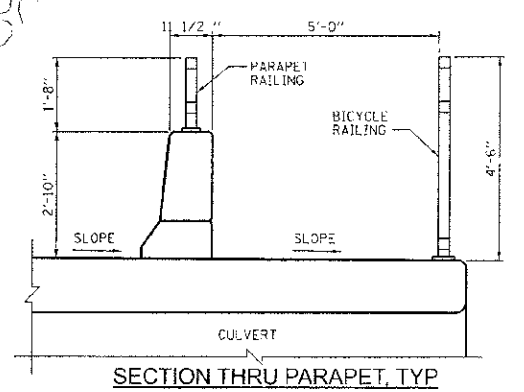
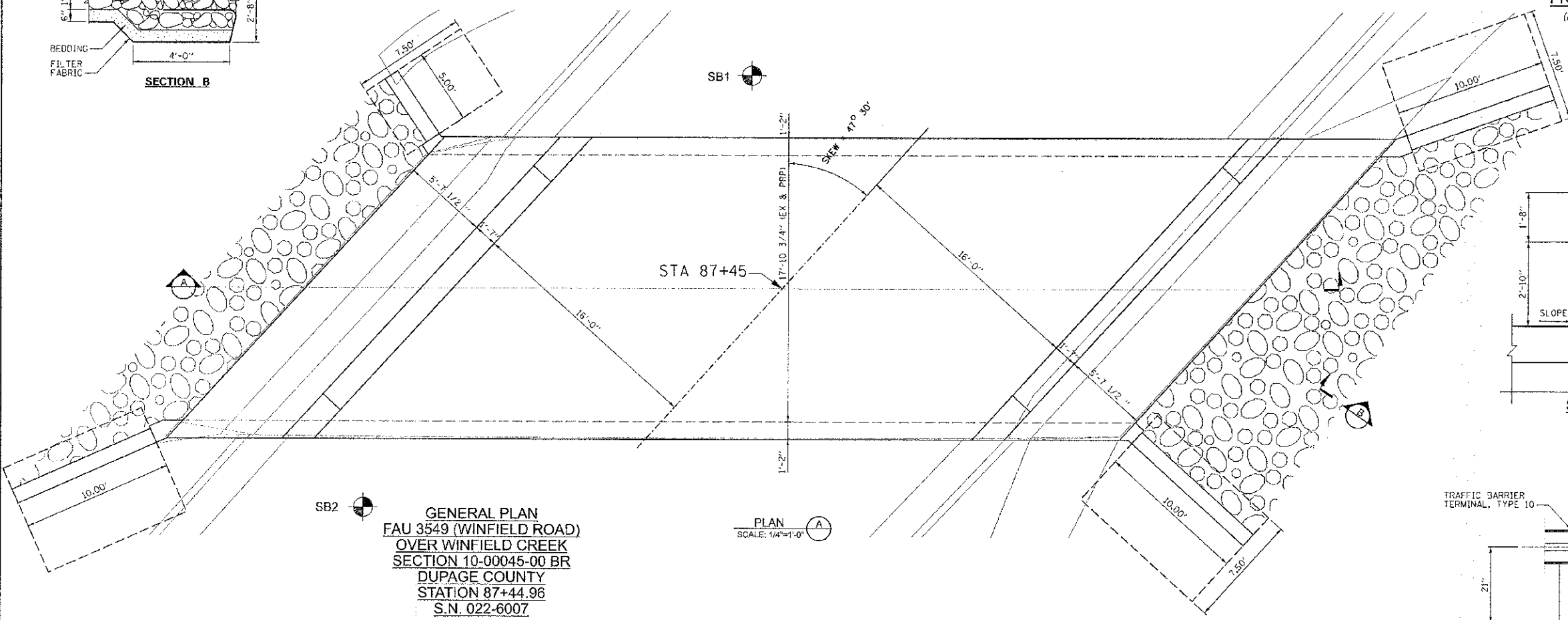
Salvage: None



**LOADING HL-93**  
Allow 50# / sq. ft. for future wearing surface.  
**DESIGN SPECIFICATIONS**  
2007 AASHTO LRFD Bridge Design Specifications with 2008 & 2009 Interims  
**DESIGN STRESSES**  
FIELD UNITS  
f<sub>c</sub> = 5,000 psi  
f<sub>y</sub> = 60,000 psi (reinforcement)

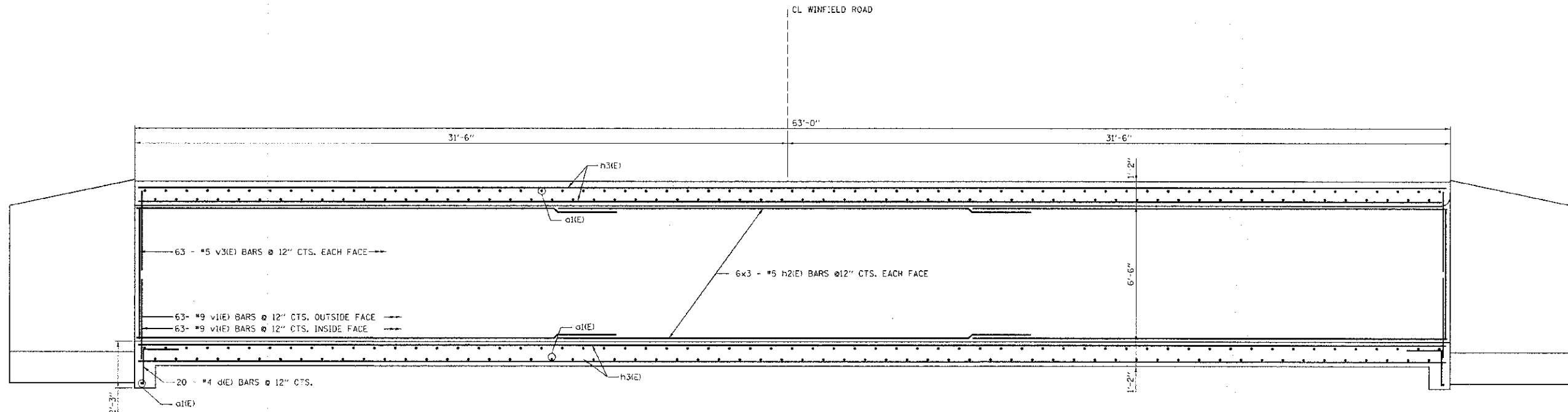


**WINFIELD CREEK**  
BUILT 2013 BY  
VILLAGE OF WINFIELD  
F.A.S. RT. 3549  
SEC. 10-00045-00-BR  
LOADING HL-93  
STR. NO. 022-6007  
**NAME PLATE**  
See Std. 515001

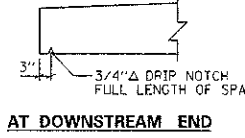
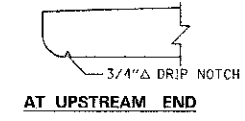


FILE NAME =	USER NAME = #USER#	DESIGNED - D.R.	REVISED -	STATE OF ILLINOIS DEPARTMENT OF TRANSPORTATION	GENERAL PLAN AND ELEVATION STRUCTURE NO. 022-6007	SECTION 10-00045-00-BR	COUNTY DUPAGE	TOTAL SHEETS 15	SHEET NO. 10
BPFILE#	PLOT SCALE = #SCALE#	DRAWN - G.R.	REVISED -						
	PLOT DATE = #DATE#	CHECKED - J.B.	REVISED -						
		DATE -	REVISED -						

SCALE: STA. 86+71.54 TO STA. 88+18.46  
FED. ROAD DIST. NO. 1 ILLINOIS FED. AID PROJECT

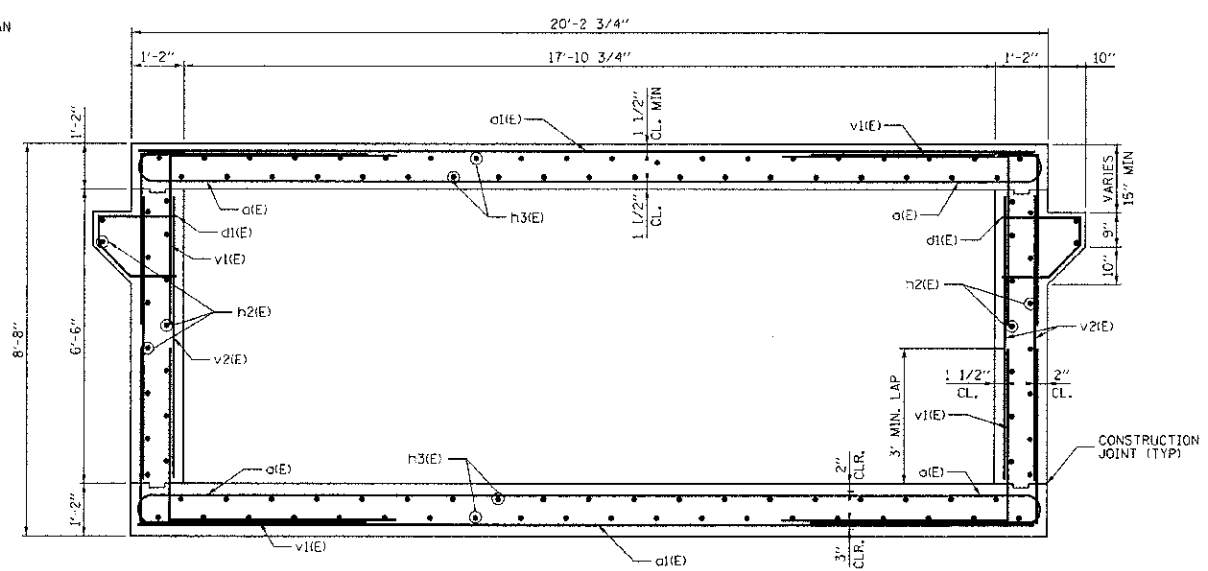


Bar	No.	Size	Length	Shape
a(E)	4	#9	30'-11"	U
a(E)	12	#9	30'-8"	U
a(E)	4	#9	30'-5"	U
a(E)	4	#9	30'-1"	U
a(E)	4	#9	29'-10"	U
a(E)	4	#9	29'-7"	U
a(E)	4	#9	29'-4"	U
a(E)	4	#9	29'-1"	U
a(E)	4	#9	28'-10"	U
a(E)	4	#9	28'-7"	U
a(E)	4	#9	28'-4"	U
a(E)	4	#9	28'-1"	U
a(E)	4	#9	27'-10"	U
a(E)	4	#9	27'-7"	U
a(E)	4	#9	27'-5"	U
a(E)	4	#9	27'-2"	U
a(E)	4	#9	26'-11"	U
a(E)	4	#9	26'-9"	U
a(E)	4	#9	26'-6"	U
a(E)	4	#9	26'-4"	U
a(E)	4	#9	26'-2"	U
a(E)	4	#9	26'-0"	U
a(E)	4	#9	25'-10"	U
a(E)	4	#9	25'-8"	U
a(E)	4	#9	25'-6"	U
a(E)	4	#9	25'-4"	U
a(E)	4	#9	25'-2"	U
a(E)	4	#9	25'-0"	U
a(E)	4	#9	24'-11"	U
a(E)	4	#9	24'-9"	U
a(E)	4	#9	24'-8"	U
a(E)	4	#9	24'-6"	U
a(E)	4	#9	24'-5"	U
a(E)	4	#9	24'-4"	U
a(E)	4	#9	24'-3"	U
a(E)	4	#9	24'-2"	U
a(E)	8	#9	24'-1"	U
a(E)	8	#9	24'-0"	U
a(E)	78	#9	23'-11"	U



SLAB END DETAIL

LONGITUDINAL SECTION

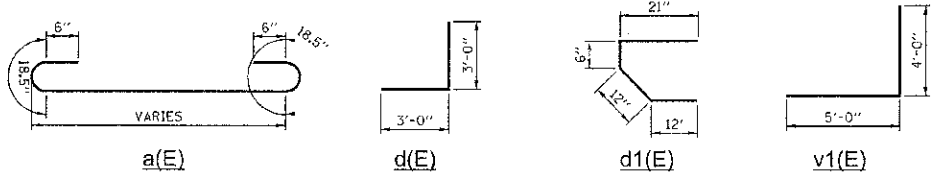


SECTION A-A

NOTES:  
1. BARS INDICATED THUS: 6x3 - #5 ETC. INDICATES 6 LINES OF BARS WITH 3 LENGTHS PER LINE

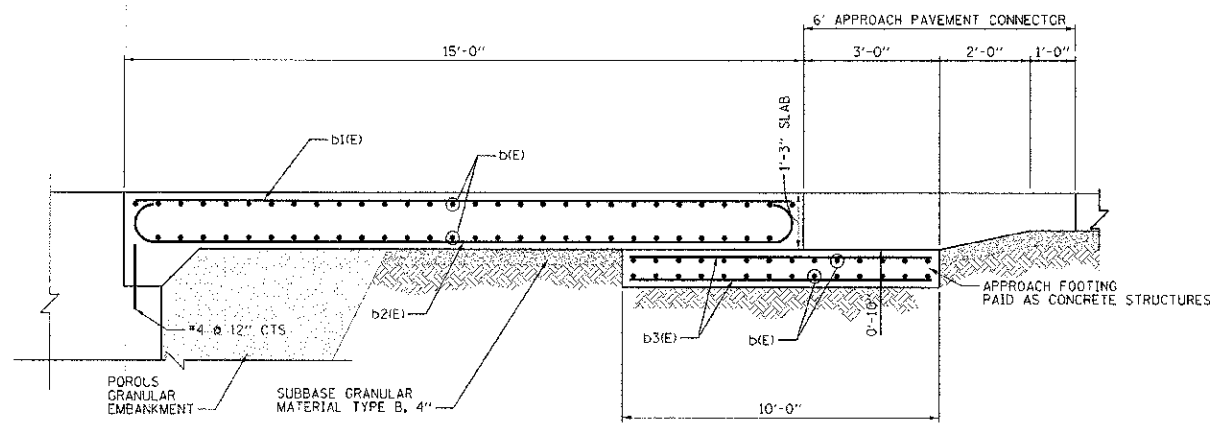
2. MIN. BAR LAP

- #4 - 2'-7"
- #5 - 3'-0"
- #6 - 3'-8"
- #8 - 5'-0"
- #9 - 5'-6"

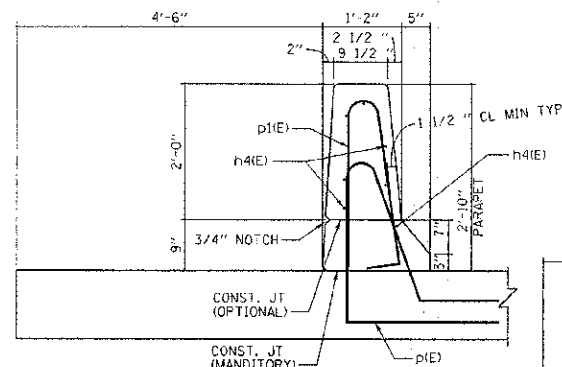
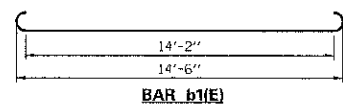


Bar	No.	Size	Length	Shape
t(E)	70	#6	7'-3"	U
w(E)	24	#5	9'-9"	U
w1(E)	8	#5	4'-9"	U
n(E)	70	#5	6'-6"	U
h(E)	24	#4	9'-9"	U
h1(E)	8	#4	4'-9"	U
h2(E)	84	#5	23'-0"	U
h3(E)	360	#8	24'-3"	U
h4(E)	14	#4	26'-9"	U
h5(E)	12	#4	2'-3"	U
a(E)	246	#9	VAR	U
a1(E)	242	#9	VAR	U
d(E)	40	#4	6'-0"	U
d1(E)	126	#4	4'-3"	U
v(E)	105	#5	8'-0"	U
v1(E)	504	#9	9'-0"	U
v2(E)	262	#5	6'-3"	U
b(E)	160	#5	37'-6"	U
b1(E)	74	#9	14'-6"	U
b2(E)	74	#5	15'-9"	U
b3(E)	108	#5	9'-9"	U
p(E)	54	#4	8'-2"	U
p1(E)	40	#4	5'-7"	U
p2(E)	14	#4	9'-2"	U
Item	Unit	Quantity		
Bridge Approach Pavement	SQ YD	130		
Concrete Structures	CU YD	44		
Concrete Box Culvert	CU YD	152		
Reinforcement Bars, Epoxy Coated	POUND	86,147		

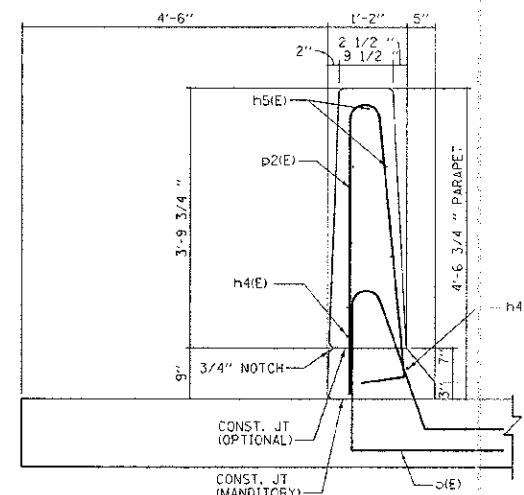
*[Handwritten Signature]*  
Exp. 1-14



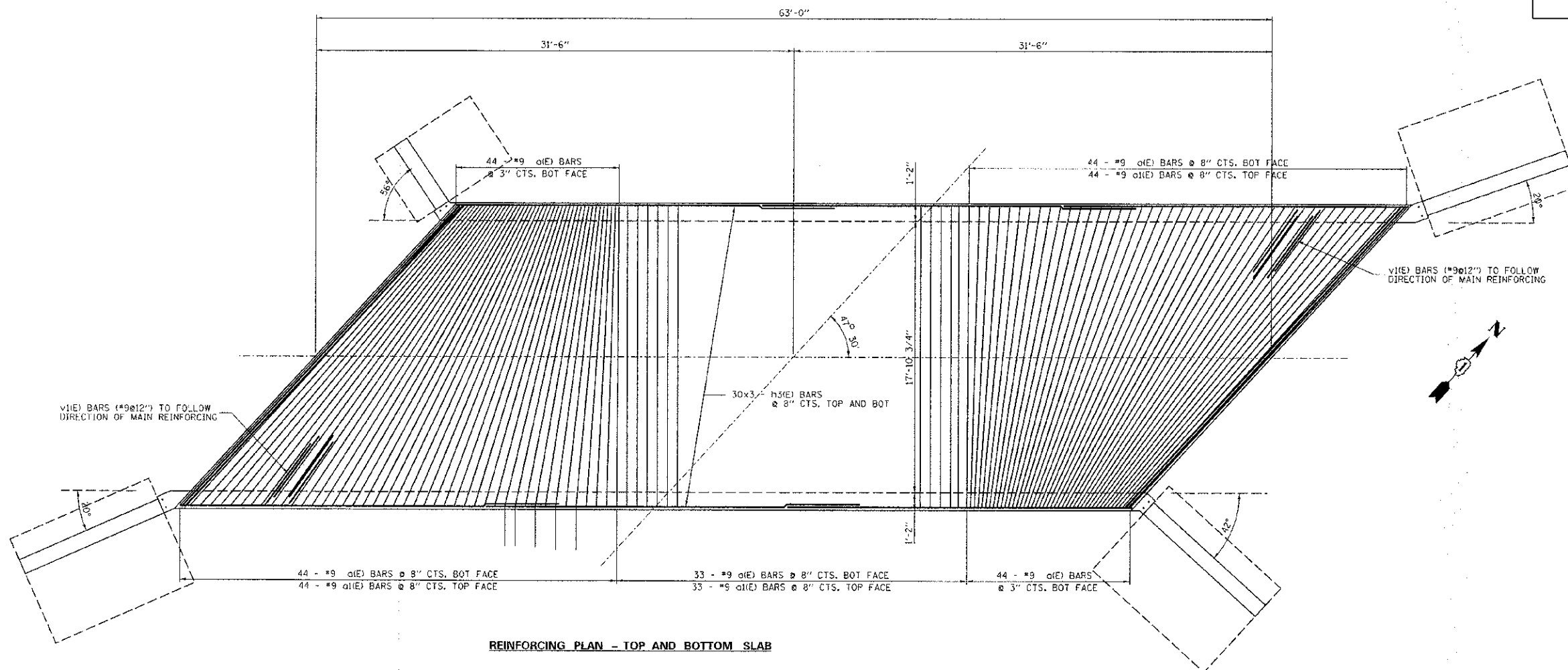
• TILT #9 BARS AS REQUIRED TO MAINTAIN CLEARANCE  
**APPROACH PAVEMENT SECTION**  
 SCALE: NONE



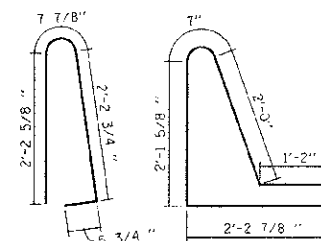
**SECTION THRU PARAPET**



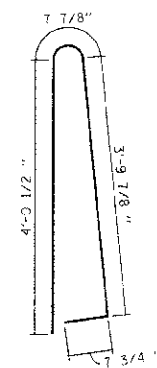
**SECTION THRU PARAPET**



**REINFORCING PLAN - TOP AND BOTTOM SLAB**

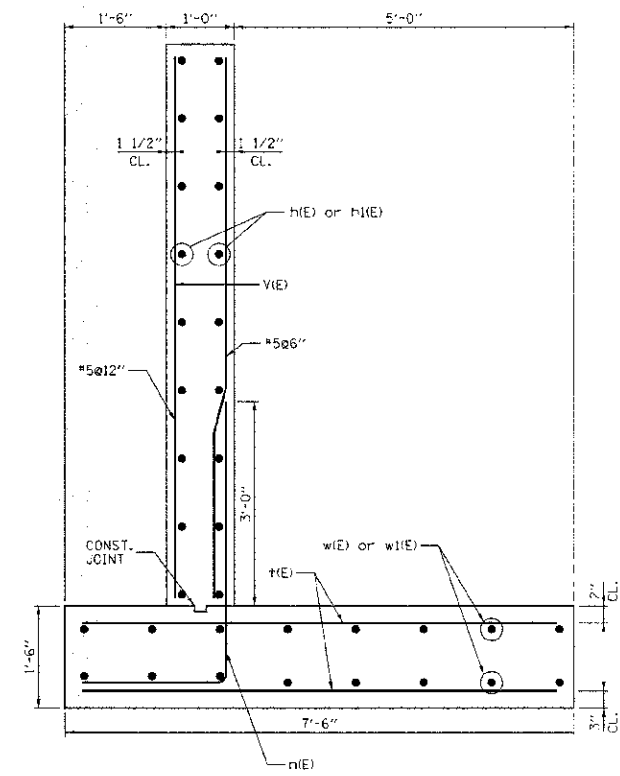
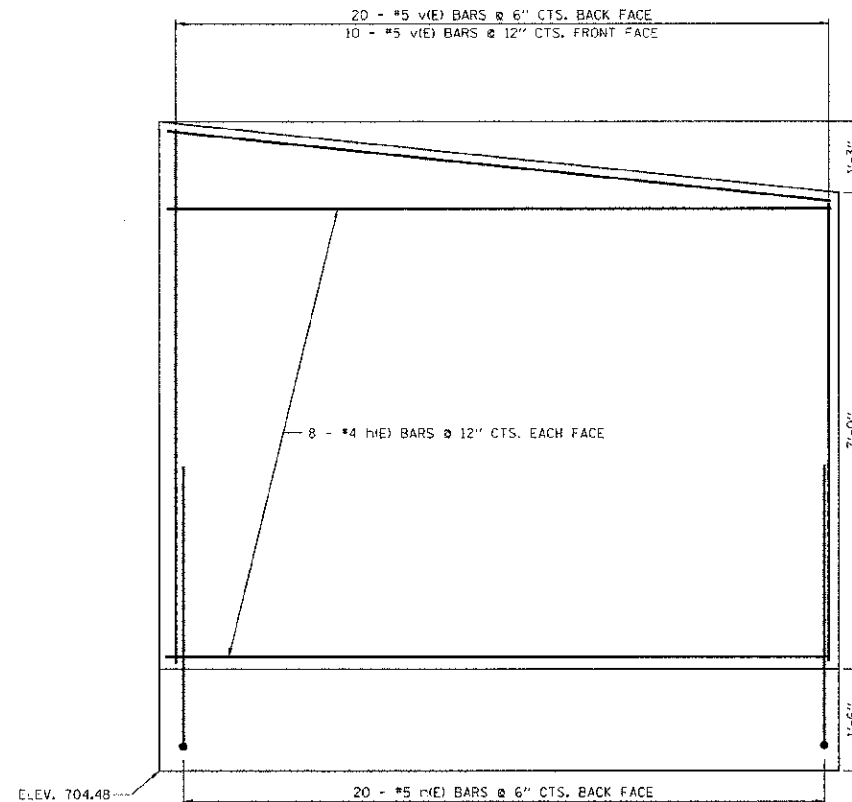
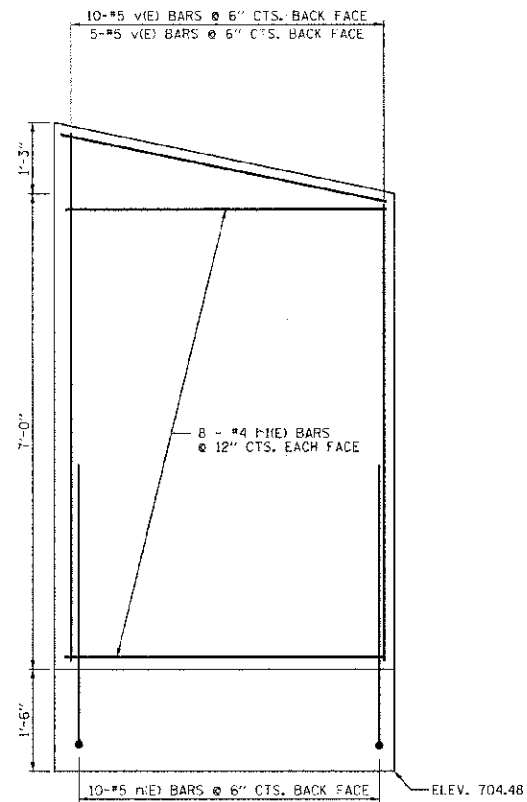


**BAR p1(E)**      **BAR p(E)**

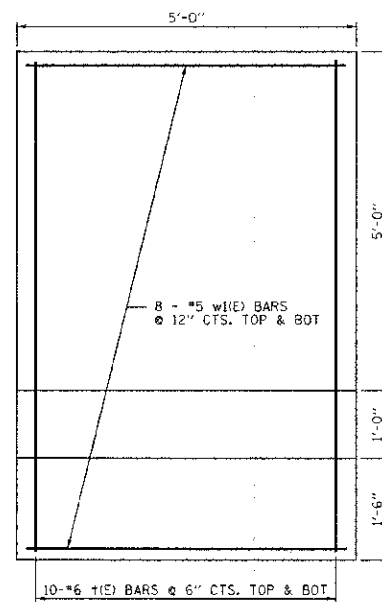


**BAR p2(E)**

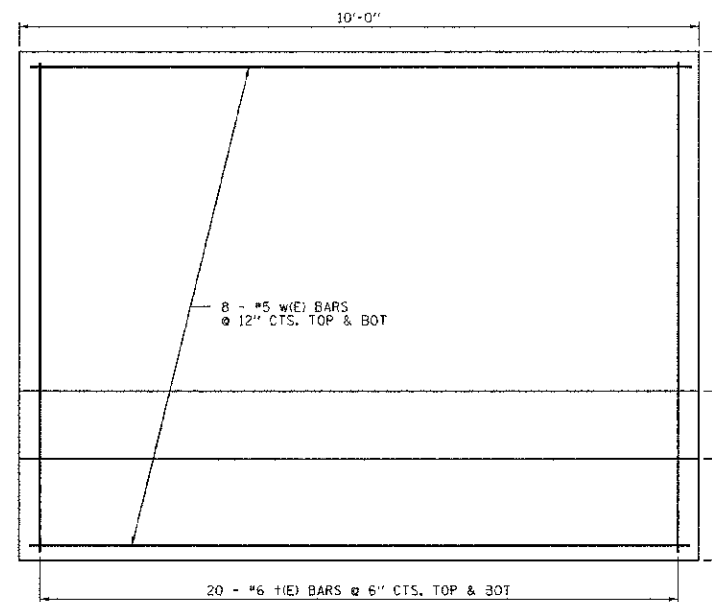
FILE NAME =	USER NAME = USER	DESIGNED - D.R	REVISED -	<b>STATE OF ILLINOIS DEPARTMENT OF TRANSPORTATION</b>	<b>CULVERT DETAILS STRUCTURE NO. 022-6007</b>	E.A.U. / TIE	SECTION	COUNTY	TOTAL SHEETS	SHEET NO.	
NA\dgr\WF\1501-WINFIL-D-RD-BRIDGE\1501.dgn	WF551Structural02.dgn	DRAWN - G.R	REVISED -			2543	10-00045-00-BR	DuPAGE	16	12	
PLOT SCALE = 4.00 / IN.		CHECKED - J.B	REVISED -			SCALE:      STA. 86+71.54 TO STA. 88+18.46      FED. ROAD DIST. NO. 1 ILLINOIS FED. AID PROJECT					
PLOT DATE = 2/28/2013		DATE -	REVISED -			CONTRACT NO. 63812					



MAX SOIL PRESSURE UNDER FOOTING = 2,050 PSF.



NW WINGWALL



NE, SE, SW WINGWALLS



BILL OF MATERIAL

Bar	No.	Size	Length	Shape
t(E)	70	#6	7'-3"	———
w(E)	24	#5	9'-9"	———
w1(E)	8	#5	4'-9"	———
n(E)	70	#5	6'-6"	┌
h(E)	24	#4	9'-9"	———
h1(E)	8	#4	4'-9"	———
v(E)	105	#5	8'-0"	———
Item			Unit	Quantity
Concrete Structures			CU YD	25
Reinforcement Bars, Epoxy Coated			POUND	2579

*Handwritten signature and date: 11/19*



SOIL BORING LOG

Date: 2/21/11

ROUTE Winfield Road Bridge DESCRIPTION North of Bridge Abutment LOGGED BY MAL

SECTION Winfield Road, South of Beach Ave LOCATION Southbound Lane

COUNTY DuPage DRILLING METHOD Hollow Stem Auger HAMMER TYPE Automatic

Table with columns for STRUCT. NO., BORING NO., Station, Offset, Ground Surface Elev., and soil log data including elevations and SPT values.

The Unconfined Compressive Strength (UCS) Failure Mode is indicated by (B-Bulge, S-Shear, P-Penetrometer) The SPT (N value) is the sum of the last two blow values in each sampling zone (AASHTO T206) BBS, from 137 (Rev. 9-99)



SOIL BORING LOG

Date: 2/21/11

ROUTE Winfield Road Bridge DESCRIPTION South of Bridge Abutment LOGGED BY MAL

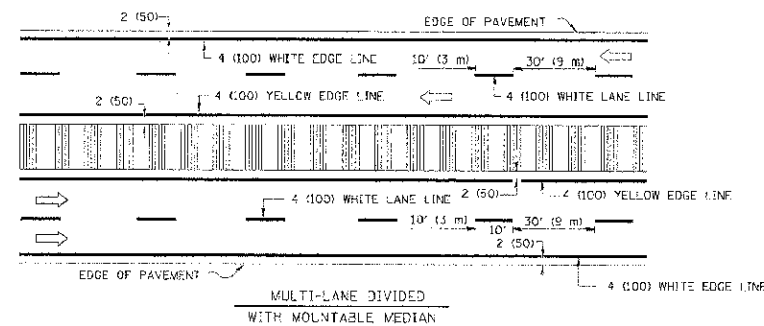
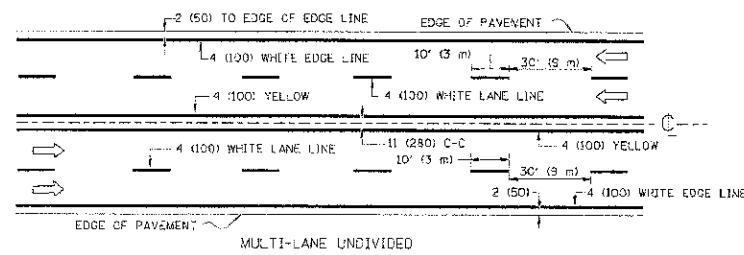
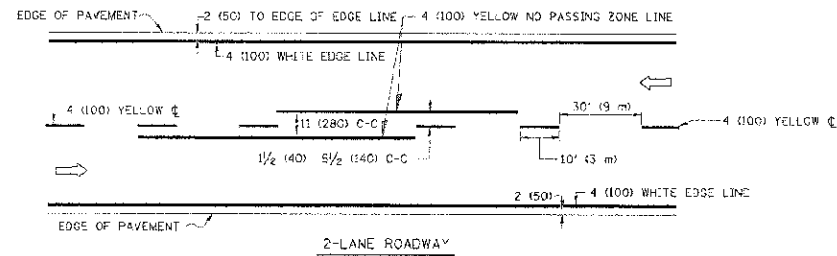
SECTION Winfield Road, South of Beach Ave LOCATION Southbound Lane

COUNTY DuPage DRILLING METHOD Hollow Stem Auger HAMMER TYPE Automatic

Table with columns for STRUCT. NO., BORING NO., Station, Offset, Ground Surface Elev., and soil log data including elevations and SPT values.

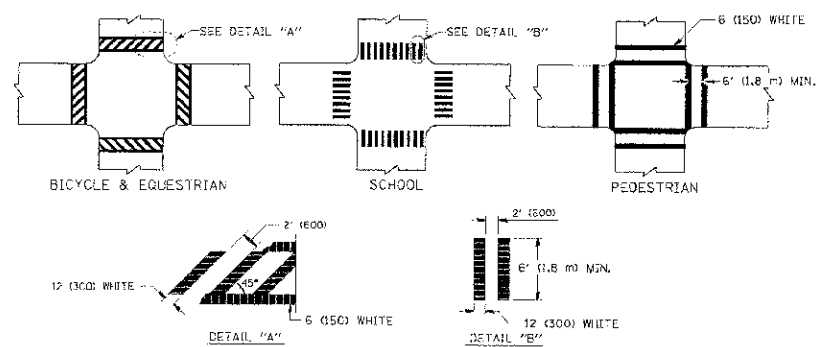
The Unconfined Compressive Strength (UCS) Failure Mode is indicated by (B-Bulge, S-Shear, P-Penetrometer) The SPT (N value) is the sum of the last two blow values in each sampling zone (AASHTO T206) BBS, from 137 (Rev. 9-99)

Project information table including FILE NAME, USER NAME, DESIGNED, REVISED, DRAWN, CHECKED, DATE, STATE OF ILLINOIS DEPARTMENT OF TRANSPORTATION, SOIL BORING LOGS STRUCTURE NO. 022-6007, SCALE, STA. 86+71.54 TO STA. 88+18.46, S.A.U. RTE. 2543, SECTION 10-00045-00-BR, COUNTY DUPAGE, SHEETS 16 OF 14, CONTRACT NO. 63812.

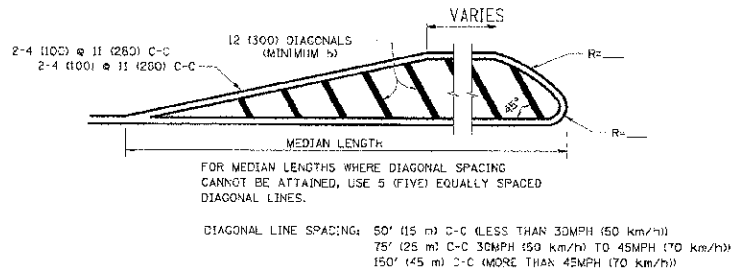
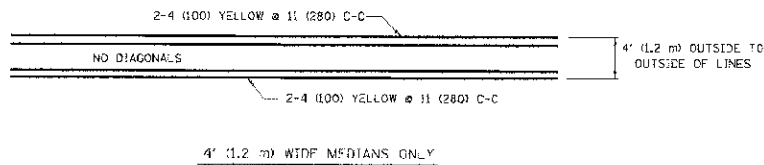


NOTE: MEDIANS WITH BARRIER CURB DO NOT REQUIRE AN EDGE LINE

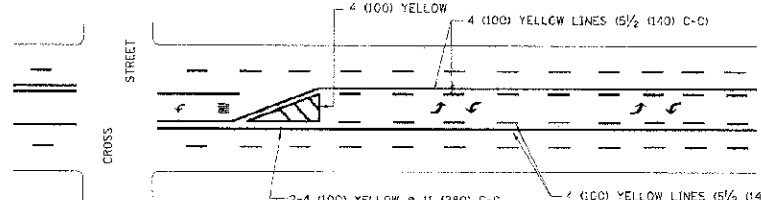
TYPICAL LANE AND EDGE LINE MARKING



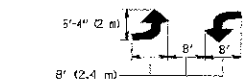
TYPICAL CROSSWALK MARKING



MEDIANS OVER 4' (1.2 m) WIDE

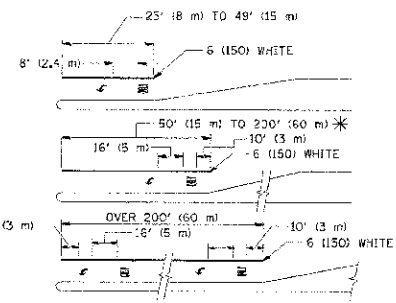


A MINIMUM OF TWO PAIRS OF TURN ARROWS SHALL BE USED, WHITE IN COLOR. ADDITIONAL PAIRS SHALL BE PLACED AT 200' (60 m) TO 300' (90 m) INTERVALS.



MEDIAN WITH TWO-WAY LEFT TURN LANE

TYPICAL PAINTED MEDIAN MARKING

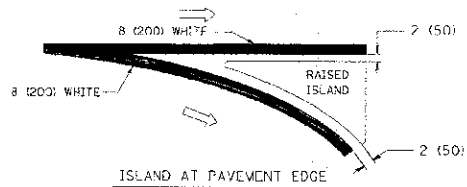
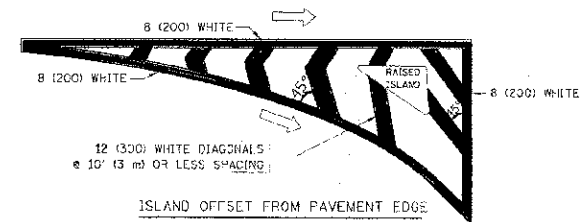


FULL SIZE LETTERS 8' (2.4 m) AND ARROWS SHALL BE USED.  
AREA = 15.6 SQ. FT. (1.5 m<sup>2</sup>) ONLY AREA = 20.6 SQ. FT. (1.9 m<sup>2</sup>)

\* TURN LANES IN EXCESS OF 400' (120 m) IN LENGTH MAY HAVE AN ADDITIONAL SET OF ARROW - "ONLY" INSTALLED MIDWAY BETWEEN THE OTHER TWO SETS OF ARROW - "ONLY".

TYPICAL LEFT (OR RIGHT) TURN LANE

TYPICAL TURN LANE MARKING



TYPICAL ISLAND MARKING

TYPE OF MARKING	WIDTH OF LINE	PATTERN	COLOR	SPACING / REMARKS
CENTERLINE ON 2 LANE PAVEMENT	4 (100)	SKIP-DASH	YELLOW	30' (9 m) LINE WITH 30' (9 m) SPACE
CENTERLINE ON MULTI-LANE UNDIVIDED PAVEMENT	2 @ 4 (100)	SOLID	YELLOW	11 (280) C-C
NO PASSING ZONE LINES FOR ONE DIRECTION FOR BOTH DIRECTIONS	4 (100) 2 @ 4 (100)	SOLID SOLID	YELLOW YELLOW	5/2 (140) C-C FROM SKIP-DASH CENTERLINE 11 (280) C-C EXIT SKIP-DASH CENTERLINE BETWEEN
LANE LINES	4 (100) 5 (125) ON FREEWAYS	SKIP-DASH SKIP-DASH	WHITE WHITE	10' (3 m) LINE WITH 30' (9 m) SPACE
DOTTED LINES (EXTENSIONS OF CENTER, LANE OR TURN LANE MARKINGS)	SAME AS LINE BEING EXTENDED	SKIP-DASH	SAME AS LINE BEING EXTENDED	2' (600) LINE WITH 6' (1.8 m) SPACE
EDGE LINES	4 (100)	SOLID	YELLOW-LEFT WHITE-RIGHT	OUTLINE MOUNTABLE MEDIANS IN YELLOW; EDGE LINES ARE NOT USED NEXT TO BARRIER CURB
TURN LANE MARKINGS	6 (150) LINE; FULL SIZE LETTERS & SYMBOLS (8' (2.4m))	SOLID	WHITE	SEE TYPICAL TURN LANE MARKING DETAIL
TWO WAY LEFT TURN MARKING	2 @ 4 (100) EACH DIRECTION 8' (2.4m) LEFT ARROW	SKIP-DASH AND SOLID IN PAIRS	YELLOW WHITE	10' (3 m) LINE WITH 30' (9 m) SPACE FOR SKIP-DASH; 5/2 (140) C-C BETWEEN SOLID LINE AND SKIP-DASH LINE SEE TYPICAL TWO-WAY LEFT TURN MARKING DETAIL
CROSSWALK LINES (PEDESTRIAN A. DIAGONALS (BIKE & EQUESTRIAN) B. LONGITUDINAL BARS (SCHOOL))	2 @ 6 (150) 12 (300) @ 45° 12 (300) @ 90°	SOLID SOLID SOLID	WHITE WHITE WHITE	NOT LESS THAN 6' (1.8 m) APART 2' (600) APART 2' (600) APART SEE TYPICAL CROSSWALK MARKING DETAILS.
STOP LINES	24 (600)	SOLID	WHITE	PLACE 4' (1.2 m) IN ADVANCE OF AND PARALLEL TO CROSSWALK, IF PRESENT. OTHERWISE, PLACE AT DESIGNATED STOPPING POINT, PARALLEL TO CROSSROAD CENTERLINE, WHERE POSSIBLE
PAINTED MEDIANS	2 @ 4 (100) WITH 12 (300) DIAGONALS @ 45° NO DIAGONALS USED FOR 4' (1.2 m) WIDE MEDIANS	SOLID	YELLOW; TWO WAY TRAFFIC WHITE; ONE WAY TRAFFIC	11 (280) C-C FOR THE DOUBLE LINE SEE TYPICAL PAINTED MEDIAN MARKING.
SCORE MARKING AND DIAMNELLIZING LINES	8 (200) WITH 12 (300) DIAGONALS @ 45°	SOLID	WHITE	DIAGONALS: 15' (4.8 m) C-C (LESS THAN 30MPH (50 km/h)) 20' (6 m) C-C (30MPH (50 km/h) TO 45MPH (70 km/h)) 30' (9 m) C-C (OVER 45MPH (70 km/h))
RAILROAD CROSSING	24 (600) TRANSVERSE LINES; "RR" 15' (4.8 m) LETTERS; 15 (400) LINE FOR "X"	SOLID	WHITE	SEE STATE STANDARD 780001 AREA OF: "R"=3.6 SQ. FT. (0.33 m <sup>2</sup> ) EACH "X"=54.0 SQ. FT. (5.0 m <sup>2</sup> )
SHOULDER DIAGONALS	12 (300) @ 45°	SOLID	WHITE - RIGHT YELLOW - LEFT	50' (15 m) C-C (LESS THAN 30MPH (50 km/h)) 75' (25 m) C-C (30 MPH (50 km/h) TO 45MPH (70 km/h)) 150' (45 m) C-C (OVER 45MPH (70 km/h))

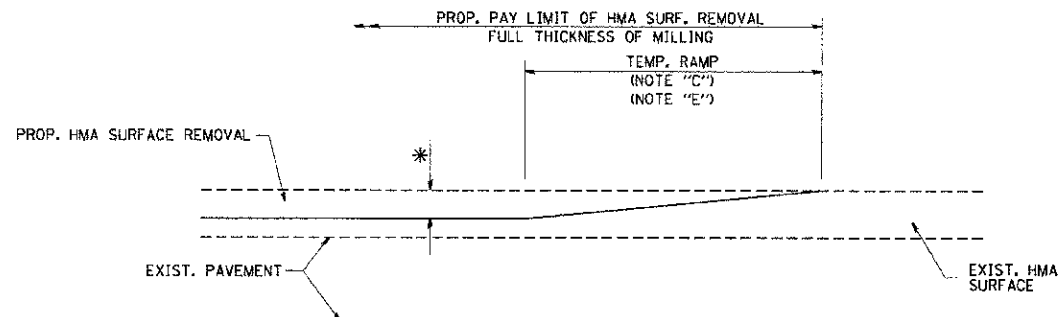
FOR FURTHER DETAILS ON PAVEMENT MARKING REFER TO STANDARD SPECIFICATIONS FOR ROAD AND BRIDGE CONSTRUCTION AND STATE STANDARD 780001.

All dimensions are in inches (millimeters) unless otherwise shown.

FILE NAME =	USER NAME =	DESIGNED =	REVISED =
FILE# =	USER# =	DATE =	DATE =

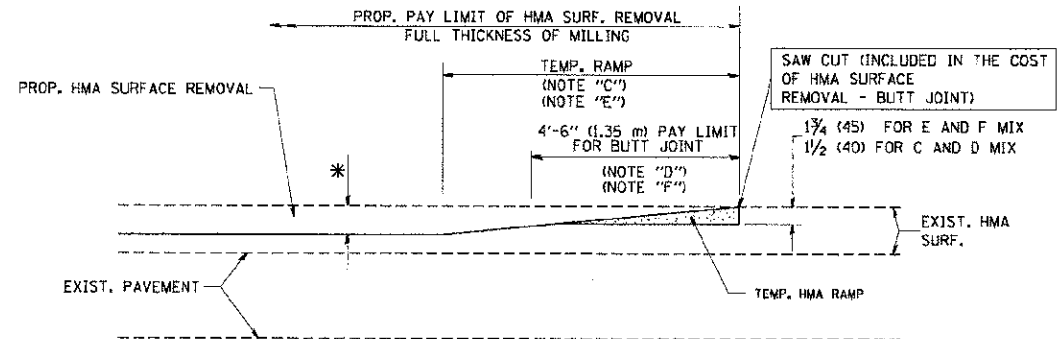
<b>STATE OF ILLINOIS DEPARTMENT OF TRANSPORTATION</b>	
SCALE: NONE	SHEET NO. 1 OF 1 SHEETS STA. TO STA.
<b>STATE OF ILLINOIS DEPARTMENT OF TRANSPORTATION</b>	
SCALE: N.T.S.	STA. 86+71.54 TO STA. 88+18.46

<b>DISTRICT ONE TYPICAL PAVEMENT MARKINGS</b>		F.A. RTE.	SECTION	COUNTY	TOTAL SHEET NO.
<b>DISTRICT ONE TYPICAL PAVEMENT MARKINGS</b>		2543	10-00045-00-BR	DUPAGE	16 15
<b>DISTRICT ONE TYPICAL PAVEMENT MARKINGS</b>		FED. ROAD DIST. NO. 1 ILLINOIS FED. AID PROJECT		CONTRACT NO. 63812	



MILLED TEMPORARY RAMP  
(FOR BUTT JOINT AND HMA TAPER SEE DETAIL BELOW)

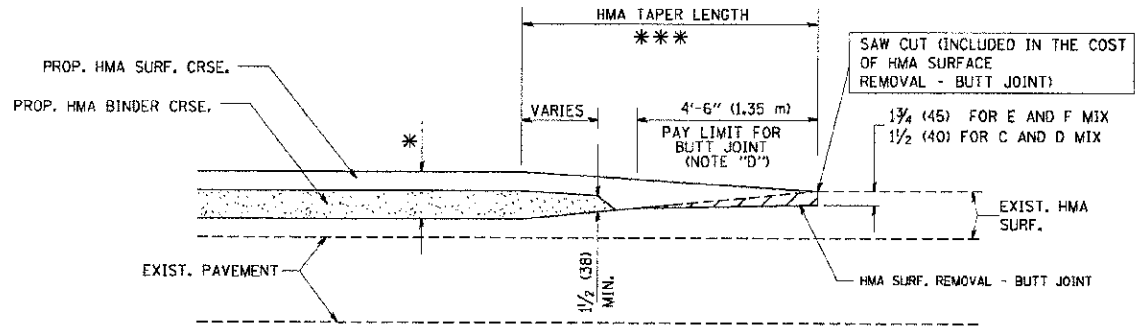
OPTION 1



HMA CONSTRUCTED TEMPORARY RAMP  
(FOR BUTT JOINT AND HMA TAPER SEE DETAIL BELOW)

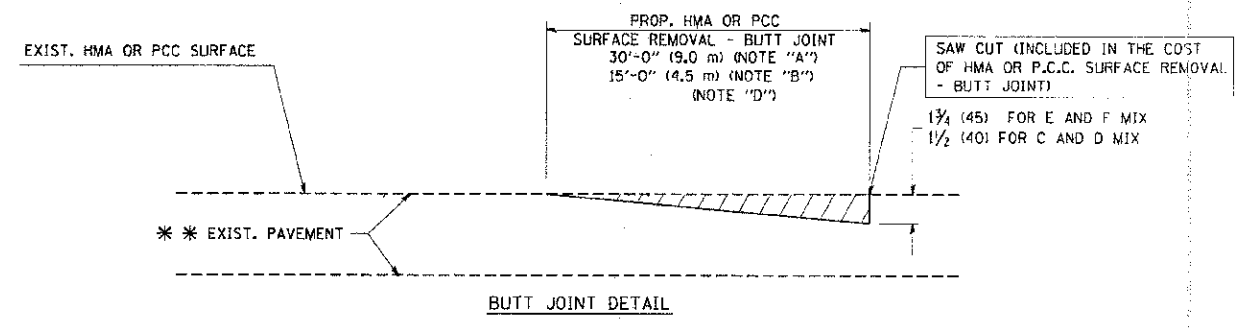
OPTION 2

TYPICAL TEMPORARY RAMP

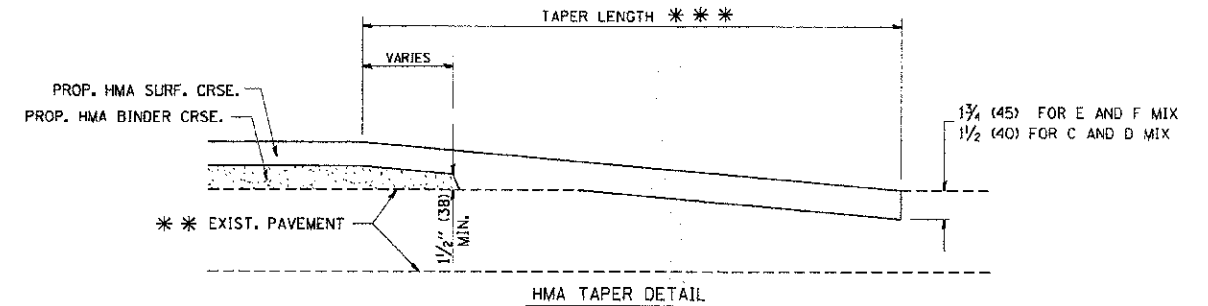


BUTT JOINT AND HMA TAPER

TYPICAL BUTT JOINT AND HMA TAPER FOR MILLING AND RESURFACING



BUTT JOINT DETAIL



HMA TAPER DETAIL

TYPICAL BUTT JOINT AND HMA TAPER FOR RESURFACING ONLY

\*\*\* PC CONCRETE, HMA OR HMA RESURFACED PAVEMENT.

NOTES

- A: MAINLINE ROADWAYS AND MAJOR SIDE ROADS.
- B: MINOR SIDE ROADS.
- C: THE TEMP. RAMP SHALL BE CONSTRUCTED IMMEDIATELY UPON REMOVAL OF THE EXISTING HMA SURFACE.
- D: THE BUTT JOINT SHALL BE CONSTRUCTED IMMEDIATELY PRIOR TO PLACING THE PROPOSED HMA COURSES.
- E: TAPER THE TEMP. RAMP AT A RATE OF 3'-0" (900 mm) PER 1 INCH (25 mm) OF MILLING THICKNESS.
- F: INSTALLATION AND REMOVAL OF THE 4'-6" (1.35 m) TEMP. RAMP IS INCLUDED IN COST OF HMA SURFACE REMOVAL - BUTT JOINT
- G: SEE ARTICLE 406.08 AND 406.14 OF THE STANDARD SPECIFICATIONS FOR "HMA AND/OR PCC SURFACE REMOVAL, BUTT JOINT".
- \* SEE TYPICAL SECTIONS FOR MILLING THICKNESS.
- \*\*\* 20'-0" (6.1 m) PER 1 (25) RESURFACING (NOTE "A")  
10'-0" (3.0 m) PER 1 (25) RESURFACING (NOTE "B")

ALL DIMENSIONS ARE IN INCHES (MILLIMETERS) UNLESS OTHERWISE SHOWN.

BASIS OF PAYMENT:  
THE BUTT JOINT WILL BE PAID FOR AT THE CONTRACT UNIT PRICE PER SQUARE YARD (SQUARE METER) FOR "HOT-MIX ASPHALT SURFACE REMOVAL - BUTT JOINT" OR FOR "PORTLAND CEMENT CONCRETE SURFACE REMOVAL - BUTT JOINT".

REVISIONS	
NAME	DATE
M. DE YONG	6-13-90
M. DE YONG	7-3-90
M. DE YONG	3-27-92
R. SHAH	09/09/94
R. SHAH	10/25/94
A. ABBAS	03/21/97
M. GOMEZ	04/06/01
R. BORD	01/01/07

ILLINOIS DEPARTMENT OF TRANSPORTATION

BUTT JOINT AND HMA TAPER DETAILS

SCALE: VERT. NONE  
HORIZ. NONE

DRAWN BY

CHECKED BY

BD40C-05 (V=BD32)

FILE NAME =	USER NAME = #USER#	DESIGNED - D.R.	REVISED -
#FILE#		DRAWN - G.P.	REVISED -
	PLOT SCALE = #SCALE#	CHECKED - J.B.	REVISED -
	PLOT DATE = #DATE#	DATE -	REVISED -

STATE OF ILLINOIS  
DEPARTMENT OF TRANSPORTATION

BUTT JOINT AND HMA TAPER DETAILS

SCALE: N.T.S.

STA. 85+71.54 TO STA. 88+18.46

F.A.D.:	SECTION	COUNTY	TOTAL SHEETS	SHEET NO.
2543	10-00045-00-BR	DUPAGE	16	16
CONTRACT NO. 63812				
FED. ROAD DIST. NO. 1 ILLINOIS FED. AID PROJECT				