

FOR INDEX OF SHEETS, SEE SHEET NO. 2

STATE OF ILLINOIS

DEPARTMENT OF TRANSPORTATION
DIVISION OF HIGHWAYS

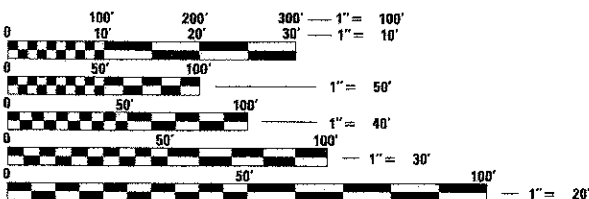
PLANS FOR PROPOSED
FEDERAL AID HIGHWAY

| STD. No. | DESCRIPTION |
|-----------|---|
| 000001-06 | STANDARD SYMBOLS, ABBREVIATIONS AND PATTERNS |
| 001006 | DECIMAL OF AN INCH AND OF A FOOT |
| 424001-07 | PERPENDICULAR CURB RAMPS FOR SIDEWALKS |
| 606001-05 | CONCRETE CURB TYPE B AND COMBINATION CONCRETE CURB AND GUTTER |
| 701301-04 | LANE CLOSURE, 2L, 2W SHORT TIME OPERATIONS |
| 701602-06 | URBAN LANE CLOSURE, MULTILANE, 2W WITH BIDIRECTIONAL LEFT TURN LANE |
| 701701-08 | URBAN LANE CLOSURE, MULTILANE INTERSECTION |
| 701801-05 | SIDEWALK, CORNER OR CROSSWALK CLOSURE |
| 701901-02 | TRAFFIC CONTROL DEVICES |
| 805001-01 | ELECTRICAL SERVICE INSTALLATION DETAILS |
| 814001-02 | HANDHOLES |
| 814006-02 | DOUBLE HANDHOLES |
| 857001-01 | STANDARD PHASE DESIGNATION DIAGRAMS AND PHASE SEQUENCES |
| 862001-01 | UNINTERRUPTABLE POWER SUPPLY (UPS) |
| 873001-02 | TRAFFIC SIGNAL GROUNDING & BONDING |
| 877001-05 | STEEL MAST ARM ASSEMBLY AND POLE 18' THROUGH 55' |
| 878001-09 | CONCRETE FOUNDATION DETAILS |
| 880001-01 | SPAN WIRE MOUNTED SIGNALS AND FLASHING BEACON INSTALLATION |
| 880006-01 | TRAFFIC SIGNAL MOUNTING DETAILS |
| 886001-01 | DETECTOR LOOP INSTALLATIONS |
| 886006-01 | TYPICAL LAYOUTS FOR DETECTION LOOPS |

FAU 2690 (WOLF ROAD) AT TR 2910 (WINTERS DRIVE)
TRAFFIC SIGNAL MODERIZATION
SECTION: 12-00081-00-TL
PROJECT NO.: M-4003(145)
CITY OF NORTHLAKE
COOK COUNTY
JOB NO.: C-91-160-13

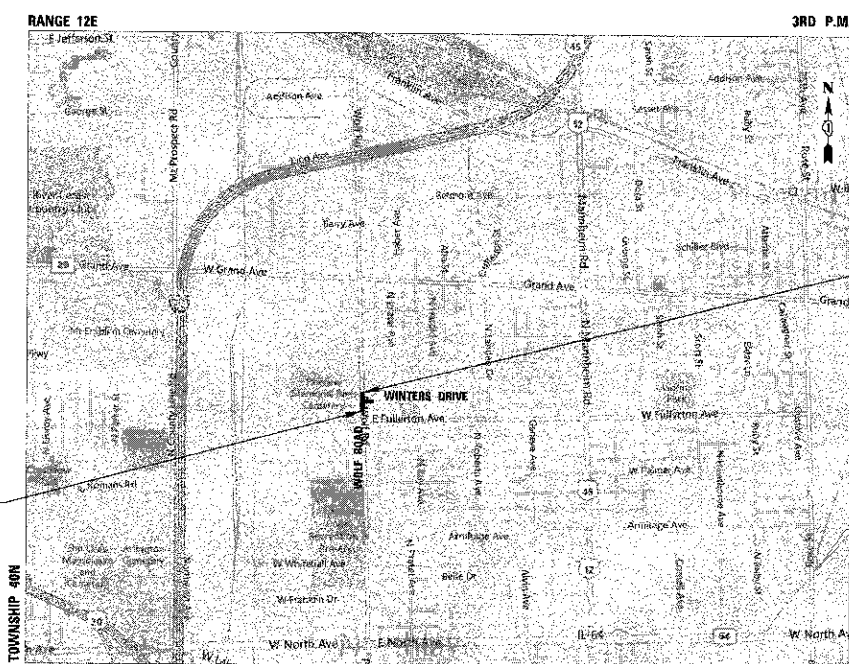
TRAFFIC DATA

| ROUTE SEGMENT | SPEED (MPH) | ADT (2011) | CLASSIFICATION |
|---------------|-------------|------------|---|
| WOLF ROAD | 30 | 10,300 | URBAN 5 LANE CROSS-SECTION, MAJOR COLLECTOR |
| WINTERS DRIVE | 20 | 1,500 | RURAL CROSS-SECTION, LOCAL STREET |



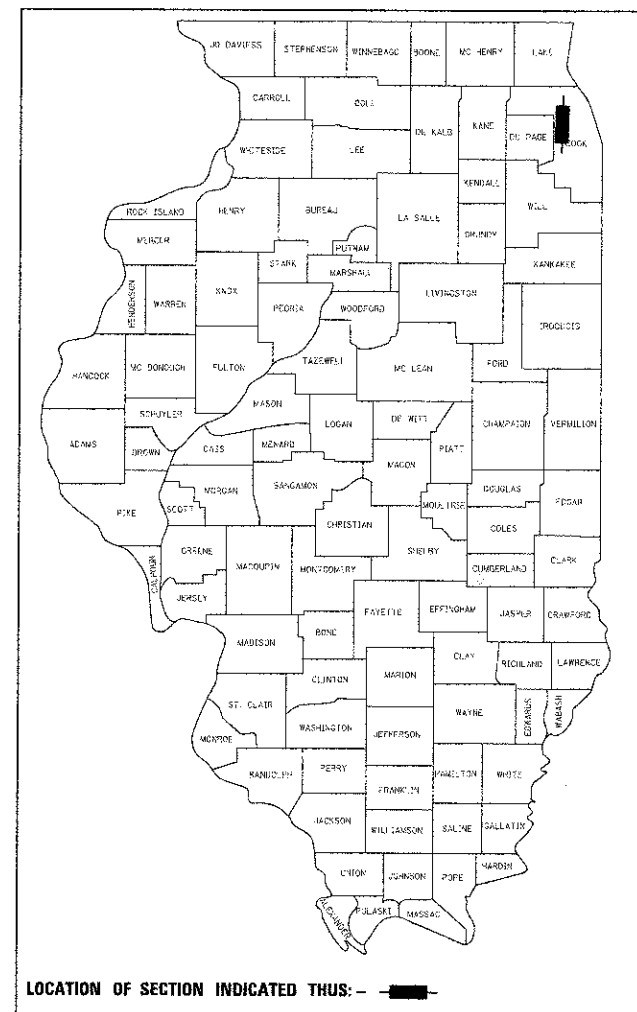
FULL SIZE PLANS HAVE BEEN PREPARED USING STANDARD ENGINEERING SCALES. REDUCED SIZED PLANS WILL NOT CONFORM TO STANDARD SCALES. IN MAKING MEASUREMENTS ON REDUCED PLANS, THE ABOVE SCALES MAY BE USED.

J.U.L.I.E.
JOINT UTILITY LOCATION INFORMATION FOR EXCAVATION
1-800-892-0123
OR 811



LEYDEN TOWNSHIP
NET LENGTH = 472 FEET (0.09 MILES)
GROSS LENGTH = 472 FEET (0.09 MILES)

| | | | | |
|---------------------|-----------------------|--------|--------------|-----------|
| F.A.U. RTE. | SECTION | COUNTY | TOTAL SHEETS | SHEET NO. |
| 2590 | 12-00081-00-TL | COOK | 13 | 1 |
| FED. ROAD DIST. NO. | ILLINOIS CONTRACT NO. | | 63815 | |



LOCATION OF SECTION INDICATED THUS: - ■ -

STATE OF ILLINOIS
DEPARTMENT OF TRANSPORTATION
DIVISION OF HIGHWAYS

APPROVED 3-4-2013
[Signature]
CITY OF NORTHLAKE REPRESENTATIVE

PASSED FEBRUARY 27 2013
[Signature]
DISTRICT ONE ENGINEER OF LOCAL ROADS & STREETS

RELEASING FOR BID
BASED ON LIMITED REVIEW February 27 2013
[Signature]
DEPUTY DIRECTOR OF HIGHWAYS, REGION 1 ENGINEER

PRINTED BY THE AUTHORITY
OF THE STATE OF ILLINOIS

[Signature] 02-04-13
ENGINEER DATE
GEORGE M. ZIEGLER
ILLINOIS REGISTRATION No. 062-045853
EXPIRATION DATE: 11-30-20
PROFESSIONAL DESIGN FIRM No.: 184-001742
EXPIRATION DATE: 04-30-20

PROGRAM AND OFFICE ENGINEER: CHARLES F. RIDGLE, P.E. (847) 705-4406, SCHAUMBURG, IL