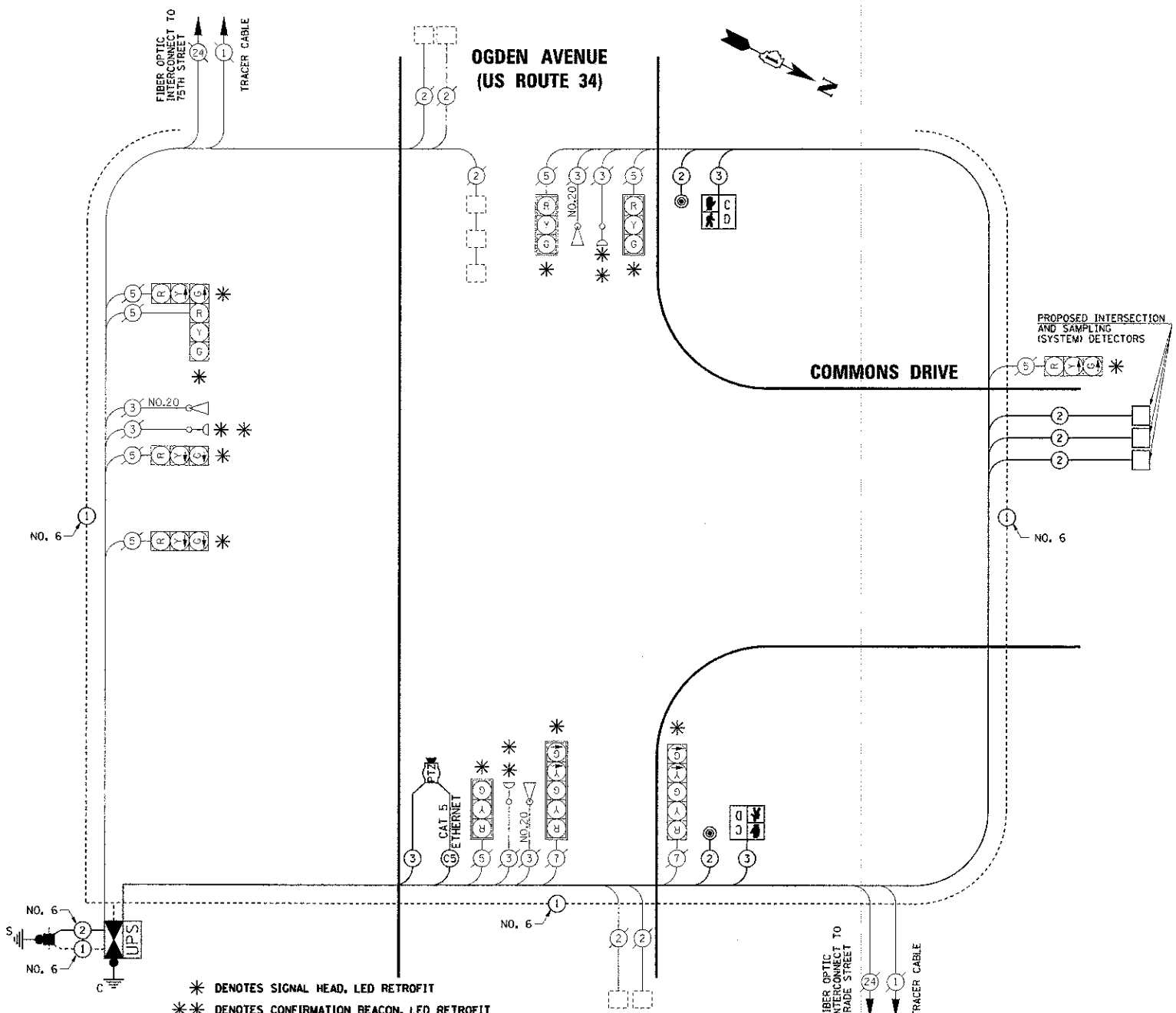


DATE	
BY	
REVISIONS	
NO.	
DATE	
BY	
REVISIONS	
NO.	
DATE	
BY	
REVISIONS	
NO.	

DATE	
BY	
REVISIONS	
NO.	
DATE	
BY	
REVISIONS	
NO.	
DATE	
BY	
REVISIONS	
NO.	

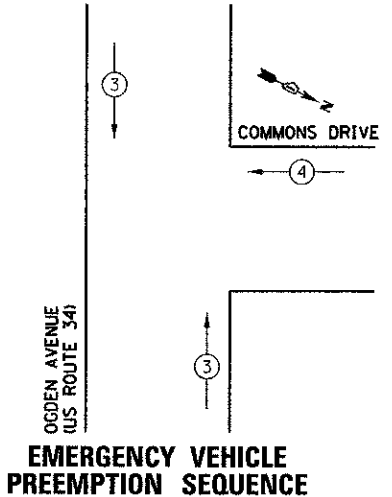


* DENOTES SIGNAL HEAD, LED RETROFIT
 ** DENOTES CONFIRMATION BEACON, LED RETROFIT

I.D.O.T TRAFFIC SIGNAL INSTALLATION ELECTRICAL SERVICE REQUIREMENTS					
TYPE	NO. LAMPS	WATTAGE		% OPERATION	TOTAL WATTAGE
		INCAND.	LED		
SIGNAL (RED)	10		17	0.50	85
(YELLOW)	6		25	0.25	37.5
(GREEN)	6		15	0.25	22.5
ARROW	12		12	0.10	14.4
PED. SIGNAL	2		25	1.00	50
CONTROLLER	1		100	1.00	100
TOTAL =					309.4

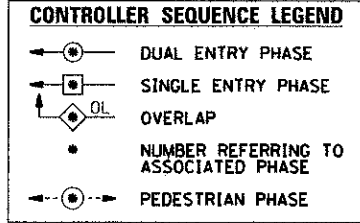
ENERGY COSTS TO: CITY OF AURORA
 44 E. DOWNER PLACE
 AURORA, ILLINOIS 60507-2067

ENERGY SUPPLY CONTACT: MARK SCHERIBEL
 PHONE: (630) 723-2128
 COMPANY: COMMONWEALTH EDISON



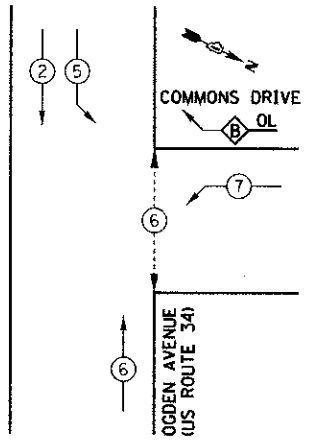
EMERGENCY VEHICLE PREEMPTION SEQUENCE

PROPOSED EMERGENCY VEHICLE PREEMPTORS		
PROPOSED EMERGENCY VEHICLE PREEMPTORS	3	4
MOVEMENT	↑	←



STATE OF ILLINOIS
 DEPARTMENT OF TRANSPORTATION

CONTROLLER SEQUENCE



PHASE DESIGNATION DIAGRAM

SCHEDULE OF QUANTITIES

PAY ITEM DESCRIPTION	UNIT	OGDEN AVENUE
PORTLAND CEMENT CONCRETE SIDEWALK 6 INCH	SQ FT	36
DETECTABLE WARNINGS	SQ FT	7
SIDEWALK REMOVAL	SQ FT	36
ENGINEER'S FIELD OFFICE, TYPE B	CAL MO	0.3
MOBILIZATION	L SUM	0.1
TRAFFIC CONTROL AND PROTECTION, STANDARD 701801	L SUM	0.1
TRAFFIC CONTROL AND PROTECTION, STANDARD 701701	L SUM	0.1
TRAFFIC CONTROL AND PROTECTION, STANDARD 701801	L SUM	0.1
THERMOPLASTIC PAVEMENT MARKING - LINE 6"	FOOT	188
THERMOPLASTIC PAVEMENT MARKING - LINE 6"	FOOT	188
SERVICE INSTALLATION - POLE MOUNTED	EACH	1
UNDERGROUND CONDUIT, GALVANIZED STEEL, 2" DIA.	FOOT	196
HANDHOLE	EACH	1
MAINTENANCE OF EXISTING TRAFFIC SIGNAL INSTALLATION	EACH	1
GROUNDING EXISTING HANDHOLE FRAME AND COVER	EACH	6
ELECTRIC CABLE IN CONDUIT, SIGNAL NO. 14 2C	FOOT	489
ELECTRIC CABLE IN CONDUIT, SIGNAL NO. 14 3C	FOOT	582
ELECTRIC CABLE IN CONDUIT, LEAD-IN, NO. 14 1 PAIR	FOOT	1472
ELECTRIC CABLE IN CONDUIT, SERVICE, NO. 6 2 C	FOOT	122
ELECTRIC CABLE IN CONDUIT, EQUIPMENT GROUNDING CONDUCTOR, NO. 6 1C	FOOT	695
DRILL EXISTING HANDHOLE	EACH	1
PEDESTRIAN SIGNAL HEAD, LED, 1-FACE, BRACKET MOUNTED WITH COUNTDOWN TIMER	EACH	2
INDUCTIVE LOOP DETECTOR	EACH	8
DETECTOR LOOP, TYPE I	FOOT	130
LIGHT DETECTOR AMPLIFIER	EACH	1
PEDESTRIAN PUSH-BUTTON	EACH	2
MODIFY EXISTING CONTROLLER FOUNDATION	EACH	1
REMOVE ELECTRIC CABLE FROM CONDUIT	FOOT	1114
REMOVE EXISTING TRAFFIC SIGNAL EQUIPMENT	EACH	1
CAT 5 ETHERNET CABLE	FOOT	79
FULL-ACTUATED CONTROLLER AND TYPE IV CABINET, SPECIAL	EACH	1
UNINTERRUPTABLE POWER SUPPLY, SPECIAL	EACH	1
SIGNAL HEAD, LED, 1-FACE, 3-SECTION, BRACKET MOUNTED, RETROFIT	EACH	5
SIGNAL HEAD, LED, 1-FACE, 3-SECTION, MAST ARM MOUNTED, RETROFIT	EACH	3
SIGNAL HEAD, LED, 1-FACE, 5-SECTION, MAST ARM MOUNTED, RETROFIT	EACH	1
SIGNAL HEAD, LED, 1-FACE, 5-SECTION, BRACKET MOUNTED, RETROFIT	EACH	1
INTERSECTION VIDEO TRAFFIC MONITORING SYSTEM WITH PTZ CAMERA	EACH	1
EVP CONFIRMATION BEACON, LED RETROFIT	EACH	3

OVERLAP PHASE	PERMISSIVE PHASE	PROTECTED PHASE
B	= 7	+ 5

THE TRAFFIC SIGNAL CONTROL EQUIPMENT FOR THIS PROJECT SHALL BE "ECONOLITE" TO MATCH THE EXISTING ADJACENT SYSTEM.

THE EMERGENCY VEHICLE PREEMPTION EQUIPMENT FOR THIS PROJECT SHALL BE OPTICOM AS REQUIRED BY THE CITY OF AURORA. LIGHT DETECTOR AMPLIFIERS SHALL BE OPTICOM MODEL 764 MULTIMODE PHASE SELECTORS.

THE END OF THE TRACER CABLE SHALL BE CONTINUOUS AND EXTEND INTO THE CONTROLLER CABINET.



HRGreen.com
 18000 Professional Design Firm
 # 104-001822

USER NAME = MFeiler
 DESIGNED - MJF
 CHECKED - APS
 DATE - 02/21/2013

REVISIONS
 REVISIONS
 REVISIONS

STATE OF ILLINOIS
 DEPARTMENT OF TRANSPORTATION

CABLE PLAN AND PHASE DESIGNATION DIAGRAM
 COMMONS DRIVE AT OGDEN AVENUE (US ROUTE 34)

SCALE: SHEET NO. OF SHEETS STA. TO STA.

F.A.U. RTE. 1531/2532	SECTION 11-00297-00-TL	COUNTY DU PAGE	TOTAL SHEETS 38	SHEET NO. 11
CONTRACT NO. 63816				
FED. ROAD DIST. NO. ILLINOIS FED. AID PROJECT				