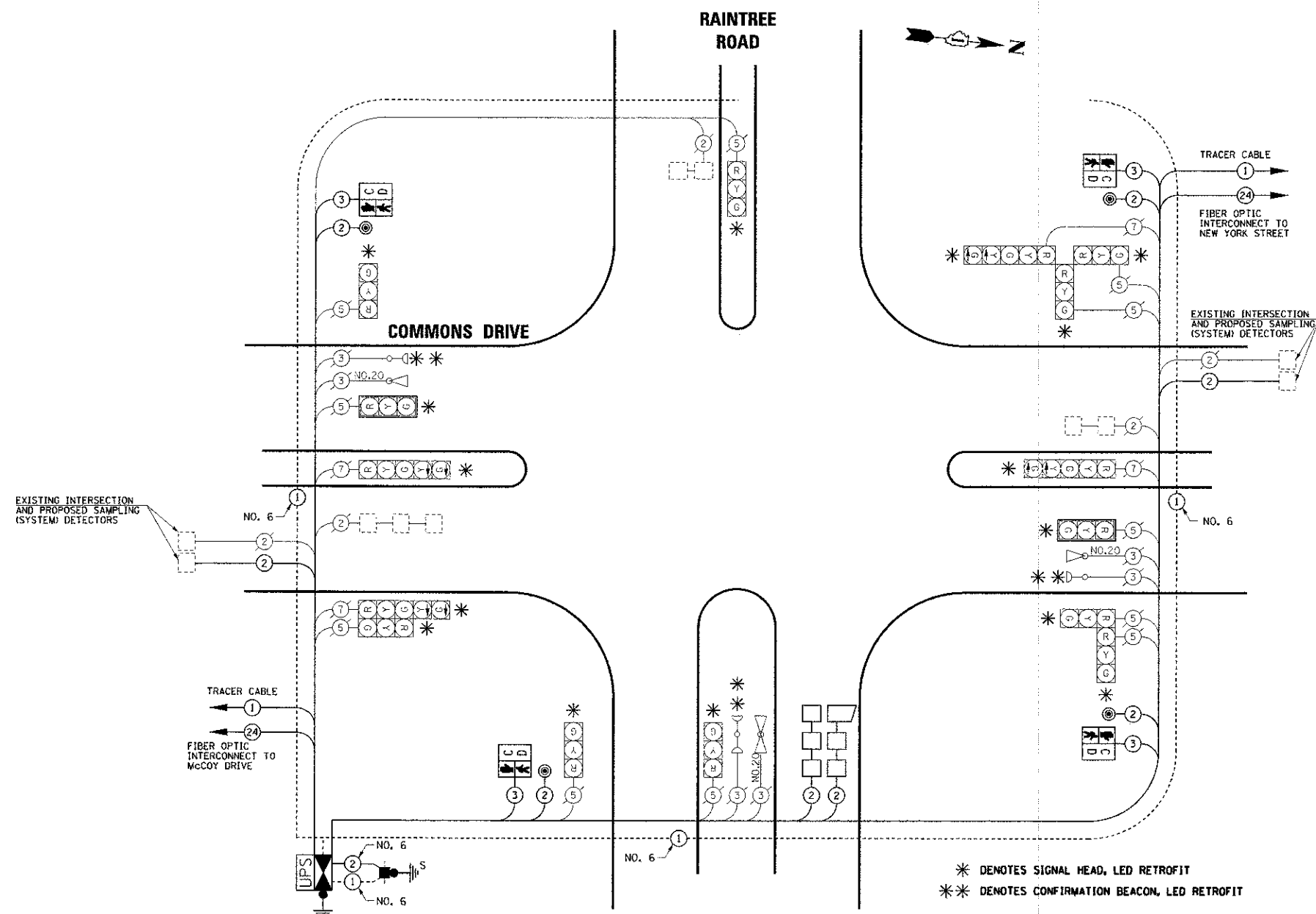


| | | |
|-----------|----|------|
| REVISIONS | BY | DATE |
| 1 | | |
| 2 | | |
| 3 | | |
| 4 | | |
| 5 | | |
| 6 | | |
| 7 | | |
| 8 | | |
| 9 | | |
| 10 | | |
| 11 | | |
| 12 | | |
| 13 | | |
| 14 | | |
| 15 | | |
| 16 | | |
| 17 | | |
| 18 | | |
| 19 | | |
| 20 | | |
| 21 | | |
| 22 | | |
| 23 | | |
| 24 | | |
| 25 | | |
| 26 | | |
| 27 | | |
| 28 | | |
| 29 | | |
| 30 | | |
| 31 | | |
| 32 | | |
| 33 | | |
| 34 | | |
| 35 | | |
| 36 | | |
| 37 | | |
| 38 | | |
| 39 | | |
| 40 | | |
| 41 | | |
| 42 | | |
| 43 | | |
| 44 | | |
| 45 | | |
| 46 | | |
| 47 | | |
| 48 | | |
| 49 | | |
| 50 | | |

| | | |
|-----------|----|------|
| REVISIONS | BY | DATE |
| 1 | | |
| 2 | | |
| 3 | | |
| 4 | | |
| 5 | | |
| 6 | | |
| 7 | | |
| 8 | | |
| 9 | | |
| 10 | | |
| 11 | | |
| 12 | | |
| 13 | | |
| 14 | | |
| 15 | | |
| 16 | | |
| 17 | | |
| 18 | | |
| 19 | | |
| 20 | | |
| 21 | | |
| 22 | | |
| 23 | | |
| 24 | | |
| 25 | | |
| 26 | | |
| 27 | | |
| 28 | | |
| 29 | | |
| 30 | | |
| 31 | | |
| 32 | | |
| 33 | | |
| 34 | | |
| 35 | | |
| 36 | | |
| 37 | | |
| 38 | | |
| 39 | | |
| 40 | | |
| 41 | | |
| 42 | | |
| 43 | | |
| 44 | | |
| 45 | | |
| 46 | | |
| 47 | | |
| 48 | | |
| 49 | | |
| 50 | | |

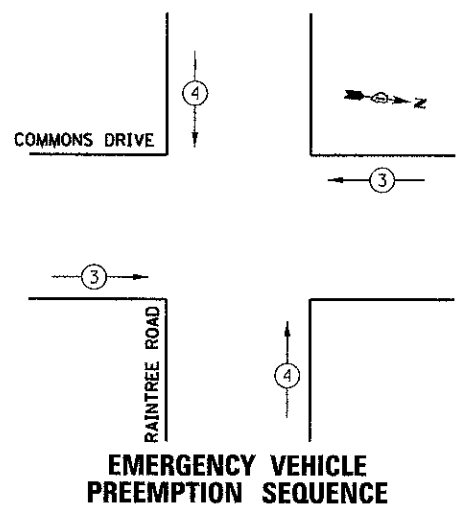


* DENOTES SIGNAL HEAD, LED RETROFIT
 ** DENOTES CONFIRMATION BEACON, LED RETROFIT

| I.D.O.T TRAFFIC SIGNAL INSTALLATION ELECTRICAL SERVICE REQUIREMENTS | | | | | |
|---|-----------|---------|-----|-------------|---------------|
| TYPE | NO. LAMPS | WATTAGE | | % OPERATION | TOTAL WATTAGE |
| | | INCAND. | LED | | |
| SIGNAL (RED) | 15 | | 17 | 0.50 | 127.5 |
| (YELLOW) | 15 | | 25 | 0.25 | 93.8 |
| (GREEN) | 15 | | 15 | 0.25 | 56.3 |
| ARROW | 8 | | 12 | 0.10 | 9.6 |
| PED. SIGNAL | 2 | | 25 | 1.00 | 50 |
| CONTROLLER | 1 | | 100 | 1.00 | 100 |
| TOTAL = | | | | | 437.2 |

ENERGY COSTS TO: CITY OF AURORA
 44 E. DOWNER PLACE
 AURORA, ILLINOIS 60507-2067

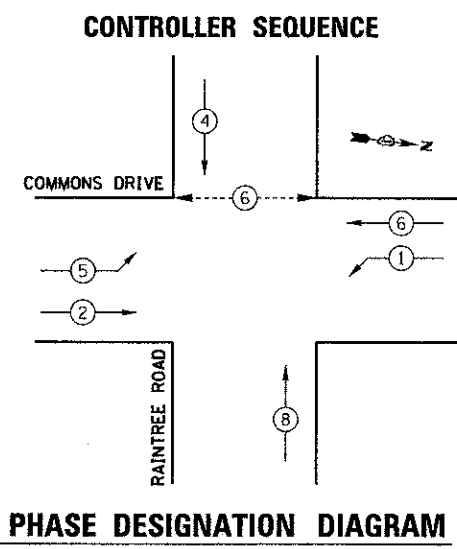
ENERGY SUPPLY CONTACT: MARK SCHERIBEL
 PHONE: (630) 723-2128
 COMPANY: COMMONWEALTH EDISON



| PROPOSED EMERGENCY VEHICLE PREEMPTORS | | |
|---------------------------------------|---|---|
| PROPOSED EMERGENCY VEHICLE PREEMPTORS | 3 | 4 |
| MOVEMENT | → | ↑ |

| CONTROLLER SEQUENCE LEGEND | |
|----------------------------|--------------------------------------|
| ←●→ | DUAL ENTRY PHASE |
| ←● | SINGLE ENTRY PHASE |
| ←●→ | OVERLAP |
| * | NUMBER REFERRING TO ASSOCIATED PHASE |
| ←●→ | PEDESTRIAN PHASE |

EMERGENCY VEHICLE PREEMPTION SEQUENCE



PHASE DESIGNATION DIAGRAM

SCHEDULE OF QUANTITIES

| PAY ITEM DESCRIPTION | UNIT | RAINTREE ROAD |
|---|--------|---------------|
| PORTLAND CEMENT CONCRETE SIDEWALK 6 INCH | SQ FT | 207 |
| DETECTABLE WARNINGS | SQ FT | 30 |
| SIDEWALK REMOVAL | SQ FT | 207 |
| ENGINEER'S FIELD OFFICE, TYPE B | CAL MO | 0.3 |
| MOBILIZATION | L.SUM | 0.1 |
| TRAFFIC CONTROL AND PROTECTION, STANDARD 701601 | L.SUM | 0.1 |
| TRAFFIC CONTROL AND PROTECTION, STANDARD 701701 | L.SUM | 0.1 |
| TRAFFIC CONTROL AND PROTECTION, STANDARD 701801 | L.SUM | 0.1 |
| THERMOPLASTIC PAVEMENT MARKING - LINE 6" | FOOT | 134 |
| THERMOPLASTIC PAVEMENT MARKING - LINE 24" | FOOT | 24 |
| PAVEMENT MARKING REMOVAL | SQ FT | 66 |
| SERVICE INSTALLATION - GROUND MOUNTED | EACH | 1 |
| MAINTENANCE OF EXISTING TRAFFIC SIGNAL, INSTALLATION | EACH | 1 |
| GROUNDING EXISTING HANDHOLE FRAME AND COVER | EACH | 9 |
| ELECTRIC CABLE IN CONDUIT, SIGNAL, NO. 14 2C | FOOT | 804 |
| ELECTRIC CABLE IN CONDUIT, SIGNAL, NO. 14 3C | FOOT | 832 |
| ELECTRIC CABLE IN CONDUIT, LEAD-IN, NO. 14 1 PAIR | FOOT | 1118 |
| ELECTRIC CABLE IN CONDUIT, SERVICE, NO. 6 2 C | FOOT | 25 |
| ELECTRIC CABLE IN CONDUIT, EQUIPMENT GROUNDING CONDUCTOR, NO. 6 1C | FOOT | 687 |
| DRILL EXISTING HANDHOLE | EACH | 6 |
| PEDESTRIAN SIGNAL HEAD, LED, 1-FACE, BRACKET MOUNTED WITH COUNTDOWN TIMER | EACH | 4 |
| TRAFFIC SIGNAL BACKPLATE, LOUVERED, ALUMINUM | EACH | 2 |
| INDUCTIVE LOOP DETECTOR | EACH | 9 |
| DETECTOR LOOP, TYPE I | FOOT | 804 |
| LIGHT DETECTOR AMPLIFIER | EACH | 1 |
| PEDESTRIAN PUSH-BUTTON | EACH | 4 |
| MODIFY EXISTING CONTROLLER FOUNDATION | EACH | 1 |
| REMOVE ELECTRIC CABLE FROM CONDUIT | FOOT | 25 |
| REMOVE EXISTING TRAFFIC SIGNAL EQUIPMENT | EACH | 1 |
| ETHERNET SWITCH | EACH | 1 |
| FULL-ACTUATED CONTROLLER AND TYPE IV CABINET, SPECIAL | EACH | 1 |
| UNINTERRUPTIBLE POWER SUPPLY, SPECIAL | EACH | 1 |
| SIGNAL HEAD, LED, 1-FACE, 3-SECTION, BRACKET MOUNTED, RETROFIT | EACH | 9 |
| SIGNAL HEAD, LED, 1-FACE, 3-SECTION, MAST ARM MOUNTED, RETROFIT | EACH | 2 |
| SIGNAL HEAD, LED, 1-FACE, 5-SECTION, BRACKET MOUNTED, RETROFIT | EACH | 4 |
| EVP CONFIRMATION BEACON, LED RETROFIT | EACH | 3 |

THE TRAFFIC SIGNAL CONTROL EQUIPMENT FOR THIS PROJECT SHALL BE "ECONOLITE" TO MATCH THE EXISTING ADJACENT SYSTEM.

THE EMERGENCY VEHICLE PREEMPTION EQUIPMENT FOR THIS PROJECT SHALL BE OPTICOM AS REQUIRED BY THE CITY OF AURORA. LIGHT DETECTOR AMPLIFIERS SHALL BE OPTICOM MODEL 764 MULTIMODE PHASE SELECTORS.

THE END OF THE TRACER CABLE SHALL BE CONTINUOUS AND EXTEND INTO THE CONTROLLER CABINET.