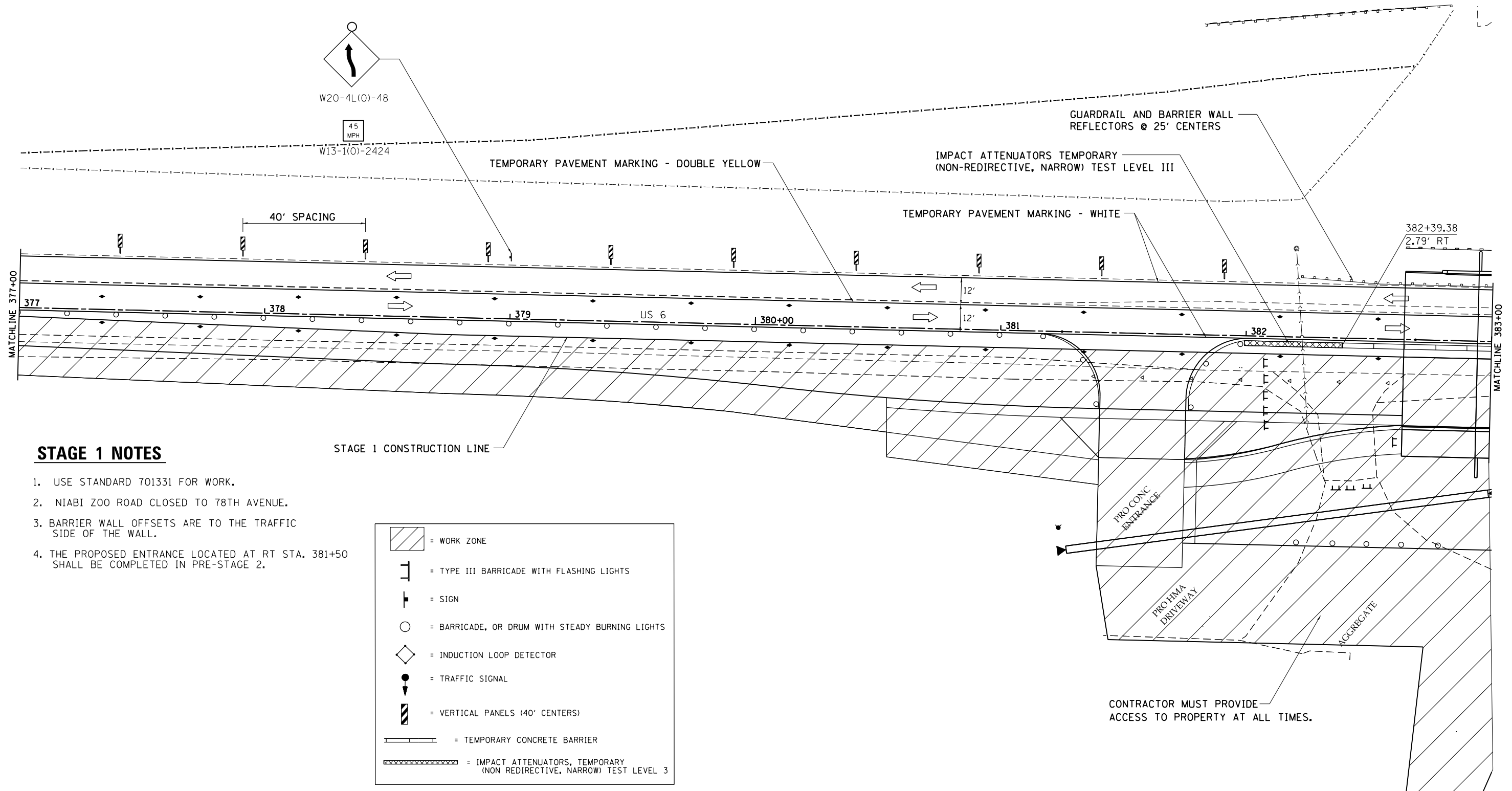


# STAGE 1



## STAGE 1 NOTES

1. USE STANDARD 701331 FOR WORK.
2. NIABI ZOO ROAD CLOSED TO 78TH AVENUE.
3. BARRIER WALL OFFSETS ARE TO THE TRAFFIC SIDE OF THE WALL.
4. THE PROPOSED ENTRANCE LOCATED AT RT STA. 381+50 SHALL BE COMPLETED IN PRE-STAGE 2.

	= WORK ZONE
	= TYPE III BARRICADE WITH FLASHING LIGHTS
	= SIGN
	= BARRICADE, OR DRUM WITH STEADY BURNING LIGHTS
	= INDUCTION LOOP DETECTOR
	= TRAFFIC SIGNAL
	= VERTICAL PANELS (40' CENTERS)
	= TEMPORARY CONCRETE BARRIER
	= IMPACT ATTENUATORS, TEMPORARY (NON REDIRECTIVE, NARROW) TEST LEVEL 3

FILE NAME =	USER NAME = renkesw	DESIGNED -	REVISED -
ct:\pw\work\p\dot\renkesw\dms36691\0208584-sht-staging.dgn		DRAWN -	REVISED -
Default	PLOT SCALE = 40.0000' / in.	CHECKED -	REVISED -
	PLOT DATE = Wed Dec 19 10:45:19 2012	DATE -	REVISED -

**STATE OF ILLINOIS  
DEPARTMENT OF TRANSPORTATION**

<b>US 6</b>	
<b>STAGE 1</b>	
SCALE: _____	SHEET _____ OF _____ SHEETS STA. _____ TO STA. _____

F.A.U. RTE.	SECTION	COUNTY	TOTAL SHEETS	SHEET NO.
5789	40BR	ROCK ISLAND	225	65
ILLINOIS FED. AID PROJECT				CONTRACT NO. 64341