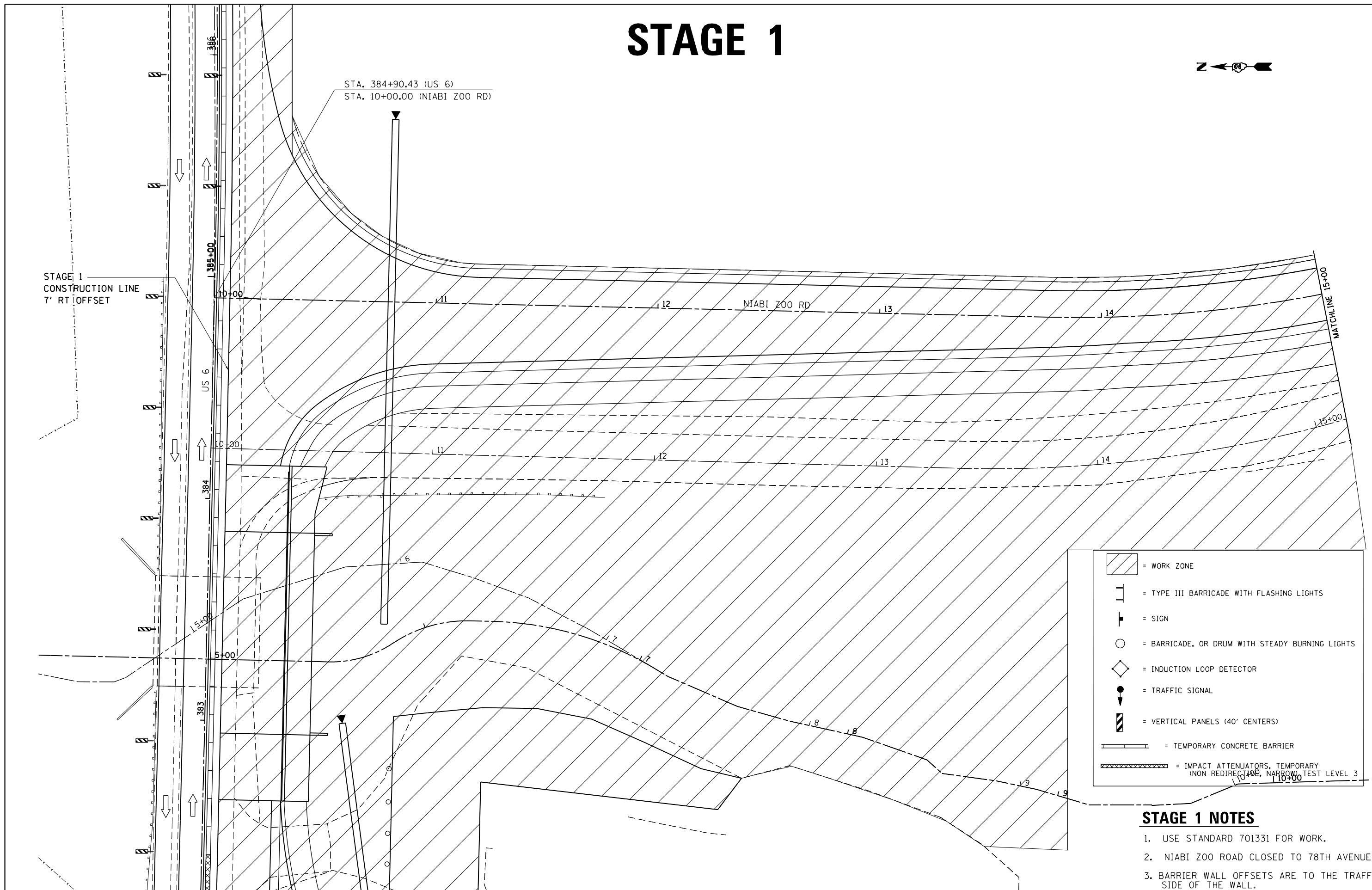


# STAGE 1



	= WORK ZONE
	= TYPE III BARRICADE WITH FLASHING LIGHTS
	= SIGN
	= BARRICADE, OR DRUM WITH STEADY BURNING LIGHTS
	= INDUCTION LOOP DETECTOR
	= TRAFFIC SIGNAL
	= VERTICAL PANELS (40' CENTERS)
	= TEMPORARY CONCRETE BARRIER
	= IMPACT ATTENUATORS, TEMPORARY (NON REDIRECTING, NARROW TEST LEVEL 3)

- STAGE 1 NOTES**
1. USE STANDARD 701331 FOR WORK.
  2. NIABI ZOO ROAD CLOSED TO 78TH AVENUE.
  3. BARRIER WALL OFFSETS ARE TO THE TRAFFIC SIDE OF THE WALL.

FILE NAME =	USER NAME = renkesw	DESIGNED -	REVISED -	<b>STATE OF ILLINOIS DEPARTMENT OF TRANSPORTATION</b>	<b>NIABI ZOO RD</b>		F.A.U. RTE.	SECTION	COUNTY	TOTAL SHEETS	SHEET NO.	
Default	ct:\pw\work\p\idot\renkesw\dms36691\0209584-sht-staging.dgn	DRAWN -	REVISED -		<b>STAGE 1</b>		5789	40BR	ROCK ISLAND	225	69	
	PLOT SCALE = 48.0000' / in.	CHECKED -	REVISED -		SCALE: _____	SHEET _____	OF _____	SHEETS	STA. _____	TO STA. _____	CONTRACT NO. <b>64341</b>	
	PLOT DATE = Wed Dec 19 10:46:55 2012	DATE -	REVISED -		ILLINOIS FED. AID PROJECT							