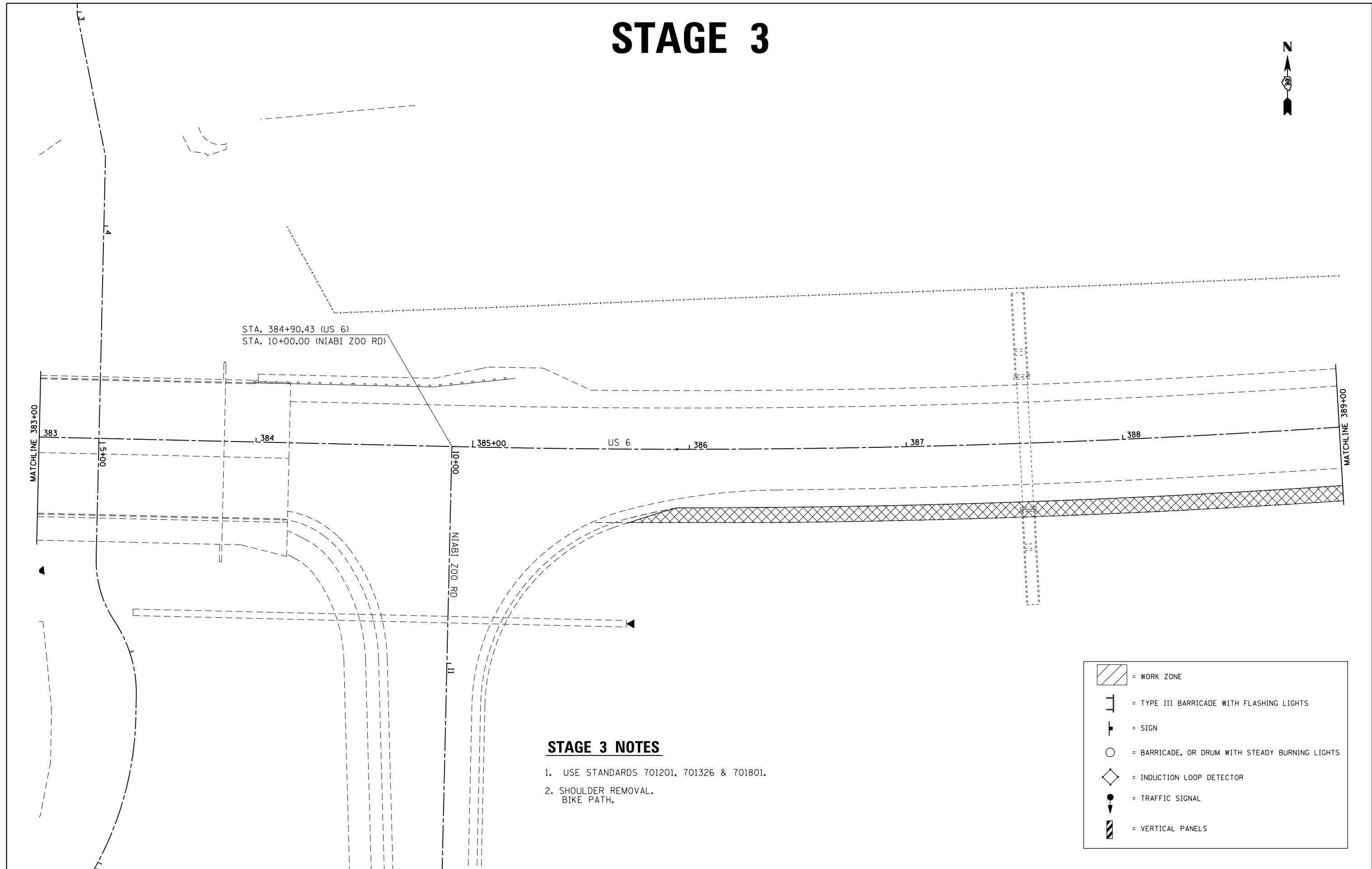


# STAGE 3



STA. 384+90.43 (US 6)  
STA. 10+00.00 (NIABI ZOO RD)

### STAGE 3 NOTES

1. USE STANDARDS 701201, 701326 & 701801.
2. SHOULDER REMOVAL.  
BIKE PATH.

	= WORK ZONE
	= TYPE III BARRICADE WITH FLASHING LIGHTS
	= SIGN
	= BARRICADE, OR DRUM WITH STEADY BURNING LIGHTS
	= INDUCTION LOOP DETECTOR
	= TRAFFIC SIGNAL
	= VERTICAL PANELS

FILE NAME =	USER NAME = renkesw	DESIGNED -	REVISED -
ci:\pw\work\p\dot\renkesw\dms36691\0205584-sht-stagrn.dgn		DRAWN -	REVISED -
Default	PLOT SCALE = 40.0000' / in.	CHECKED -	REVISED -
	PLOT DATE = Wed Dec 19 10:53:26 2012	DATE -	REVISED -

**STATE OF ILLINOIS  
DEPARTMENT OF TRANSPORTATION**

<b>US 6</b>	
<b>STAGE 3</b>	
SCALE: _____	SHEET _____ OF _____ SHEETS
STA. _____	TO STA. _____

F.A.U. RTE.	SECTION	COUNTY	TOTAL SHEETS	SHEET NO.
5789	40BR	ROCK ISLAND	225	82
ILLINOIS FED. AID PROJECT				CONTRACT NO. 64341