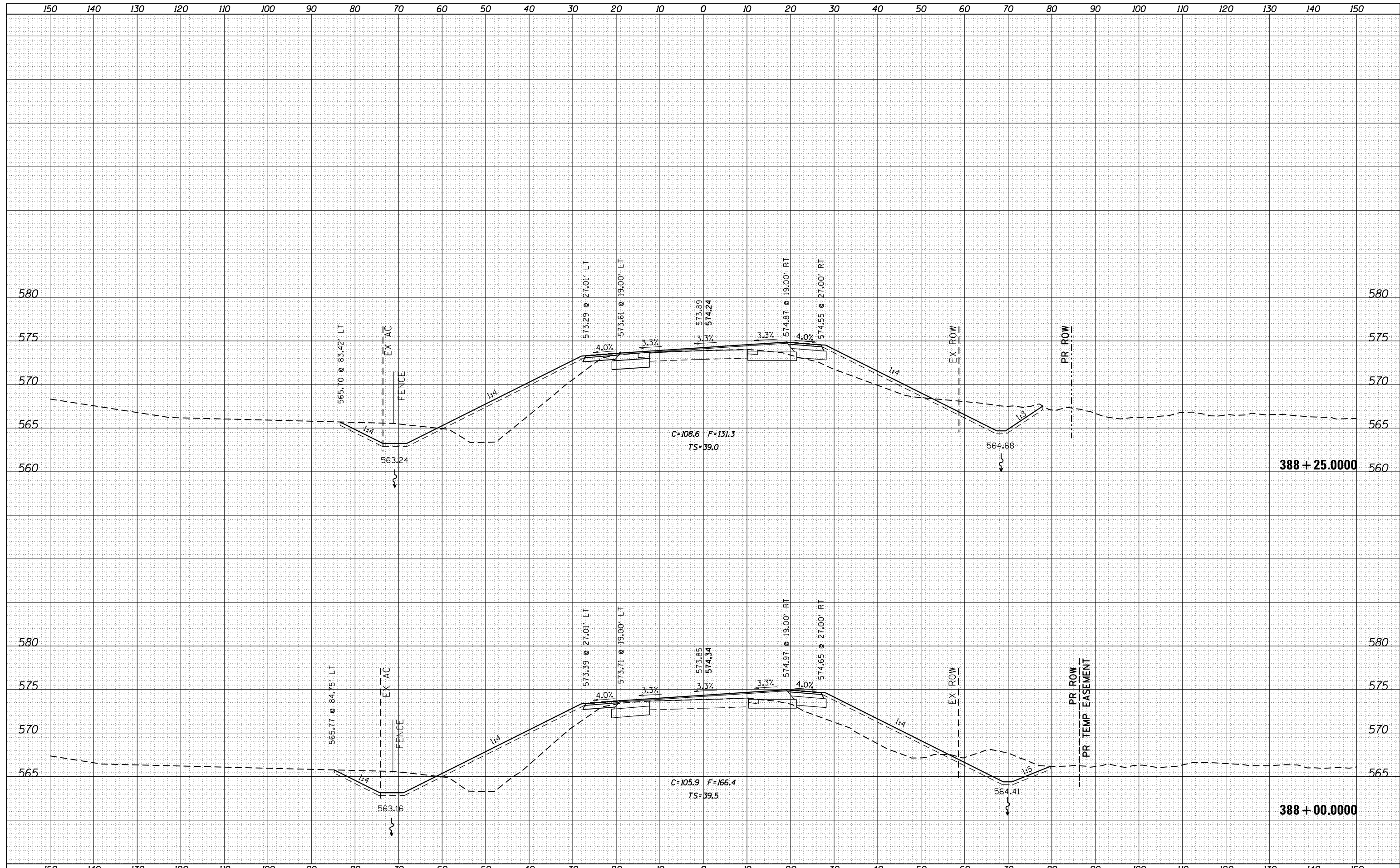


DATE	
BY	
FINAL SURVEY	SURVEYED
NOTE BOOK	PLOTTED
NO.	TEMPLATE
	AREAS CHECKED

DATE	
BY	
ORIGINAL SURVEY	SURVEYED
NOTE BOOK	PLOTTED
NO.	TEMPLATE
	AREAS CHECKED



FILE NAME =	USER NAME = renkesrw	DESIGNED -	REVISIED -	STATE OF ILLINOIS DEPARTMENT OF TRANSPORTATION	U.S. 6 CROSS SECTIONS	F.A.U. RTE.	SECTION	COUNTY	TOTAL SHEETS	SHEET NO.	
Default	Plot Scale = 20.0000' / in.	CHECKED -	REVISIED -			5789	40BR	ROCK ISLAND	225	196	
	PLOT DATE = Thu Dec 20 09:48:52 2012	DATE -	REVISIED -			CONTRACT NO. 64341					
						ILLINOIS FED. AID PROJECT					