

BY	DATE

BY	DATE

FILE NAME = SA:\JUL163800-6399\6345\025\1\635\635+00.00.dgn



1170 SOUTH HOBULT ROAD
JOLIET, ILLINOIS 60431
(815) 744-4200

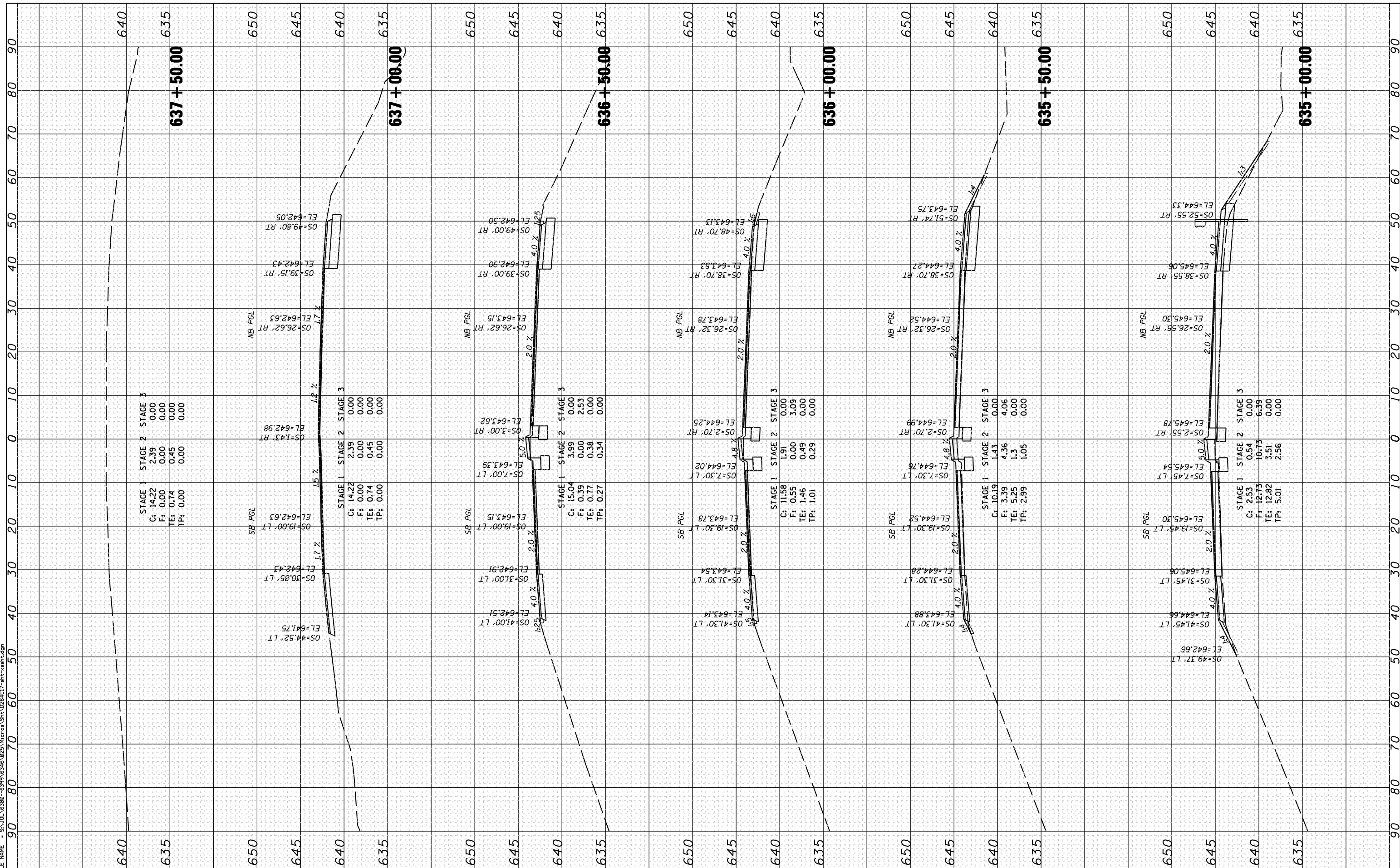
USER NAME = dennissw	DESIGNED - VLF	REVISED -
MODEL NAME = Default	DRAWN - DJW	REVISED -
PLOT SCALE = 20.0000' / IN.	CHECKED - MAG	REVISED -
PLOT DATE = 10/12/2012	DATE - 10-12-12	REVISED -

**STATE OF ILLINOIS
DEPARTMENT OF TRANSPORTATION**

CROSS SECTIONS

SCALE: 10H 5V SHEET 6 OF 8 SHEETS STA. 635+00.00 TO STA. 637+50.00

F.A.P. RTE. 646	SECTION 101 BR-3	COUNTY WHITESIDE	TOTAL SHEETS 113	SHEET NO. 109
ILLINOIS FED. AID PROJECT			CONTRACT NO. 64C17	



STAGE 1 STAGE 2 STAGE 3

C: 14.22	2.39	0.00
F: 0.00	0.00	0.00
TE: 0.74	0.45	0.00
TP: 0.00	0.00	0.00

STAGE 1 STAGE 2 STAGE 3

C: 14.22	2.39	0.00
F: 0.00	0.00	0.00
TE: 0.74	0.45	0.00
TP: 0.00	0.00	0.00

STAGE 1 STAGE 2 STAGE 3

C: 15.04	3.99	0.00
F: 0.39	0.00	2.53
TE: 0.77	0.38	0.00
TP: 0.27	0.34	0.00

STAGE 1 STAGE 2 STAGE 3

C: 11.58	1.91	0.00
F: 0.55	0.00	3.09
TE: 1.46	0.49	0.00
TP: 1.01	0.29	0.00

STAGE 1 STAGE 2 STAGE 3

C: 10.19	1.43	0.00
F: 3.39	4.36	4.06
TE: 5.25	1.3	0.00
TP: 2.99	1.05	0.00

STAGE 1 STAGE 2 STAGE 3

C: 2.53	0.54	0.00
F: 12.73	16.73	6.39
TE: 12.82	3.51	0.00
TP: 5.01	2.56	0.00