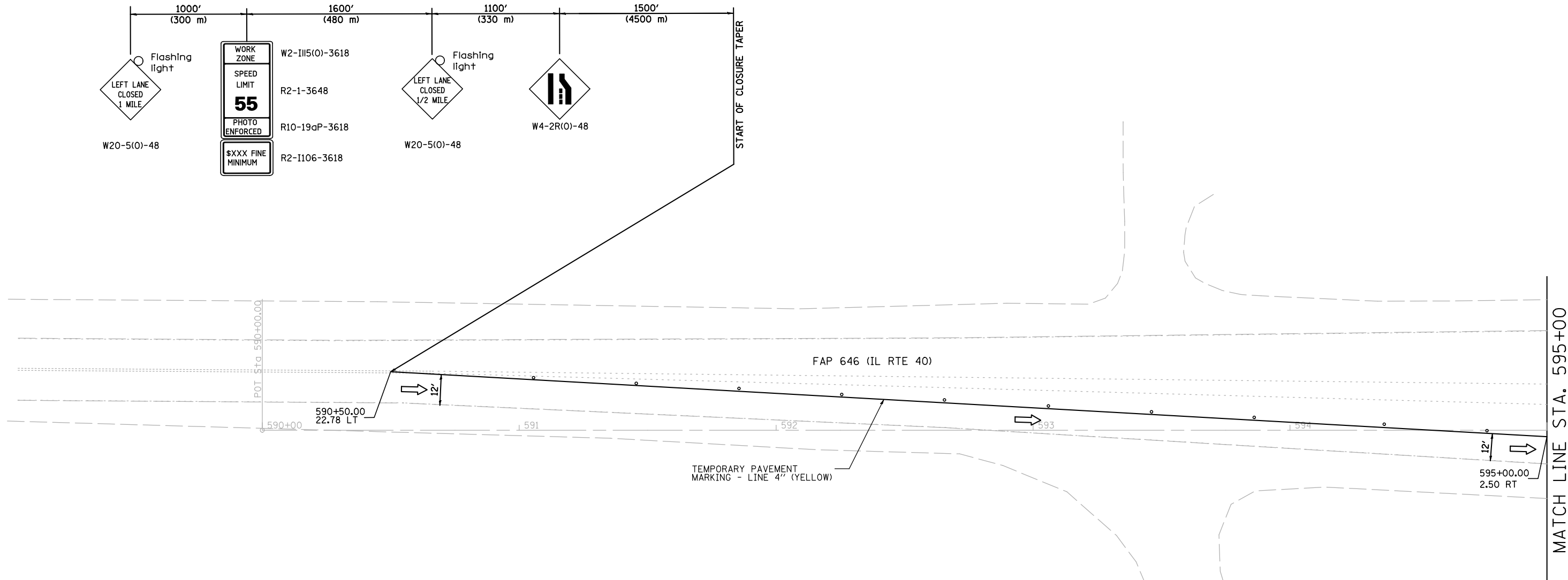


STAGE 2

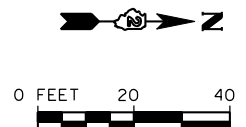


STAGE 2 NOTES:

1. REFER TO STANDARD 701416 FOR ADDITIONAL SIGNS AND DEVICES NOT SHOWN.
2. RELOCATE TEMPORARY CONCRETE BARRIER ACCORDING TO STANDARD 704001.
3. CONSTRUCT WEST SIDE OF BRIDGE AND ROADWAY INCLUDING SHOULDERS AND GUARDRAIL.
4. INSTALL PERMANENT PAVEMENT MARKINGS USING STANDARD 701426.

LEGEND

- DRUM WITH STEADY BURNING MONODIRECTIONAL LIGHT AT 40' C-C SPACING
- ⊥ BARRICADE TYPE III WITH FLASHING LIGHTS, QUANTITY AS REQUIRED FOR PROPER CLOSURE TO SATISFACTION OF THE ENGINEER
- TEMPORARY PAVEMENT MARKING
- ▨ IMPACT ATTENUATORS, TEMPORARY (NON-REDIRECTIVE), TEST LEVEL 3
- ↑ TRAFFIC SIGN
- ➔ DIRECTION OF TRAFFIC
- ▨ WORK ZONE



FILE NAME = s:\p1\6380--6395\6346\025\macro\sh\0264C17-sh2-stageing12.dgn



USER NAME = vanessam	DESIGNED - VLF	REVISED -
	DRAWN - DJW	REVISED -
PLOT SCALE = 40.0000' / IN.	CHECKED - MAG	REVISED -
PLOT DATE = 10/15/2012	DATE - 10-12-12	REVISED -

**STATE OF ILLINOIS
DEPARTMENT OF TRANSPORTATION**

**MAINTENANCE OF TRAFFIC
STAGE 2**

SCALE: 1" = 20' SHEET 11 OF 21 SHEETS STA. 590+00 TO STA. 595+00

F.A.P. RTE.	SECTION	COUNTY	TOTAL SHEETS	SHEET NO.
646	101 BR-3	WHITESIDE	113	41
FED. ROAD DIST. NO. 2 ILLINOIS FED. AID PROJECT			CONTRACT NO. 64C17	