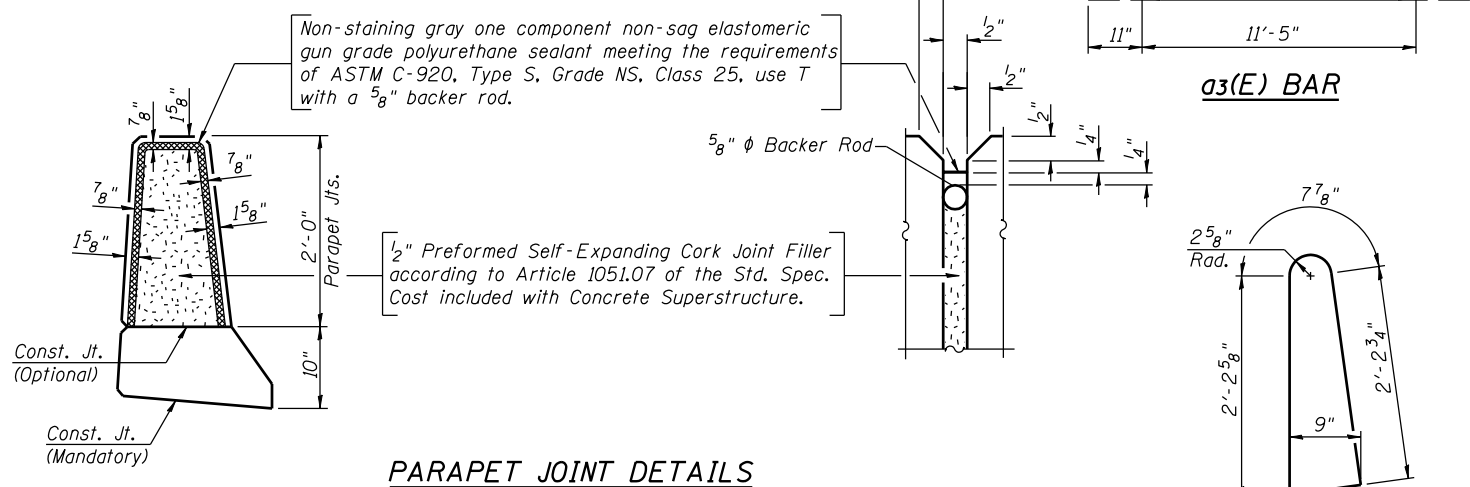


**MINIMUM BAR LAP**  
(Parapet)  
#4 bar = 2'-0"  
#8 bar = 5'-2"

**INSIDE ELEVATION OF PARAPET**



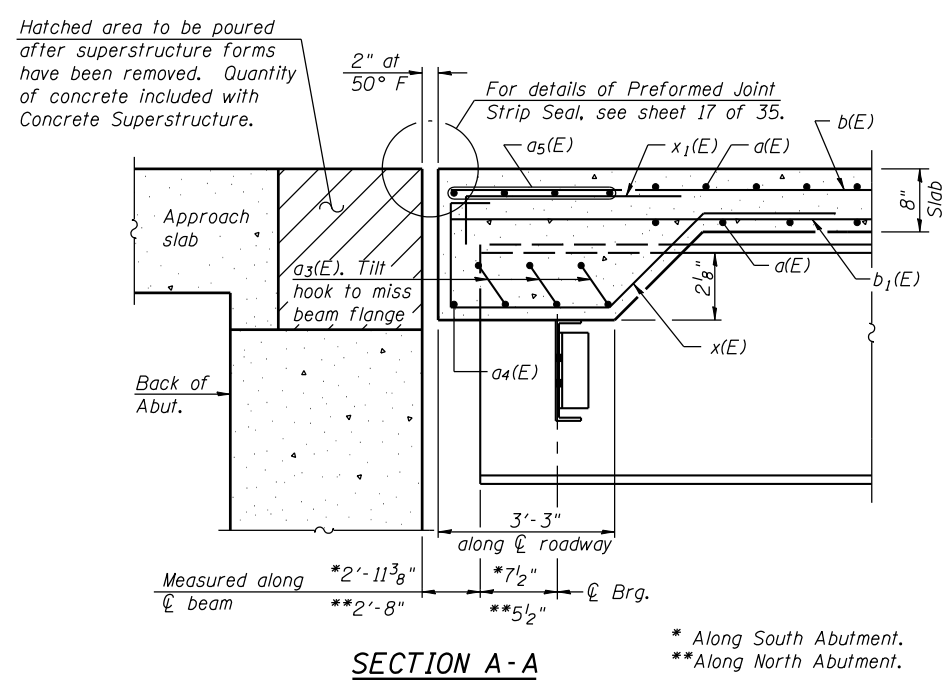
Non-staining gray one component non-sag elastomeric gun grade polyurethane sealant meeting the requirements of ASTM C-920, Type S, Grade NS, Class 25, use T with a 5/8" backer rod.

1/2" Preformed Self-Expanding Cork Joint Filler according to Article 1051.07 of the Std. Spec. Cast included with Concrete Superstructure.

**SUPERSTRUCTURE BILL OF MATERIAL**

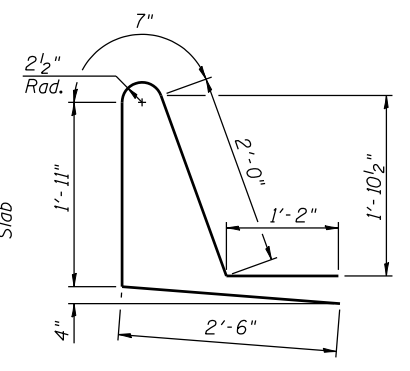
Bar	No.	Size	Length	Shape
a(E)	512	#5	39'-5"	
a2(E)	264	#6	6'-6"	
a3(E)	84	#8	13'-3"	
a4(E)	16	#8	28'-9"	
a5(E)	80	#5	21'-11"	
a6(E)	3	#5	6'-10"	
a7(E)	3	#5	6'-5"	
b(E)	345	#5	25'-8"	
b1(E)	328	#5	20'-2"	
c1(E)	144	#5	1'-7"	
c2(E)	72	#5	35'-8"	
d(E)	156	#5	5'-7"	
d1(E)	156	#5	8'-2"	
e(E)	56	#4	17'-3"	
e1(E)	6	#4	25'-0"	
e2(E)	6	#8	27'-0"	
x(E)	320	#5	7'-11"	
x1(E)	192	#5	4'-1"	
Concrete Superstructure				Cu. Yd. 260
Reinforcement Bars, Epoxy Coated				Pound 55,600

Bars indicated thus 1 x3 - #8 etc. indicates 1 line of bars with 3 lengths per line.



Hatched area to be poured after superstructure forms have been removed. Quantity of concrete included with Concrete Superstructure.

For details of Preformed Joint Strip Seal, see sheet 17 of 35.

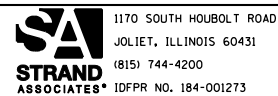


**BAR d1(E)**

**BAR x1(E)**

**BAR x(E)**

FILE NAME = S:\JOL\63300-6399\6346\025\Micro\Sha\Structural\Plans\0980015-64C17-013-SUPDET.dgn



1170 SOUTH HOUBOLT ROAD  
JOLIET, ILLINOIS 60431  
(815) 744-4200  
IDFPR NO. 184-001273

USER NAME = brianf  
DESIGNED - RRD  
CHECKED - AJS  
DRAWN - BJF  
CHECKED - RRD

REVISED  
REVISED  
REVISED  
REVISED

**STATE OF ILLINOIS  
DEPARTMENT OF TRANSPORTATION**

**SUPERSTRUCTURE DETAILS  
STRUCTURE NO. 098-0015**  
SHEET NO. 13 OF 35 SHEETS

F.A.P. R.T.E.	SECTION	COUNTY	TOTAL SHEETS	SHEET NO.
646	101 BR-3	WHITESIDE	113	69

CONTRACT NO. 64C17  
ILLINOIS FED. AID PROJECT