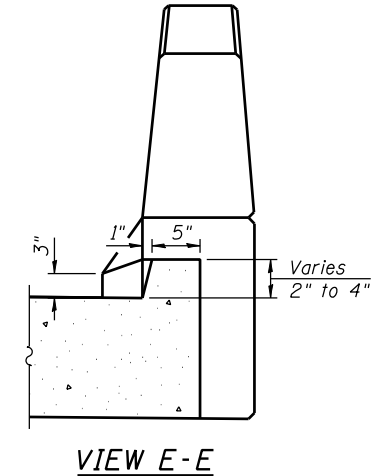
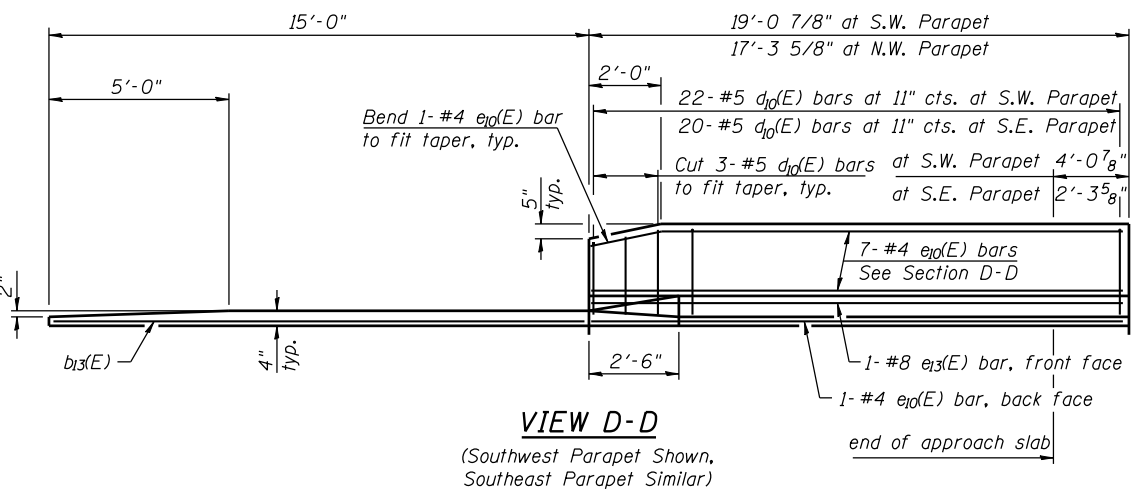
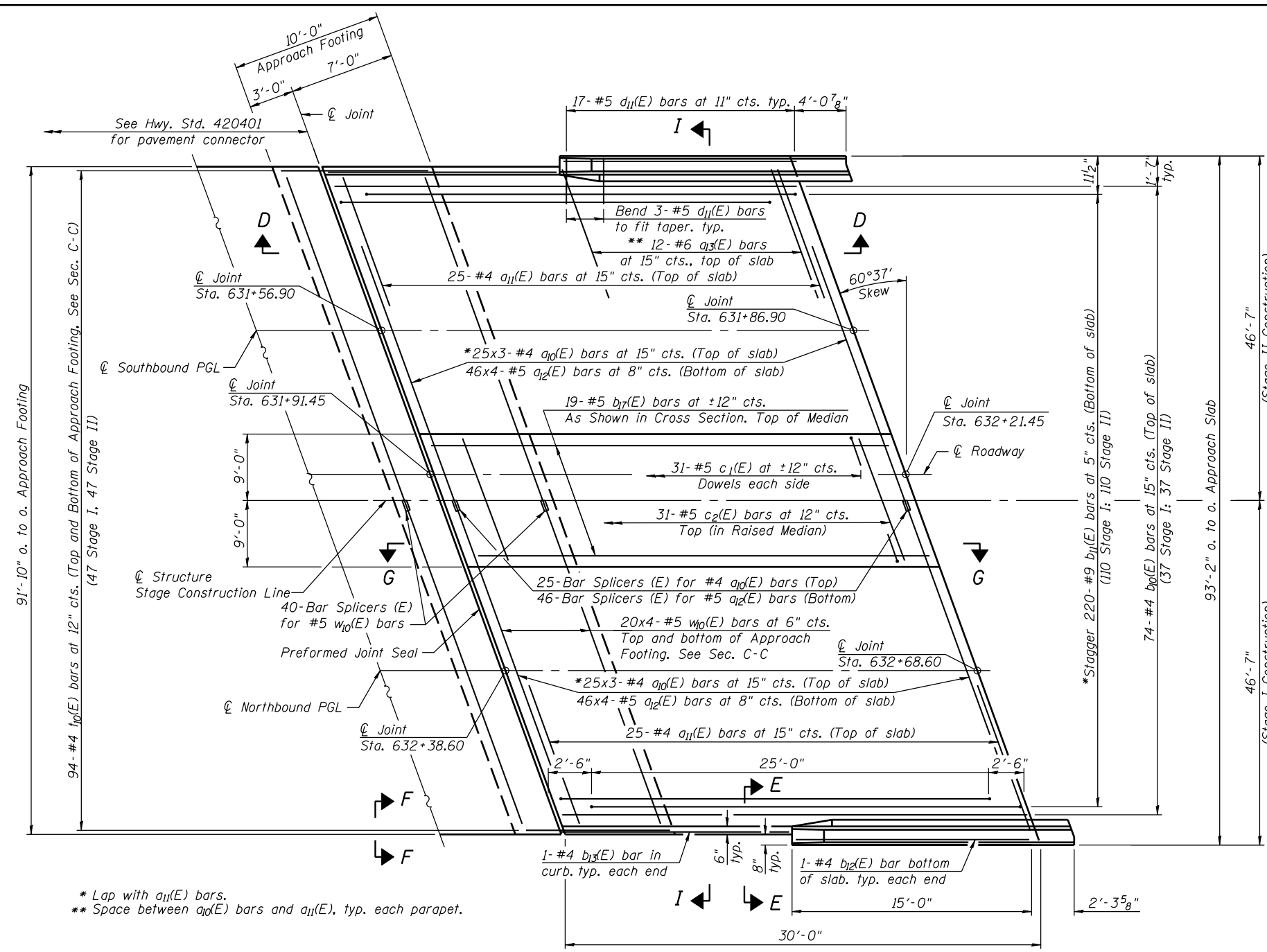


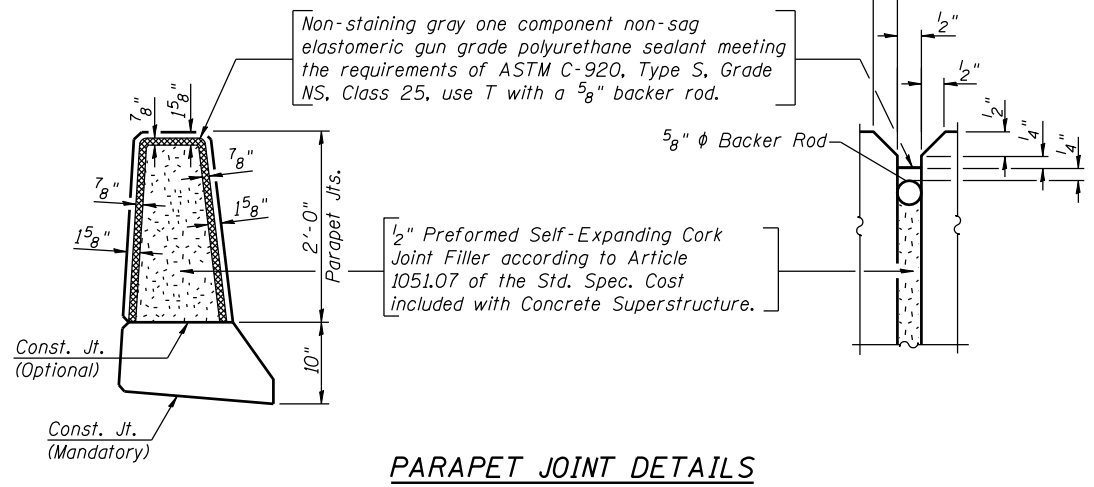
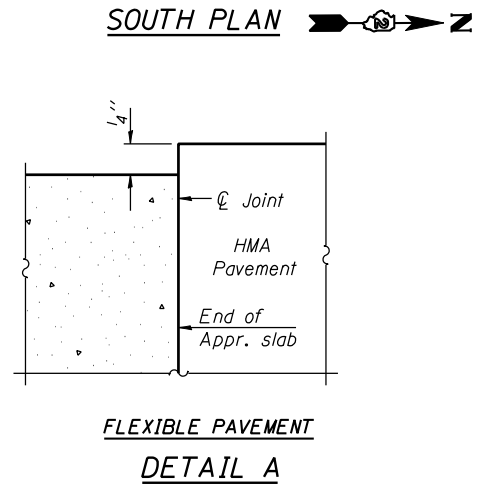
Notes:
 See Sheet 16 of 35 for Sections G-G, H-H and I-I.
 $a_{10}(E)$ and $a_{11}(E)$ bar spacings measured along \hat{C} Rdwy.
 Bars indicated thus 20x3-#5 etc. indicates 20 lines of bars with 3 lengths per line.
 Tilt #9 $b_{11}(E)$ bars as required to maintain clearance.
 See Sheet 14 of 35 for bar lap requirements.



**SOUTH APPROACH
BILL OF MATERIAL**

Bar	No.	Size	Length	Shape
$a_{10}(E)$	150	#4	25'-6"	—
$a_{11}(E)$	50	#4	25'-11"	—
$a_{12}(E)$	368	#5	25'-9"	—
$a_{13}(E)$	24	#6	6'-6"	—
$b_{10}(E)$	74	#4	29'-8"	—
$b_{11}(E)$	220	#9	29'-9"	—
$b_{12}(E)$	2	#4	14'-8"	—
$b_{13}(E)$	2	#4	15'-10"	—
$b_{17}(E)$	19	#5	9'-1"	—
$c_1(E)$	62	#5	1'-7"	—
$c_2(E)$	31	#5	36'-4"	—
$d_{10}(E)$	42	#5	5'-7"	—
$d_{11}(E)$	34	#5	7'-11"	—
$e_{10}(E)$	16	#4	14'-8"	—
$e_{13}(E)$	2	#8	14'-8"	—
$t_{10}(E)$	188	#4	20'-0"	—
$w_{10}(E)$	320	#5	25'-6"	—
Concrete Superstructure	Cu. Yd.		176	
Concrete Structures	Cu. Yd.		58	
Reinforcement Bars, Epoxy Coated	Pound		39,520	***
Reinforcement Bars, Epoxy Coated	Pound		11,030	****

*** Included in Superstructure quantity
 **** Included in Substructure quantity



FILE NAME = s:\p1\6380--6395\6346\025\Micro\Sh\Structural\Plans\0980015-64C17-014-BAP.dgn

STRAND ASSOCIATES
 1170 SOUTH HOUBOLT ROAD
 JOLIET, ILLINOIS 60431
 (815) 744-4200
 IDFPR NO. 184-001273

USER NAME = brianf
 DESIGNED - MJD
 CHECKED - AJS
 PLOT SCALE =
 DRAWN - BJF
 CHECKED - RRD
 PLOT DATE = 10/12/2012

DESIGNED - MJD
 CHECKED - AJS
 DRAWN - BJF
 CHECKED - RRD

REVISED
 REVISED
 REVISED
 REVISED

**STATE OF ILLINOIS
DEPARTMENT OF TRANSPORTATION**

**BRIDGE APPROACH PAVEMENT (2 OF 3)
STRUCTURE NO. 098-0015**

SHEET NO. 15 OF 35 SHEETS

F.A.P. RTE.	SECTION	COUNTY	TOTAL SHEETS	SHEET NO.
646	101 BR-3	WHITESIDE	113	71

CONTRACT NO. 64C17
 ILLINOIS FED. AID PROJECT