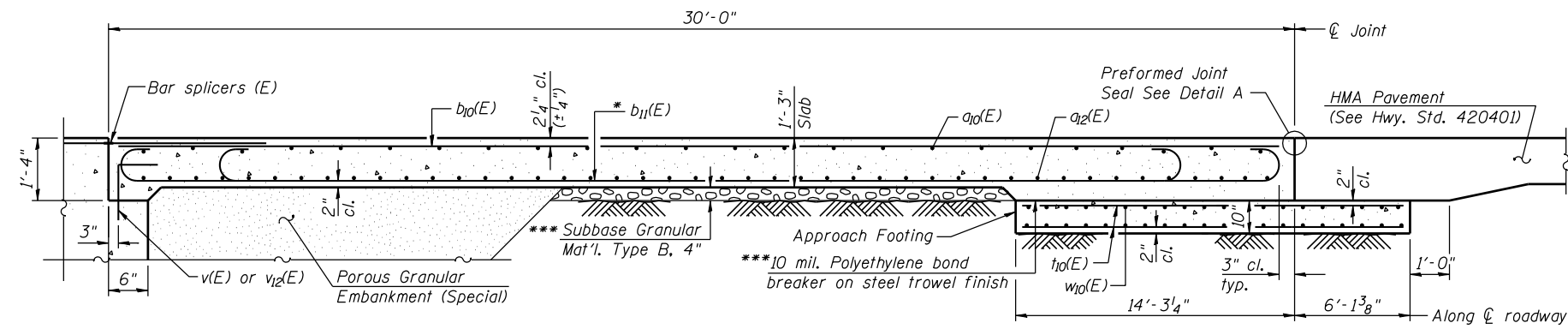
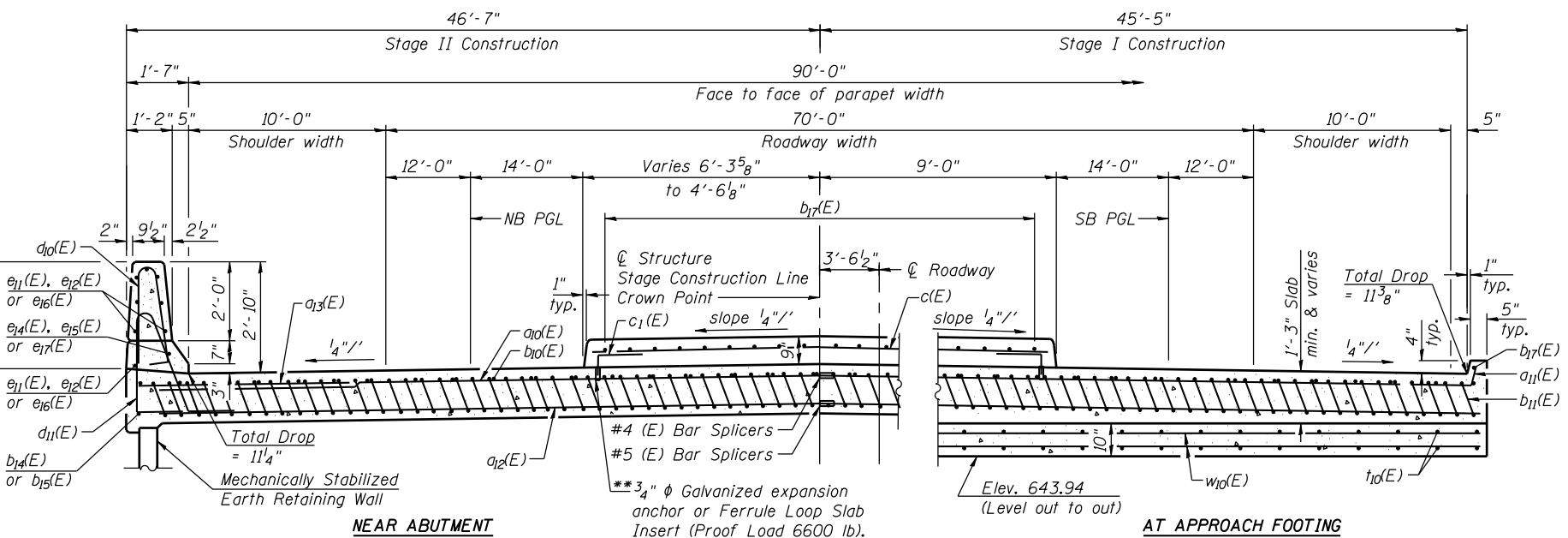
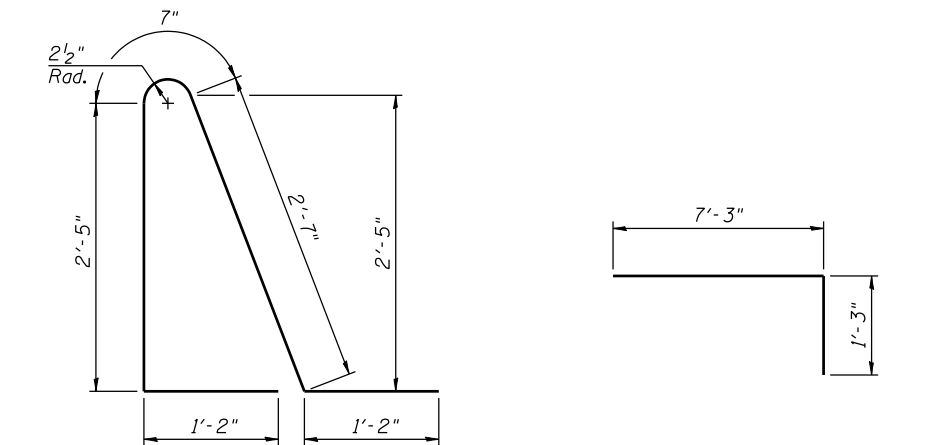
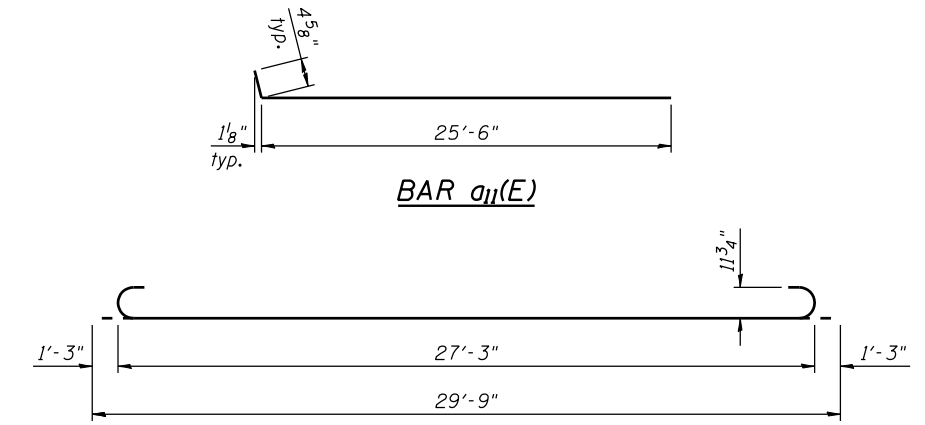


Notes:
 See Sheet 15 of 35 for Detail A.
 Approach slab and parapet concrete shall be paid for as Concrete Superstructure.
 Approach footing concrete shall be paid for as Concrete Structures.
 Reinforcement shall be paid for as Reinforcement Bars, Epoxy Coated.
 For $v_2(E)$ bar details, See Sheet 28 of 35.
 The approach footing maximum applied service bearing pressure (Q_{max}) = 2.0 ksf.
 For bar splicer details, See Sheet 32 of 35.
 Cost of excavation for approach footing included with Concrete Structures.
 For Porous Granular Embankment (Special) and drainage treatment details, See Sheet 28 of 35.
 For additional parapet details, See Sheet 14 and 15 of 35.
 See Sheet 13 of 35 for $d(E)$ and $c_1(E)$ bend diagrams.

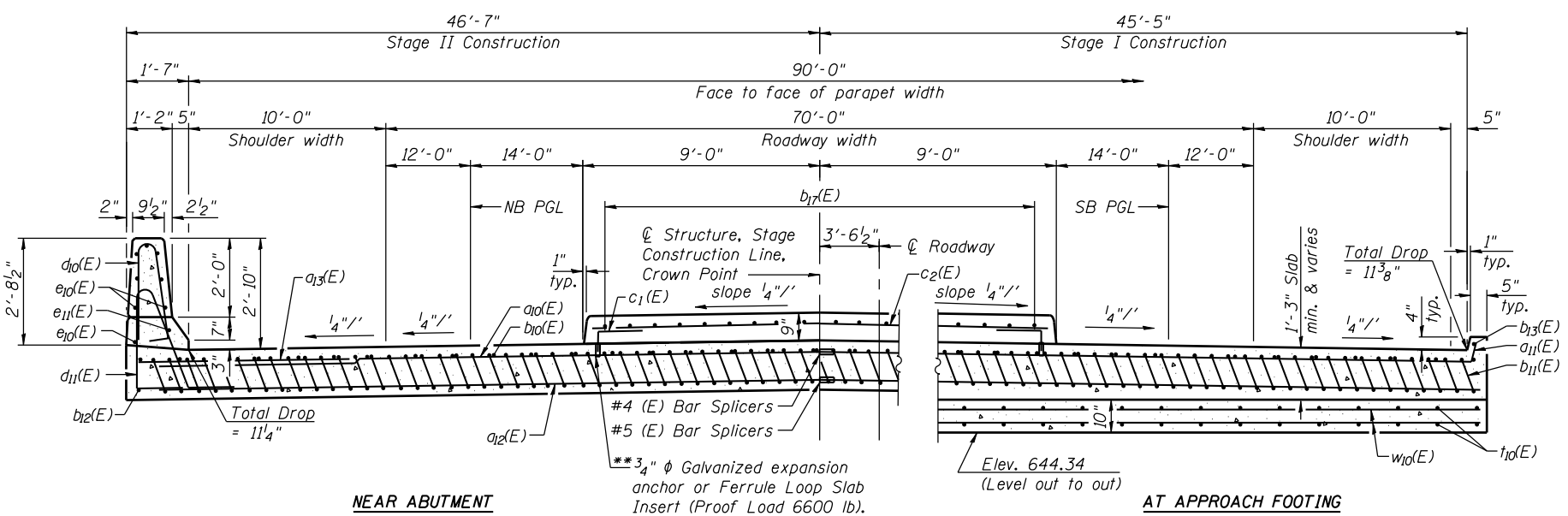


SECTION G-G



SECTION H-H

(North Approach - Looking South)



SECTION I-I

(South Approach - Looking South)

* Tilt #9 $b_{11}(E)$ bars as required to maintain clearance.

** The cost of expansion anchors/inserts is included in the cost of Reinforcement Bars, Epoxy Coated.

*** Cost included with Concrete Superstructure.

FILE NAME = s:\p1\6380--6395\6346\025\Micro\Sh\Structural\Plans\0980015-64C17-014-BAP.dgn