

PILE BAY BAR SPACING TABLE

Bay	A	B
1	9 7/8"	5 bars at 12" cts.
2	8 1/8"	4 bars at 11" cts.
3	8 5/8"	5 bars at 12" cts.
4	9 3/8"	2 bars at 12" cts.
5	8 5/8"	3 bars at 12" cts.
6 to 26	8"	3 bars at 10" cts.
27 to 31	8"	3 bars at 10" cts.
32	9 3/8"	3 bars at 12" cts.
33	8 5/8"	2 bars at 12" cts.
34	9 3/8"	5 bars at 12" cts.
35	12"	5 bars at 12" cts.
36	9 3/8"	1 bar
37	10"	4 bars at 12" cts.
38	8 1/8"	2 bars at 11" cts.
39	8 1/4"	4 bars at 11" cts.
40	8 1/4"	2 bars at 12" cts.
41	7 3/4"	4 bars at 12" cts.
42	10 3/4"	2 bars at 12" cts.
43	10 1/4"	3 bars at 12" cts.
44	8 3/4"	3 bars at 9 1/2" cts.
45	8 1/8"	5 bars at 11" cts.
46	8"	5 bars at 12" cts.
47	9"	4 bars at 11" cts.
48	8 3/4"	4 bars at 12" cts.
49	9 1/4"	1 bar

For Numbering of Bays See Sheet 21 of 35.
See Pile Bay Bar Spacing Plan for dimensions.

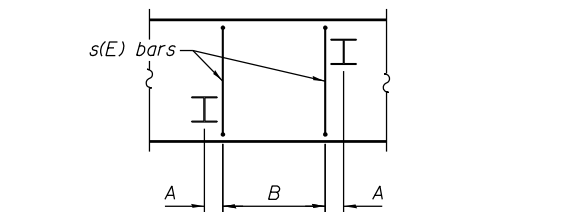
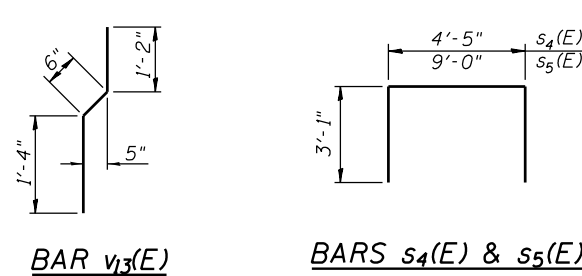
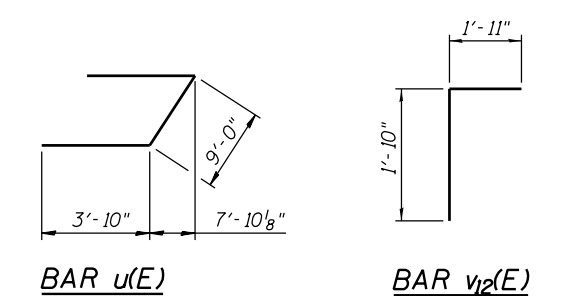
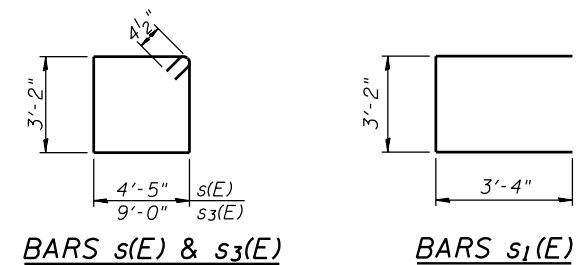
NORTH ABUTMENT BILL OF MATERIAL

Bar	No.	Size	Length	Shape
p(E)	72	#7	34'-8"	
s(E)	156	#4	15'-11"	
s1(E)	24	#4	9'-10"	
s3(E)	2	#6	25'-1"	
s4(E)	348	#4	10'-7"	
s5(E)	6	#4	15'-1"	
h25(E)	24	#7	28'-6"	
h26(E)	8	#7	22'-7"	
h27(E)	12	#7	30'-10"	
h28(E)	36	#6	33'-9"	
h29(E)	36	#5	33'-5"	
h30(E)	8	#7	31'-11"	
u(E)	16	#6	16'-8"	
v12(E)	188	#5	3'-9"	
v13(E)	188	#4	3'-0"	
v14(E)	376	#4	5'-0"	
Porous Granular Embankment		Cu. Yd.	448	
Structure Excavation Removal and Disposal of Unsuitable Material for Structures		Cu. Yd.	973	
Concrete Structures		Cu. Yd.	173	
Reinforcement Bars, Epoxy Coated		Pound	18,410	
Furnishing Steel Piles, HP 12x53		Foot	3,540	
Driving Piles		Foot	3,540	
Test Pile, Steel HP 12x53		Each	1	
Concrete Sealer		Sq. Ft.	2,110	

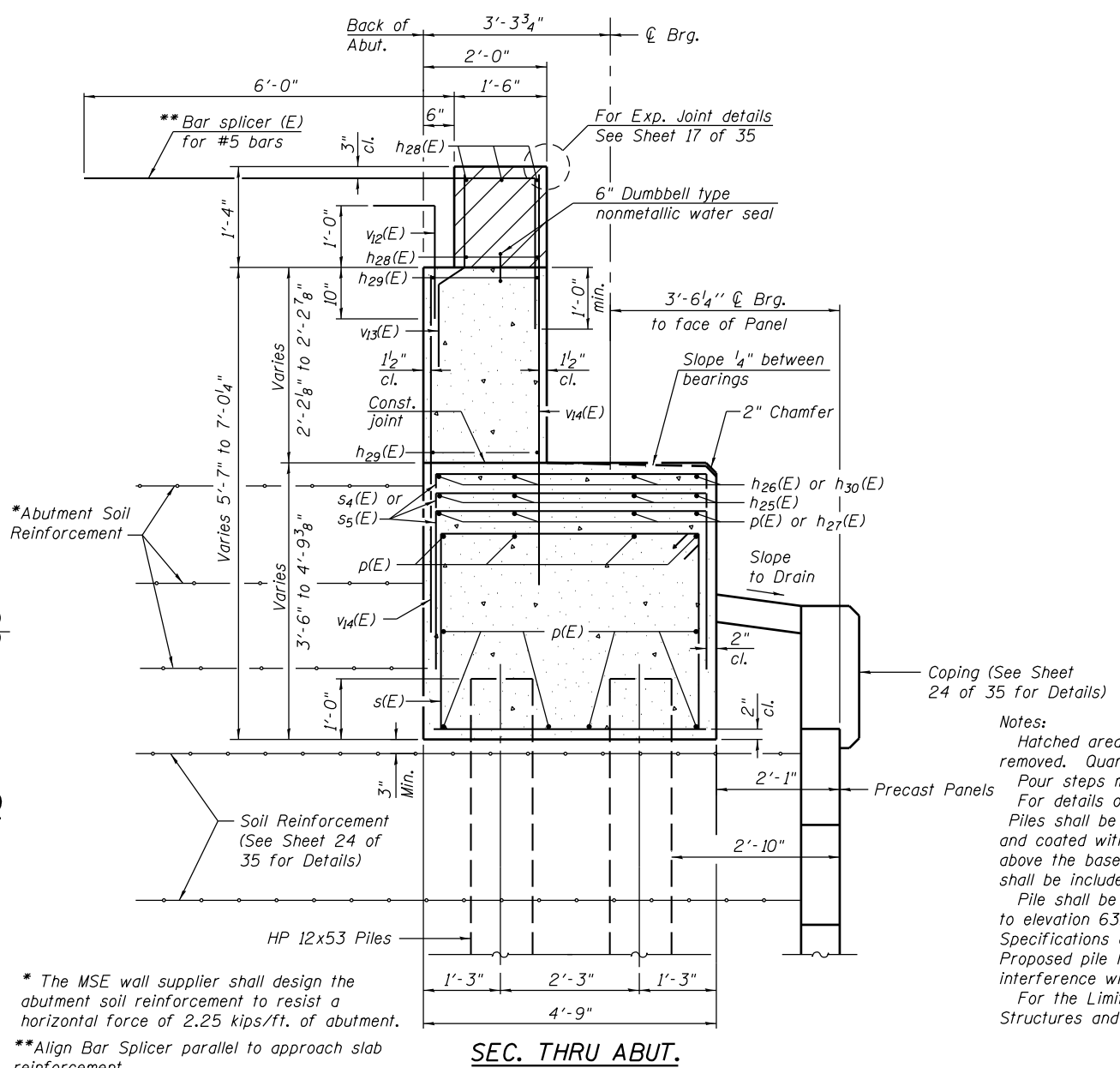
Structure Excavation quantity includes excavation for MSE Wall.

PILE DATA

Type: HP 12x53
Nominal Required Bearing: 145 Kips
Factored Resistance Available: 80 Kips
Est. Length: 59 Feet per Pile
No. Production Piles: 60
No. Test Piles: 1

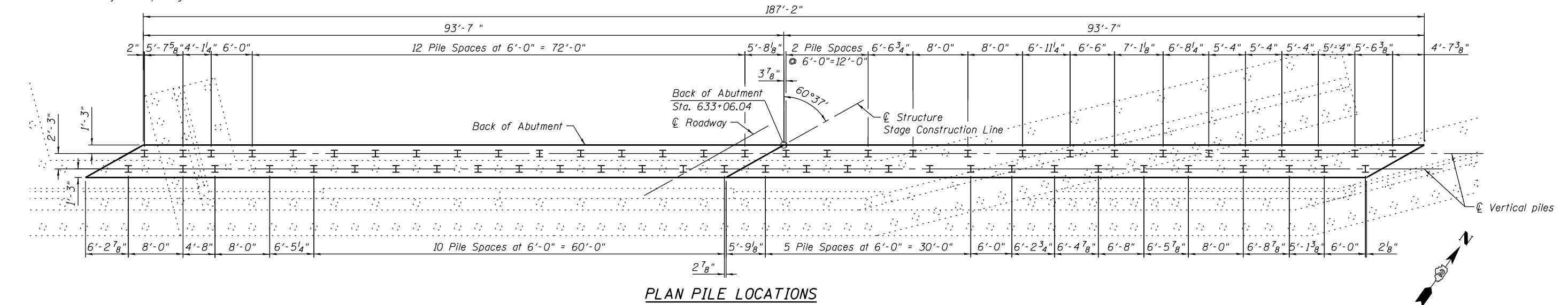


PILE BAY BAR SPACING PLAN
See Pile Bay Bar Spacing Table



* The MSE wall supplier shall design the abutment soil reinforcement to resist a horizontal force of 2.25 kips/ft. of abutment.
**Align Bar Splicer parallel to approach slab reinforcement.

Notes:
Hatched area to be poured after superstructure false work has been removed. Quantity of concrete included with Concrete Superstructure. Pour steps monolithically with cap.
For details of Bar Splicers, see sheet 32 of 35.
Piles shall be driven prior to placement of the reinforced select fill and coated with coal tar epoxy from the bottom of the select fill to 1" above the base of the abutment. The cost of the coal tar epoxy coating shall be included with the cost of the Furnishing Piles.
Pile shall be driven through 1'-6" min. diameter precored holes extending to elevation 632.8 according to Article 512.09(c) of the Standard Specifications and includes coring thru existing reinforce concrete footing. Proposed pile locations are to be located by the contractor to avoid interference with the existing piling. Cost included in Driving Piles.
For the Limits of Removal and Disposal of Unsuitable Material for Structures and Porous Gradual Embankment, see Sheet 24 of 35.



FILE NAME = S:\JUL6300-6399\6346\025\Micro\SHA\Structural\Plans\0980015-64C17-021-NABUT.dgn