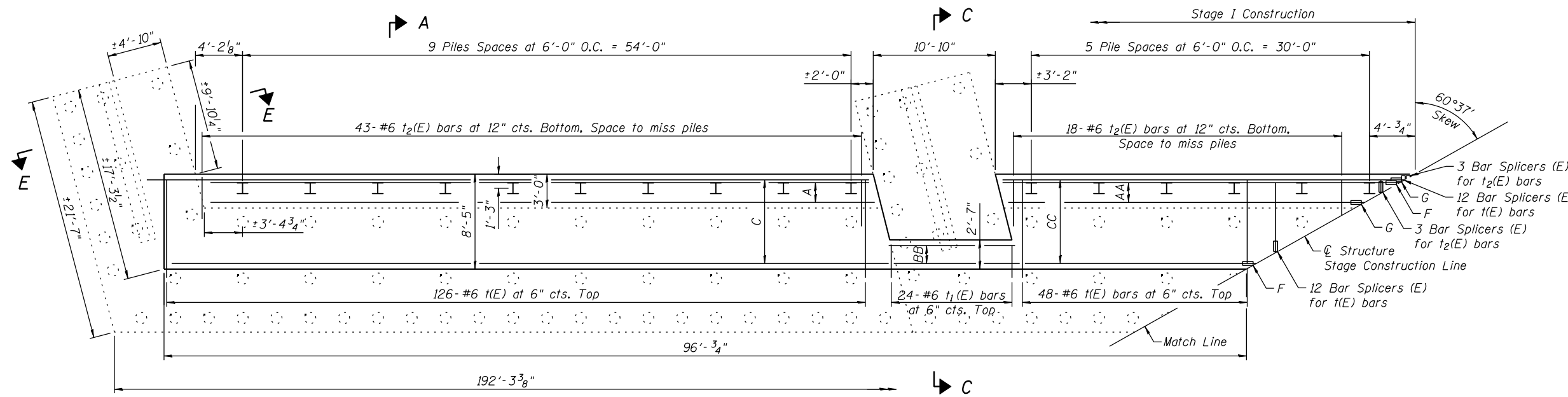


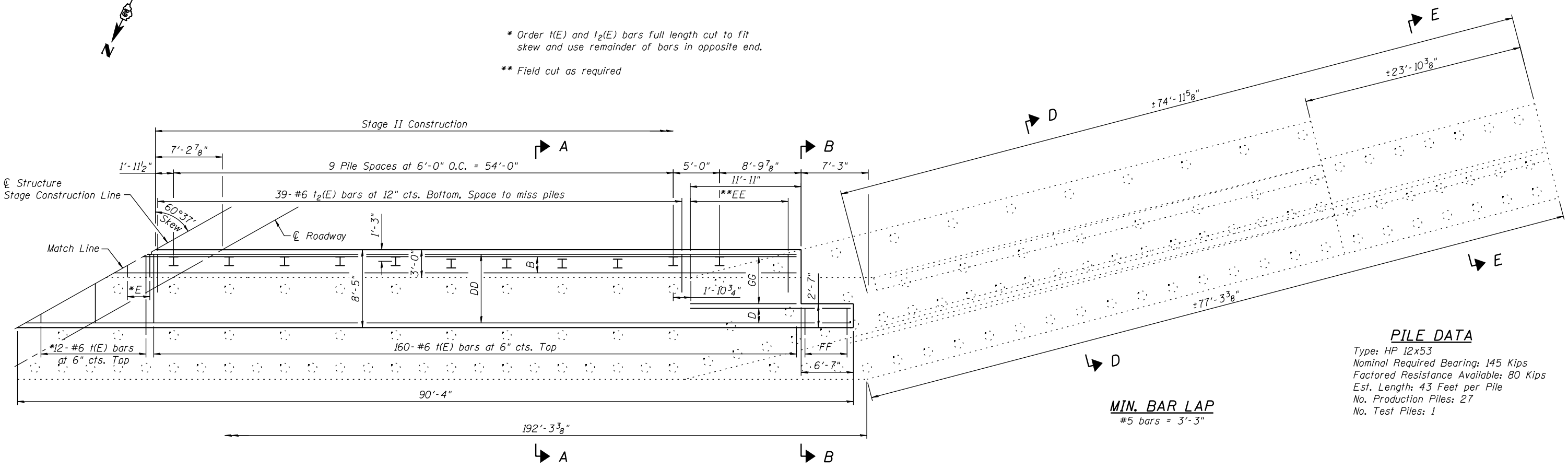
Notes:
 See Sheet 28 of 35 for South Abutment details and Bill of Material.
 Bar indicated thus 3x6-#5 etc. indicates 3 lines of bars 6 lengths per line. For details of Bar Splices, See Sheet 32 of 35.
 For details of piles and concrete encasement See Sheet 30 of 35.

Designation	Note
A	2x2-#5 w ₅ (E) bars at 12" cts. Bottom
AA	2-#5 w ₆ (E) bars at 12" cts. Bottom
B	3x2 w ₇ (E) bars at 12" cts. Bottom
BB	4-#5 w(E) at 12" cts. Top
C	10x2-#5 w ₁ (E) bars at 12" cts. Top
CC	10-#5 w ₂ (E) Bars at 12" cts. Top. Cut in field to fit skew
D	4-#5 w ₃ (E) bars at 12" cts. Top
DD	10x2-#5 w ₄ (E) bars at 12" cts. Top
E	3-#6 t ₂ (E) bars at 12" cts. Bottom
EE	10-#6 t ₂ (E) bars at 12" cts. Bottom. Space to miss piles.
F	10 Bar Splicers (E) for w ₂ (E) bars
FF	16-#6 t ₁ (E) bars at 6" cts. Top
G	2 Bar Splicers (E) for w ₆ (E) bars
GG	6-#5 w ₁₁ (E) bars at 12" cts. Top



SOUTH ABUTMENT FOOTING PLAN

* Order t(E) and t₂(E) bars full length cut to fit skew and use remainder of bars in opposite end.
 ** Field cut as required



SOUTH ABUTMENT FOOTING PLAN

MIN. BAR LAP
 #5 bars = 3'-3"

PILE DATA
 Type: HP 12x53
 Nominal Required Bearing: 145 Kips
 Factored Resistance Available: 80 Kips
 Est. Length: 43 Feet per Pile
 No. Production Piles: 27
 No. Test Piles: 1

FILE NAME = s:\p1\6380--6395\6346\025\Microsht\Structural\Plans\0980015-64C17-827-SABUT4.dgn

SA STRAND ASSOCIATES
 1170 SOUTH HOUBOLT ROAD
 JOLIET, ILLINOIS 60431
 (815) 744-4200
 IDFPR NO. 184-001273

USER NAME = brianf
 PLOT SCALE =
 PLOT DATE = 10/12/2012

DESIGNED - KJL
 CHECKED - AJS
 DRAWN - BJF
 CHECKED - KJL

REVISED
 REVISED
 REVISED
 REVISED

**STATE OF ILLINOIS
 DEPARTMENT OF TRANSPORTATION**

**SOUTH ABUTMENT FOOTING PLAN
 STRUCTURE NO. 098-0015**

SHEET NO. 29 OF 35 SHEETS

F.A.P. RTE.	SECTION	COUNTY	TOTAL SHEETS	SHEET NO.
646	101 BR-3	WHITESIDE	113	85
ILLINOIS FED. AID PROJECT			CONTRACT NO. 64C17	