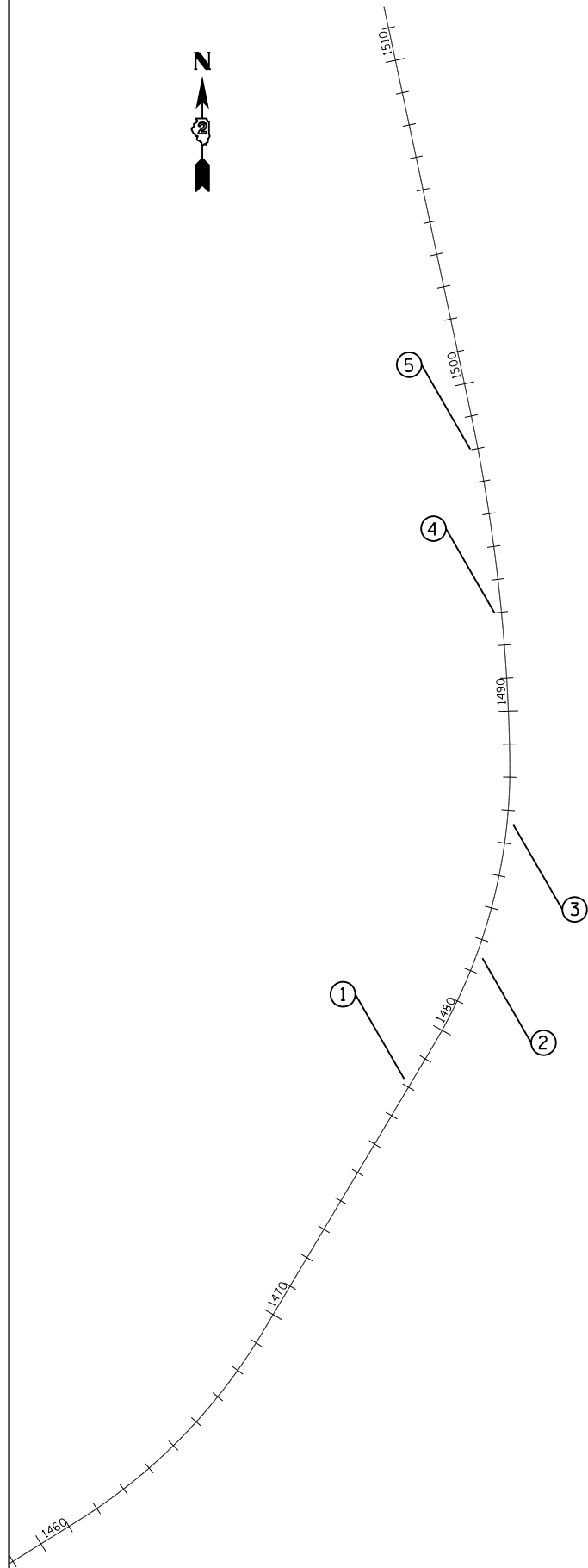


# HORIZONTAL & VERTICAL CONTROL



Chain IL84 contains:  
CUR 280 CUR 290 CUR 300 1003

Beginning chain IL84 description

Point 50 N 2,103,641.3100 E 2,219,022.8080 Sta 1339+23.0300

Course from PT 270 to PC 280 58° 05' 27.0760" Dist 290.0734'

Curve Data  
-----

**Curve 280**  
P.I. Station 1465+41.8276 N 2,114,676.6747 E 2,221,991.1855  
Delta = 27° 18' 07.5341" (LT)  
Degree = 3° 21' 59.9802"  
Tangent = 413.3280'  
Length = 810.9546'  
Radius = 1,701.8576'  
External = 49.4731'  
Long Chord = 803.3039'  
Mid. Ord. = 48.0756'  
P.C. Station 1461+28.4996 N 2,114,458.2004 E 2,221,640.3166  
P.T. Station 1469+39.4542 N 2,115,031.7484 E 2,222,202.7575  
C.C. N 2,115,902.8857 E 2,220,740.7592

Course from PT 280 to PC 290 30° 47' 19.5421" Dist 1,009.0844'

Curve Data  
-----

**Curve 290**  
P.I. Station 1484+13.4427 N 2,116,297.9934 E 2,222,957.2545  
Delta = 31° 42' 11.9557" (LT)  
Degree = 3° 29' 57.8622"  
Tangent = 464.9041'  
Length = 905.9629'  
Radius = 1,637.3001'  
External = 64.7244'  
Long Chord = 894.4495'  
Mid. Ord. = 62.2631'  
P.C. Station 1479+48.5386 N 2,115,898.6128 E 2,222,719.2820  
P.T. Station 1488+54.5015 N 2,116,762.8383 E 2,222,949.8339  
C.C. N 2,116,736.7047 E 2,221,312.7424

Curve Data  
-----

**Curve 300**  
P.I. Station 1493+87.2730 N 2,117,295.5420 E 2,222,941.3302  
Delta = 11° 08' 35.5736" (LT)  
Degree = 1° 02' 56.7126"  
Tangent = 532.7716'  
Length = 1,062.1823'  
Radius = 5,461.4907'  
External = 25.9246'  
Long Chord = 1,060.5091'  
Mid. Ord. = 25.8021'  
P.C. Station 1488+54.5015 N 2,116,762.8383 E 2,222,949.8339  
P.T. Station 1499+16.6838 N 2,117,816.5593 E 2,222,830.0353  
C.C. N 2,116,675.6653 E 2,217,489.0390

Course from PT 300 to 1003 347° 56' 32.0127" Dist 1,249.1523'

Point 1003 N 2,119,038.1521 E 2,222,569.0900 Sta 1511+65.8361

Ending chain IL84 description

CURVE POINT NUMBERS					
CHAIN	CURVE	PI	CC	PC	PT
IL84	280	280	281	282	283
IL84	290	290	291	292	293
IL84	300	300	301	302	303

BENCH MARKS							
POINT	NORTH	EAST	ELEVATION	CHAIN	STATION	OFFSET	DESCRIPTION
400	2113186.7705	2220659.3903	895.1180	IL84	1444+69.2912	27.3919' RT	HEADWALL, CHISELED SQUARE
401	2114551.8352	2221735.1287	884.0599	IL84	1462+60.4946	24.3272' LT	HEADWALL, CHISELED SQUARE
402	2116170.6296	2222879.3120	884.8335	IL84	1482+60.6371	28.4074' RT	HEADWALL, CHISELED SQUARE
403	2111863.7970	2219267.8670	884.0550	IL84	1425+41.6665	39.8841' LT	R.O.W. MARKER, TOP
404	2113996.5310	2221094.3670	897.3490	IL84	1454+02.5538	39.4469' RT	R.O.W. MARKER, TOP
405	2117880.2393	2222771.6696	899.8721	IL84	1499+91.1514	43.7754' LT	POWER POLE, RAIL ROAD SPIKE

FILE NAME =	USER NAME = rundbladerr	DESIGNED -	REVISED -	<b>STATE OF ILLINOIS DEPARTMENT OF TRANSPORTATION</b>	<b>HORIZONTAL &amp; VERTICAL CONTROL</b>	F.A.P. RTE.	SECTION	COUNTY	TOTAL SHEETS	SHEET NO.	
et:\pw\work\p\dot\rundbladerr\d0233029	D201410-sh-t-HVC.dgn	DRAWN -	REVISED -			570	101T	JODAVIESS	64	19	
	PLOT SCALE = 500.0000' / in.	CHECKED -	REVISED -			CONTRACT NO. 64F75					
	PLOT DATE = Tue Jan 22 11:21:33 2013	DATE -	REVISED -			SCALE: _____ SHEET _____ OF _____ SHEETS STA. _____ TO STA. _____	ILLINOIS FED. AID PROJECT				