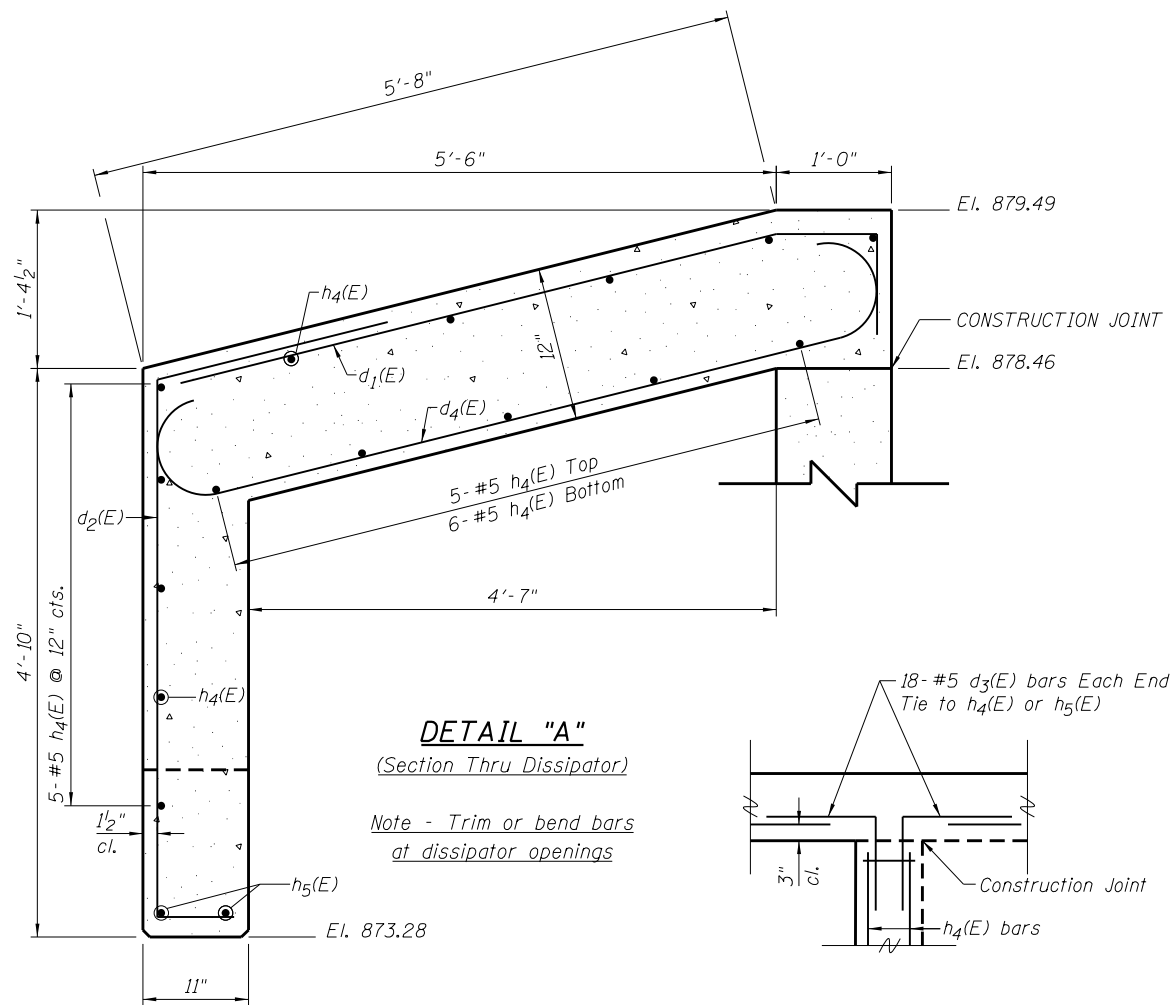
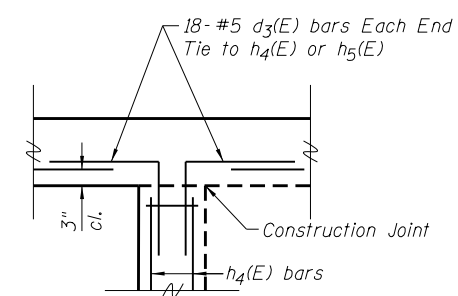


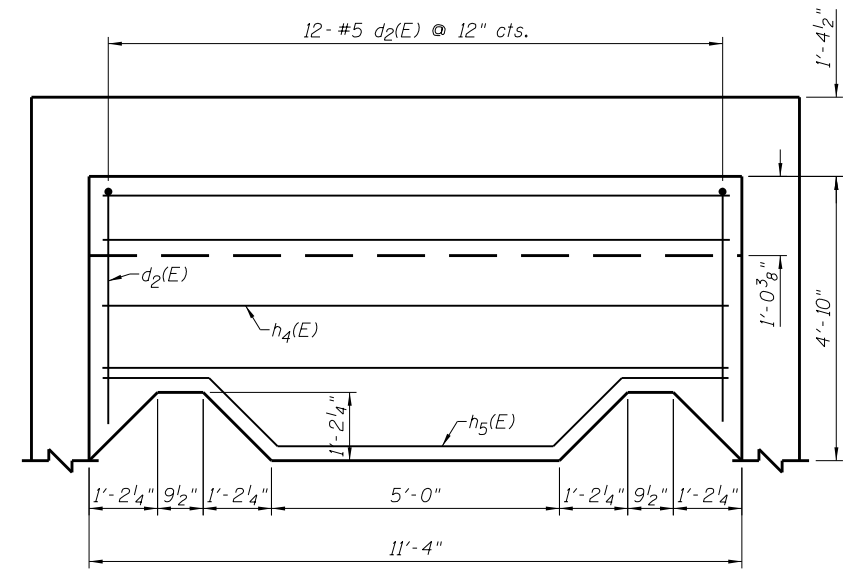
**END SECTION DETAILS  
IL RTE 84  
F.A.P. RTE 570 SECTION 101T  
JO DAVIESS COUNTY  
STA. 1484 + 99  
STR. NO. 043-1101**



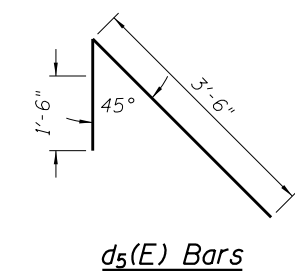
**DETAIL "A"**  
(Section Thru Dissipator)  
Note - Trim or bend bars at dissipator openings



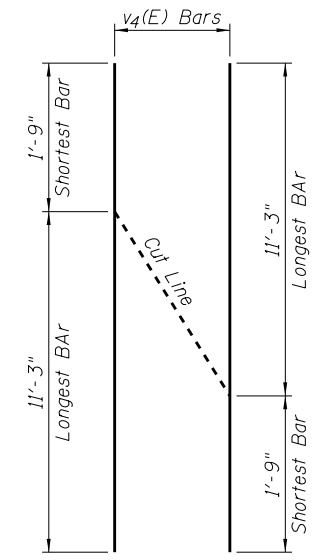
**DETAIL "B"**  
(Plan View at Ends)



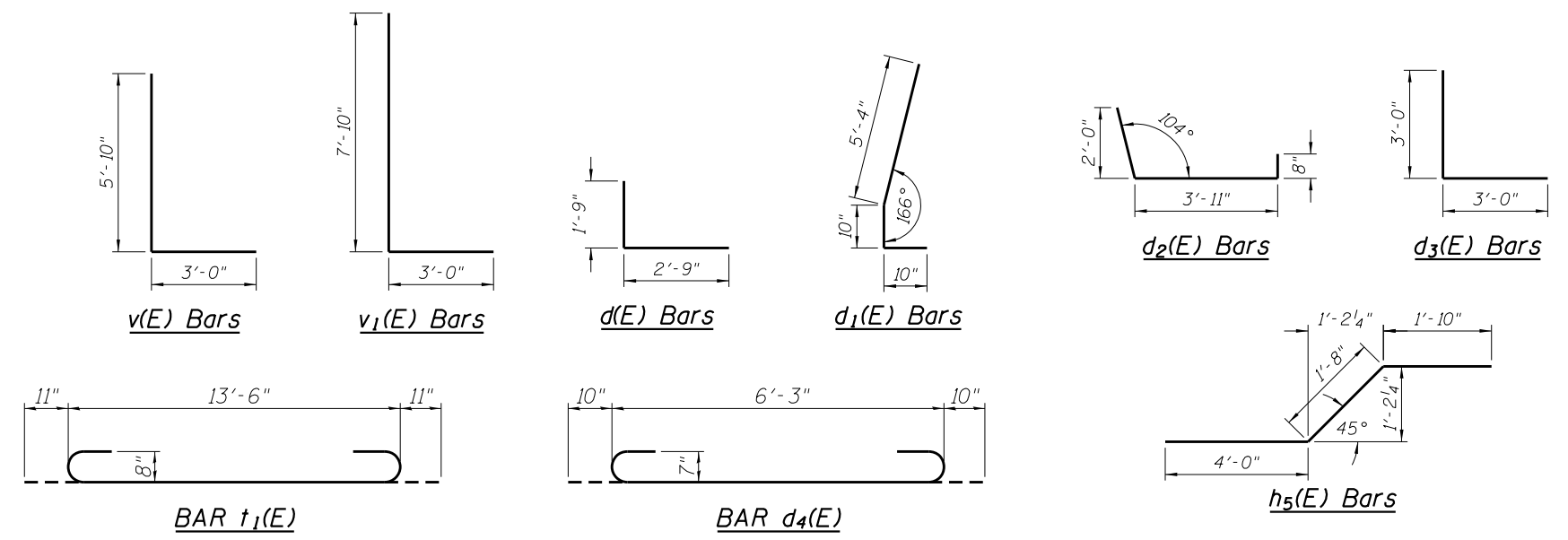
**ELEVATION VIEW OF DISSIPATOR**  
Note - Trim or bend bars at dissipator openings



**d5(E) Bars**



**Bar v4(E)  
Cut Diagram**



**GENERAL NOTES**

This work shall be done in accordance to the applicable portions of sections 503, 508, and 540 of the Standard Specifications.

Exposed edges shall be beveled 3/4".

Reinforcement bars shall conform to the requirements of ASTM A 706 Gr. 60 (IL Modified).

Steel plates shall conform to AASHTO M-270 Grade 36 and shall be galvanized conforming to AASHTO M-111.

Bolts, Nuts, and Washers shall be in accordance with article 505 of the Standard Specifications and shall be galvanized.

See Plan and Profile Sheet for more information.

See Cross Section Sheet for more information.

Backfill and Compaction shall be in accordance with Section 207 for Porous Granular Embankment. Excavation for the culvert and end sections shall be considered included in the unit price bid for Precast Concrete Box Culverts.

A deposit of gravel or broken stone shall be placed behind drain holes, in accordance with article 503.12 of the standard specifications. A double layer of geotechnical filter fabric shall be placed against the drain hole and around the deposit to prevent leakage of backfill material through the 3" diameter opening. Filter fabric shall be in accordance with section 282 of the standard specifications, with the exception that under method of measurement and basis of payment this item will be considered incidental to the concrete box culvert.

A mechanical tamper shall be used for backfill on the sides of the culvert and end sections.



USER NAME = dssdd	DESIGNED - SB	REVISED - -
WES JOB # = 2120015	DRAWN - BEH	REVISED - -
PLOT SCALE = 10.0000 "/in.	CHECKED - DB	REVISED - -
PLOT DATE = Tue Jan 22 11:01:51 2013	DATE - 1/08/2013	REVISED - -

**STATE OF ILLINOIS  
DEPARTMENT OF TRANSPORTATION**

**STA. 1484 + 99 LT. DOWNSTREAM END SECTION DETAILS  
STRUCTURE NO. 043-1101**

SHEET 4 OF 8 SHEETS STA. 1484+99

F.A.P. RTE. 570	SECTION 101T	COUNTY JO DAVIESS	TOTAL SHEETS 64	SHEET NO. 33
CONTRACT NO. 64F75			ILLINOIS FED. AID PROJECT	