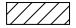
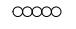
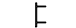
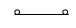

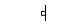






LEGEND

-  WORK ZONE
-  IMPACT ATTENUATORS, TEMPORARY
-  TYPE III BARRICADE
-  DRUMS
-  TEMPORARY CONCRETE BARRIER
-  SIGN
-  DETECTOR LOOPS
-  TRAFFIC SIGNAL
-  TEMPORARY RUMBLE STRIPS
-  DOUBLE VERTICAL PANELS

STAGE 2 CONSTRUCTION:

1. REMOVE CONFLICTING EXISTING PAVEMENT MARKINGS UNDER HIGHWAY STANDARD 701201. GRINDING OF EXISTING PAVEMENT IS NOT ALLOWED.
2. CLOSE SOUTH HALF OF IL 116 IN ACCORDANCE WITH HIGHWAY STANDARD 701321-11/701201 AND AS SHOWN IN THE PLANS.
3. PERFORM SOUTH HALF STRUCTURAL AND SHOULDER RECONSTRUCTION AS SHOWN IN THE PLANS.

STAGE 3 CONSTRUCTION:

1. RESURFACE 1 1/2" OF MAINLINE PAVEMENT AS SHOWN IN THE PLANS, UNDER HIGHWAY STANDARD 701306.
2. PLACE PROPOSED PAVEMENT MARKINGS AS SHOWN IN THE PLANS AND UNDER HIGHWAY STANDARD 780001-03.

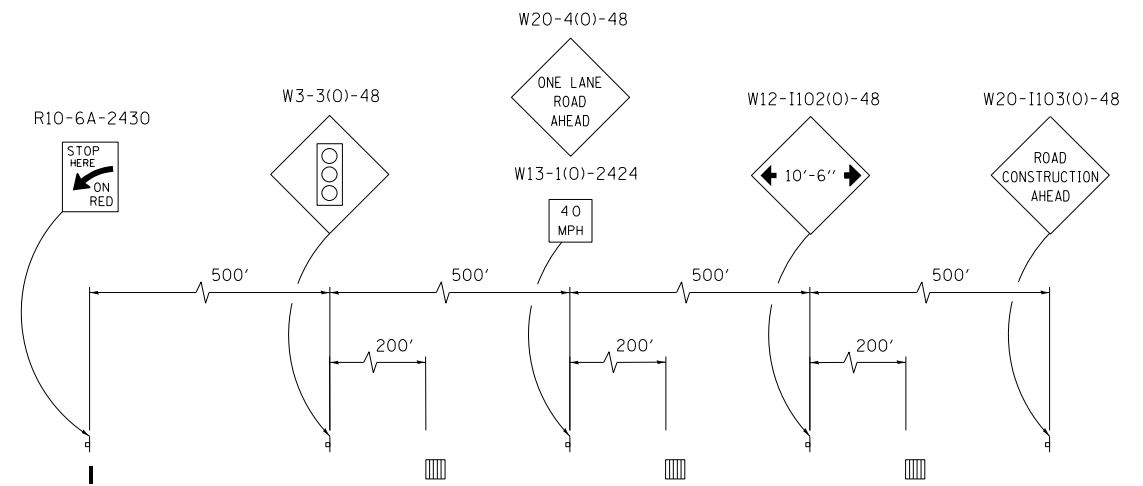
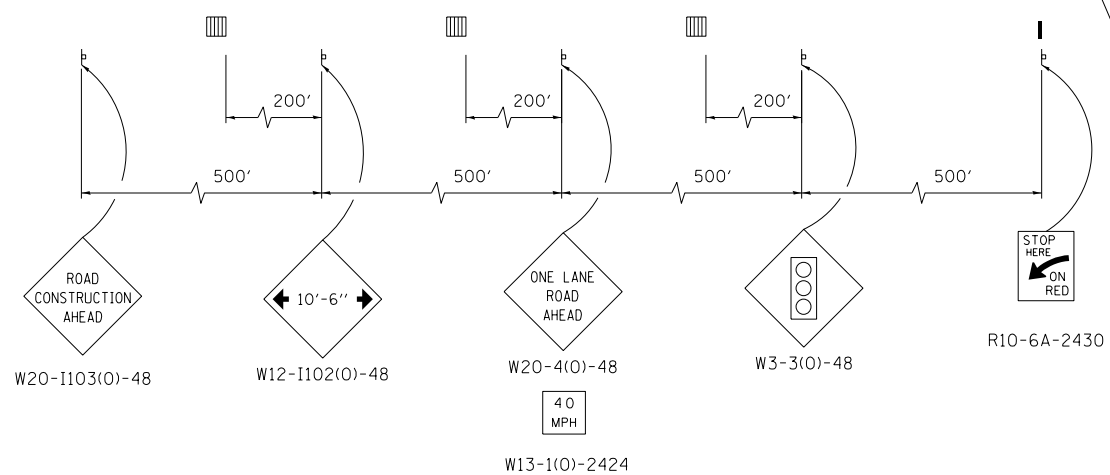
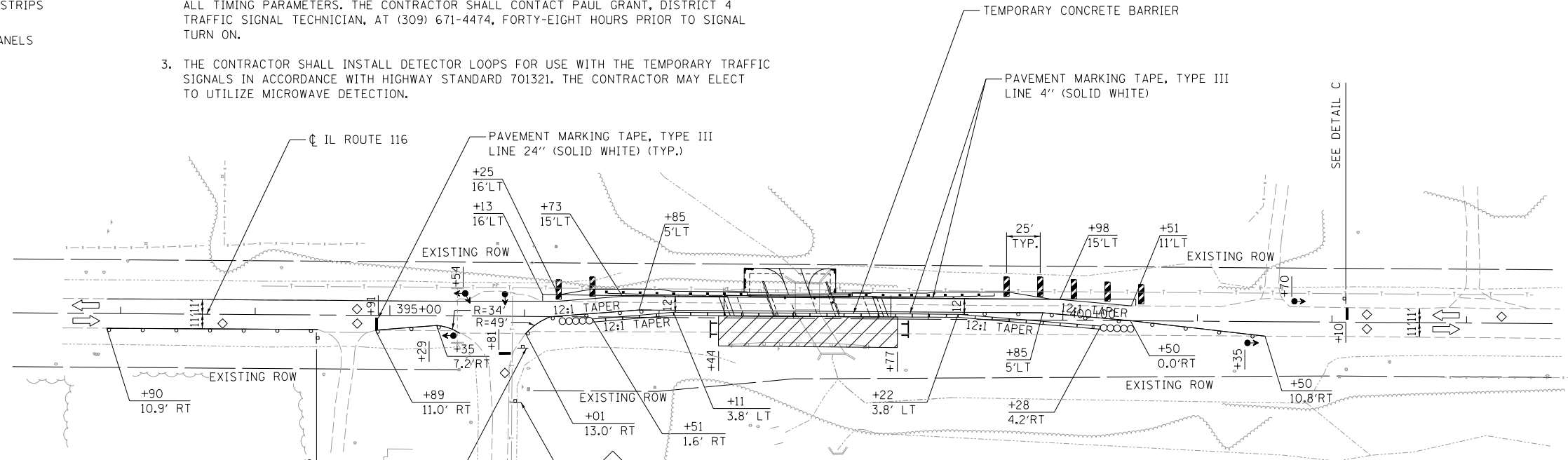
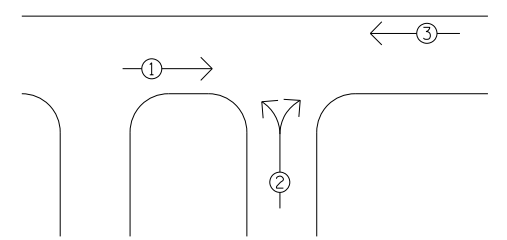
NOTES:

1. TRAFFIC CONTROL SHALL BE IN ACCORDANCE WITH STANDARD 701321 EXCEPT WHERE MODIFIED ON THIS PLAN SHEET.
2. THREE PHASE SIGNAL OPERATION IS REQUIRED FOR STAGE 2. THE ENGINEER OF TRAFFIC SHALL APPROVE ALL TIMING PARAMETERS. THE CONTRACTOR SHALL CONTACT PAUL GRANT, DISTRICT 4 TRAFFIC SIGNAL TECHNICIAN, AT (309) 671-4474, FORTY-EIGHT HOURS PRIOR TO SIGNAL TURN ON.
3. THE CONTRACTOR SHALL INSTALL DETECTOR LOOPS FOR USE WITH THE TEMPORARY TRAFFIC SIGNALS IN ACCORDANCE WITH HIGHWAY STANDARD 701321. THE CONTRACTOR MAY ELECT TO UTILIZE MICROWAVE DETECTION.

NOTES CONT.:

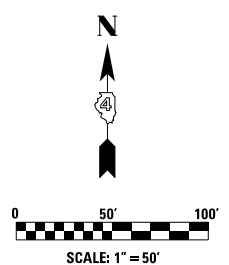
4. THE ADVANCE DETECTOR LOOPS FOR BOTH MAINLINE APPROACHES SHALL BE LOCATED 100FT. FROM THE STOP BAR.
5. THE TEMPORARY TRAFFIC SIGNAL HEADS SHALL BE PLACED AT THE LOCATIONS INDICATED ON THE PLAN SHEETS OR AS DIRECTED BY THE ENGINEER.
6. THE TEMPORARY TRAFFIC SIGNAL INSTALLATION SHALL CONFORM TO ALL MUTCD REQUIREMENTS.
7. ALL LABOR, EQUIPMENT, AND MATERIALS REQUIRED TO COMPLY WITH THESE REQUIREMENTS AND PLAN SHEET DETAILS SHALL BE INCLUDED IN THE CONTRACT BID PRICE FOR THE TEMPORARY BRIDGE SIGNAL INSTALLATION. THERE WILL BE NO ADDITIONAL COMPENSATION.

TRAFFIC SIGNAL SEQUENCE



DETAIL B

DETAIL C



USER NAME = *USER*	DESIGNED - RWK	REVISED -
PLOT SCALE = *SCALE*	DRAWN - RWK	REVISED -
PLOT DATE = *DATE*	CHECKED - ST	REVISED -
	DATE - 11/2012	REVISED -

**STATE OF ILLINOIS
DEPARTMENT OF TRANSPORTATION**

**MAINTENANCE OF TRAFFIC - STAGE 2
IL ROUTE 116**

SCALE: 1"=50' SHEET NO. 1 OF 1 SHEETS STA. 392+19.74 TO STA. 403+63.74

F.A.P. RTE.	SECTION	COUNTY	TOTAL SHEETS	SHEET NO.
665	(144-B-1)BR	FULTON	48	16
CONTRACT NO. 68778			ILLINOIS FED. AID PROJECT	