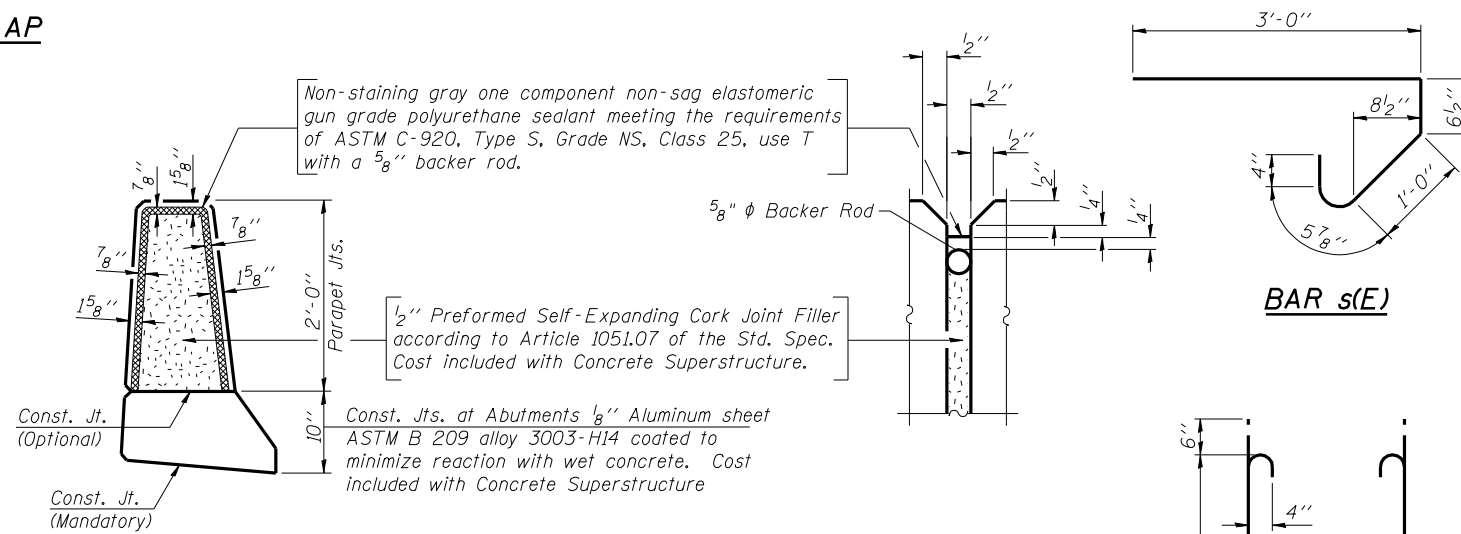


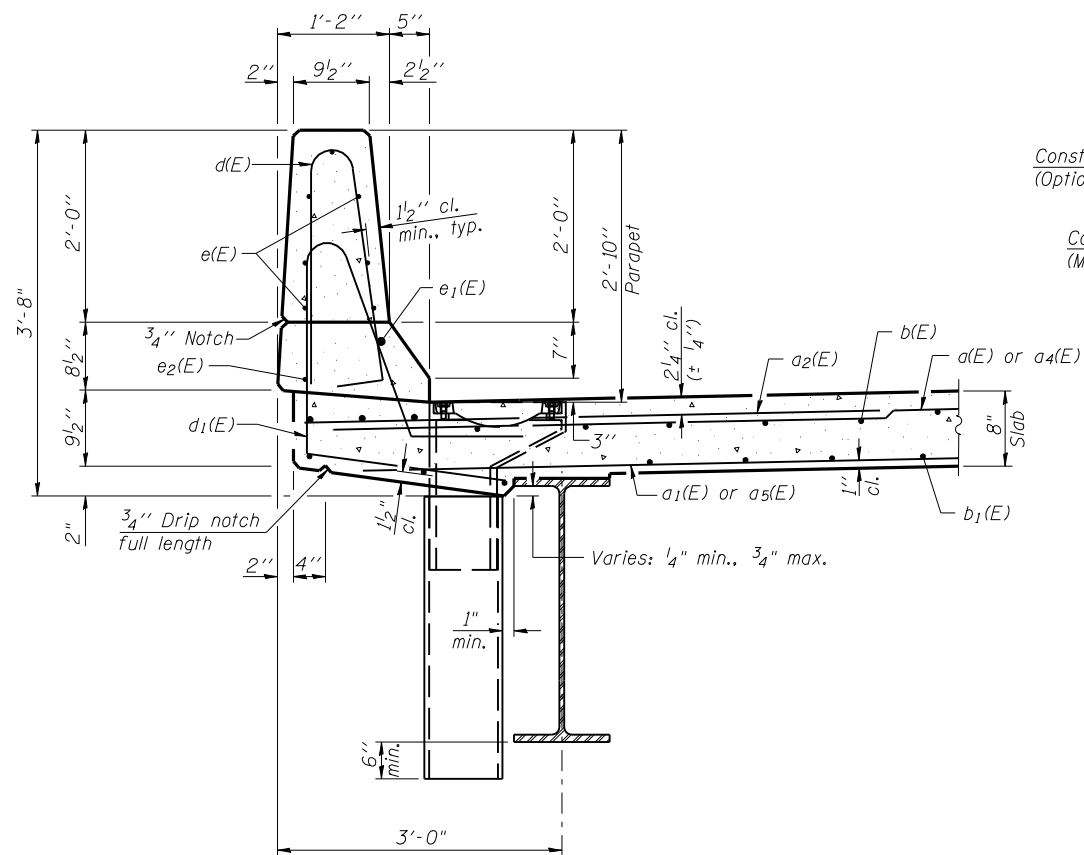
**INSIDE ELEVATION OF PARAPET**

**MINIMUM BAR LAP**

(Parapet)  
 #4 bar = 2'-0"  
 #8 bar = 5'-2"



**PARAPET JOINT DETAILS**

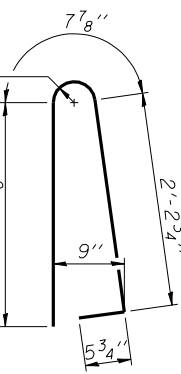


**SECTION THRU PARAPET**

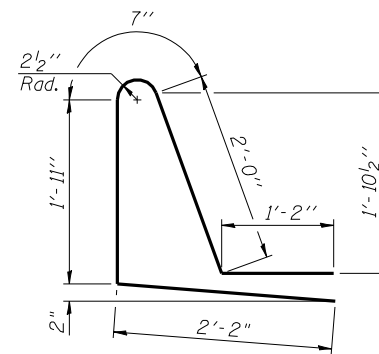
**PARAPET JOINT DETAILS**

**BAR s(E)**

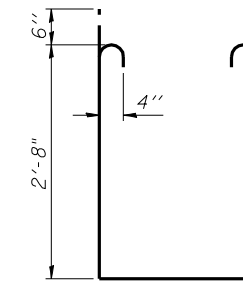
**BAR s1(E)**



**BAR d(E)**



**BAR d1(E)**



**BAR v(E)**

**SUPERSTRUCTURE BILL OF MATERIAL**

Bar	No.	Size	Length	Shape
a(E)	82	#5	15'-9"	—
a1(E)	57	#5	15'-5"	—
a2(E)	158	#6	6'-6"	—
a3(E)	4	#5	16'-5"	—
a4(E)	82	#5	18'-7"	—
a5(E)	57	#5	18'-3"	—
a6(E)	4	#5	19'-5"	—
a7(E)	32	#5	1'-6"	—
b(E)	117	#5	17'-8"	—
b1(E)	62	#5	25'-2"	—
d(E)	106	#5	5'-7"	↶
d1(E)	106	#5	7'-10"	↶
e(E)	42	#4	15'-9"	—
e1(E)	4	#8	26'-6"	—
e2(E)	4	#4	24'-11"	—
m(E)	10	#6	16'-11"	—
m1(E)	10	#6	19'-11"	—
m2(E)	8	#6	5'-0"	—
m3(E)	4	#6	2'-6"	—
m4(E)	2	#6	11"	—
m5(E)	2	#6	3'-11"	—
m6(E)	12	#6	7'-9"	—
m7(E)	12	#6	8'-10"	—
s(E)	74	#5	5'-5"	↷
s1(E)	62	#4	8'-6"	↷
v(E)	72	#5	3'-9"	└
Reinforcement Bars, Epoxy Coated		Pound	14740	
Concrete Superstructure		Cu. Yd.	74.0	

Bars indicated thus 1x2-#4 etc. indicates 1 line of bars with 2 lengths per line.